



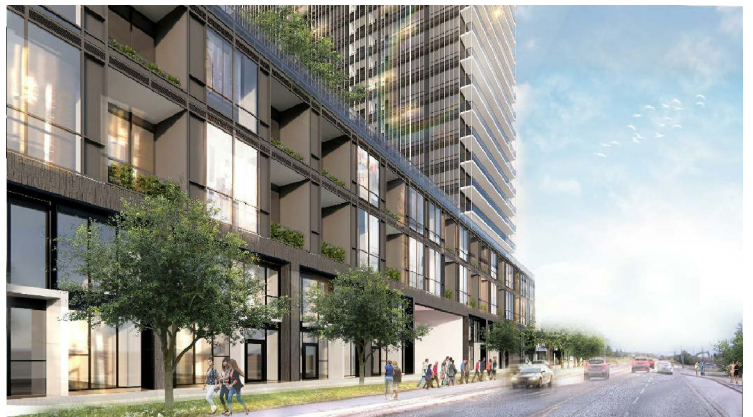
PEDESTRIAN VIEW LOOKING NORTH



PEDESTRIAN VIEW LOOKING NORTH EAST FROM EDGELEY BLVD



PEDESTRIAN VIEW LOOKING SOUTH EAST FROM COMMERCE ST



PEDESTRIAN STREET VIEW LOOKING WEST ALONG STREET A



PEDESTRIAN VIEW LOOKING NORTH WITHIN THE PEDESTRIAN MEWS TOWARDS BRIDGE



PEDESTRIAN VIEW LOOKING NORTH INTO THE PEDESTRIAN MEWS



VIEW FROM THE HIGHWAY 400 ON RAMP



PEDESTRIAN VIEW LOOKING NORTH-WEST FROM THE P.O.P.S

Perspective Renderings

LOCATION: Part of Lot 5, Concession 5;
Parts 16, 18, 37-41, 66-68 on Plan 65R-20291

APPLICANT:
RP B3S Holdings Inc.



Attachment

FILES: OP.21.016,
Z.21.027, DA.21.031

DATE:
November 2, 2021

5