

VAUGHAN METROPOLITAN CENTRE SUB-COMMITTEE – NOVEMBER 2, 2021**COMMUNICATIONS****Distributed November 1, 2021****Item**

- | | | |
|-----|---|---|
| C1. | Presentation material titled “ <i>VMC Transportation Master Plan Update</i> ” | 2 |
| C2. | Presentation material titled “ <i>VMC Parks and Wayfinding Master Plan Update</i> ” | 3 |

Disclaimer Respecting External Communications

Communications are posted on the City’s website pursuant to Procedure By-law Number 7-2011. The City of Vaughan is not responsible for the validity or accuracy of any facts and/or opinions contained in external Communications listed on printed agendas and/or agendas posted on the City’s website.

Please note there may be further Communications.

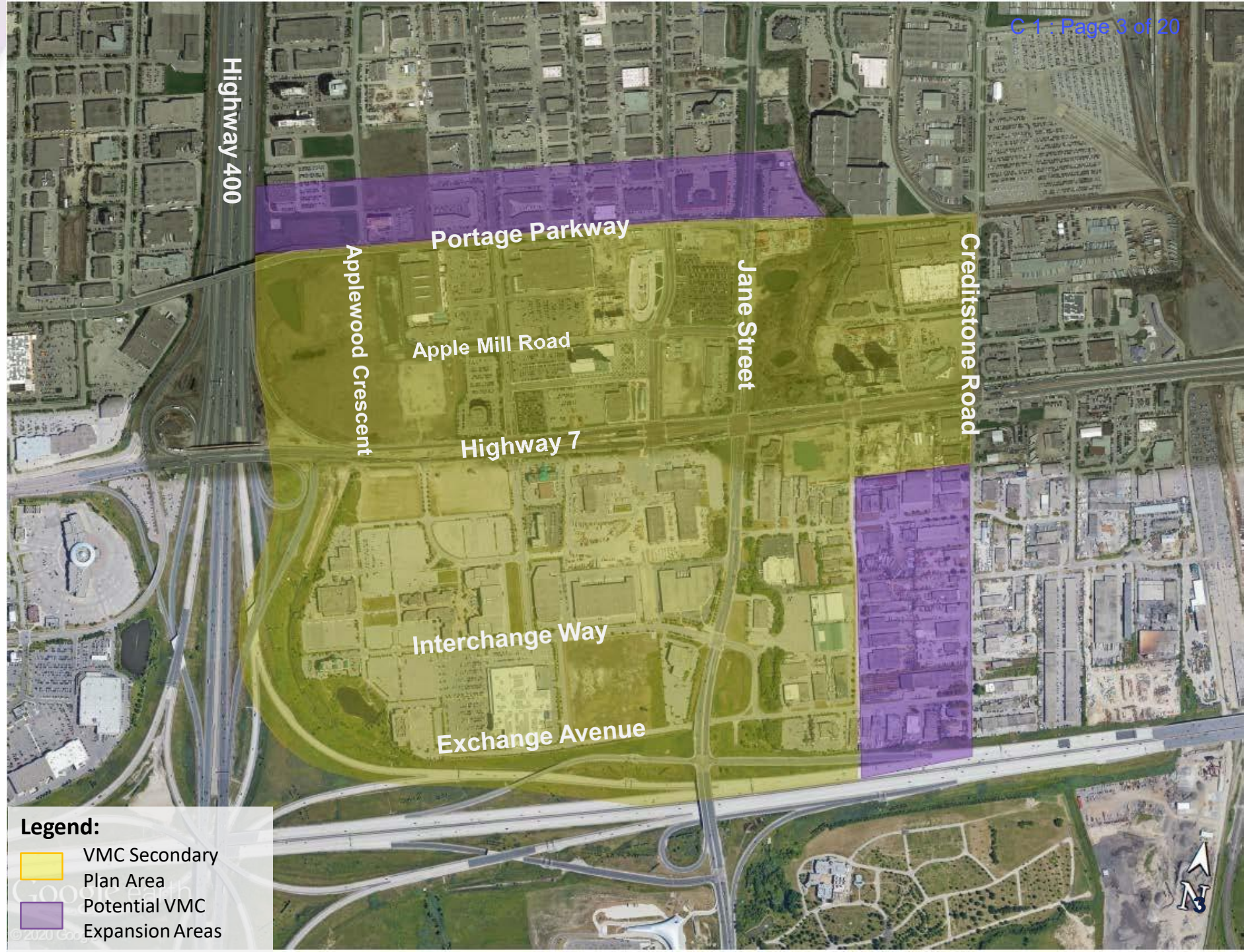
**Communication : C 1
VMC Sub-Committee
November 2, 2021
Agenda Item # 2**

VMC Transportation Master Plan Update

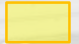
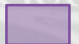
Purpose

- To provide an update on the Vaughan Metropolitan Centre Transportation Master Plan (TMP)
- To provide an update on two associated road Environmental Assessment studies – for Millway Avenue and Interchange Way

Study Area



Legend:

-  VMC Secondary Plan Area
-  Potential VMC Expansion Areas

What is a Transportation Master Plan?

- ✓ A long-term blueprint for transportation infrastructure improvement and policy to support growth and development
- ✓ A 'road map' to develop a well integrated multi-modal sustainable transportation network – an implementation plan to prioritize improvements
- ✓ A guide to making decisions on community specific transportation issues both now and in the future
- ✓ Fulfillment of Phases 1 and 2 of the Municipal Class Environmental Assessment process



Transportation Planning Context



Scope of the Transportation Master Plan



The VMC TMP Update is:

- *Reviewing evolving transportation needs*
- *Engaging all stakeholders and coordinating with ongoing associated studies (VMC SP and PWMP)*
- *Defining a multimodal plan for sustainable transportation, in accordance with the Class Environmental Assessment process*
- *Being conducted in tandem with the Secondary Plan Update*
- *Integrating the parking strategy for the VMC*

The TMP aligns with the City's commitment to improve transportation and mobility as outlined in the 2018-2022 Term of Council Service Excellence Strategic Plan.

Municipal Class EA Planning and Design Process

**VMC
Transportation
Master Plan**

**Millway Avenue
and
Interchange
Way Class EAs**

PHASE 1

Problem & Opportunity

PHASE 2

Alternative Solutions

PHASE 3

**Alternative Design Concept
for Preferred Solution**

PHASE 4

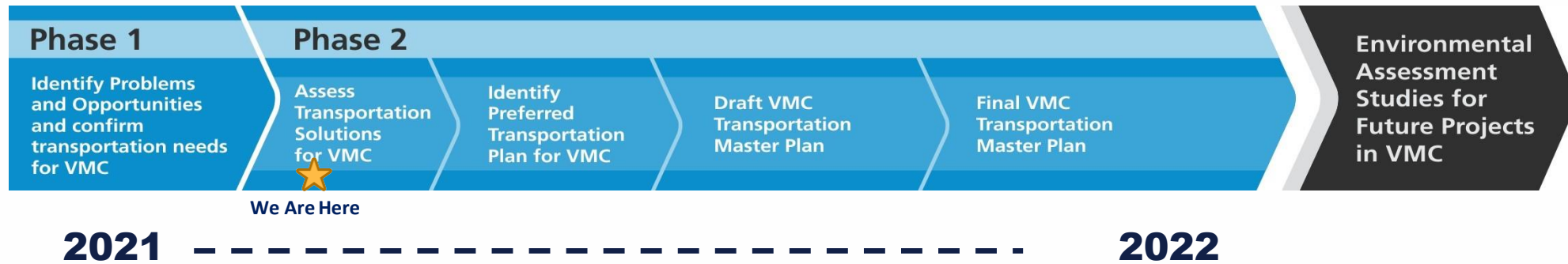
Environmental Study Report

PHASE 5

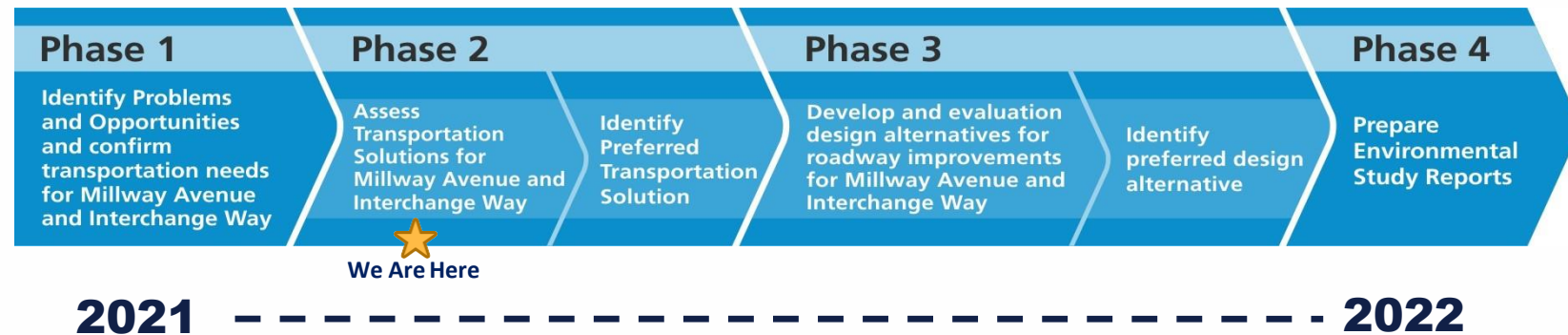
Implementation

Project Components & Timeline

Transportation Master Plan Update



Millway Avenue and Interchange Way Class EA Studies



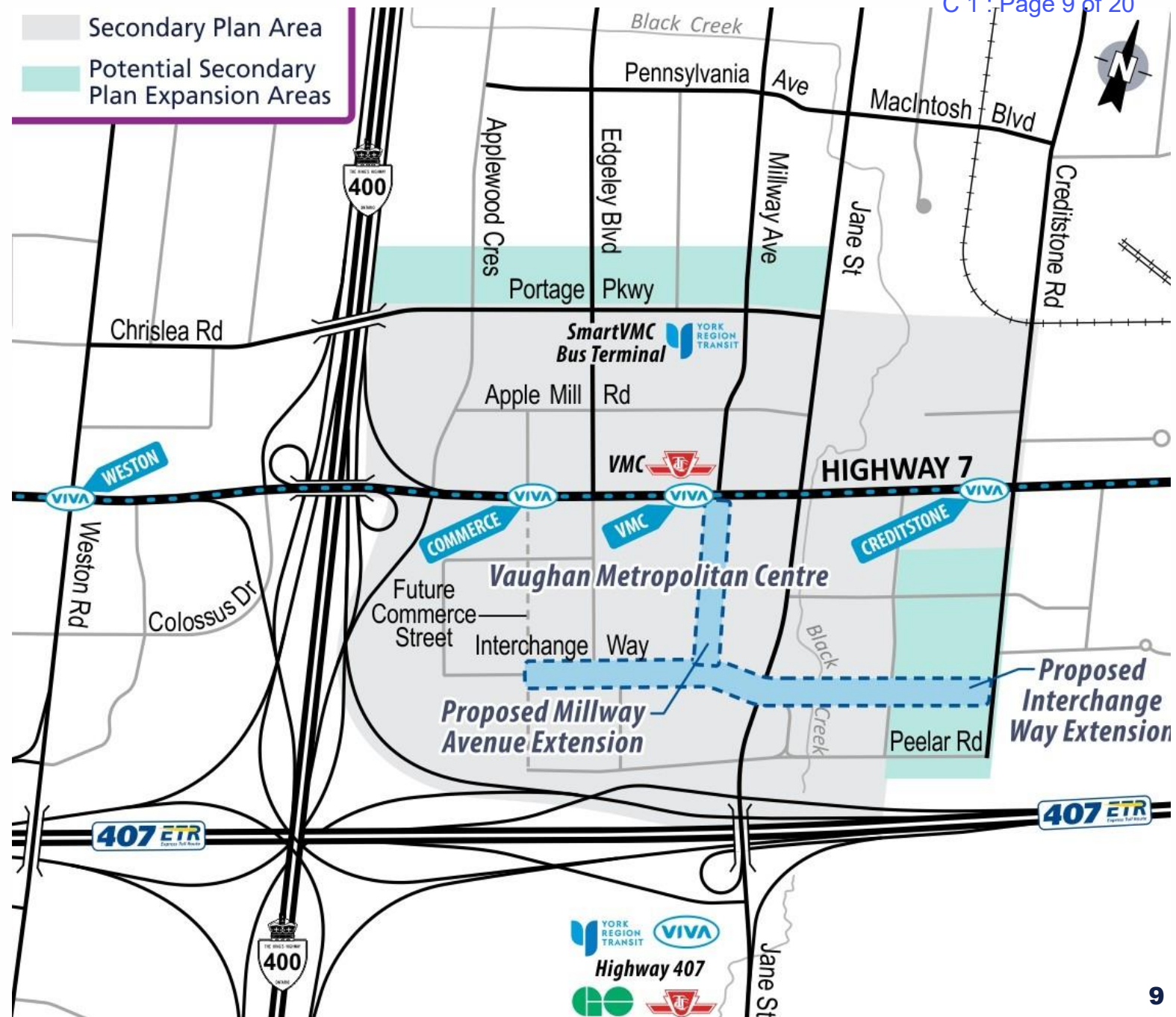
Environmental Assessment Projects

Millway Avenue

- Extension south to Interchange Way
- Menkes to construct section south of Interchange Way

Interchange Way

- Extension to Creditstone Road
- Consideration for Colossus Drive connection



EA Scope

1

Confirm need for the extension of Interchange Way and Millway Avenue based on the Preferred Transportation Option - Q1 2022

2

Develop design alternatives for each street - Q1 2022

3

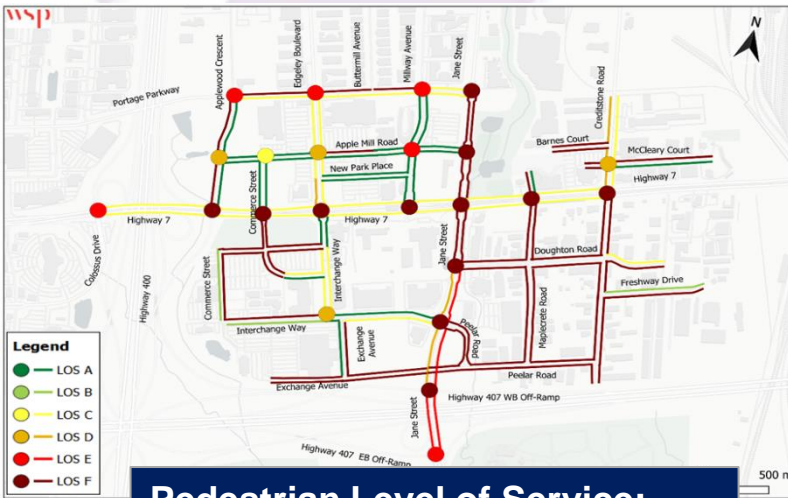
Prepare Environmental Study Reports for Interchange Way and for Millway Avenue – Q3 2022



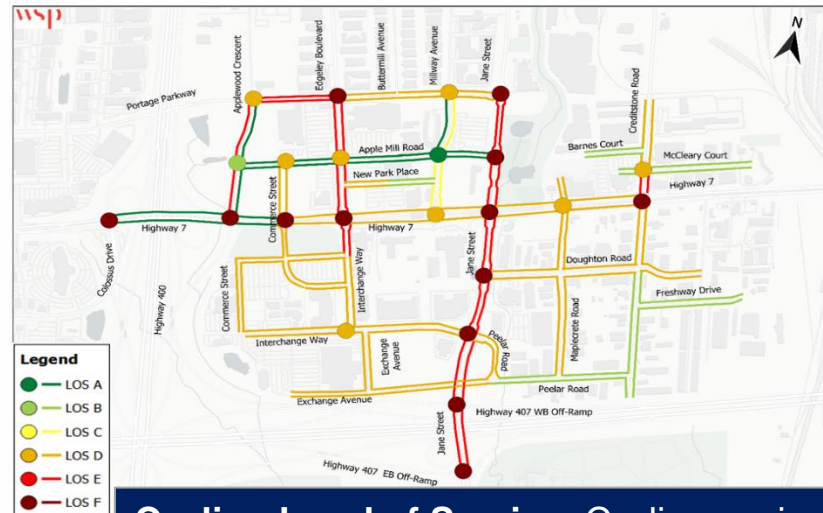
Work Completed to Date

TMP Existing Conditions Report

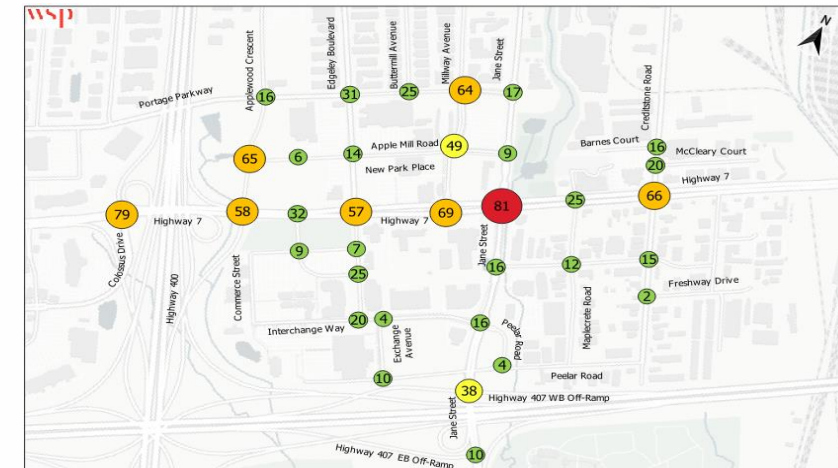
- Existing transportation conditions have been assessed for each mode
- VMC is well connected by provincial highways, Highway 7 VIVA rapid transit, TTC Subway and other transit services
- Analysis of future horizon conditions will recognize constraints and define the required networks to accommodate development



Pedestrian Level of Service:
Pedestrians face issues – e.g. narrow sidewalks, lack of sidewalks in some areas



Cycling Level of Service: Cycling environment is generally favourable, though there are issues north/south

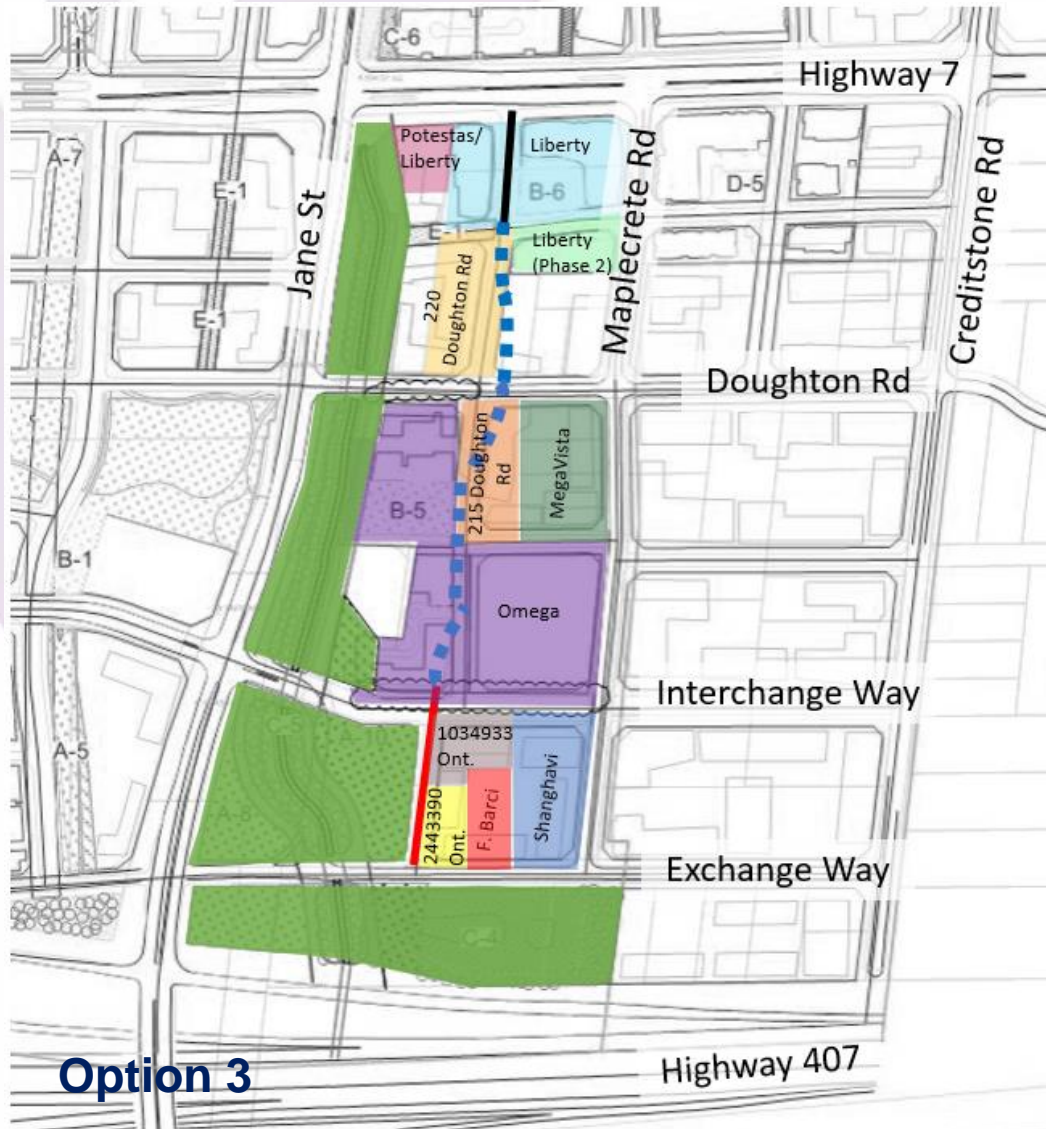


Traffic Level of Service: demand is high at peak times. Jane Street / Highway 7 is a pinch point

Additional Studies Completed

- Archaeological Assessment Stage 1
- Cultural Heritage Report
- Other supplementary studies are underway

Focused Landowners Workshop



Option 3

- Momentum is growing in the SE quadrant
- Landowner meeting held in August 2021 to review alignment options for the N/S local street east of Jane Street, in consideration of the approved Secondary Plan
- Three acceptable road alignment options were presented
- Staff continue to meet with landowners to address concerns and advance planning for the street

Consultation and Engagement to Date

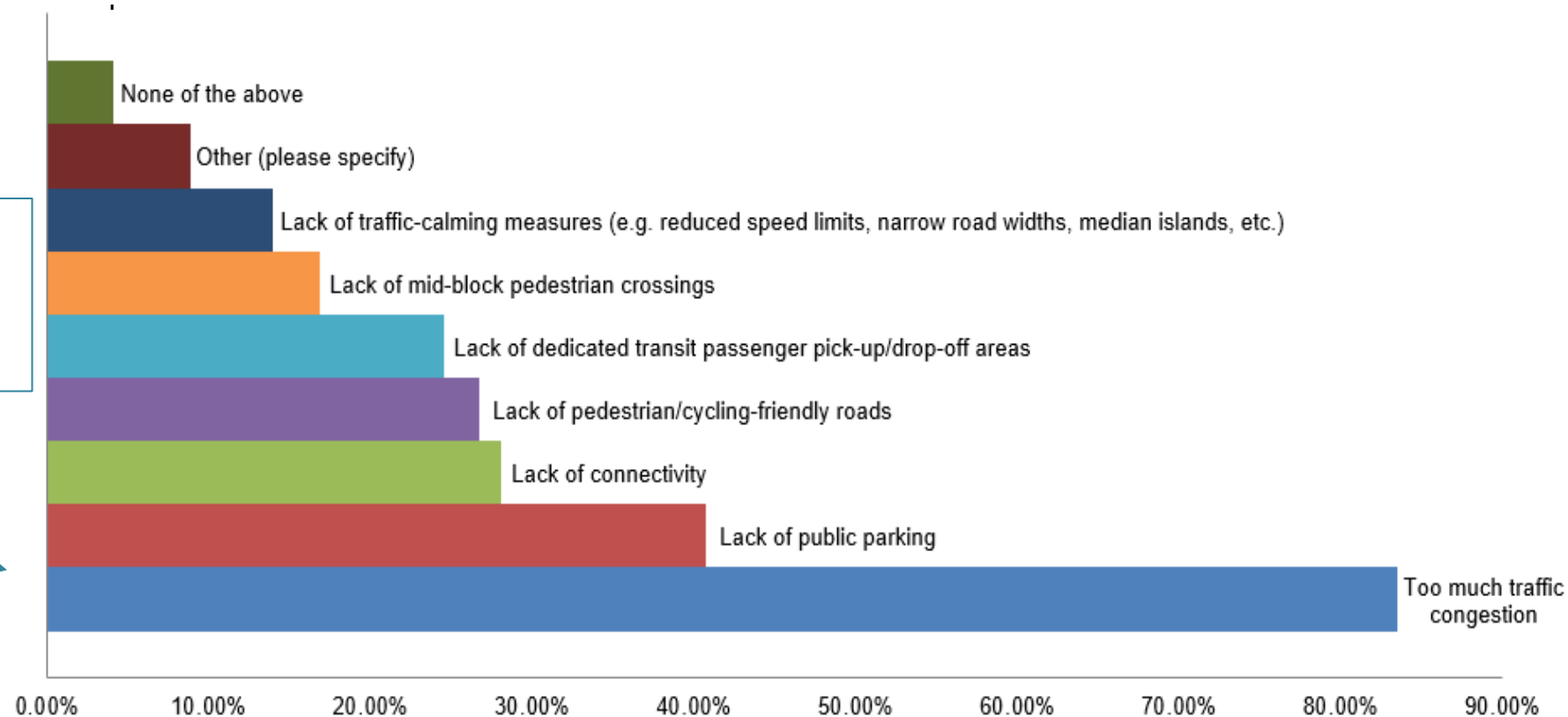
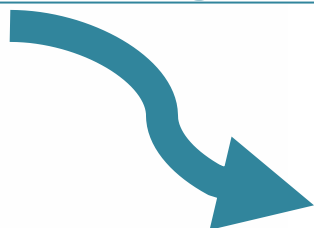


- Notice of Study Commencement issued In Fall 2020
- Online Study Survey from November 2020 to January 2021; 357 responses
- LOG meeting - Feb, 2021
- TAC #1 - Feb, 2021
- LOG Southeast Quadrant Workshop - Aug, 2021
- Next round of consultation and engagement will include:
 - *Technical Agencies Committee Workshop*
 - *Second round of Landowner Meetings*
 - *First Public Information Centre*

VMC Survey Results: Mobility Challenges

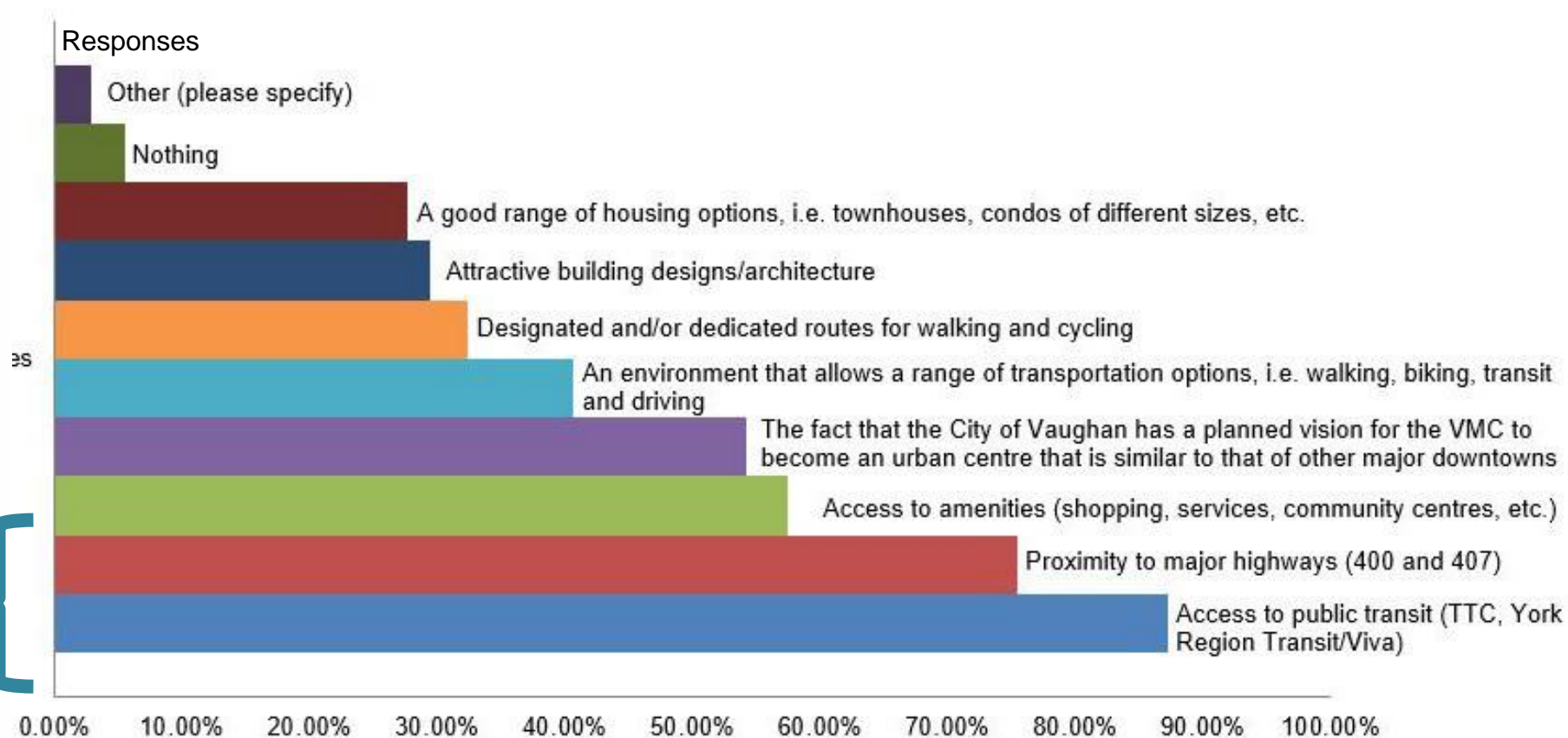
Primary Challenges:

- Congestion
- Lack of public parking



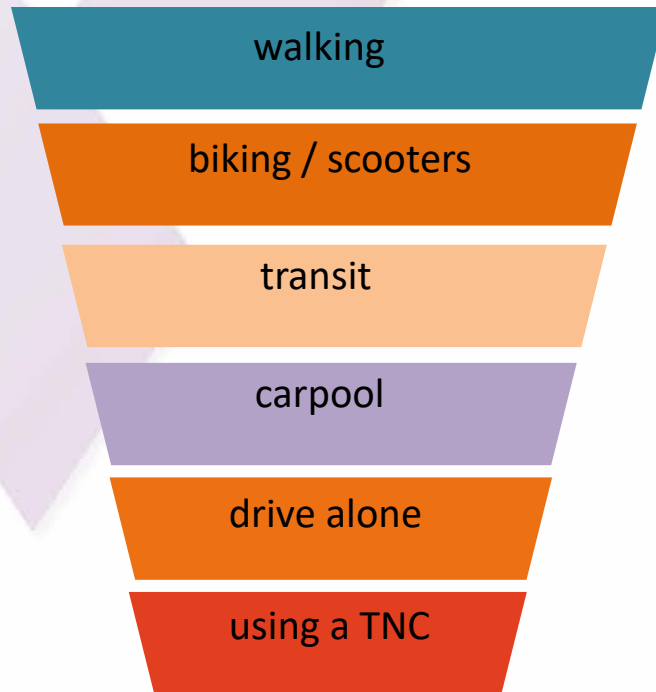
Survey Results: What makes the VMC a desirable place to live?

Access to public transport and Highways were the primary reasons given.



TMP Existing Conditions Report: Key Direction

Hierarchy of modes for travel in the VMC



- Congested traffic operations on limited arterial road network currently
- A multimodal transportation system will be needed to accommodate development:
 - *Prioritizing walking, cycling and transit, in terms of infrastructure and policies*
 - *Integration with parking strategy*



Next Steps

1

Undertake traffic analysis for future transportation conditions – Q1 2022

2

Develop transportation vision, addressing walking, cycling, transit and vehicular needs – Q2 2022

3

Develop designs and analyze impacts for the 2 EAs – Q3 2022

4

First Public Information Centre – March 2022

5

Project completion – Q4 2022

Questions?

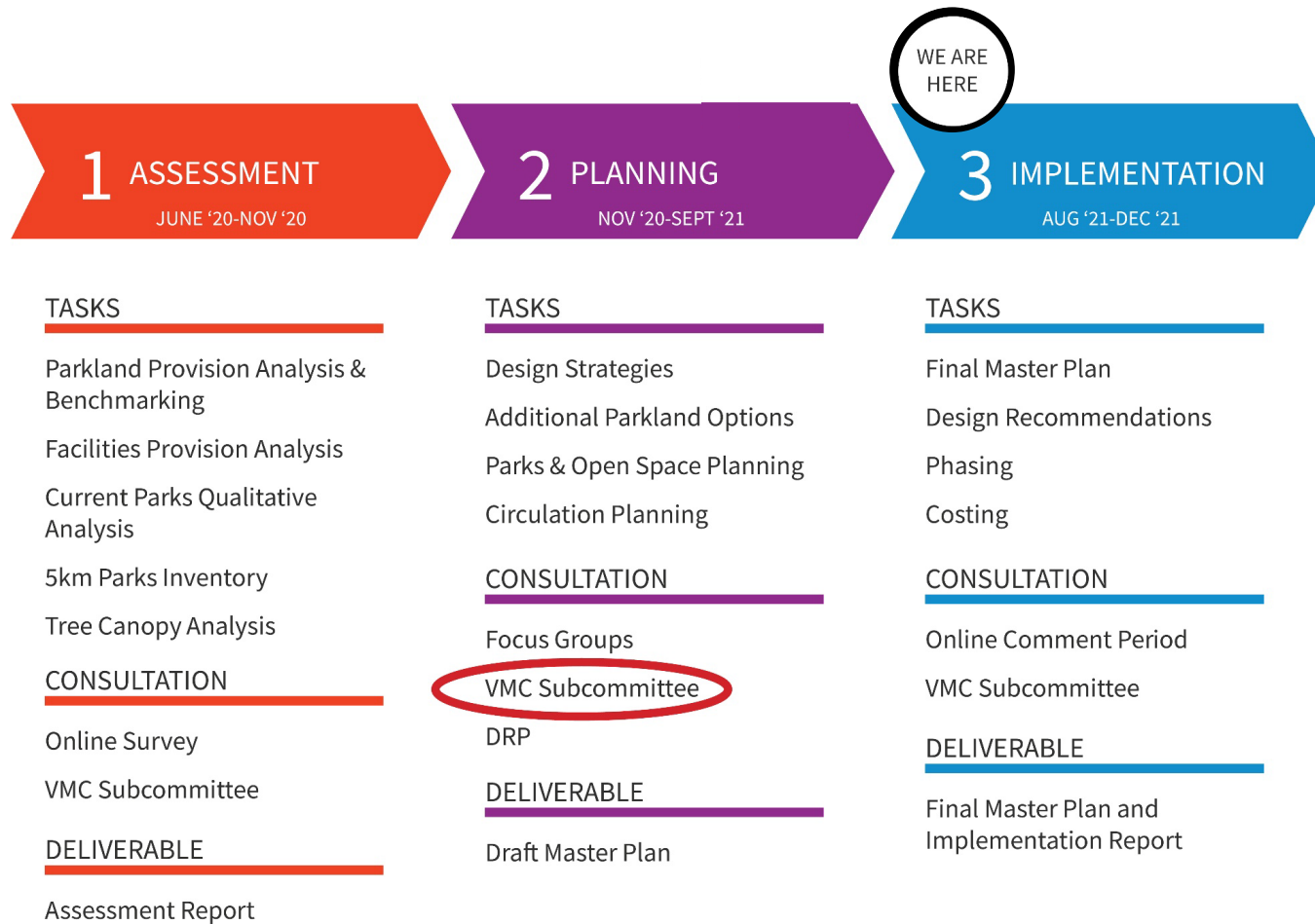
Thank You

Contact: vmctmp@wsp.com

Communication : C 2
VMC Sub-Committee
November 2, 2021
Agenda Item # 3

VMC Parks and Wayfinding Master Plan Update

The City is undertaking the **VMC Parks and Wayfinding Master Plan** to guide the timely development of parks and open spaces in the VMC and create a **world class public realm**.



Process

Progress

- Extensive background work complete
- Making final refinements to Master Plan
- Advancing implementation plan including costing
- Advancing signage and wayfinding strategy

“When it comes to the transformation underway in the VMC, what has you most excited?”



Consultation

Consultation Has Shaped the Master Plan

Assessment Phase

- Online Survey
- Stakeholder Meetings

Master Plan Phase

- Online Focus Groups
- Have Your Say
- Design Review Panel

Implementation Phase

- Have Your Say
- Stakeholder Meetings

Principles

Balance Parks in the VMC

- Create a Parks and Open Space Master Plan with a **compact, balanced, and meaningful** parks and open space network **within** the VMC boundary
- Outdoor facilities should **reflect the unique needs** and demographics of a **dense urban population**
- Parks and open space in or adjacent to the VMC should be **programmed according to a hierarchy** that **recognizes the frequency and importance of use** to ensure that facilities are appropriately located



Principles

Implement Parks Outside the VMC and Strengthen Connectivity

- Facilitate the planning and design of parks **outside** the VMC boundary that include **sports facilities with large footprints**
- Parks and open space within and adjacent to the VMC must be **conveniently and safely accessible** from any part of the VMC – **roads should not function as barriers** to a connected VMC
- Create a safe, convenient **circulation system** – the **optimization** of parkland requires **safe, convenient access** – including south to an extension of the Vaughan Super Trail to provide VMC residents with **access to many kilometers of trails, parks, and open space**

Master Plan

Park Typologies

1 URBAN & NEIGHBOURHOOD PARKS

Land that allows for the full range of typical park uses.

2 ENVIRONMENTAL OPEN SPACE

Land used for environmental purposes, especially stormwater management, that can also support trails and passive recreation.

3 PUBLIC SQUARES

Plazas or promenades that are predominantly paved for urban uses.

4 POPS & MEWS

Privately-owned and maintained land open to the public that supplements parks and squares.

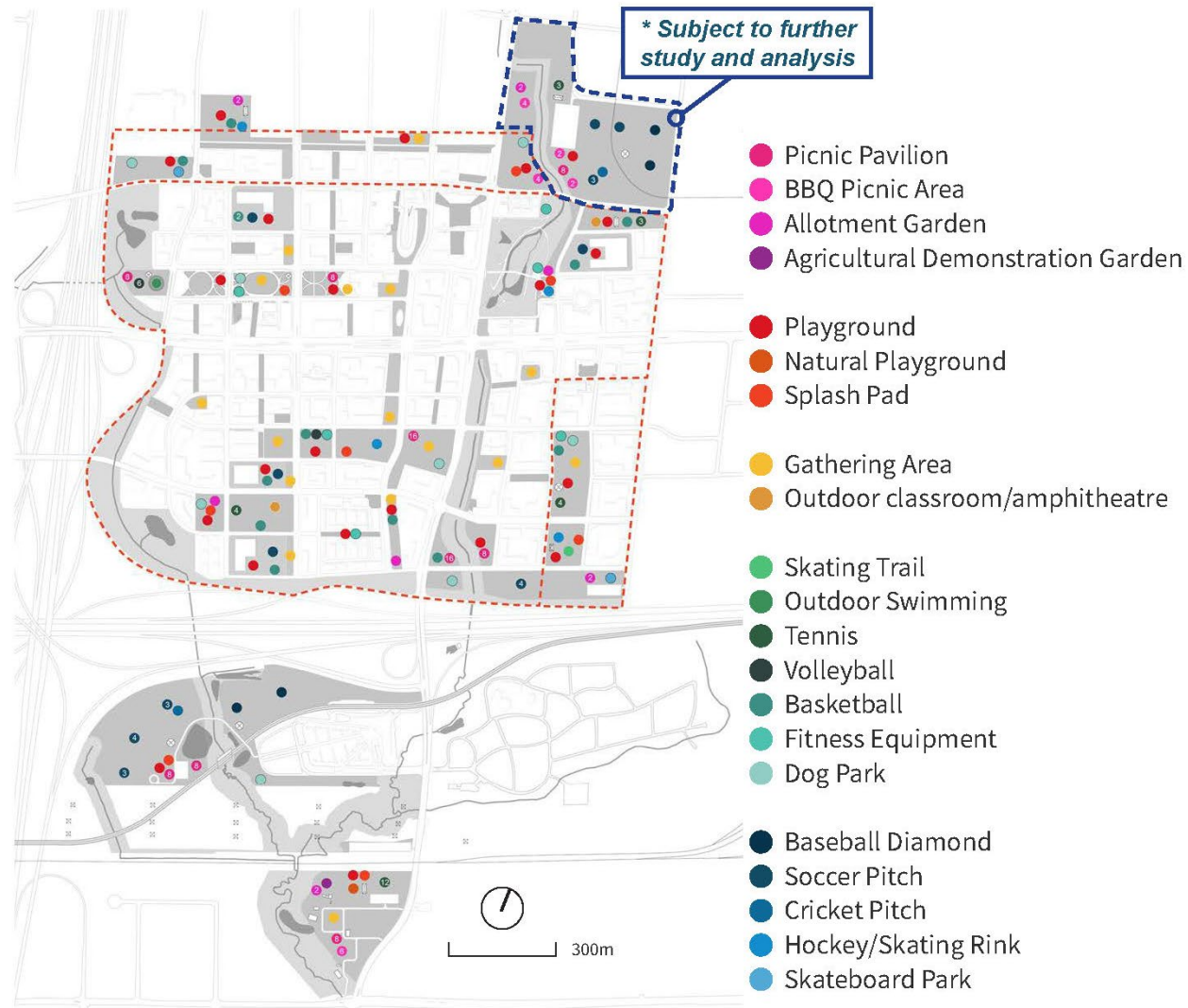
5 SCHOOL YARDS

Land owned by school boards that may contain facilities available for public use.



Facilities

Facilities Provision



- Facility provision is based on anticipated demographics identified in the Assessment Phase
- Facilities are distributed throughout the VMC, and beyond, based on land requirements, ease of access, and anticipated frequency of use
- A majority of gathering spaces and neighbourhood focused facilities are within the VMC boundary
- To approach provision level requirements for all facilities, distribution to potential expansion areas and adjacent lands is required

Circulation

Circulation Characteristics

- Connectivity is key
- Cycling facilities create a strong, connected grid
- Multi-use paths connect green spaces and parks
- Mews create unique, pedestrian oriented urban spaces
- Trails move people through parks



Circulation

The LOOP(s)

- Expand on concepts developed in existing planning documents
- Connect parks and open spaces and provide needed recreational opportunities
- Link to important connection south to Vaughan Super Trail / South York Greenway and parks and green space beyond the VMC



Connecting VMC with Two Loops

- An Urban LOOP, a 4-km path which features the two Urban Parks and Millway Avenue Promenade.
- An Open Space LOOP, a 6-km path which connects all of the VMC's Environmental Open Space.

- B** Bridge
- T** Tunnel
- U** Underpass

Circulation

Crossing 407

- The Jane Street bridge is not designed for pedestrians or cyclists
- Options for crossing the 407 include:
 - A typical bike lane and sidewalk beside the road on the bridge
 - A completely separated pedestrian and cycle crossing on the bridge
 - A culvert under the 407 at the south end of the Black Creek channel



Master Plan

1 DEVELOPMENT TRENDS SUGGEST THE VMC WILL BECOME ONE OF THE MOST DENSE AREAS IN NORTH AMERICA.

2 IT IS CRITICAL TO PROVIDE ADDITIONAL PARKLAND IN OR NEAR THE VMC.

3 PROVIDING REQUIRED RECREATIONAL FACILITIES DEMANDS CAREFUL PLANNING.

4 CONNECTING THE VMC TO OPEN SPACE SOUTH OF HIGHWAY 407 IS IMPORTANT.

5 DEVELOPMENT OF PARKS AND OPEN SPACES MUST CONTINUE TO REFLECT PLANNING GOALS.



Master Plan

VMC and North Adjacent Lands



HIGHWAY 400

HIGHWAY 407

HIGHWAY 407
STATION

BEECHWOOD
CEMETERY

JANE STREET

SOUTH
ADJACENT
LANDS

Master Plan

South Adjacent Lands

DOWNTOWN
vaughan
METROPOLITAN CENTRE

A preliminary framework for **recommendations** is being developed, focused on: phasing, acquisition, costing, operations and maintenance, park governance, and Community Benefit Charges

September Vaughan Design Review Panel Presentation

September Vaughan Design Review Panel Presentation

Video #1

0:01:53

DOWNTOWN

vaughan (5:48)
METROPOLITAN CENTRE ••
16
Megan Torza

5:48

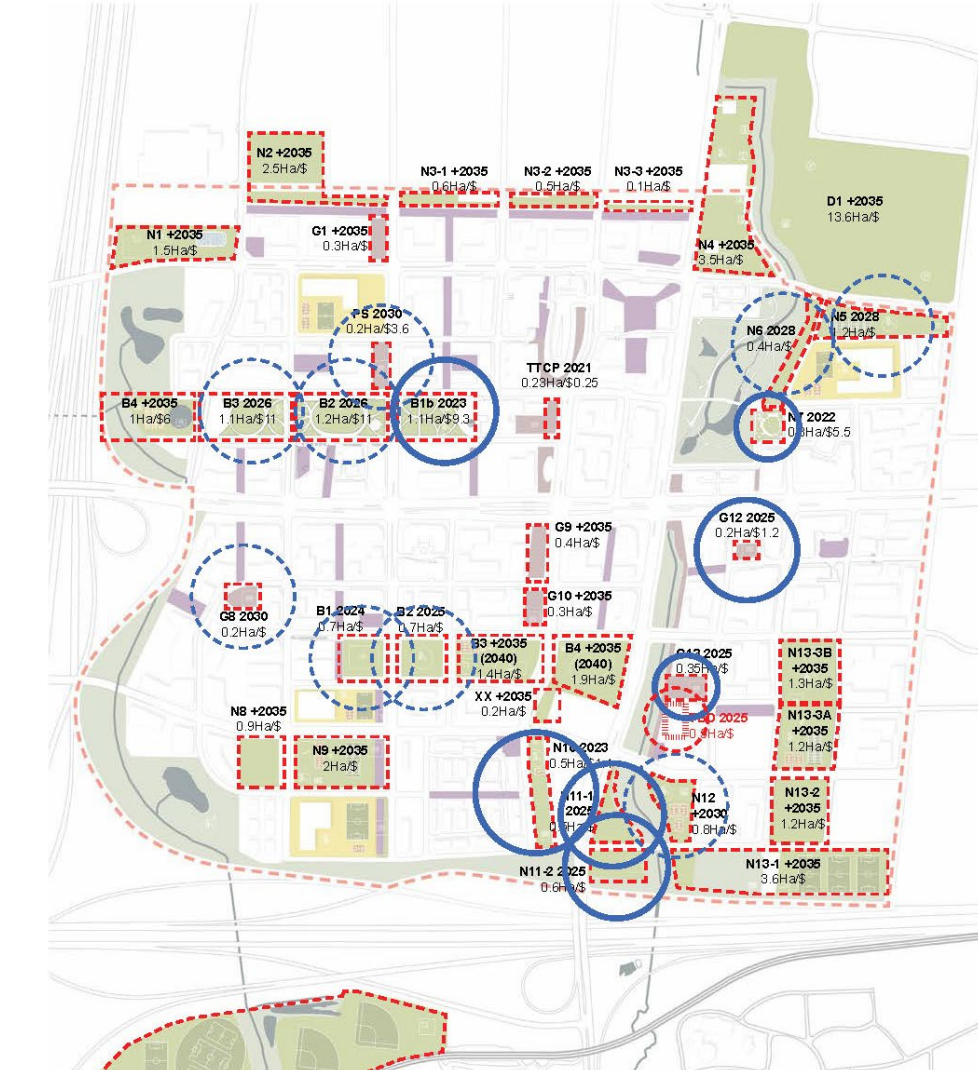
Coordination

DC Background Study Update and Community Benefit Charges Study

- The study is providing information about VMC park typology, timing, and facilities to capture existing and future requirements

Parkland Dedication Guideline

- The study is providing input into park typologies, provision rates, and other elements to contribute to a holistic overview of requirements for intensification areas

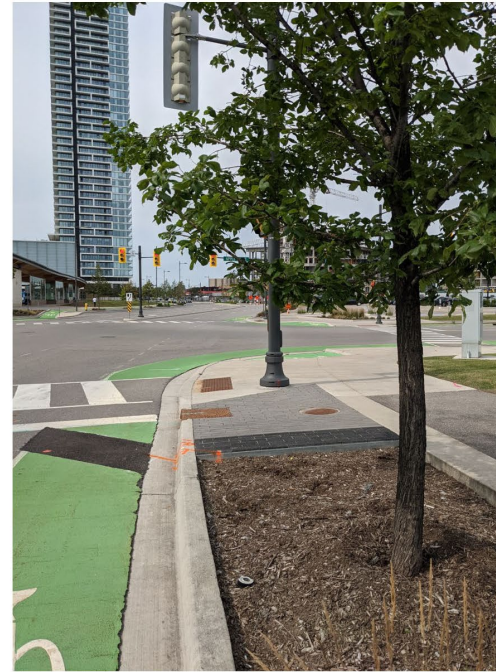


	B	C	D	E	F	G	H	I	J
5	PK-6430-2/VMC30-7-PH1	Block 30 Urban Park Development (VMC30-7) - Smartreit - Phase 1	30	UP	1.10	2022	D/C		1
6	VM-9570-2/VMC29-18	Block 29 Millway Avenue Linear Park Development - QuadReal	29	N1	0.50	2022	D/C		1
7		Block 22 VMC Black Creek - Edgeley Pond Enhancements - Phase 1	22	N1		2022	D/C		1
8	PK-6556-1/VMC22-11	Block 22 VMC Public Square Development - Liberty Cosmos (VMC22-11)	22	PS1	0.20	2022	D/C		1
9	PK-6449-2/VMC29-13	Block 29 Urban Park Development (VMC29-13)	29	UP	1.26	2024	D/C		1
10	PK-6663-2/VMC22-16	Block 22 Public Square Development - Pandolfo (VMC22-16)	22	PS1	0.20	2025	D/C		1
11	PK-6553-2/VMC22-P3/VMC22-P4/VMC22-P5	Block 22 VMC Black Creek Renewal and Park Development - Phase 1 (VMC22-P3/VMC22-P4/V	22	N1	1.10	2025	D/C		1
12		Block 22 VMC Black Creek - Edgeley Pond Enhancements - Phase 2	22	N1		2026	D/C		1
13	VMC30-7-PH2	Block 30 Urban Park Development (VMC30-7) - Smartreit- Phase 2	30	UP	1.48	2026	D/C		1
14	VMC30-7-PH3	Block 30 Urban Park Development (VMC30-7) - Smartreit- Phase 3	30	UP	1.14	2026	D/C		1
15		Block 22 VMC Black Creek - Edgeley Pond Enhancements - Phase 3	22	N1		2028	D/C		1
16	VMC23-12	Block 23 Neighbourhood Park Development (VMC23-12)	23	N1	0.90	2028	D/C		1
17	PK-6637-1/VMC23-2-PH1	Block 23 VMC Edgeley Pond and Park Development Phase 1 (VMC23-2)	23	N1	0.60	2028	D/C		1
18	VMC29-8	Block 29 Public Square Development (VMC29-8)	29	PS1	0.20	2030	D/C		1
19	VMC23-2-PH2	Block 23 VMC Edgeley Pond and Park Development - Phase 2 (VMC23-2)	23	N1	0.90	2031	D/C		1
20	PK-6398-2/VMC30-6	Block 30 Environmental Open Space Park Development (VMC30-6)	30	N2	0.80	2030+	D/C		1
21	PK-6553-2/VMC22-P3/VMC22-P4/VMC22-P5	Block 22 VMC Black Creek Renewal and Park Development - Phase 2 (VMC22-P3/VMC22-P4/V	22	N1	0.80	2030+	D/C		1
22	PK-6428-2/VMC29-1	Block 29 Environmental Open Space Park Development (VMC29-1)	29	N2	0.80	2035+	D/C		1
23	VMC29-5	Block 29 Urban Park Development (VMC29-5)	29	UP	2.20	2035+	D/C		1
24	PK-6429-1/VMC29-10SB	Block 29 Millway Avenue Promenade North Park Development (VMC29-10SB)	29	PS1	0.40	2035+	D/C		1
25	PK-6429-1/VMC29-10SA	Block 29 Millway Avenue Promenade North Park Development (VMC29-10SA)	29	PS1	0.40	2035+	D/C		1
26	VMC29-17	Block 29 Public Square Development - QuadReal (VMC29-17)	29	PS1	0.20	2035+	D/C		1
27	VMC29-9	Block 29 Neighbourhood Park (VMC29-9)	29	N1	1.90	2035+	D/C		1

Wayfinding

Concept Development

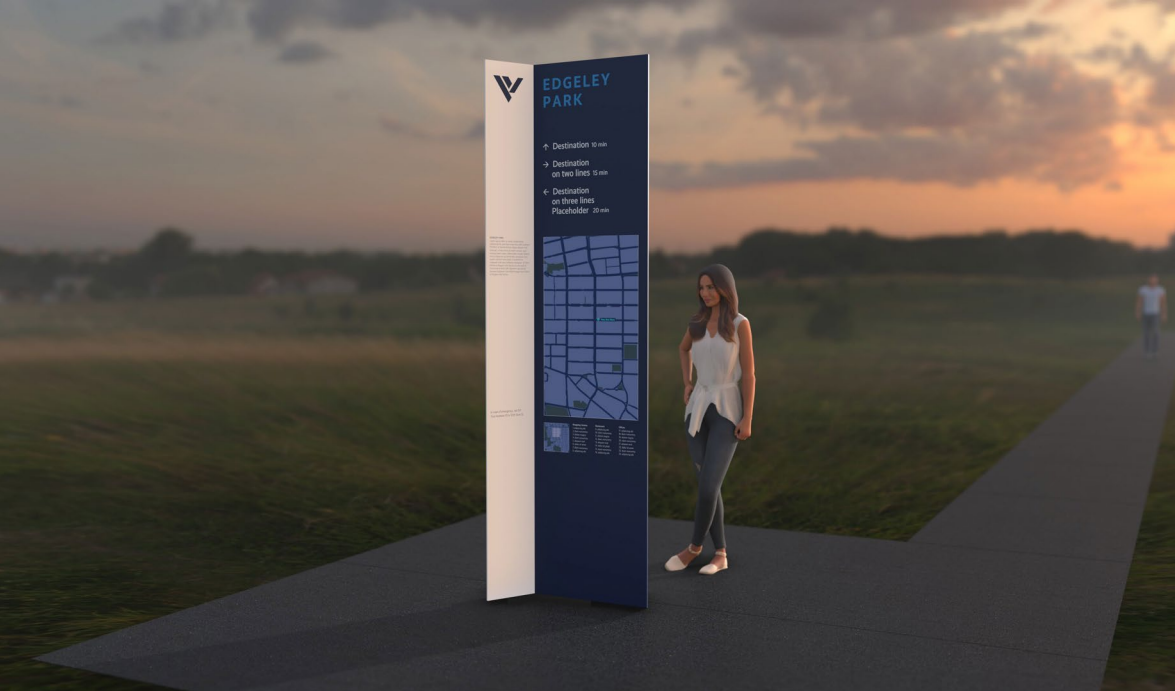
- The consultant continues the **signage and wayfinding design process**, focusing on the public realm
- An example of the forward-thinking ideas being developed, curb-located signage along bike lanes at intersections is being considered
- The location is well suited for cyclists waiting at a stop light, can be installed with relatively low cost, and doesn't interfere with other visual elements in already-busy intersections



Wayfinding

Pylon Sign Concepts

- The consultant is developing **schematic 3D models** of potential options for a VMC pylon sign which will be evaluated by various City departments
- Refined designs, with modifications related to form, graphics, and durability, will be presented to a future VMC Sub-committee
- Once developed, the pylon typology will guide the design and creation of a family of additional sign typologies that will address the various needs of the VMC parks and open space network



Home > Major Projects and Reports > Policy Planning Projects > VMC Parks and Wayfinding Master Plan

VMC PARKS AND WAYFINDING MASTER PLAN



The Vaughan Metropolitan Centre (VMC) is Vaughan's emerging downtown. The City of Vaughan is undertaking the VMC Parks and Wayfinding Master Plan to guide the timely development of parks and open spaces in the VMC and create a world class public realm. It includes the creation of a signage strategy to make it easier to navigate Vaughan's new downtown. The study presents a rare opportunity to think boldly about the city, the way people understand and move through it, and the role of parks and open space in modern urban life.

Collecting feedback from the community is vital to the success of this plan. Through collaboration with residents and stakeholders, the City is committed to developing a Parks and Wayfinding Master Plan that is innovative, accessible, sustainable and safe, and fosters connectivity, physical activity, health and wellness for all citizens.

A survey was available from Oct. 16 to Nov. 30 for citizens to share their thoughts on potential park and open space amenities and desires for wayfinding systems. The survey is now closed; thank you to those who participated. Results and findings from the survey will be posted to this webpage so check back often for updates and future opportunities for engagement.



Engagement

Virtual Connections

- Current consultation methods are focusing on **virtual connections**
- Upcoming engagement will utilize video on the City's **Have Your Say** page to generate **online feedback** and **validation** of the master plan
- **Landowner meetings** will be organized in Q4 2021



Parks and Wayfinding Master Plan - Next Steps

Finalize Master Plan

- **Final modifications** to master plan and development of draft master plan document

Advance Signage

- **Refine concepts** and present for feedback

Continue Community Consultation

- Present master plan to **community** for **feedback** and **validation**

Parks and Wayfinding Master Plan - Next Steps

Advance Implementation Plan

- Refine **phasing** and **complete costing**
- Identify **funding gaps**
- Coordinate with **DC** and **CBC studies**
- Identify **O&M requirements**

Park Governance

- Include **park governance models** in final document

Develop Recommendations

- Final **master plan recommendations** to be brought forward



Connect with VMC Program

Christina Bruce

Director, Policy Planning and
Special Programs

Christina.Bruce@vaughan.ca

Amy Roots

Senior Manager, VMC Program

Amy.Roots@vaughan.ca

Jennifer Cappola-Logullo

Manager, Development
Engineering, VMC Program

Jennifer.Logullo@vaughan.ca

Gerardo Paez Alonso

Manager, Strategic Parks
Initiatives, VMC Program

Gerardo.PaezAlonso@vaughan.ca

vaughan.ca/VMCParks



DOWNTOWN

vaughan

METROPOLITAN CENTRE