

Communication : C 2
VMC Sub-Committee
November 2, 2021
Agenda Item # 3

VMC Parks and Wayfinding Master Plan Update

VMC Sub-committee
November 2, 2021

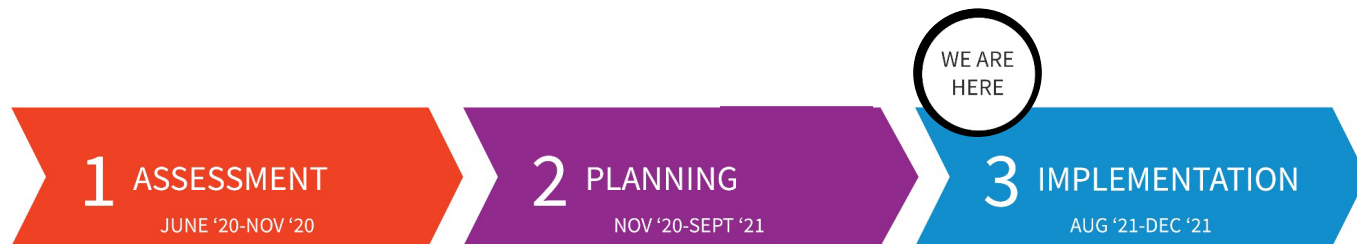


DOWNTOWN

vaughan

METROPOLITAN CENTRE

The City is undertaking the **VMC Parks and Wayfinding Master Plan** to guide the timely development of parks and open spaces in the VMC and create a **world class public realm**.



TASKS

- Parkland Provision Analysis & Benchmarking
- Facilities Provision Analysis
- Current Parks Qualitative Analysis
- 5km Parks Inventory
- Tree Canopy Analysis

CONSULTATION

- Online Survey
- VMC Subcommittee

DELIVERABLE

- Assessment Report

TASKS

- Design Strategies
- Additional Parkland Options
- Parks & Open Space Planning
- Circulation Planning

CONSULTATION

- Focus Groups
- VMC Subcommittee

DRP

DELIVERABLE

- Draft Master Plan

WE ARE
HERE

3 IMPLEMENTATION

AUG '21-DEC '21

TASKS

- Final Master Plan
- Design Recommendations
- Phasing
- Costing

CONSULTATION

- Online Comment Period
- VMC Subcommittee

DELIVERABLE

- Final Master Plan and Implementation Report

Process

Progress

- Extensive background work complete
- Making final refinements to Master Plan
- Advancing implementation plan including costing
- Advancing signage and wayfinding strategy

“When it comes to the transformation underway in the VMC, what has you most excited?”



Consultation

Consultation Has Shaped the Master Plan

Assessment Phase

- Online Survey
- Stakeholder Meetings

Master Plan Phase

- Online Focus Groups
- Have Your Say
- Design Review Panel

Implementation Phase

- Have Your Say
- Stakeholder Meetings

Principles

Balance Parks in the VMC

- Create a Parks and Open Space Master Plan with a **compact, balanced, and meaningful** parks and open space network **within** the VMC boundary
- Outdoor facilities should **reflect the unique needs** and demographics of a **dense urban population**
- Parks and open space in or adjacent to the VMC should be **programmed according to a hierarchy** that **recognizes the frequency and importance of use** to ensure that facilities are appropriately located



Principles

Implement Parks Outside the VMC and Strengthen Connectivity

- Facilitate the planning and design of parks **outside** the VMC boundary that include **sports facilities with large footprints**
- Parks and open space within and adjacent to the VMC must be **conveniently and safely accessible** from any part of the VMC – **roads should not function as barriers** to a connected VMC
- Create a safe, convenient **circulation system** – the **optimization** of parkland requires **safe, convenient access** – including south to an extension of the Vaughan Super Trail to provide VMC residents with **access to many kilometers of trails, parks, and open space**



Master Plan

Park Typologies

1 URBAN & NEIGHBOURHOOD PARKS

Land that allows for the full range of typical park uses.

2 ENVIRONMENTAL OPEN SPACE

Land used for environmental purposes, especially stormwater management, that can also support trails and passive recreation.

3 PUBLIC SQUARES

Plazas or promenades that are predominantly paved for urban uses.

4 POPS & MEWS

Privately-owned and maintained land open to the public that supplements parks and squares.

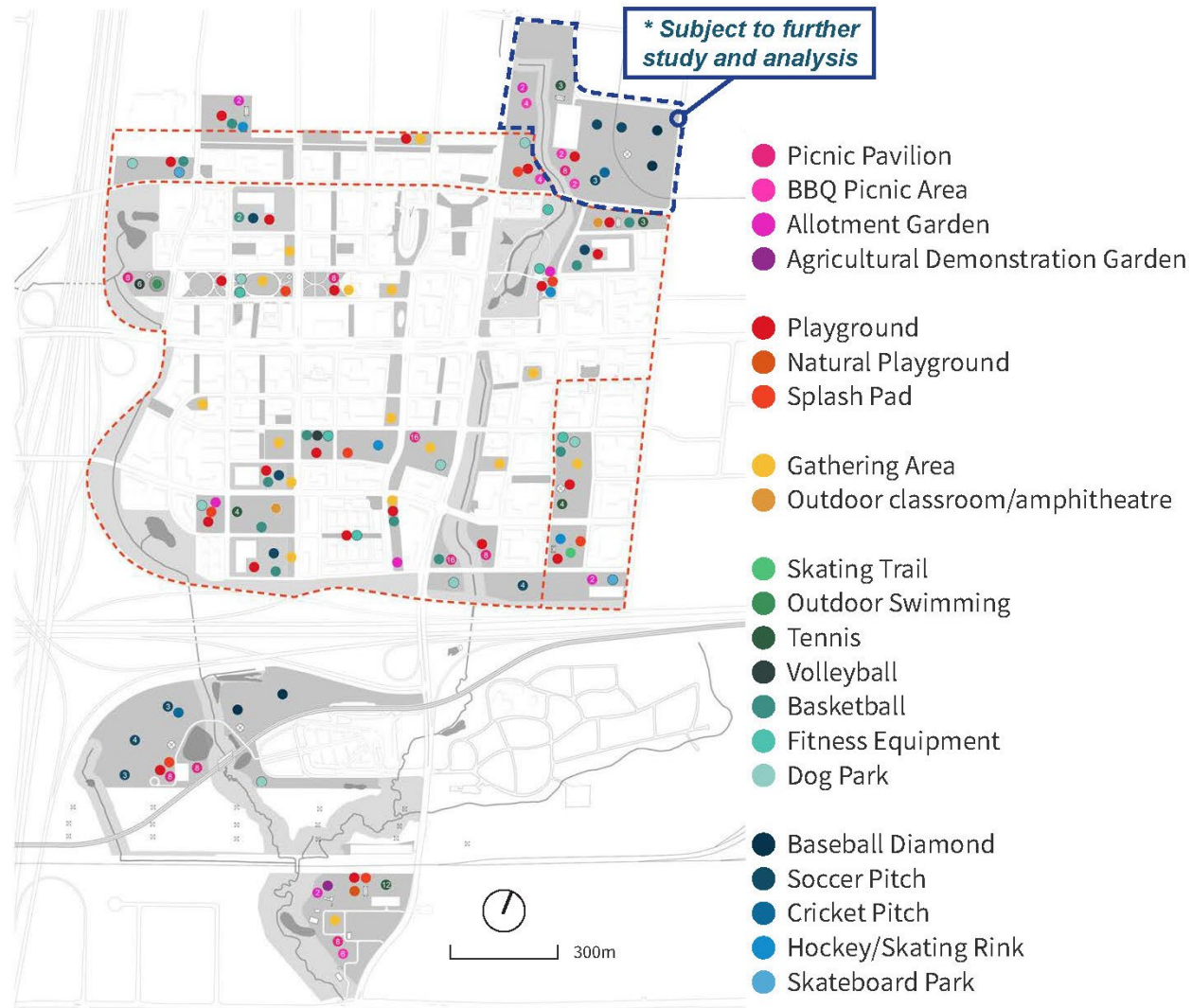
5 SCHOOL YARDS

Land owned by school boards that may contain facilities available for public use.



Facilities

Facilities Provision



- Facility provision is based on anticipated demographics identified in the Assessment Phase
- Facilities are distributed throughout the VMC, and beyond, based on land requirements, ease of access, and anticipated frequency of use
- A majority of gathering spaces and neighbourhood focused facilities are within the VMC boundary
- To approach provision level requirements for all facilities, distribution to potential expansion areas and adjacent lands is required

Circulation

Circulation Characteristics

- Connectivity is key
- Cycling facilities create a strong, connected grid
- Multi-use paths connect green spaces and parks
- Mews create unique, pedestrian oriented urban spaces
- Trails move people through parks



Circulation

The LOOP(s)

- Expand on concepts developed in existing planning documents
- Connect parks and open spaces and provide needed recreational opportunities
- Link to important connection south to Vaughan Super Trail / South York Greenway and parks and green space beyond the VMC



Connecting VMC with Two Loops

— An Urban LOOP, a 4-km path which features the two Urban Parks and Millway Avenue Promenade.

— An Open Space LOOP, a 6-km path which connects all of the VMC's Environmental Open Space.

- B** Bridge
- T** Tunnel
- U** Underpass

Circulation

Crossing 407

- The Jane Street bridge is not designed for pedestrians or cyclists
- Options for crossing the 407 include:
 - A typical bike lane and sidewalk beside the road on the bridge
 - A completely separated pedestrian and cycle crossing on the bridge
 - A culvert under the 407 at the south end of the Black Creek channel



Master Plan



1 DEVELOPMENT TRENDS SUGGEST THE VMC WILL BECOME ONE OF THE MOST DENSE AREAS IN NORTH AMERICA.

2 IT IS CRITICAL TO PROVIDE ADDITIONAL PARKLAND IN OR NEAR THE VMC.

3 PROVIDING REQUIRED RECREATIONAL FACILITIES DEMANDS CAREFUL PLANNING.

4 CONNECTING THE VMC TO OPEN SPACE SOUTH OF HIGHWAY 407 IS IMPORTANT.

5 DEVELOPMENT OF PARKS AND OPEN SPACES MUST CONTINUE TO REFLECT PLANNING GOALS.

Master Plan

VMC and North Adjacent Lands

** Subject to further study and analysis*



HIGHWAY 404

EDGELEY BOULEVARD

JANE STREET

NORTH URBAN PARK

VMC STATION

EDGELEY POND AND PARK

NORTH ADJACENT LANDS

HIGHWAY 7

SOUTH URBAN PARK

BLACK CREEK



HIGHWAY 407

HIGHWAY 407

SOUTH ADJACENT LANDS

HIGHWAY 407 STATION

BEECHWOOD CEMETERY

JANE STREET

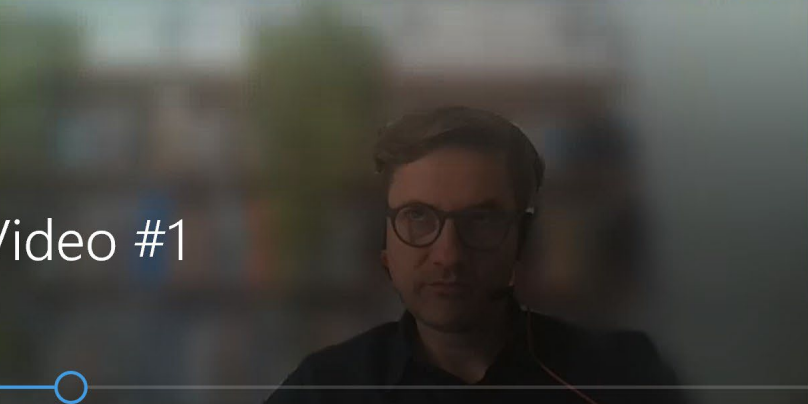
Master Plan

South Adjacent Lands

A preliminary framework for **recommendations** is being developed, focused on: phasing, acquisition, costing, operations and maintenance, park governance, and Community Benefit Charges

Vaughan DRP

September Vaughan Design Review Panel Presentation



0:01:53

Control bar with icons for: Mute, Chat, and a row of participant avatars labeled VO, MR, UM, and others.

Participant names: Chrisa Assimopoulos, Alfredo Landaeta, Shirin Rohani, Megan Torza

vaughan METROPOLITAN CENTRE
16

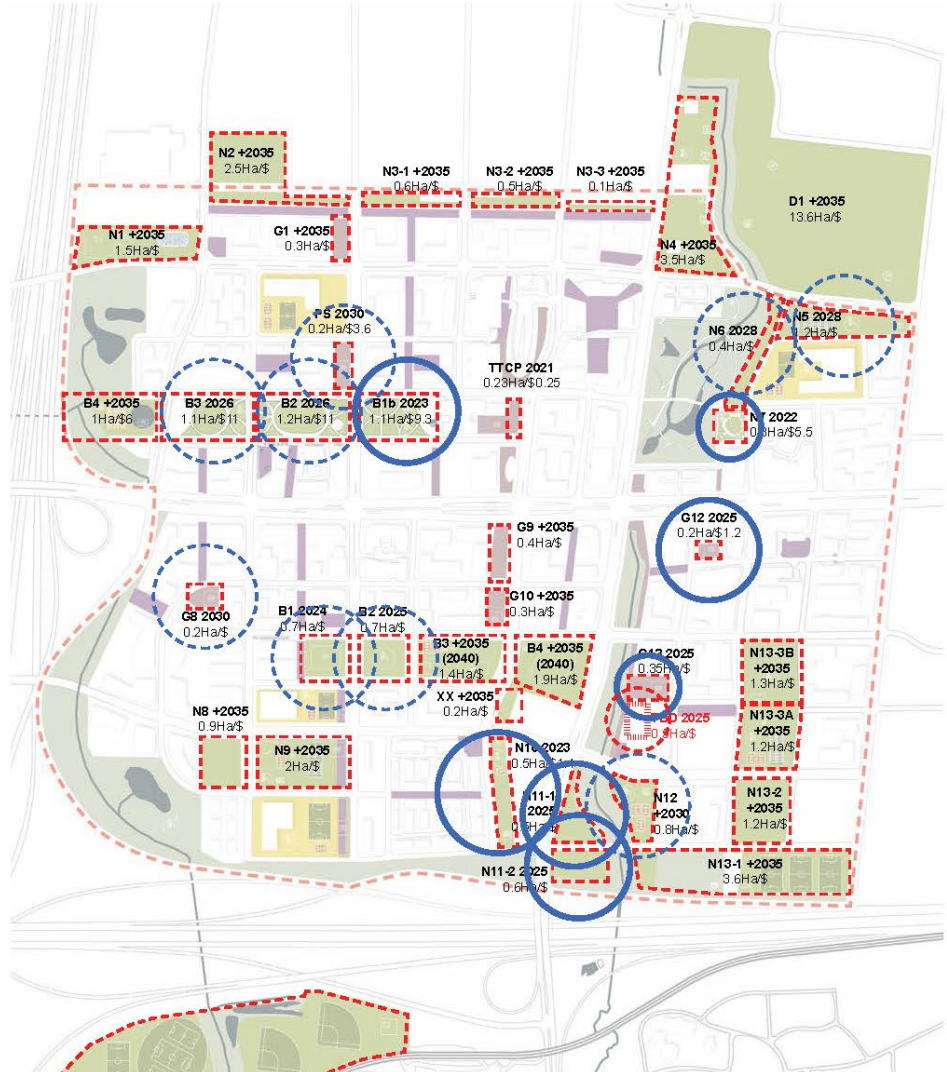
Coordination

DC Background Study Update and Community Benefit Charges Study

- The study is providing information about VMC park typology, timing, and facilities to capture existing and future requirements

Parkland Dedication Guideline

- The study is providing input into park typologies, provision rates, and other elements to contribute to a holistic overview of requirements for intensification areas

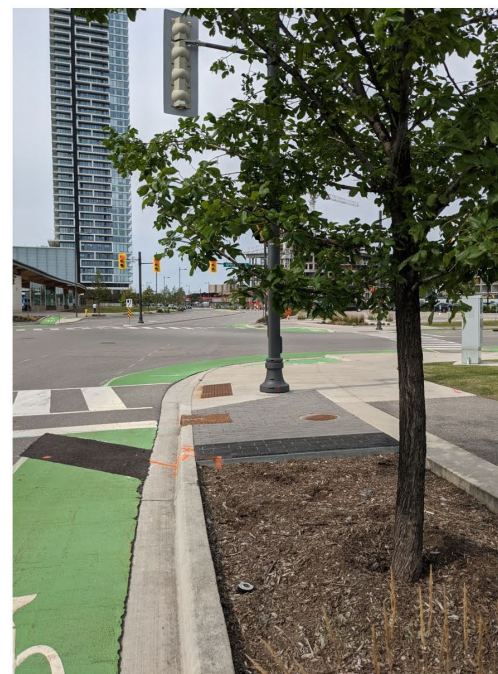
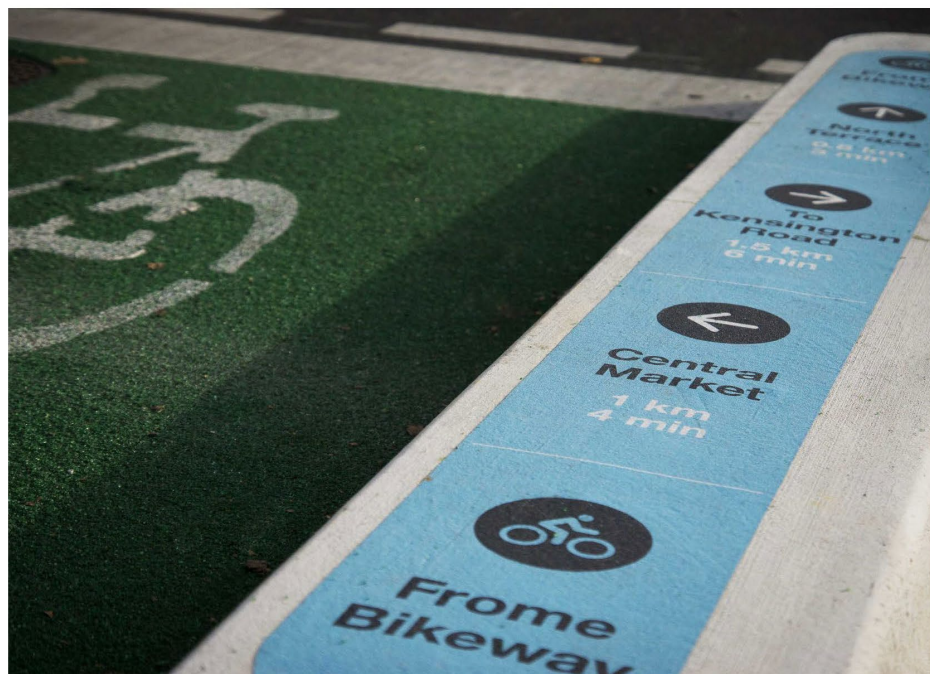


A	B	C	D	E	F	G	H	I	J
5	PK-6430-2/VMC30-7-PH1	Block 30 Urban Park Development (VMC30-7) - Smartreit - Phase 1	30	UP	1.10	2022	DIC	1	1
6	VM-9570-2/VMC29-18	Block 29 Millway Avenue Linear Park Development - QuadReal	29	N1	0.50	2022	DIC	1	1
7		Block 22 VMC Black Creek - Edgeley Pond Enhancements - Phase 1	22	N1		2022	DIC	1	1
8	PK-6556-1/VMC22-11	Block 22 VMC Public Square Development - Liberty Cosmos (VMC22-11)	22	PS1	0.20	2022	DIC	1	1
9	PK-6449-2/VMC29-13	Block 29 Urban Park Development (VMC29-13)	29	UP	1.26	2024	DIC	1	1
10	PK-6663-2/VMC22-16	Block 22 Public Square Development - Pandolfo (VMC22-16)	22	PS1	0.20	2025	DIC	1	1
11	PK-6553-2/VMC22-P3/VMC22-P4/VMC22-P4/V	Block 22 VMC Black Creek Renewal and Park Development - Phase 1 (VMC22-P3/VMC22-P4/V)	22	N1	1.10	2025	DIC	1	1
12		Block 22 VMC Black Creek - Edgeley Pond Enhancements - Phase 2	22	N1		2026	DIC	1	1
13	VMC30-7-PH2	Block 30 Urban Park Development (VMC30-7) - Smartreit- Phase 2	30	UP	1.48	2026	DIC	1	1
14	VMC30-7-PH3	Block 30 Urban Park Development (VMC30-7) - Smartreit- Phase 3	30	UP	1.14	2026	DIC	1	1
15		Block 22 VMC Black Creek - Edgeley Pond Enhancements - Phase 3	22	N1		2028	DIC	1	1
16	VMC23-12	Block 23 Neighbourhood Park Development (VMC23-12)	23	N1	0.90	2028	DIC	1	1
17	PK-6637-1/VMC23-2-PH1	Block 23 VMC Edgeley Pond and Park Development Phase-1 (VMC23-2)	23	N1	0.60	2028	DIC	1	1
18	VMC29-8	Block 29 Public Square Development (VMC29-8)	29	PS1	0.20	2030	DIC	1	1
19	VMC23-2-PH2	Block 23 VMC Edgeley Pond and Park Development - Phase 2 (VMC23-2)	23	N1	0.90	2031	DIC	1	1
20	PK-6398-2/VMC30-6	Block 30 Environmental Open Space Park Development (VMC30-6)	30	N2	0.80	2030+	DIC	1	1
21	PK-6553-2/VMC22-P3/VMC22-P4/VMC22-P4/V	Block 22 VMC Black Creek Renewal and Park Development - Phase 2 (VMC22-P3/VMC22-P4/V)	22	N1	0.80	2030+	DIC	1	1
22	PK-6428-2/VMC29-1	Block 29 Environmental Open Space Park Development (VMC29-1)	29	N2	0.80	2035+	DIC	1	1
23	VMC29-5	Block 29 Urban Park Development (VMC29-5)	29	UP	2.20	2035+	DIC	1	1
24	PK-6429-1/VMC29-10SB	Block 29 Millway Avenue Promenade North Park Development (VMC29-10SB)	29	PS1	0.40	2035+	DIC	1	1
25	PK-6429-1/VMC29-10SA	Block 29 Millway Avenue Promenade North Park Development (VMC29-10SA)	29	PS1	0.40	2035+	DIC	1	1
26	VMC29-17	Block 29 Public Square Development - QuadReal (VMC29-17)	29	PS1	0.20	2035+	DIC	1	1
27	VMC29-9	Block 29 Neighbourhood Park (VMC29-9)	29	N1	1.90	2035+	DIC	1	1

Wayfinding

Concept Development

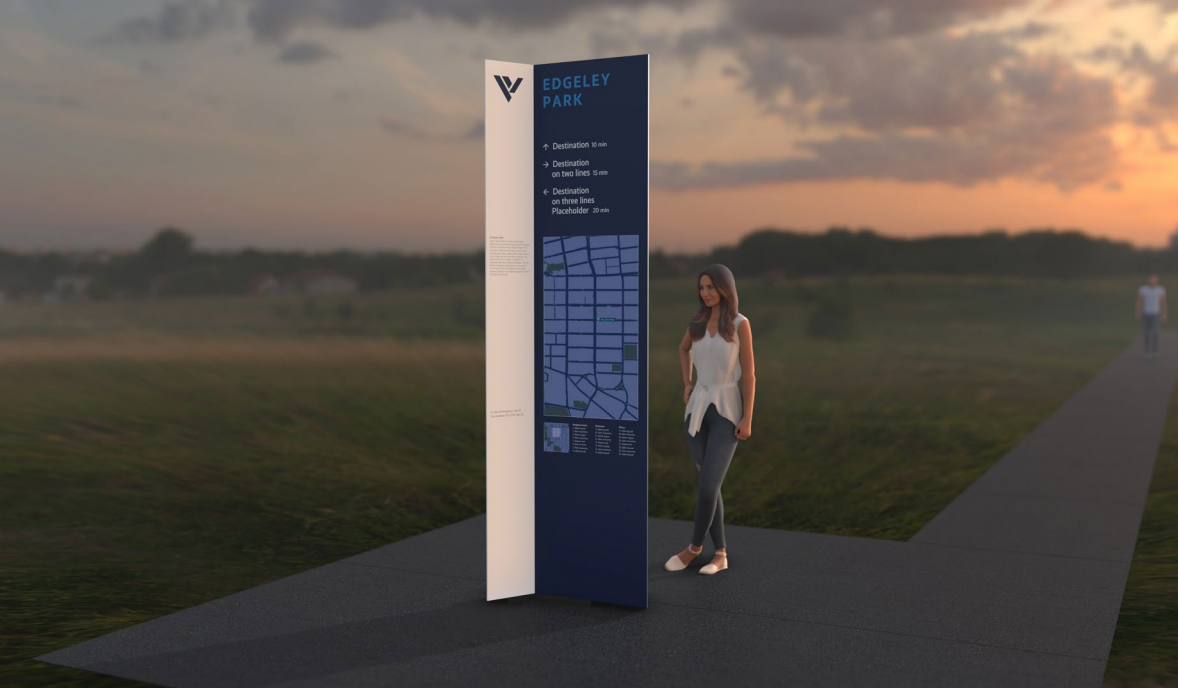
- The consultant continues the **signage and wayfinding design process**, focusing on the public realm
- An example of the forward-thinking ideas being developed, curb-located signage along bike lanes at intersections is being considered
- The location is well suited for cyclists waiting at a stop light, can be installed with relatively low cost, and doesn't interfere with other visual elements in already-busy intersections



Wayfinding

Pylon Sign Concepts

- The consultant is developing **schematic 3D models** of potential options for a VMC pylon sign which will be evaluated by various City departments
- Refined designs, with modifications related to form, graphics, and durability, will be presented to a future VMC Subcommittee
- Once developed, the pylon typology will guide the design and creation of a family of additional sign typologies that will address the various needs of the VMC parks and open space network



Home > Major Projects and Reports > Policy Planning Projects > VMC Parks and Wayfinding Master Plan

VMC PARKS AND WAYFINDING MASTER PLAN



The Vaughan Metropolitan Centre (VMC) is Vaughan's emerging downtown. The City of Vaughan is undertaking the VMC Parks and Wayfinding Master Plan to guide the timely development of parks and open spaces in the VMC and create a world class public realm. It includes the creation of a signage strategy to make it easier to navigate Vaughan's new downtown. The study presents a rare opportunity to think boldly about the city, the way people understand and move through it, and the role of parks and open space in modern urban life.

Collecting feedback from the community is vital to the success of this plan. Through collaboration with residents and stakeholders, the City is committed to developing a Parks and Wayfinding Master Plan that is innovative, accessible, sustainable and safe, and fosters connectivity, physical activity, health and wellness for all citizens.

A survey was available from Oct. 16 to Nov. 30 for citizens to share their thoughts on potential park and open space amenities and desires for wayfinding systems. The survey is now closed; thank you to those who participated. Results and findings from the survey will be posted to this webpage so check back often for updates and future opportunities for engagement.



Engagement

Virtual Connections

- Current consultation methods are focusing on **virtual connections**
- Upcoming engagement will utilize video on the City's **Have Your Say** page to generate **online feedback** and **validation** of the master plan
- **Landowner meetings** will be organized in Q4 2021

Parks and Wayfinding Master Plan - Next Steps

Finalize Master Plan

- **Final modifications** to master plan and development of draft master plan document

Advance Signage

- **Refine concepts** and present for feedback

Continue Community Consultation

- Present master plan to **community** for **feedback** and **validation**



Parks and Wayfinding Master Plan - Next Steps

Advance Implementation Plan

- Refine **phasing** and **complete costing**
- Identify **funding gaps**
- Coordinate with **DC** and **CBC studies**
- Identify **O&M requirements**

Park Governance

- Include **park governance models** in final document

Develop Recommendations

- Final **master plan recommendations** to be brought forward



Connect with VMC Program

Christina Bruce

Director, Policy Planning and
Special Programs

Christina.Bruce@vaughan.ca

Amy Roots

Senior Manager, VMC Program

Amy.Roots@vaughan.ca

Jennifer Cappola-Logullo

Manager, Development
Engineering, VMC Program

Jennifer.Logullo@vaughan.ca

Gerardo Paez Alonso

Manager, Strategic Parks
Initiatives, VMC Program

Gerardo.PaezAlonso@vaughan.ca

vaughan.ca/VMCParks



DOWNTOWN

vaughan

METROPOLITAN CENTRE