

WOODBIDGE AVENUE STREETSCAPE

Project Update

WOODBIDGE HERITAGE CONSERVATION DISTRICT



Overall Work Scope



OVERVIEW PLAN

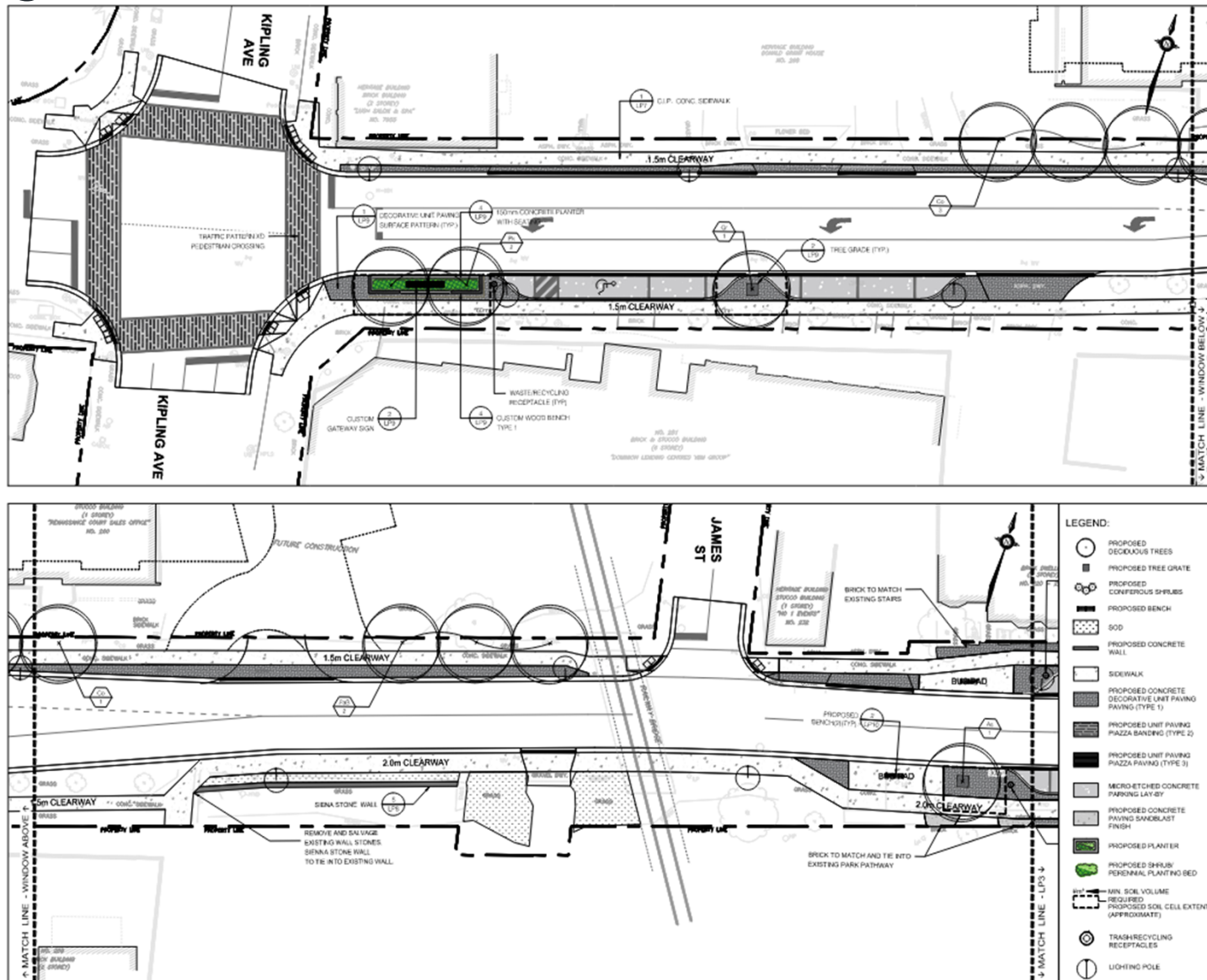
This project will include the reconstruction of Woodbridge Avenue between Kipling Avenue (western limit) and Islington Avenue (eastern limit). This will include underground service replacements and a reworking of the urban areas through the project.

This design was guided by the Woodbridge Avenue Streetscape Design and Guidelines prepared in April 2017. These streetscape design and guidelines provided a preliminary starting point for our design. We have tried to respect these recommendations but have had to look at potential alternative solutions based on the current and future needs of this corridor.

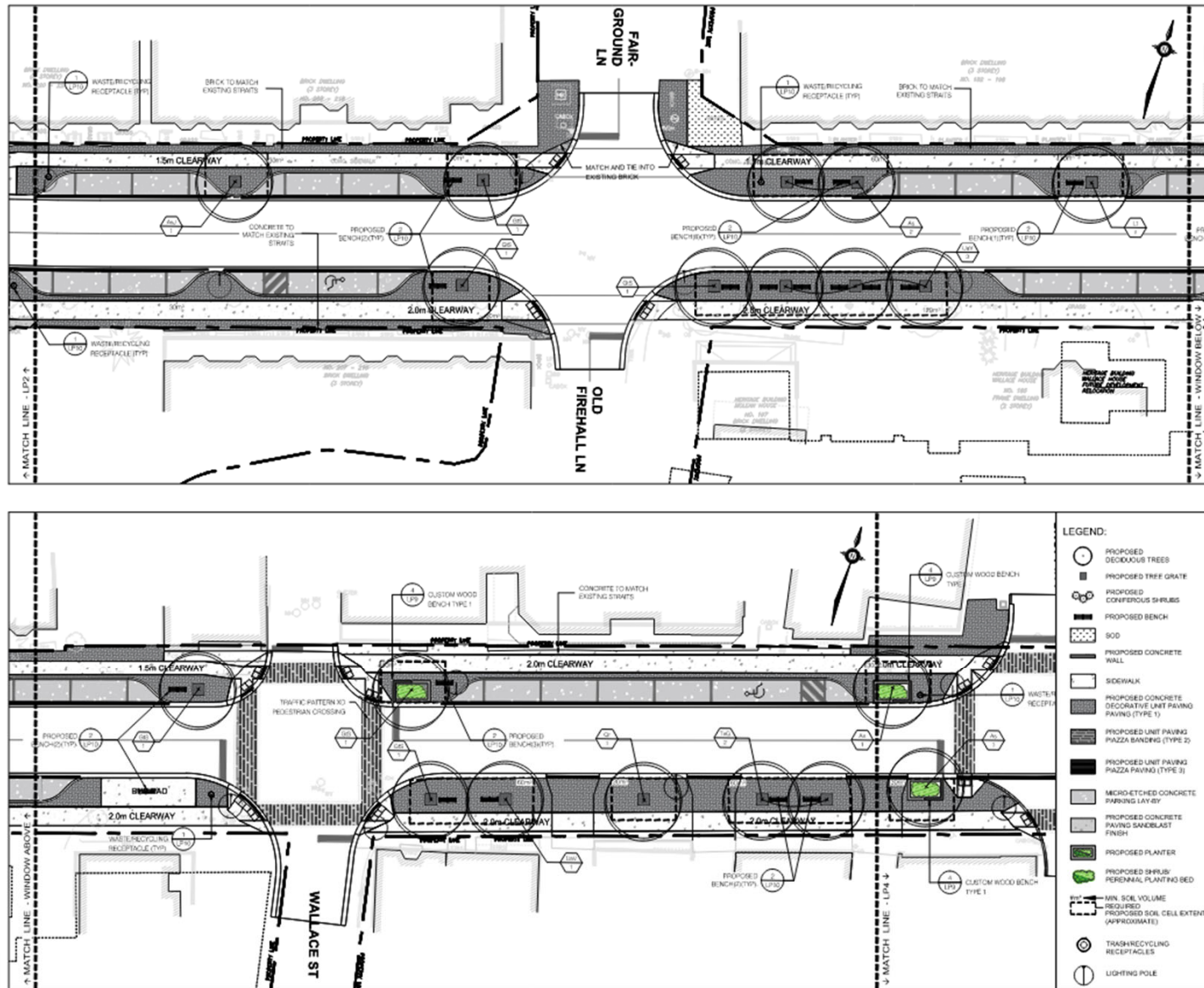
We are currently at a 60% Design Phase of the project.



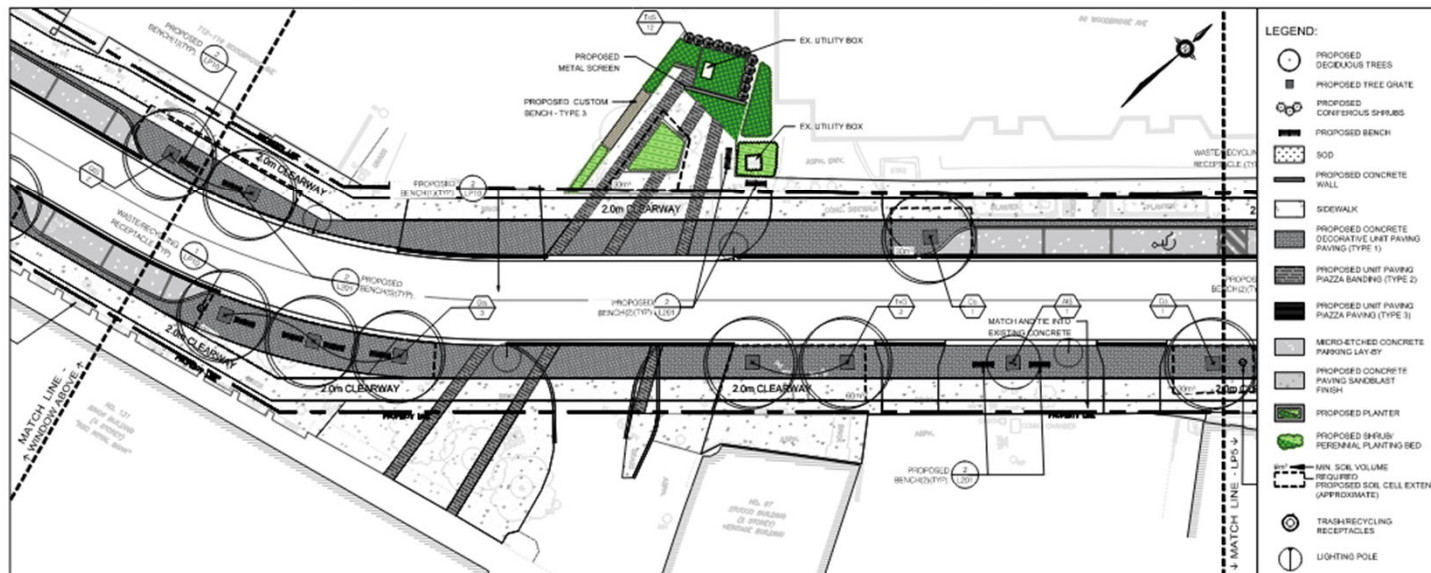
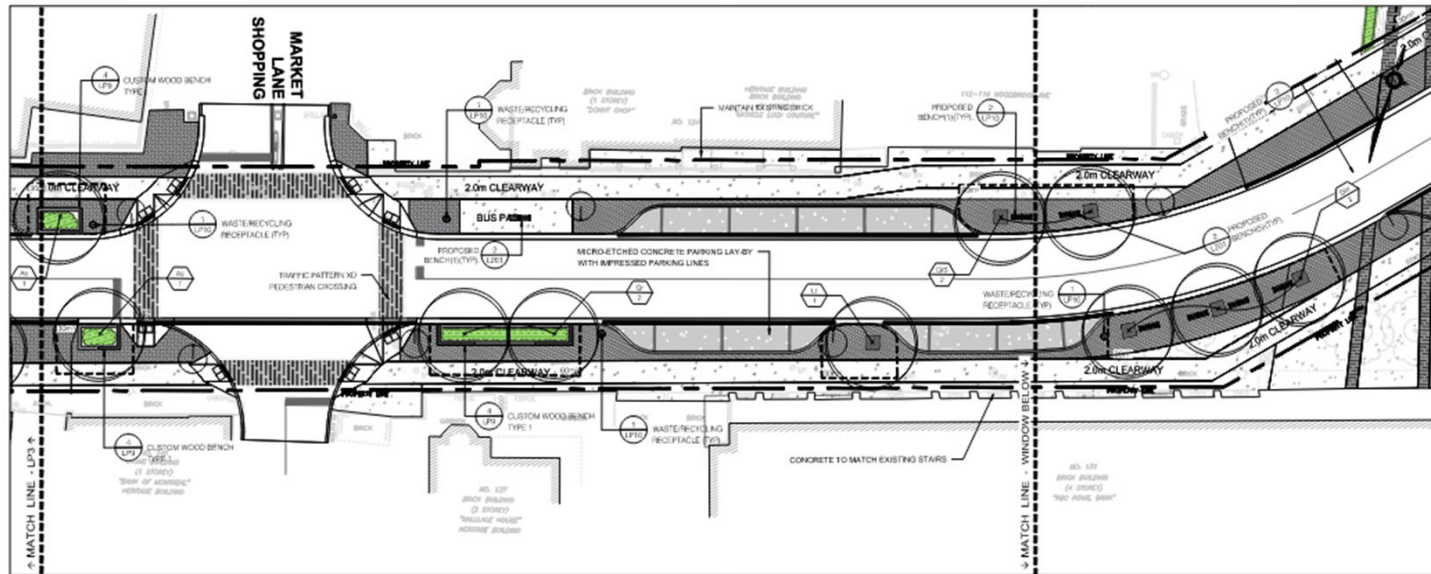
Design Plans



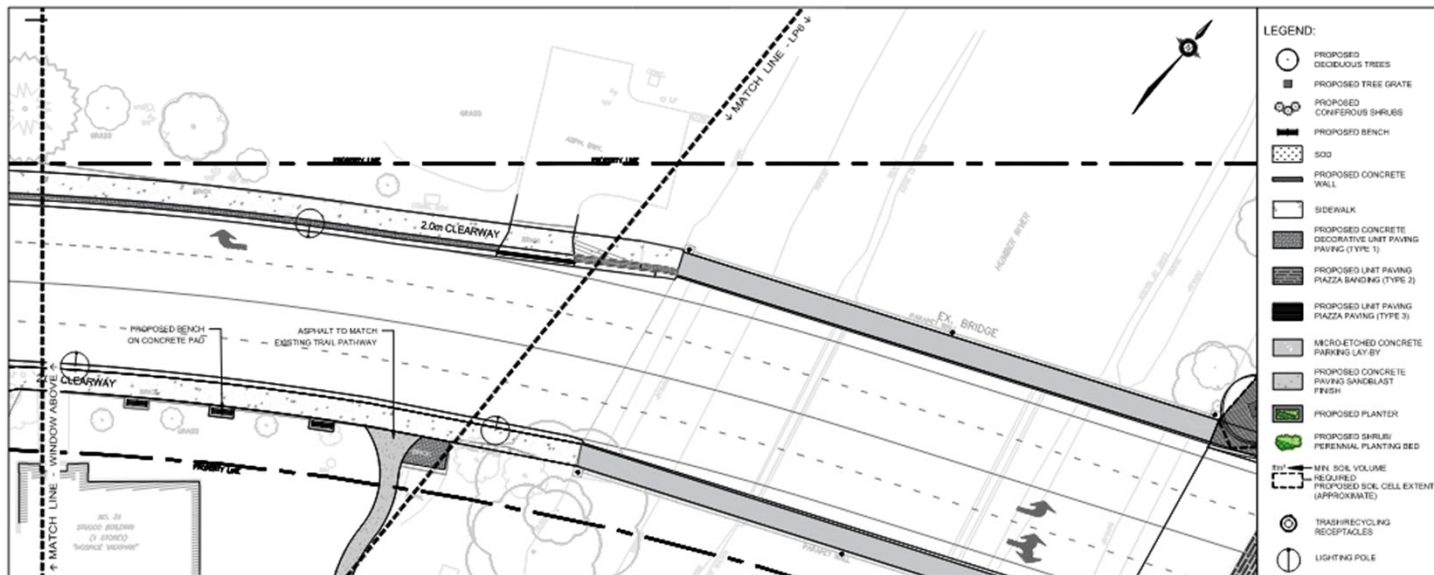
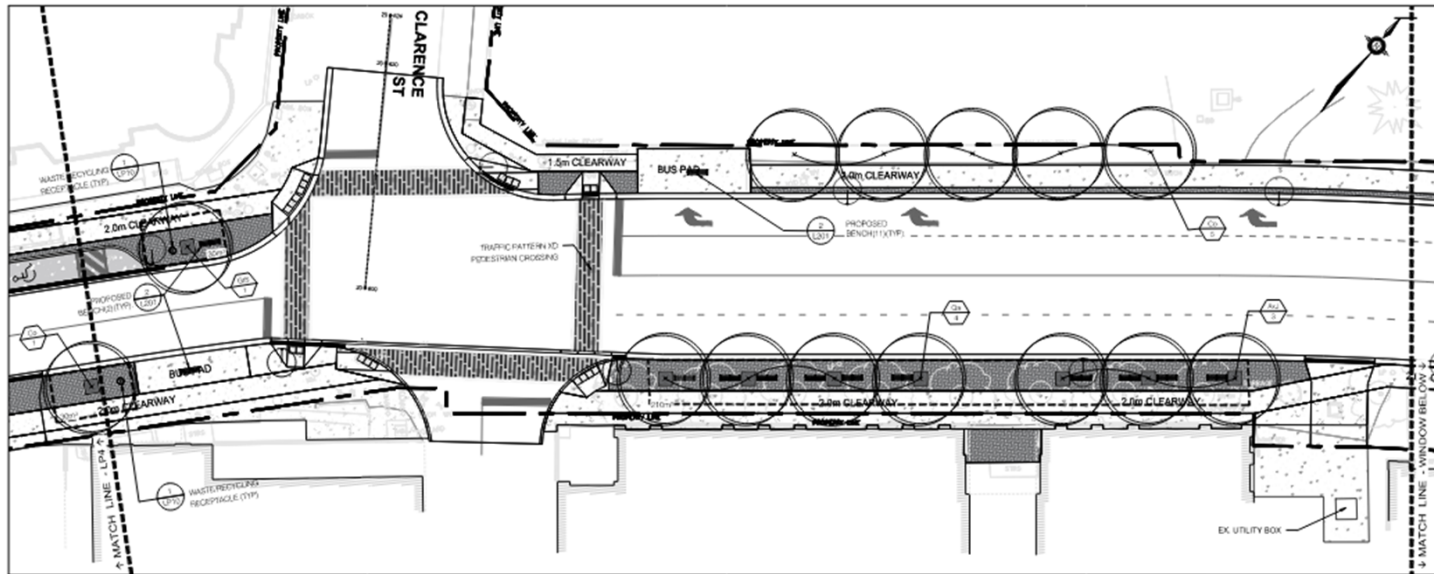
Design Plans



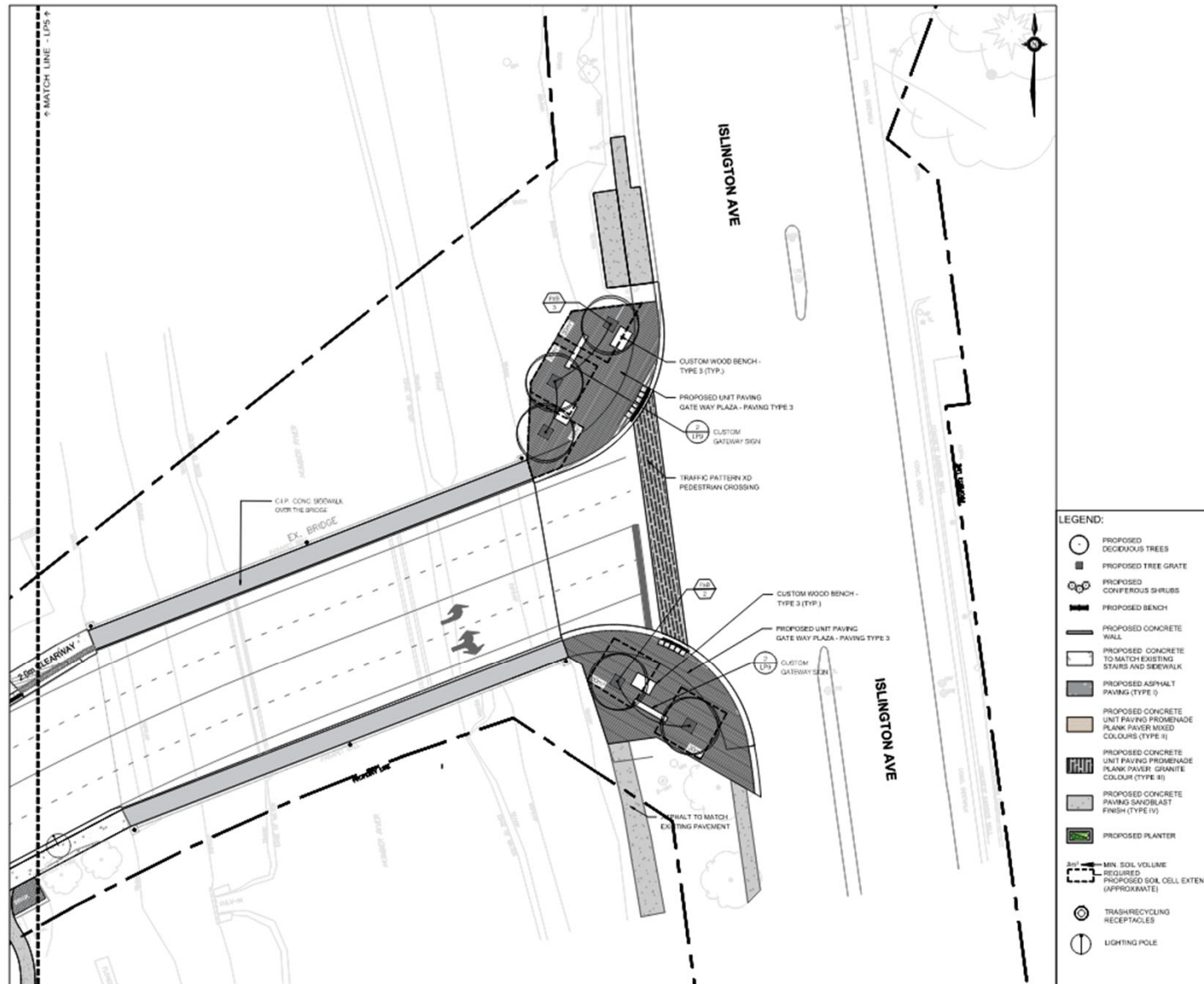
Design Plans



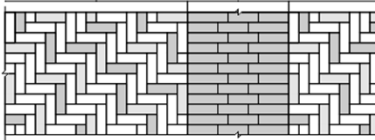
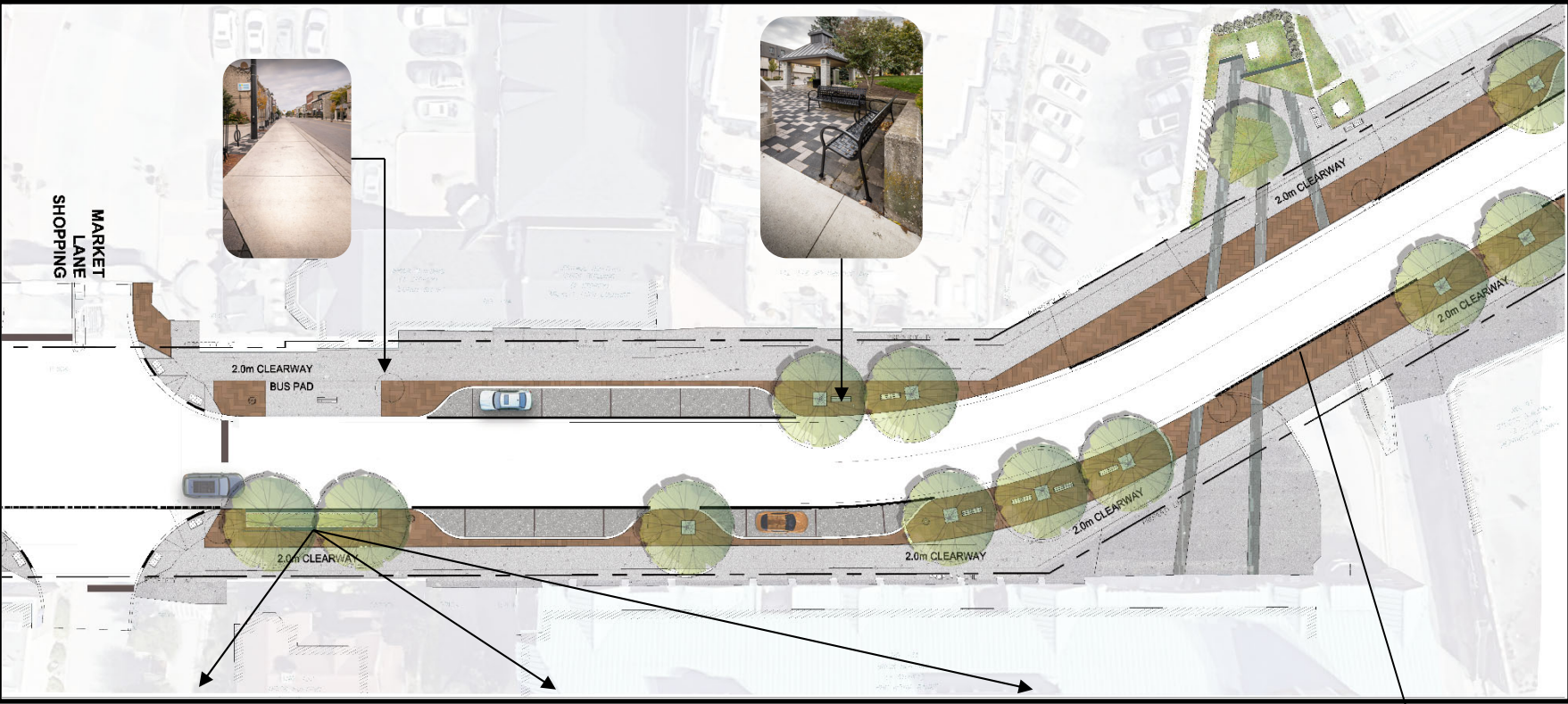
Design Plans



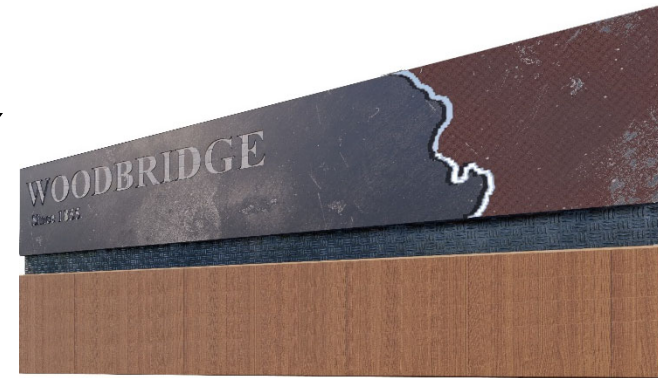
Design Plans



Streetscape Concept



Gateway Concepts



Site Furnishing

