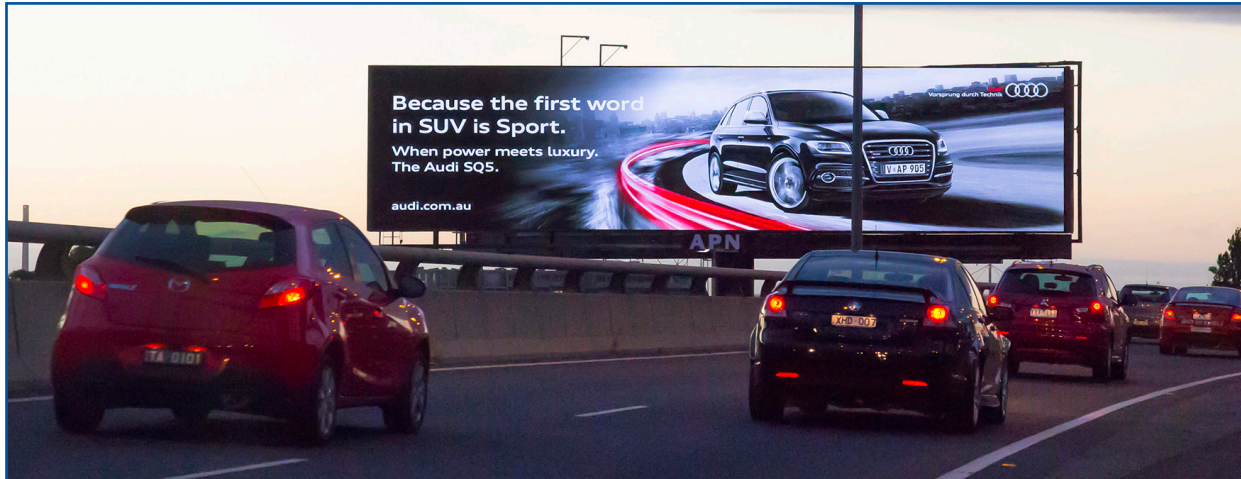


# DB-6400 14'x48' PRODUCT SPECIFICATIONS



**Power Requirements:**

32 Amps

**Brightness\*:**

8,500 nits when shipped;  
5,000 nits at year 10 guarantee

**Service Access:**

Front and rear access-standard

**Environmental Protection:**

Fully-sealed IP-67 module, fully-sealed power supply, and PLR

**LEDs per Pixel:**

3 color matched LEDs: 1 red, 1 green, 1 blue

**Viewing Angle:**

160° H x 70° V

**Compliance Information:**

UL, cUL, UL-Energy Verified,  
IBC 2012, FCC Compliant

**Operating Temperature:**

-30° to +120° F (-34° to +49° C)

**Contrast:**

High-contrast, non-reflective louver design

**Color Capability:**

19 bit - 144 quadrillion

**Light Control Standards:**

Complies with local, federal, and industry light output standards

**Diagnostics:**

Advanced diagnostics checks the following:

- Module and display temperatures
- Display dimming
- Non-visual alerts
- Visual inspection

**Filterless Display:**

Less maintenance, sealed components with increased reliability

**Integrated Control System:**

- Governs hold times
- Limits media to static images

**Display Calibration:**

Factory calibrated individual LEDs

**Display Dimming:**

256 dimming levels

**Snap™ Technology:**

Automatically blend new modules with existing

**Visual Verification:**

- Webcam
- Retractable webcam arm (where applicable)

**SmartLink™:**

Remote control and redundant communication

**Multidirectional Light Sensor System:**

Multi-direction sensing with power-saving algorithms

**Surge Suppression:**

Standard

## DIGITAL BILLBOARD MODEL SPECIFICATIONS

SIZE (INDUSTRY NAMES)	DISPLAY SIZE ACTIVE AREA	OVERALL DISPLAY SIZE	ROWS AND COLUMNS	PIXEL SPACING (MM)	DISPLAY WEIGHT	OPERATING AMPS**	POWER REQUIREMENTS
14' x 48' (Bulletin)	13'2" x 47'3"	13'8" x 47'9"	200 x 720 240 x 864	20 MT 16 MT	6,550 lbs (2,977 kg)	15 amps	64 amps

\*Brightness can be adjusted to meet local regulations.

\*\*Measurements based on content over a 24 hour period.

For precise measurements, request a Daktronics shop and riser drawing.