

THE CITY OF VAUGHAN

BY-LAW

BY-LAW NUMBER 116-2021

A By-law to exempt parts of Plan 65M-4681 from the provisions of Part Lot Control.

WHEREAS the Council of The Corporation of the City of Vaughan deems it appropriate to enact a By-law pursuant to Subsection 50(7) of the *Planning Act* to exempt the lands hereinafter described from the Part Lot Control provisions in Subsection 50(5) of the said Act;

NOW THEREFORE the Council of The Corporation of the City of Vaughan ENACTS AS FOLLOWS:

1. Subsection 50(5) of the *Planning Act* shall not apply to the following lands:

<u>Plan</u>	<u>Description</u>
65M-4681	Block 7

2. Pursuant to Section 50(7.3) of the *Planning Act*, this By-law shall expire upon two (2) years from the date of registration of this By-law, unless it is repealed or extended by Council of The Corporation of The City of Vaughan in accordance with Subsection 50(7.4) of the *Planning Act*, prior to the expiration date herein.
3. This By-law shall take effect upon registration in the appropriate Land Registry Office.
4. Schedule "A" forms part of this By-law.

Enacted by City of Vaughan Council this 27th. day of September, 2021.

Hon. Maurizio Bevilacqua, Mayor

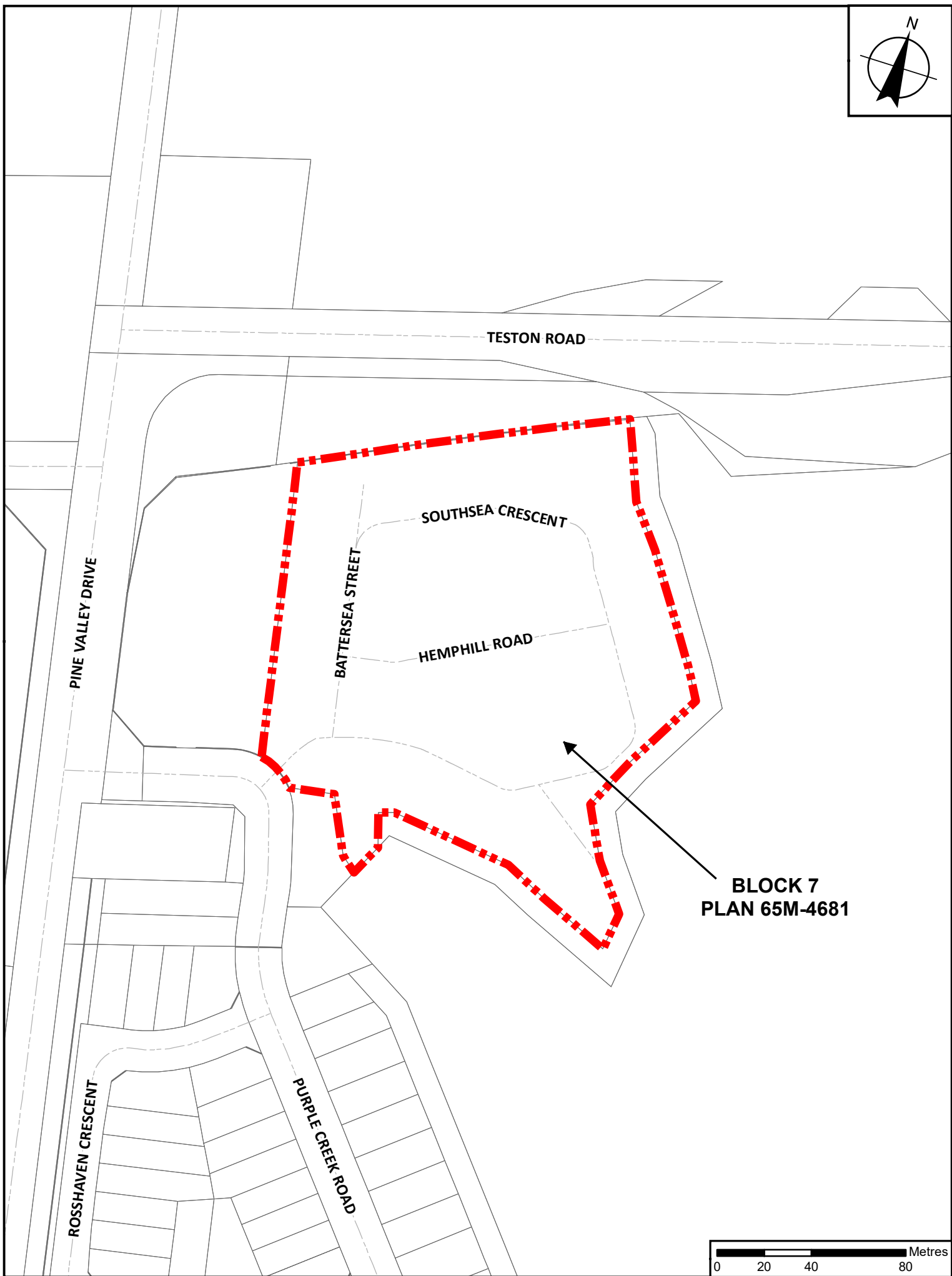
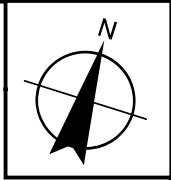
Todd Coles, City Clerk

Authorized by By-law 005-2018 being a By-law
to authorize delegation of approval of certain
administrative matters to Staff.
Adopted by Vaughan City Council on
January 30, 2018.

SCHEDULE "A" TO BY-LAW 116-2021

The lands subject to this By-law are located south east of Pine Valley Drive and south of Teston Road, being Block 7 on Registered Plan 65M-4681, in Part of Lot 25, Concession 6, City of Vaughan.

The purpose of this By-law is to exempt the above-noted lands from the Part Lot Control provisions of the *Planning Act* for the purposes of facilitating maintenance easements and creating sixty-eight (68) lots for townhouse dwelling units.



LOCATION MAP TO BY-LAW 116-2021

FILE: PLC.21.005

LOCATION: Part of Lot 25, Concession 6

APPLICANT: Prima Vista Estates Inc.

CITY OF VAUGHAN



SUBJECT LANDS