

# Attachment 4: Complete Streets Concept Drawing



## LEGEND

- Commercial & Institutional Buildings
- Parks & Golf Clubs
- Key Destinations
- Existing Sidewalk
- Existing Cross Walk
- Recommended Cross Walk
- Community Identified Potential Traffic Calming
- Existing Pedestrian Connection
- Community Identified Potential Pedestrian Connection
- Community Identified Potential Rest Area
- Community Identified Potential Signage & Wayfinding
- Community Identified Potential Art Installation
- Existing Cycling Track
- Recommended Cycling Track
- Recommended Bicycle Repair Station
- Recommended Bicycle Rack
- Existing Street Trees
- Potential Street Trees
- Community Identified Potential Pollinator Garden
- Recommended Stormwater Management (City-Wide Urban Guidelines)
- Thornhill Vaughan Heritage Conservation District
- SPOHT Historical Walking Tour
- Main Walking Tour Routes
- Secondary Walking Tour Routes



# COMPLETE STREETS

Atkinson Avenue . Centre Street . Hilda Avenue

*\* This map represents Recommended actions and projects based on community and stakeholder feedback. Feasibility of implementation and exact locations may vary and are subject to further analysis and refinement.*



## RECOMMENDED IMPROVEMENTS FOR PEDESTRIANS



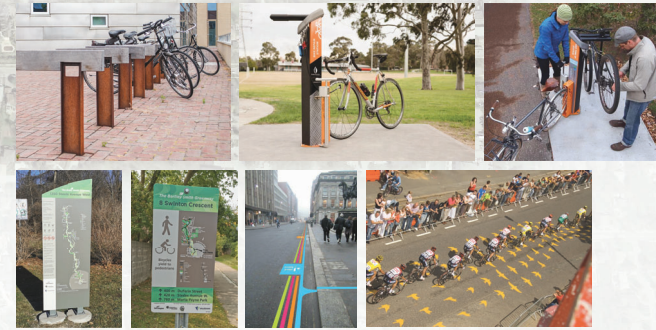
- Implement predictable, consistent infrastructure to help those with disabilities and mobility issues. Consider surface materials to improve traction (e.g. tactile paving/detectable warning surfaces) and to provide a stormwater management function (e.g. permeable surfacing). Recommended site improvement will coordinate with AODA, City of Vaughan's Inclusive Design Standard, and City-wide Urban Design Guidelines.
- Implement more seating, shade (e.g. trees, gazebos, shade canopies) and shelter/weather protection opportunities. Seating and shelter will encourage more people to walk on street, and will create comfortable outdoor space for community interaction. Recommended site improvement will coordinate with City of Vaughan's Inclusive Design Standard, and City-wide Urban Design Guidelines.
- Provide separated facilities for pedestrians and cyclists within the road allowance and consider improving/implementing pedestrian crossing at key locations.



## RECOMMENDED IMPROVEMENTS FOR CYCLISTS



- Provide separated in-boulevard infrastructure for cycling to improve comfort and safety of those riding bikes.
- Ensure adequate street lighting and visibility for bicycle use.
- Consider the year-round implications for cycling infrastructure (e.g. winter snow or low hanging branches)
- Provide ancillary cycling infrastructure to support users based on City-Wide Urban Guidelines. (e.g. bike parking, repair stations, washroom facilities). Recommended locations may vary.
- The pedestrian and cycling networks are coordinated with the transit network as per policies within the Official Plan.
- Provide more instructional/educational signage on how to transport bicycles on public transit.
- Provide more community-wide education and enforcement for rules of the road, including cyclists, e-scooters and e-bikes.



## RECOMMENDED IMPROVEMENTS FOR TRANSIT USERS



- Improve signage at bus stops to clarify route information (e.g. which bus stops at that location) and provide additional signage to direct users to the next bus throughout the neighbourhood.
- Consider addition of wayfinding signage at bus stops to inform users of nearby amenities and to encourage users to explore the neighbourhood.
- Add shade structures/shelters, seating, and safety measures at bus stops and make strategic stops highly visible.
- Continue to advocate for fare coordination between independent transit systems (e.g. TTC, YRT, and VIVA)
- Increase frequency of buses to give riders more options.



## RECOMMENDED IMPROVEMENTS FOR DRIVERS



- Consider implications to drivers sight lines and road conditions for driving (eg. low hanging branches and debris free catch basins to prevent roadway flooding)
- Consider traffic calming measures where appropriate (e.g. narrower lanes, planted gardens and trees in center island, trees with larger canopies). Measures and locations are subject to the City's further analysis.
- Provide more community-wide education and enforcement for rules of the road, including cyclists, e-scooters and e-bikes



## IMPROVEMENTS OF WALKABILITY & ACCESSIBILITY



- Improve connections with GAWCC, neighbouring parks and schools, businesses and residential areas and extend trail network to create continuous walking loops.
- Provide seating and shade structure for resting and more instructional signage on directions and options for walking loops. Implement native shade trees and pollinator gardens and incorporate measures to ensure health and longevity.
- Implement comfortable and beautiful outdoor spaces with stop/rest stations, and areas to encourage community interaction.
- Implement wayfinding & interpretive signage so people are encouraged to explore more of their neighbourhood (e.g. promote destinations, historical heritage, ecological adventures, local services/amenities). The location of recommended wayfinding & interpretive signage responds to community request and follows City-wide Urban Design Guidelines.



## ENVIRONMENTAL FUNCTIONALITY



- Improve biodiversity by planting a diverse selection of native trees and perennials. Native trees provide shade for pedestrians, cyclists, and drivers. Some tree species (e.g. Black Walnut and Catalpa) on the recommended tree list help maintain clean air and some (e.g. Black Willow and Mitten Tree) release chemicals in the air that benefit health and reduce anxiety. Native perennials in the bio-retention swale and pollinator garden contribute to wildlife habitats. Consider to add tree ID tags and brief introduction by community at key locations. Tree and pollinator garden locations are approximate and subject to further analysis from the City of Vaughan.
- Consider using recycled materials, such as recycled plastic and high density paper composite, as seating materials and consider use of natural materials, such as stone and reclaimed ash trees to create seating.
- Improve safety and access through incorporation of measures to reduce flood risk or mitigate associated impacts for street users at key locations on Centre Street (Centre & Atkinson, Centre at SE corner of Oakbank Pond).
- Consider using bio-retention swales, rain gardens, and infiltration trenches along Centre Street to mitigate flood risks by reducing peak flow and upgrade existing grass trench. Recommended locations coordinate with the Green Approach of City-Wide Urban Guidelines.
- Consider promoting environmental education through creative art and signage (e.g. art work could indicate the stormwater process or highlight native plants and pollinators).
- Consider using innovative energy for shade structure, signage, and lighting, such as solar panels and vertical wind turbines.



### RECOMMENDED TREE LIST

Burr Oak	Catalpa
Swamp White Oak	Hackberry
Red Oak	Tulip Tree
Black Walnut	Hop Hornbeam
Black Willow	Mitten Tree
American linden	

# COMPLETE STREETS

Atkinson Avenue . Centre Street . Hilda Avenue