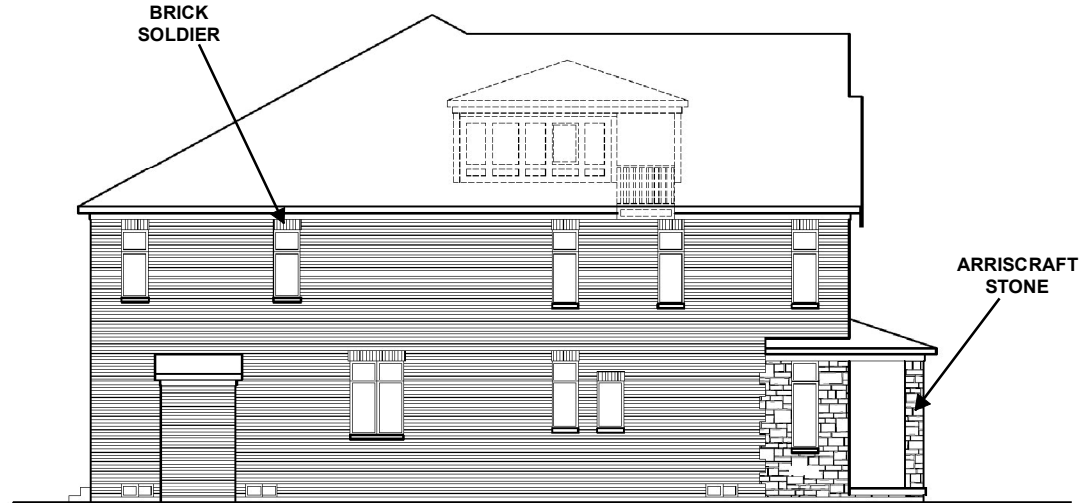




**FRONT ELEVATION - FACING INTERIOR ROAD**



**LEFT SIDE ELEVATION**



**RIGHT SIDE ELEVATION**



**REAR ELEVATION**

Not to Scale

## Typical Building Elevations Facing Private Road (Units 1-3, 9-13)

**LOCATION:** Part of Lot 24, Concession 8; 357, 365, and 375 Stegman's Mill Road

**APPLICANT:** Kleinburg Village Development Corp.



## Attachment

**FILES:** Z.21.020, 19T-21V005  
**RELATED FILES:** DA.21.023, 19CDM-21V003

**DATE:** September 14, 2021

# 6