

**SOUTH ELEVATION
(FACING STEELES AVENUE WEST)**

**25-STOREY
RESIDENTIAL**

**25-STOREY
RESIDENTIAL**

TERRACE @
LEVEL 23

TERRACE @
LEVEL 12

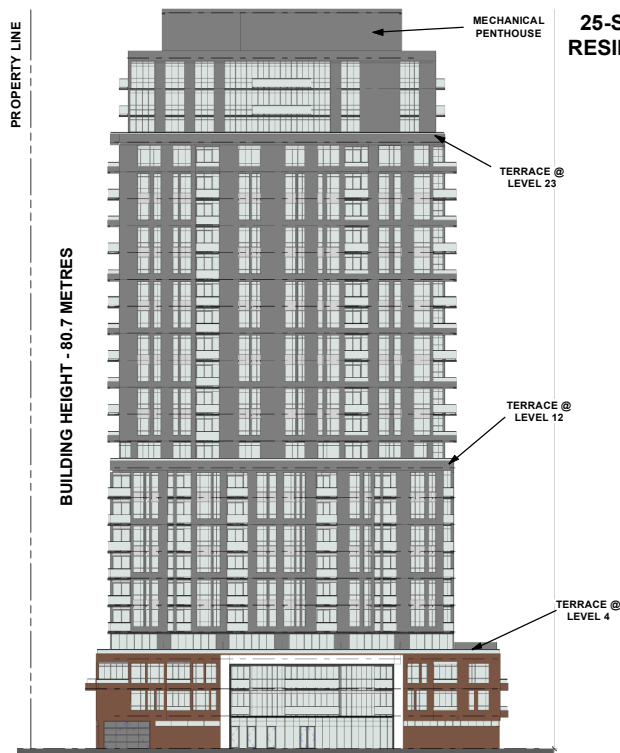
TERRACE @
LEVEL 4

MECHANICAL PENTHOUSE

BUILDING HEIGHT - 80.7 METRES

BUILDING HEIGHT - 80.7 METRES

WEST ELEVATION



NORTH ELEVATION

**25-STOREY
RESIDENTIAL**

**25-STOREY
RESIDENTIAL**

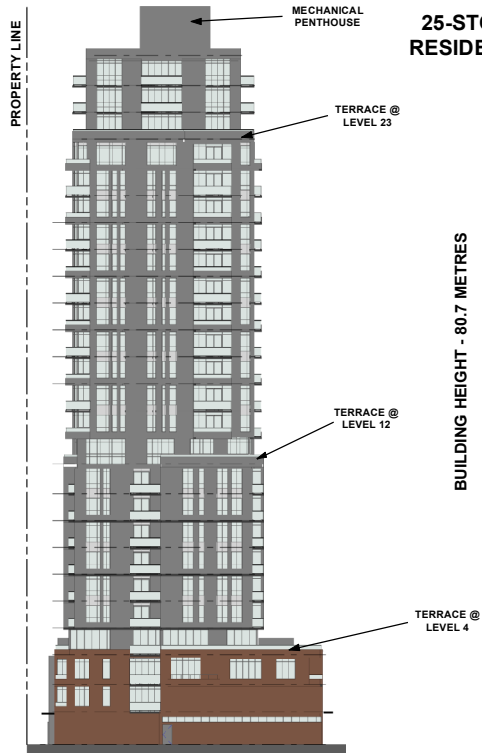
TERRACE @
LEVEL 23

TERRACE @
LEVEL 12

TERRACE @
LEVEL 4

MECHANICAL PENTHOUSE

BUILDING HEIGHT - 80.7 METRES



EAST ELEVATION

TERRACE @
LEVEL 23

TERRACE @
LEVEL 12

TERRACE @
LEVEL 4

MECHANICAL PENTHOUSE

BUILDING HEIGHT - 80.7 METRES

Not to Scale

Building Elevations - Building A

LOCATION:
5390 Steeles Avenue West
Part of Lot 1, Concession 8

APPLICANT:
Woodbridge Park Ltd.



Attachment

FILES:
OP.21.012 and Z.21.019
RELATED FILES: OP.14.003,
Z.14.024, 19T-16V005
DATE: September 14, 2021

4