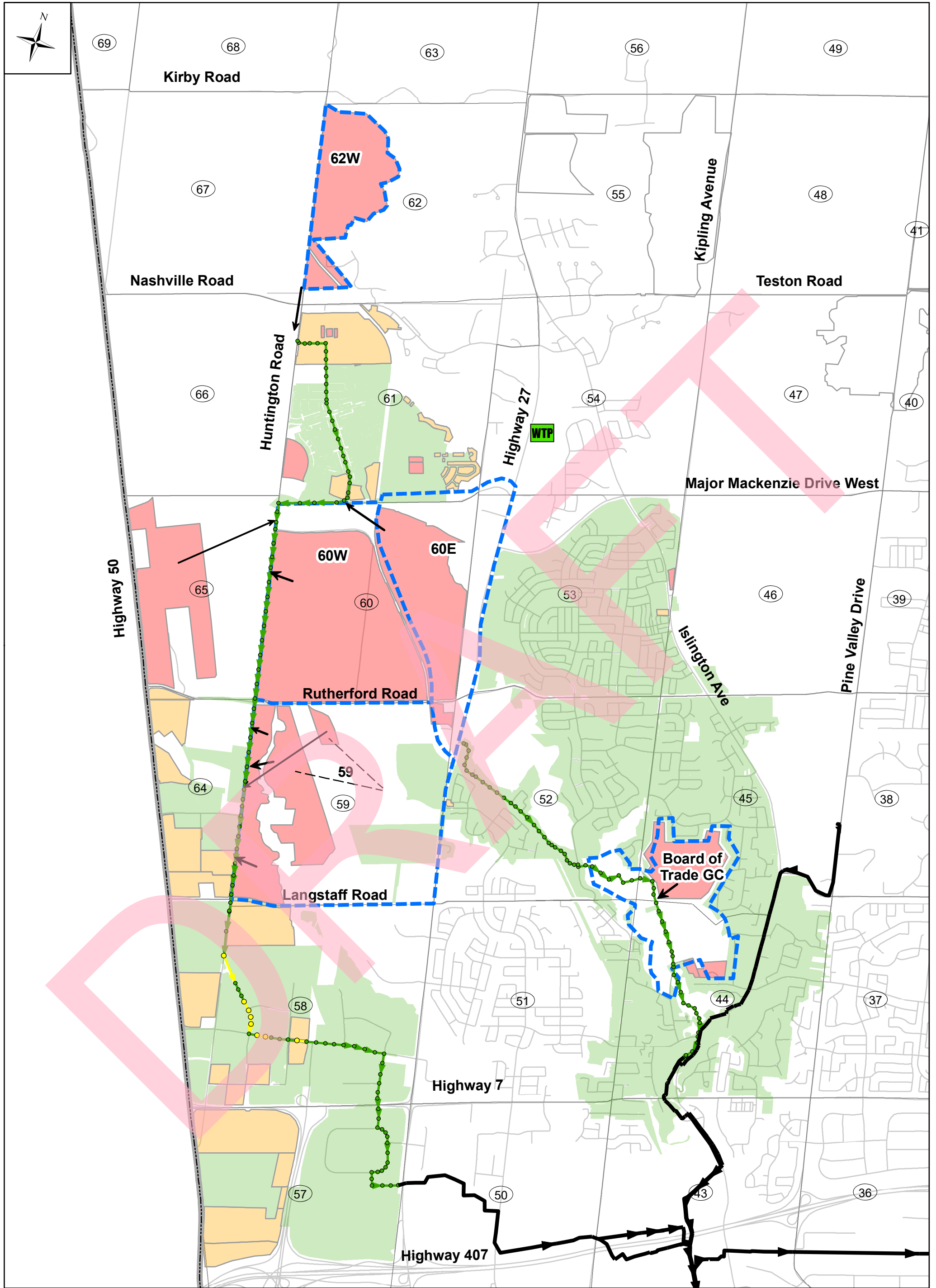


City of Vaughan  
Interim Servicing Strategy  
April 20, 2020



**Table 8-1. Proposed Risk Management Measures**

Study Area	Risk Management Measures						
	Flow Monitoring	SIP	CCTV	I&I Reduction	Phasing	Flow Attenuation	Pipe Replacement
<b>West Vaughan</b>							
Block 62W	Yes	Yes	Yes	Yes	Yes	No	No
Block 60E	Yes	Yes	Yes	Yes	Yes	No	No
Block 60W	Yes	Yes	Yes	Yes	Yes	No	No
Gemini	Yes	Yes	Yes	Yes	Yes	No	No
Block 59E	Yes	Yes	Yes	Yes	Yes	No	No
Block 59W	Yes	Yes	Yes	Yes	Yes	No	No
Board of Trade GC (North)	Yes	Yes	Yes	Yes	Yes	No	No
Board of Trade GC (South)	Yes	Yes	Yes	Yes	Yes	No	No
<b>Northeast Vaughan</b>							
Block 41	Yes	Yes	Yes	Yes	Yes	No	No
Block 34E	Yes	Yes	Yes	Yes	Yes	Yes	Yes
Block 34W	Yes	Yes	Yes	Yes	Yes	No	No
Block 27	Yes	Yes	Yes	Yes	Yes	Yes	Yes
Block 13N	Yes	Yes	Yes	TBD	Yes	TBD	TBD
<b>Promenade</b>							
Promenade	Yes	Yes	Yes	Yes	Yes	No	No
<b>Kleinburg</b>							
Kirby & Copper Creek	Yes	Yes	Yes	Yes	Yes	Yes	No



**Legend**

**Sanitary Manholes:**

- Surcharge (Freeboard ≤ 1.8 m)
- Surcharge (1.8 m < Freeboard ≤ 2.8 m)
- Surcharge (Freeboard > 2.8 m)
- No Surcharge

**Sanitary Sewers:**

- Surcharge (Freeboard ≤ 1.8 m)
- Surcharge (1.8 m < Freeboard ≤ 2.8 m)
- Surcharge (Freeboard > 2.8 m)
- No Surcharge

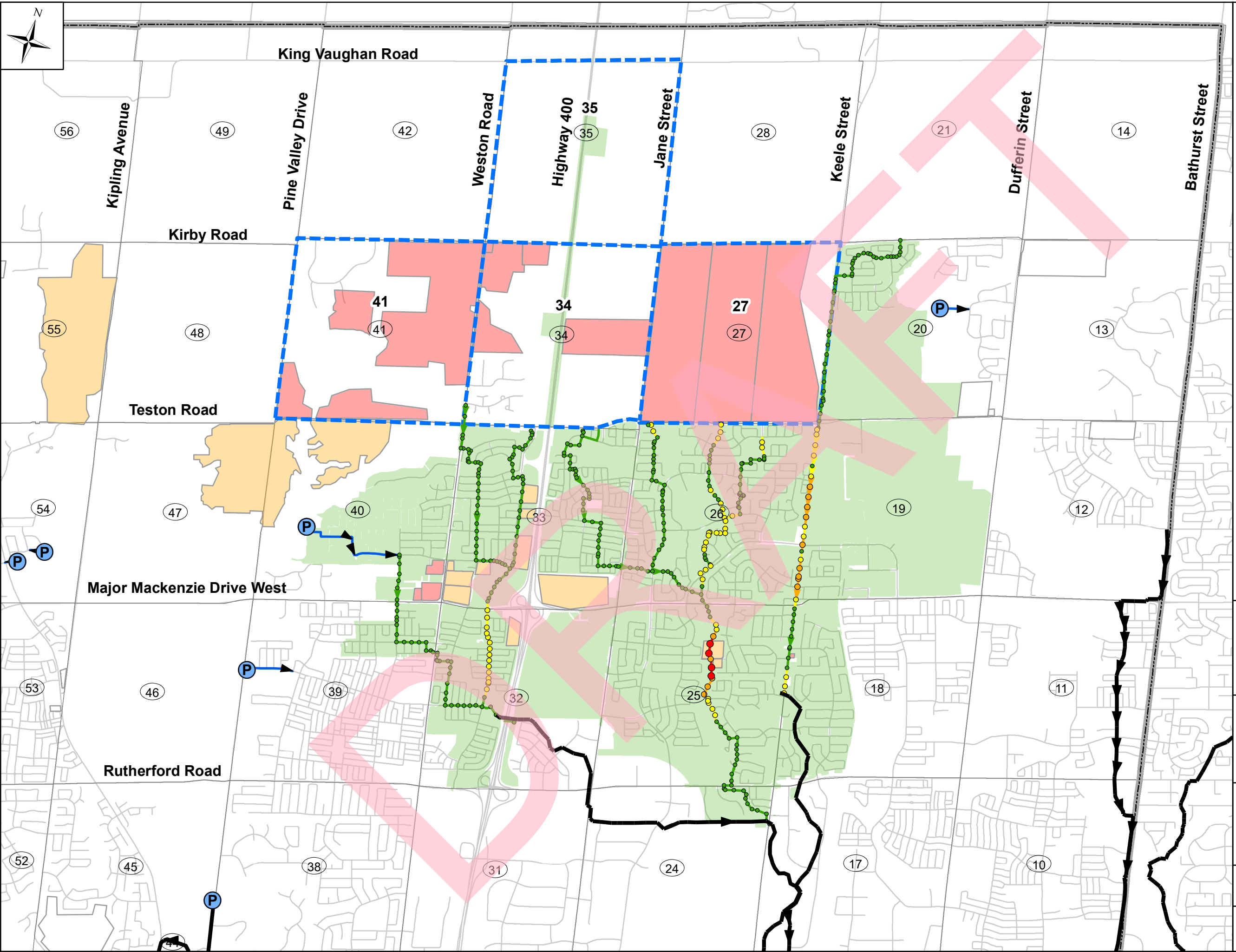
**YDSS**

- Existing Developments
- Approved Developments
- Future Developments
- ISS Study Areas
- Block Number

**Figure 6-3:  
West Vaughan  
Future Condition**

Drawn By: J.H. Date: April 16, 2020

0 250 500 1,000 Meters



**Legend**

- Pumping Stations
- YDSS
- Forcemains
- Existing Developments
- Approved Developments
- Future Developments
- Study Areas
- Municipal Boundary
- Block Number

**Sanitary Manholes:**

- Surcharge (Freeboard ≤ 1.8 m)
- Surcharge (1.8m < Freeboard ≤ 2.8 m)
- Surcharge (Freeboard > 2.8 m)
- No Surcharge

**Sanitary Sewers:**

- Surcharge (Freeboard ≤ 1.8 m)
- Surcharge (1.8m < Freeboard ≤ 2.8m)
- Surcharge (Freeboard > 2.8 m)
- No Surcharge

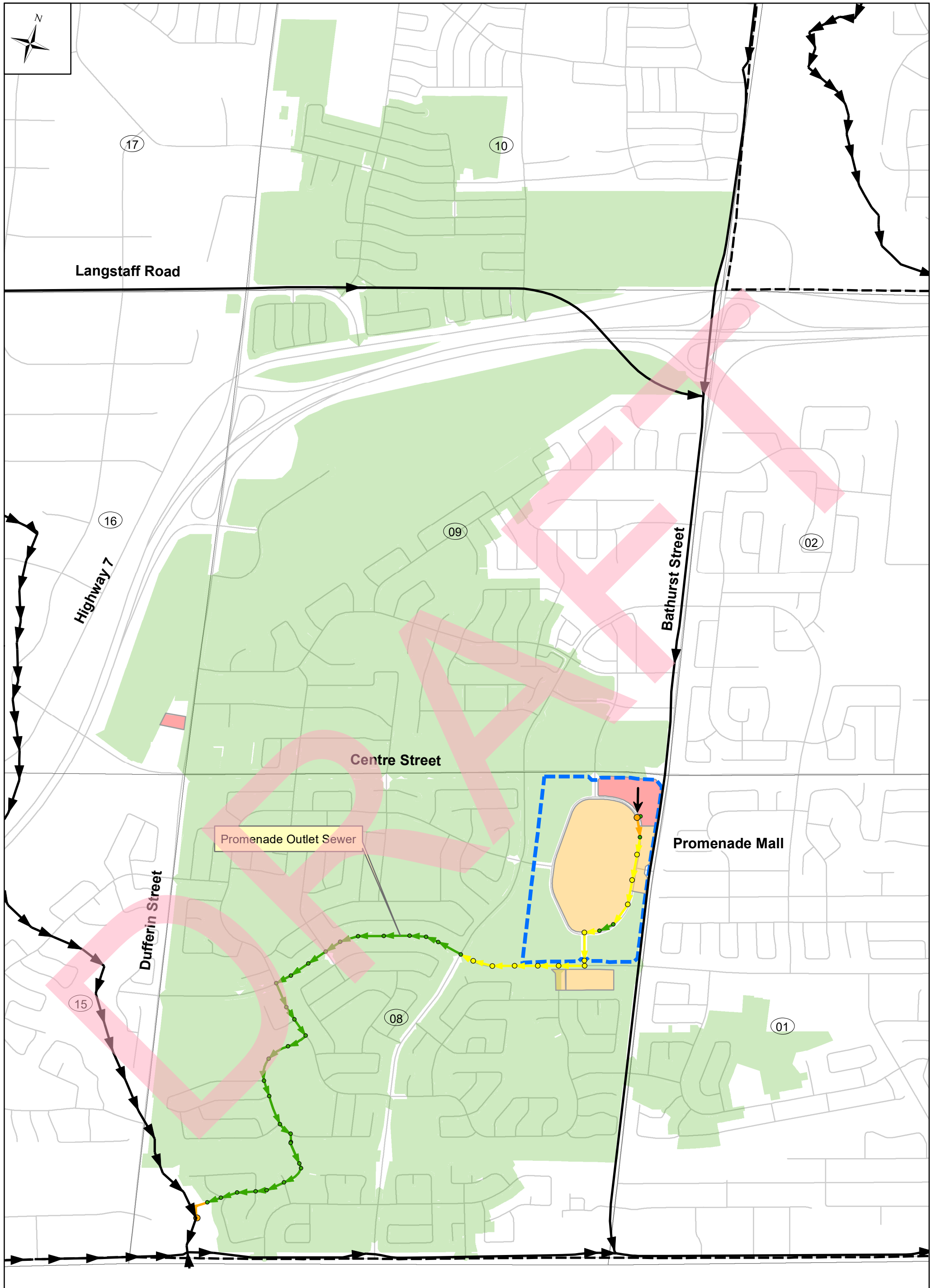
**VAUGHAN** **CIVICA**  
Water Management Solutions

**VAU19-0016 - ISS Study for Vaughan's New Community**

**Figure 6-6:  
Northeast Vaughan  
Future Condition**

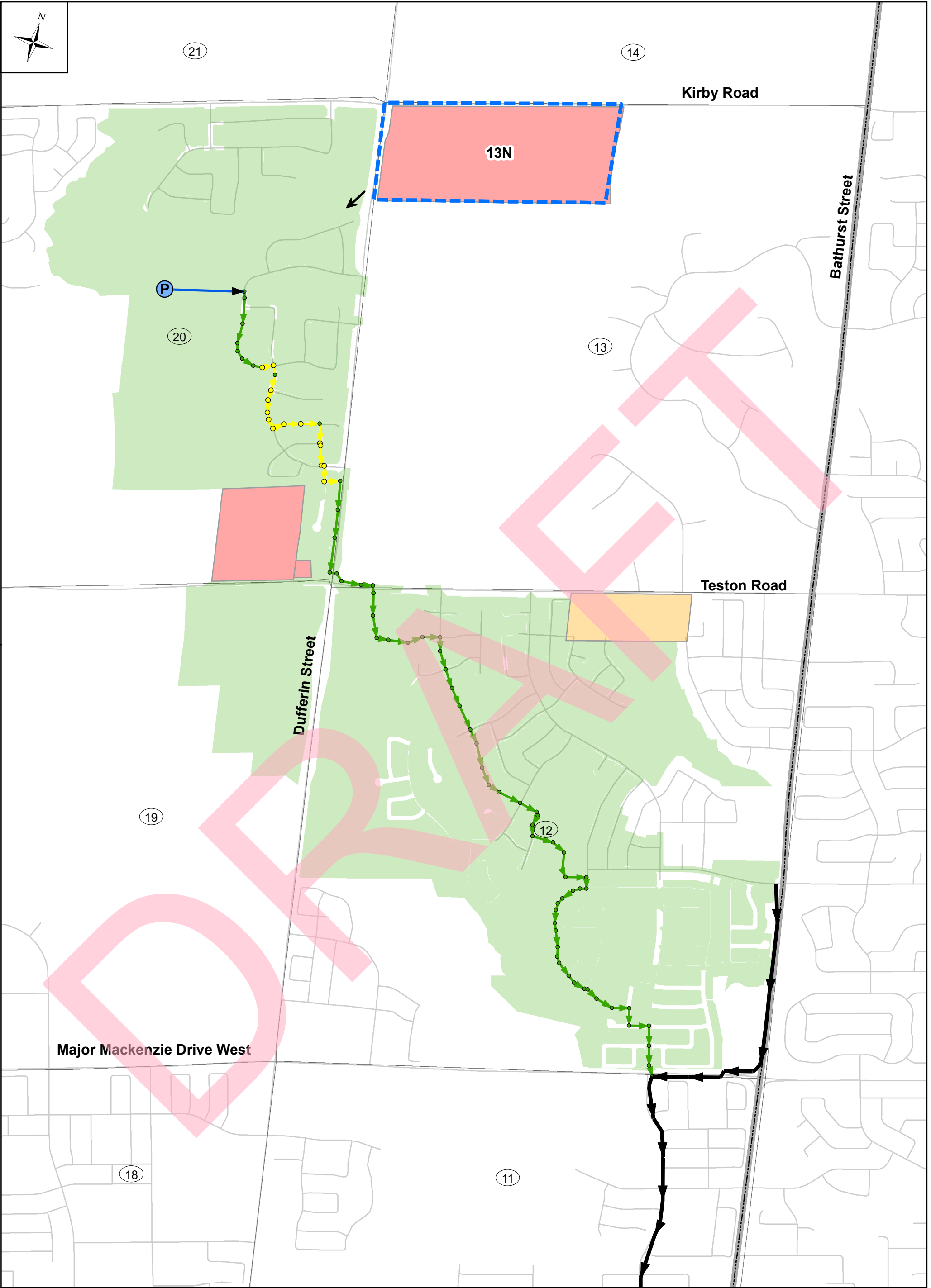
Drawn By: J.H.    Date: April 16, 2020





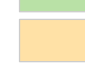


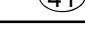
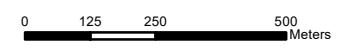
0    500    1,000    2,000 Meters



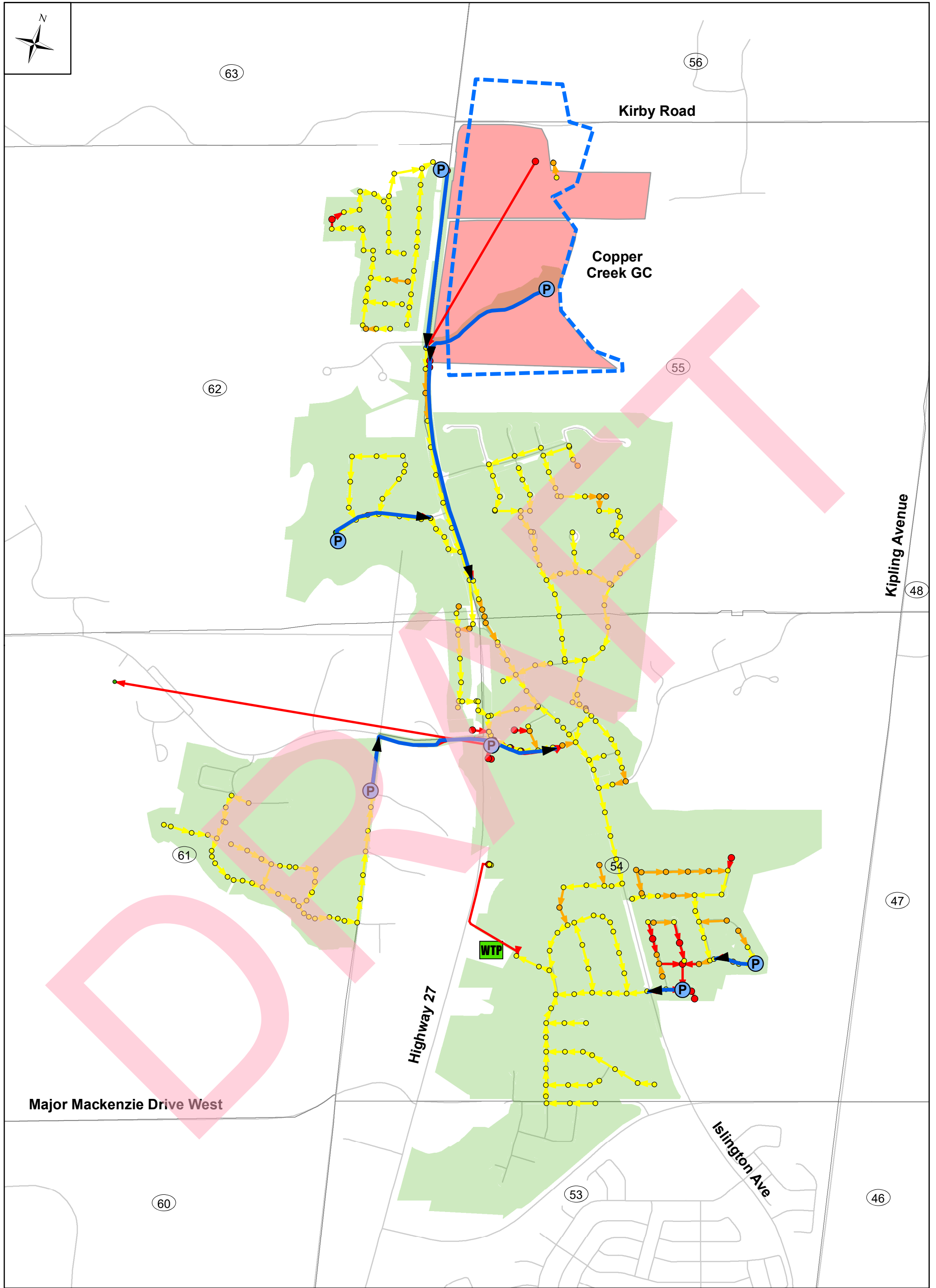
<div></div> <div>VAU19-0016 - ISS Study for Vaughan's New Community Areas</div>	<div><b>Legend</b></div> <div><b>Sanitary Manholes:</b><ul style="list-style-type: none"><li>Surcharge (Freeboard≤1.8 m)</li><li>Surcharge (1.8m&lt;Freeboard≤2.8 m)</li><li>Surcharge (Freeboard&gt;2.8 m)</li><li>No Surcharge</li></ul></div> <div><b>Sanitary Sewers:</b><ul style="list-style-type: none"><li>Surcharge (Freeboard≤1.8 m)</li><li>Surcharge (1.8m&lt;Freeboard≤2.8m)</li><li>Surcharge (Freeboard&gt;2.8 m)</li><li>No Surcharge</li></ul></div> <div><ul style="list-style-type: none"><li>YDSS</li><li>Existing Developments</li><li>Approved Developments</li><li>Future Developments</li><li>ISS Study Areas</li><li>Block Number</li></ul></div>	<div><b>Figure 6-9: Promenade Future Condition</b></div> <div>Drawn By: J.H.     Date: April 16, 2020</div> <div></div>
---	--	---





 	<b>Legend</b> <b>Sanitary Manholes:</b> <ul style="list-style-type: none"><li>Surcharge (Freeboard ≤ 1.8 m)</li><li>Surcharge (1.8 m &lt; Freeboard ≤ 2.8 m)</li><li>Surcharge (Freeboard &gt; 2.8 m)</li><li>No Surcharge</li></ul> <b>Sanitary Sewers:</b> <ul style="list-style-type: none"><li>Surcharge (Freeboard ≤ 1.8 m)</li><li>Surcharge (1.8 m &lt; Freeboard ≤ 2.8 m)</li><li>Surcharge (Freeboard &gt; 2.8 m)</li><li>No Surcharge</li></ul>	 Pumping Stations  Force mains  YDSS  Existing Developments  Approved Developments  Future Developments  ISS Study Areas  Block Number	<b>Figure 6-12: Block 13N Future Condition</b>  Drawn By: J.H.    Date: April 16, 2020  
--	--	---	---

**VAU19-0016 -  
ISS Study for Vaughan's  
New Community Areas**



**Legend**

**Sanitary Manholes:**

- Surcharge (Freeboard ≤ 1.8 m)
- Surcharge (1.8 m < Freeboard ≤ 2.8 m)
- Surcharge (Freeboard > 2.8 m)
- No Surcharge

**Sanitary Sewers:**

- Surcharge (Freeboard ≤ 1.8 m)
- Surcharge (1.8 m < Freeboard ≤ 2.8 m)
- Surcharge (Freeboard > 2.8 m)
- No Surcharge

- Existing Developments
- Approved Developments
- Future Developments
- ISS Study Areas
- Block Number

**Figure 6-15:  
Kirby Phase II**

Drawn By: J.H. Date: April 16, 2020

0 100 200 400 Meters