

THE CITY OF VAUGHAN

BY-LAW

BY-LAW NUMBER 131-2020

A By-law to dedicate certain lands as part of the public highway.

WHEREAS Section 31(2) of *the Municipal Act, 2001*, S.O. 2001, c.25 confers that land may only become a highway by virtue of a by-law establishing the highway and not by the activities of the municipality or any other person in relation to the land.

NOW THEREFORE the Council of The Corporation of the City of Vaughan ENACTS AS FOLLOWS:

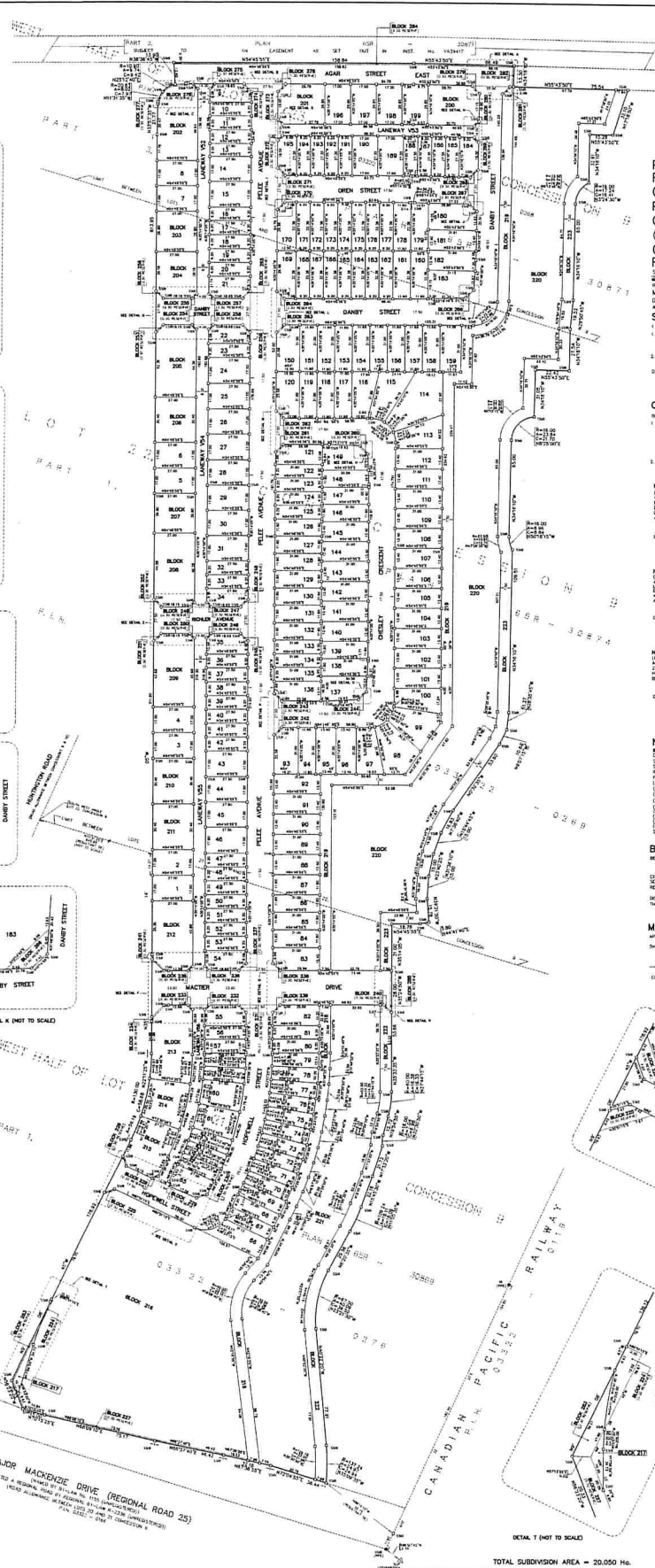
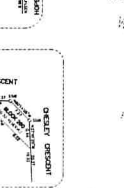
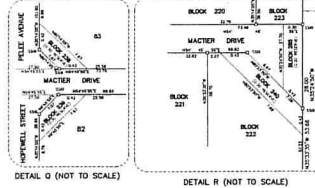
1. THAT the lands which are situate in the City of Vaughan, in the Regional Municipality of York, being Block 313 on Plan 65M-4373, registered in the Land Registry Office for the Land Titles Division of York Region (No.65) are hereby dedicated as part of the public highway known as “East’s Corners Boulevard”.
2. THAT the lands which are situate in the City of Vaughan, in the Regional Municipality of York, being Block 314 on Plan 65M-4373, registered in the Land Registry Office for the Land Titles Division of York Region (No.65); are hereby dedicated as part of the public highway known as “Barons Street”.
3. THAT the lands which are situate in the City of Vaughan, in the Regional Municipality of York, being Block 285 on Plan 65M-4374, registered in the Land Registry Office for the Land Titles Division of York Region (No.65) are hereby dedicated as part of the public highway known as “Mactier Drive”.

Enacted by City of Vaughan Council this 21st day of October, 2020.

Hon. Maurizio Bevilacqua, Mayor

Todd Coles, City Clerk

Authorized by By-law 005-2018 being a By-law
to authorize delegation of approval of certain
administrative matters to Staff.
Adopted by Vaughan City Council on
January 30, 2018.



epe RADY-PENTEX & EDWARD SURVEYING LTD
 DISTRICT LAND SURVEYORS
 643 Chisholm Road, Suite 1
 Woodbridge, Ontario L4L 8A3
 Tel: (416) 935-5000 Fax: (416) 935-5001
 Tel: (905) 264-0881 Fax: (905) 264-2099
 Website: www.epe.ca
 DRAWING: P44/D/7/CD.S
 JOB NO. 12-047 CHECKED: C.P.E.
 AS-13-2010-08 CAD FILE NO. 12047X3C
 AUGUST 2010 - 4/12/10
 PHASE 1A (EAST)
 Date: 12/20/2012 10:29:41

rpe RADY-PENTEX & EDWARD SURVEYING LTD.
ONTARIO LAND SURVEYORS
643 Cheshire Road, Suite 7
Woodbridge, Ontario L4B 3A3
Tel (416) 735-5000 Fax (416) 735-5001
Tel (905) 264-0281 Fax (905) 264-2099
WebSite: www.rpe.ca
DISBURSE: P.M./O.T./C.D.S. CHECKED: C.P.E.
JOB No. 12-047 CAD FILE No. 12047.e3c
APR 13 2012 10:46 AM
APR 13 2012 4:47:23
PHASE 1A (EAST)
May 12 2012 10:29:41