



C18  
Communication  
CW (WS) – June 2, 2021  
Item(s) # - 2

Infrastructure Planning & Corporate Asset Management

# Asset Management Plans | Core Assets

June 2, 2021



# Agenda

---

**Purpose: Present an overview of the Asset Management Plans (Core Assets) for Council endorsement.**

1. Ontario Regulation 588/17
2. Asset Management Plans – Approach
3. Asset Management Plans – Levels of Service
4. Asset Management Plans – Funding Needs Analysis



Once endorsed, the AMPs will be posted to the City's website as required by O. Reg. 588/17.



# Core Assets

---

## Water



## Stormwater



## Wastewater



## Roads & Bridges



# Strategic Alignment

---

Good Governance

Financial Stewardship  
& Sustainability

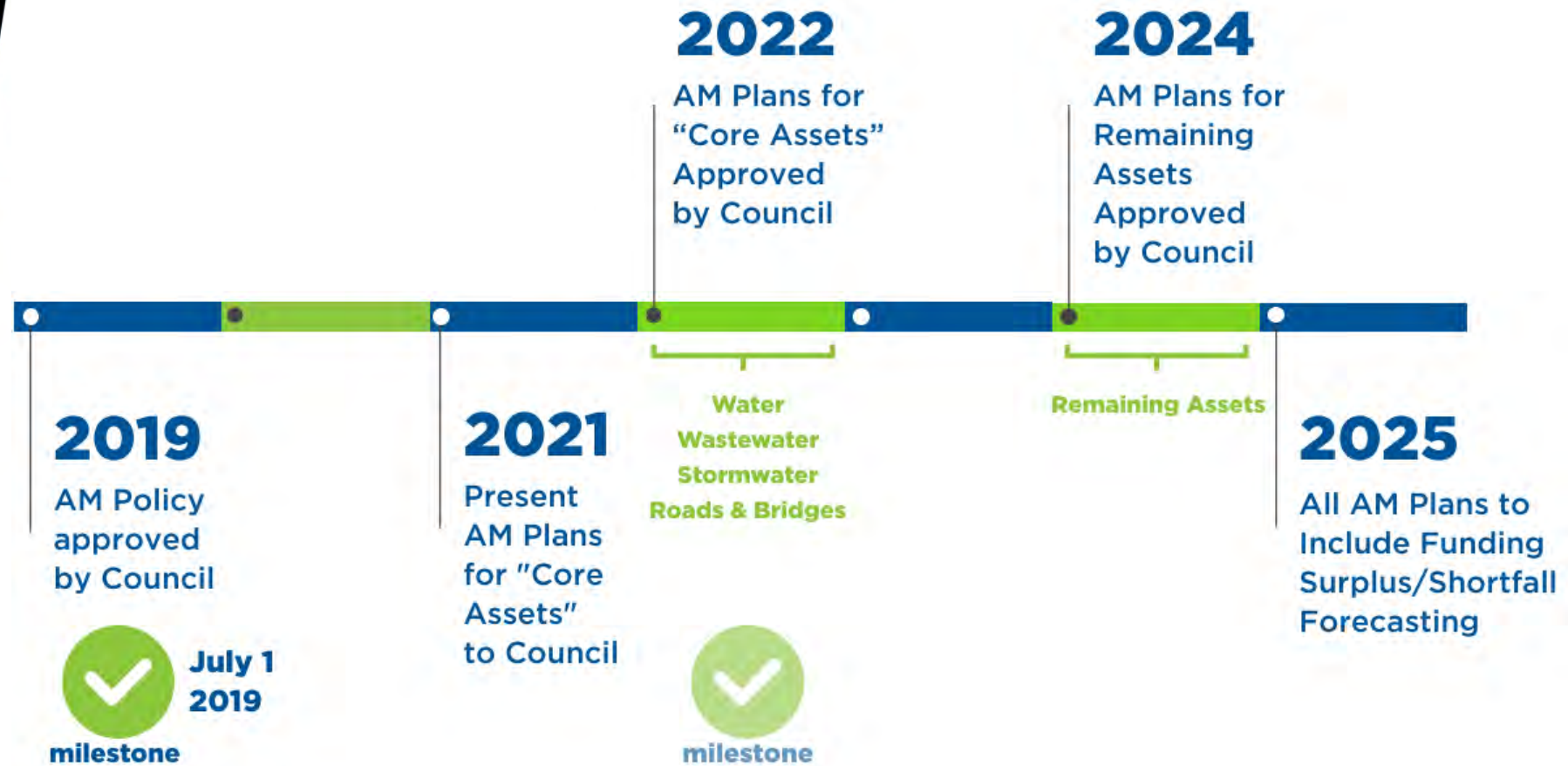




# 1. Ontario Regulation 588/17



# Ontario Regulation 588/17: AM Milestone Dates

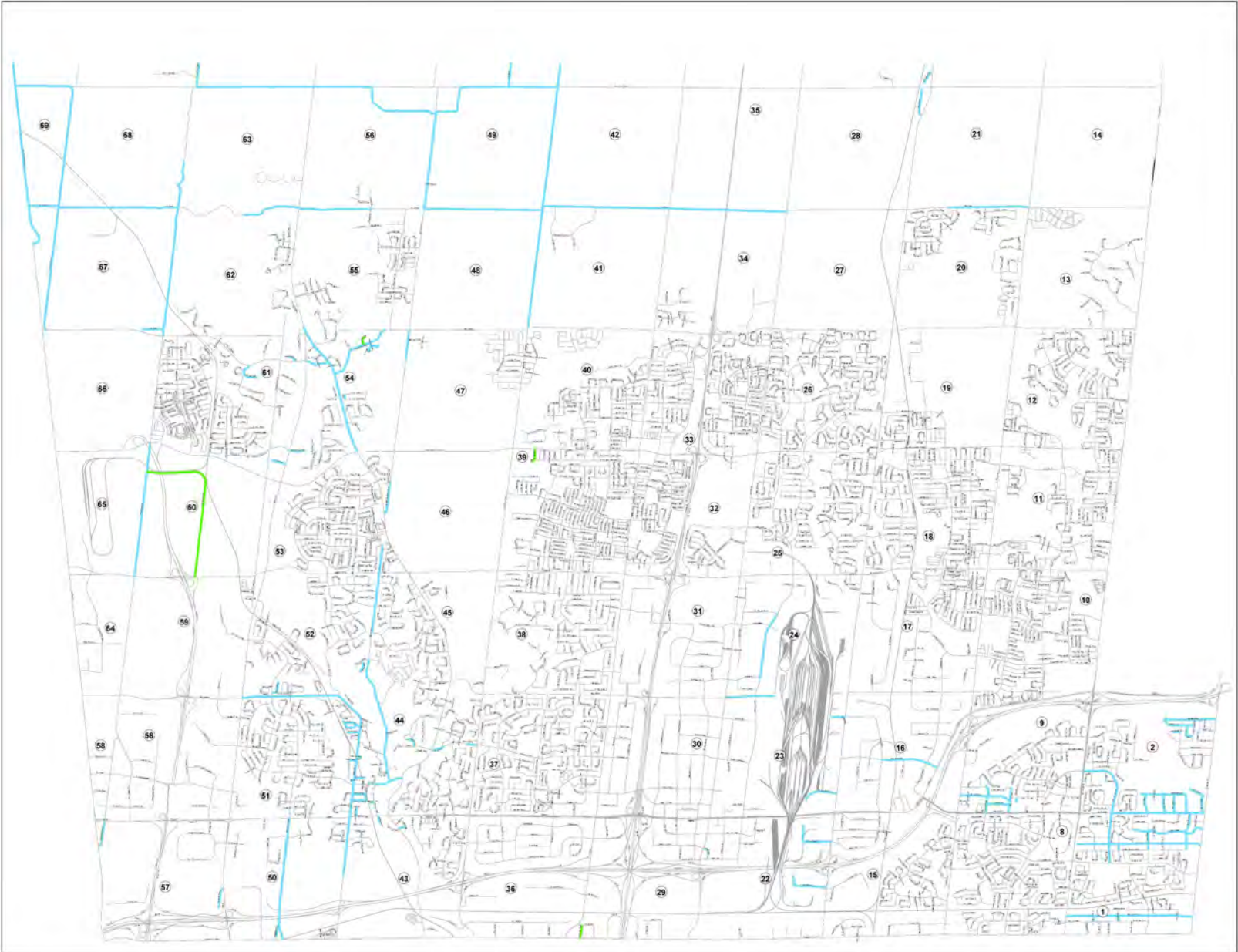




## 2. Asset Management Plans Approach



# City of Vaughan: Development By Decade



1900 - 1959  
1960 - 1969

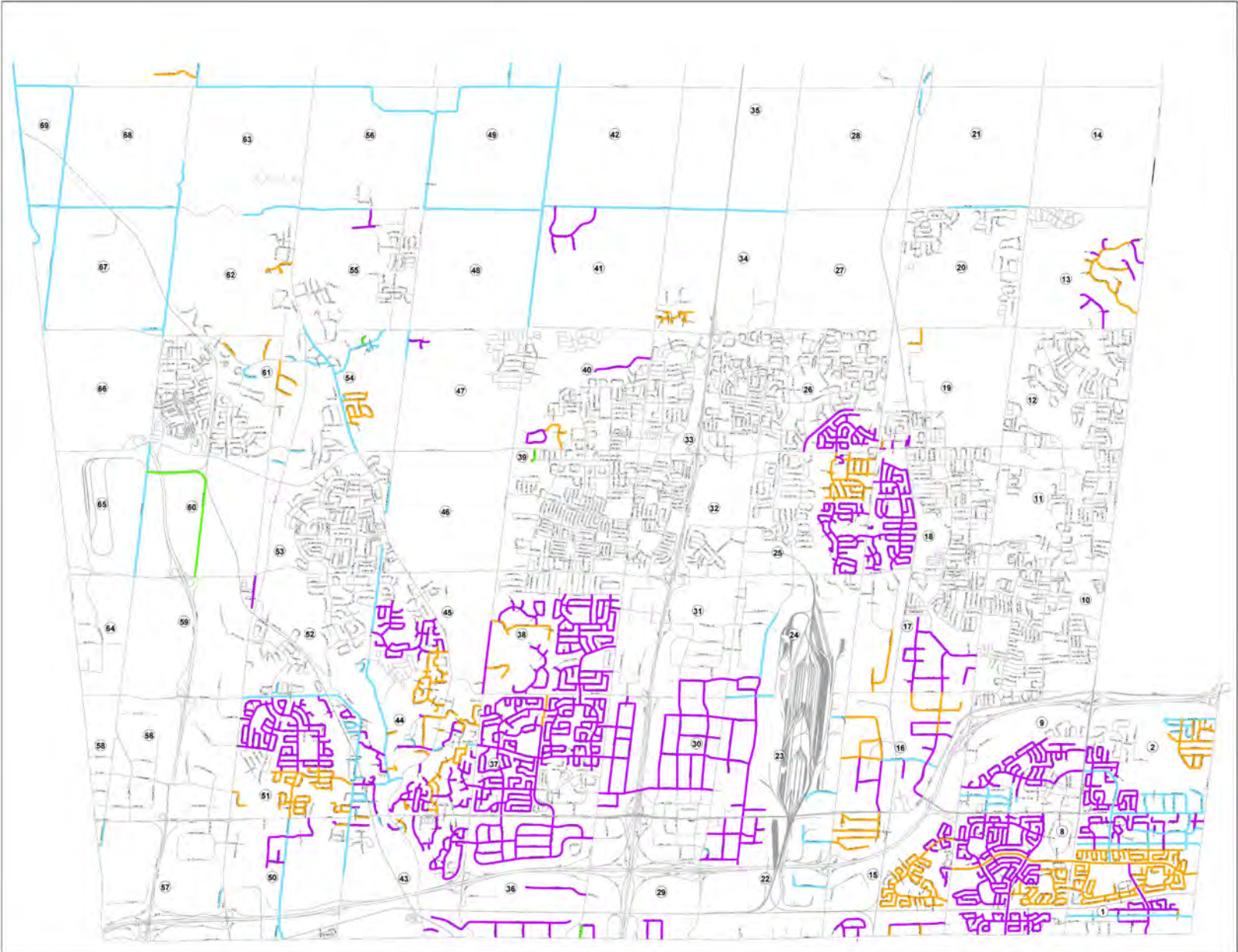


# City of Vaughan: Development By Decade



- 1900 - 1959
- 1960 - 1969
- 1970 - 1979

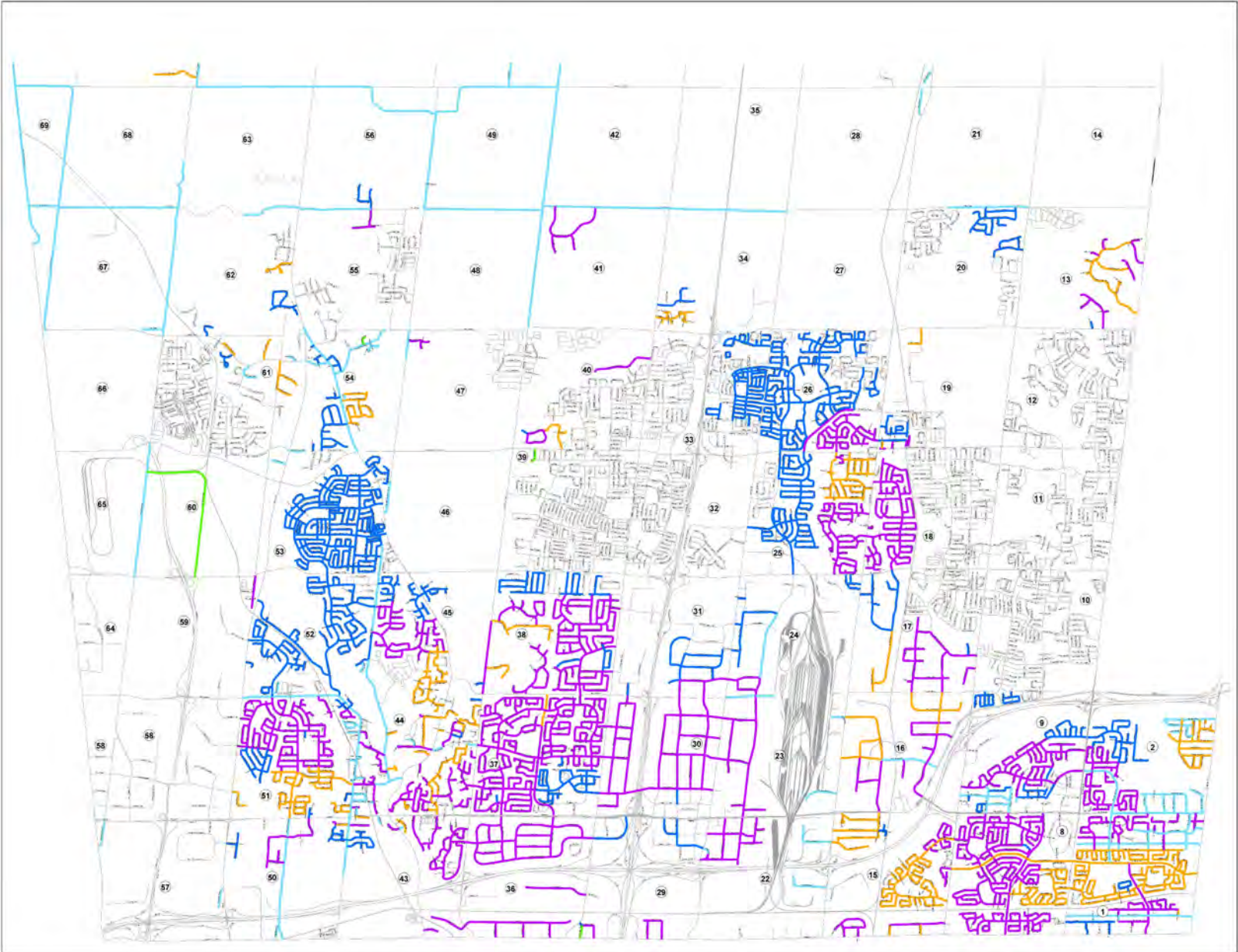
# City of Vaughan: Development By Decade



- 1900 - 1959
- 1960 - 1969
- 1970 - 1979
- 1980 - 1989



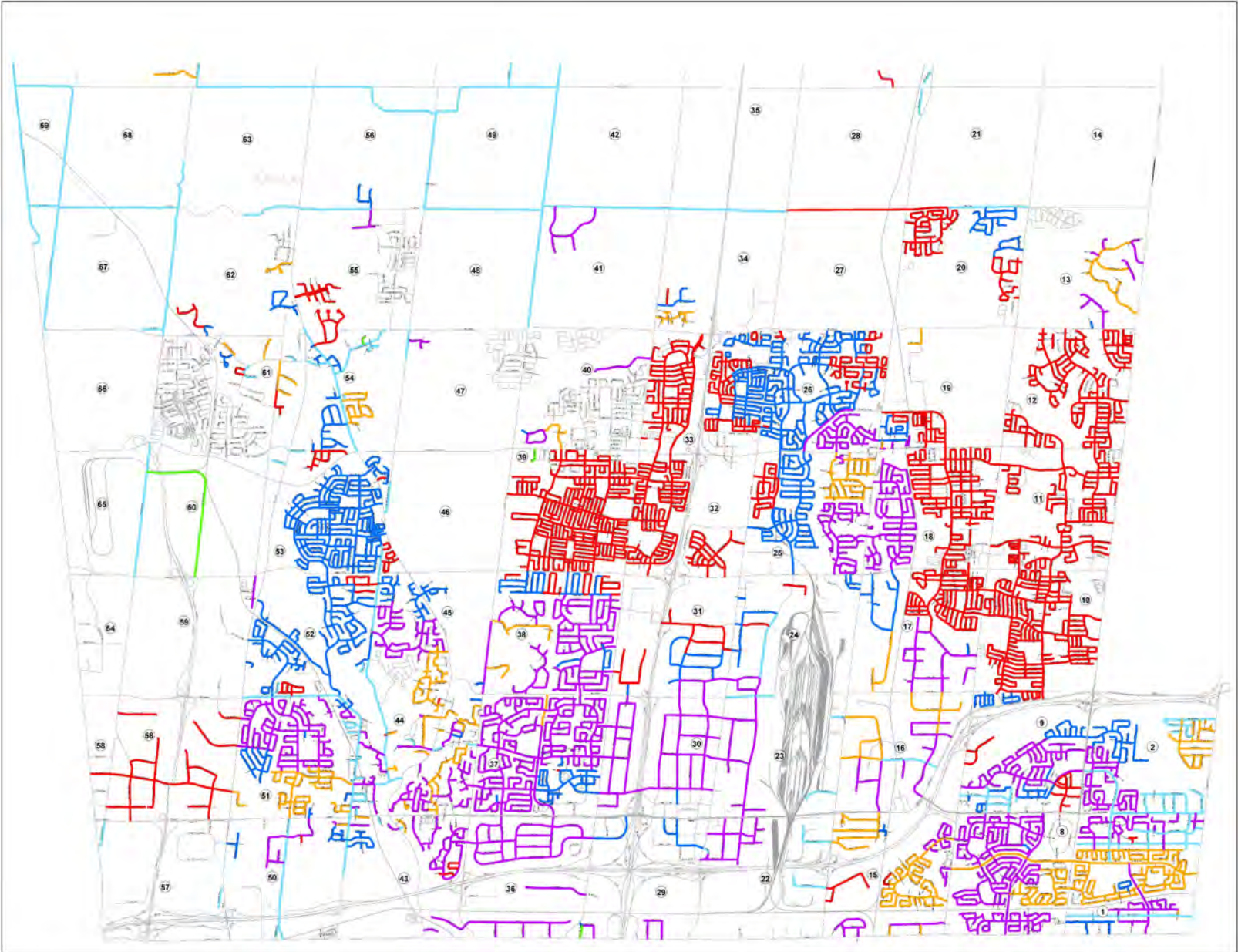
# City of Vaughan: Development By Decade



- 1900 - 1959
- 1960 - 1969
- 1970 - 1979
- 1980 - 1989
- 1990 - 1999



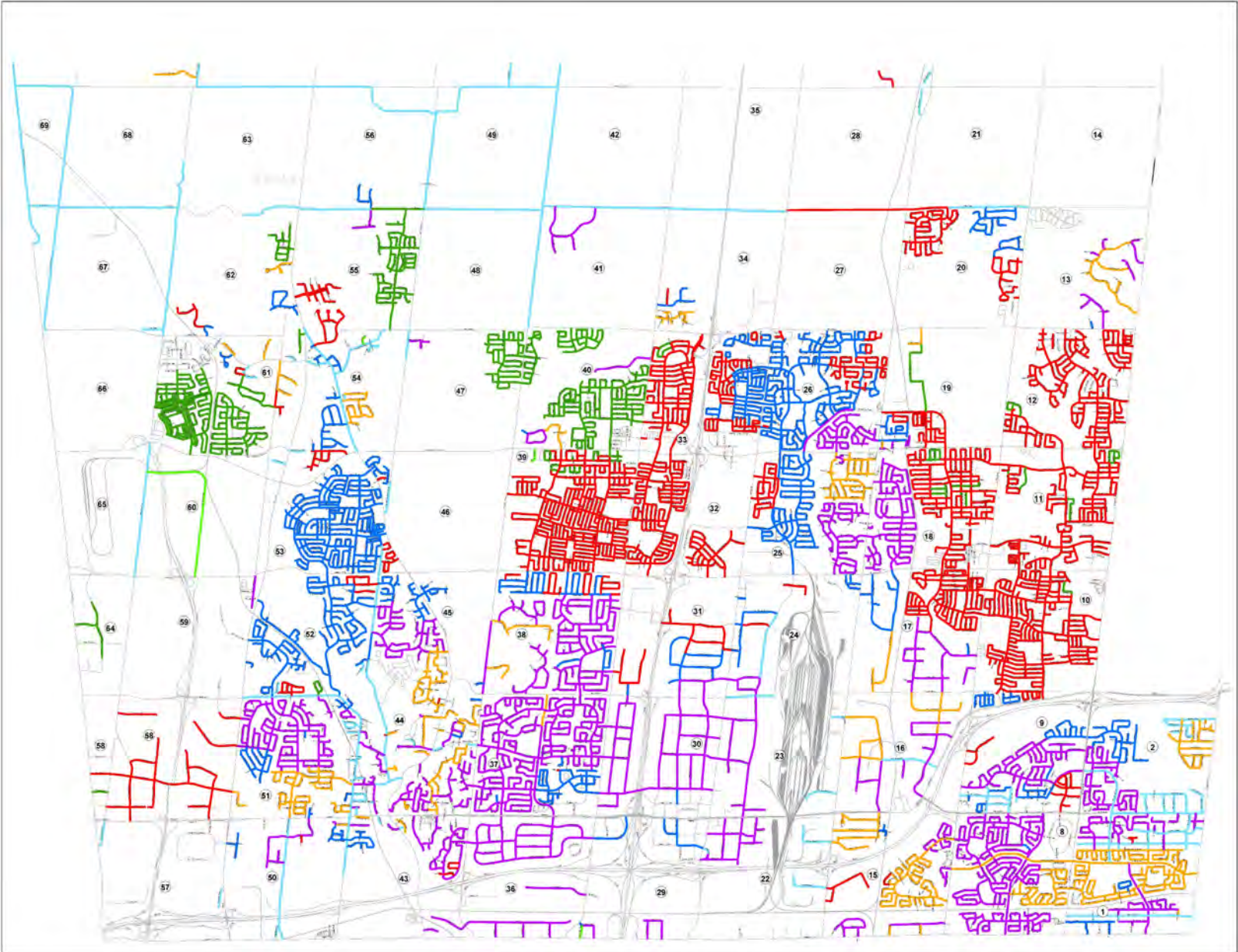
# City of Vaughan: Development By Decade



- 1900 - 1959
- 1960 - 1969
- 1970 - 1979
- 1980 - 1989
- 1990 - 1999
- 2000 - 2009



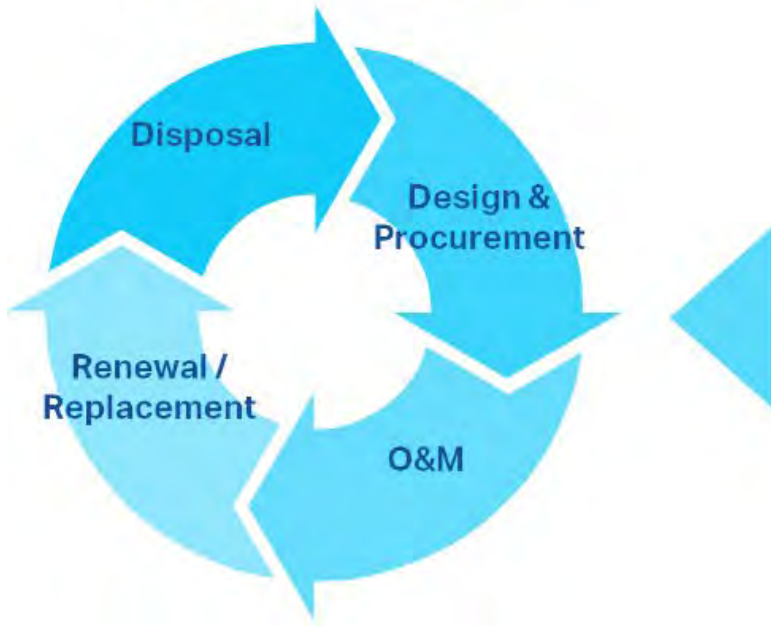
# City of Vaughan: Development By Decade



- 1900 - 1959
- 1960 - 1969
- 1970 - 1979
- 1980 - 1989
- 1990 - 1999
- 2000 - 2009
- 2010 - 2020

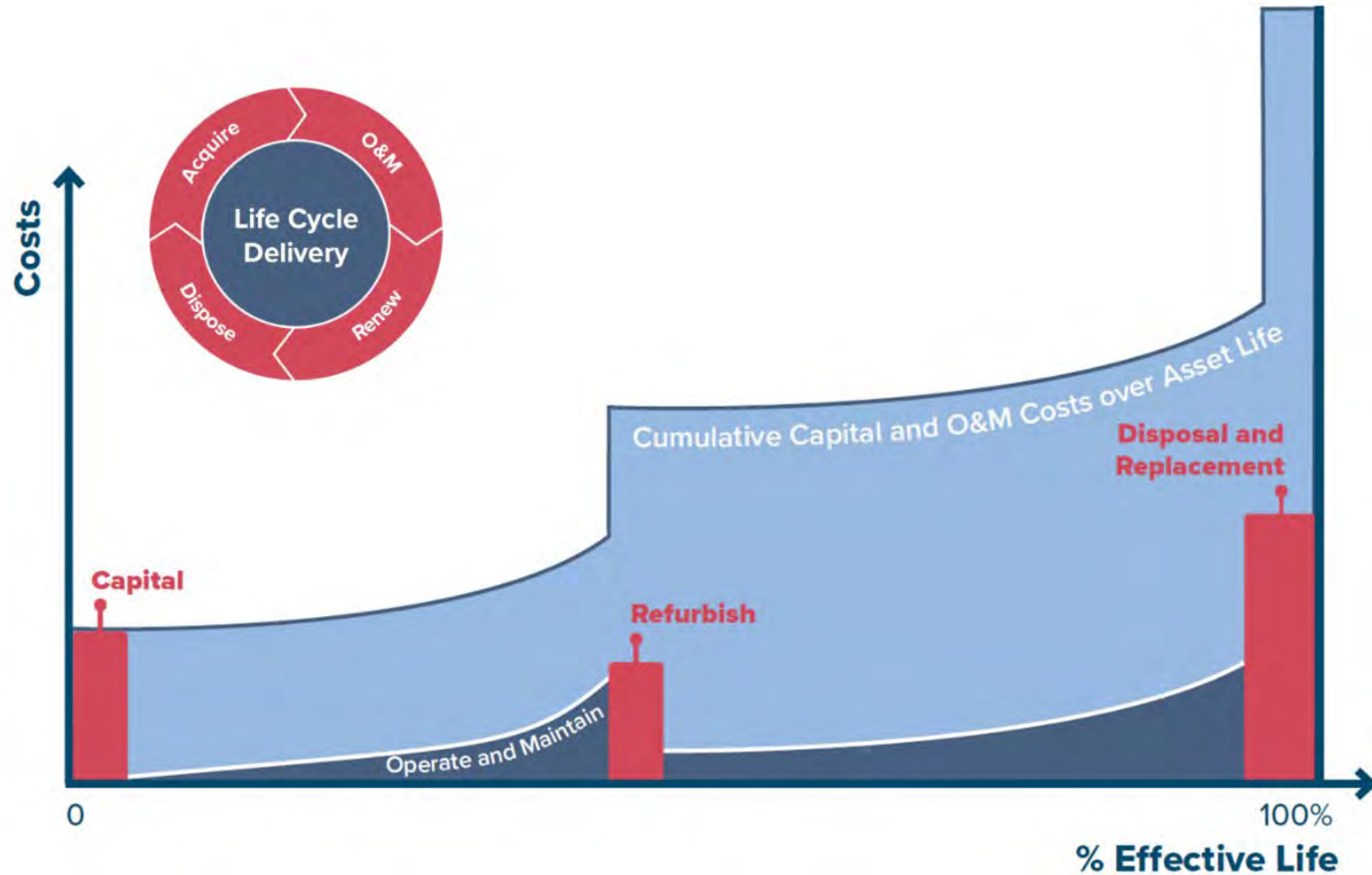
# Asset Management Plans: Approach

## Typical Asset Lifecycle



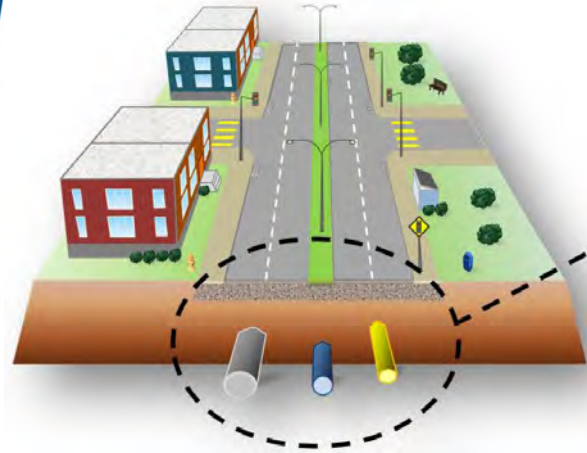


# Asset Management Plans: Life Cycle Activities



# Risk-Based Multi-Asset Lifecycle Management

---



Road Corridor  
Asset Management Integration

- **Decision support system (dTIMS) formalizes a comprehensive approach to the risk-based optimization of capital funding allocations across multiple asset classes.**
- **Geo-coordination of capital projects across Road, Water, Wastewater and Stormwater assets can yield up to 20% in cost savings.**
- **Cross-asset geo-coordination also reduces duration of interruption impacts for the affected local community.**



# 3. Asset Management Plans

## State of the Infrastructure



# Water Asset Inventory



**\$ 1.5 B**

| <b>Components:</b>                       | <b>Inventory:</b> |
|--|-------------------|
| <b>Chambers</b>                          | <b>10,421</b>     |
| <b>Hydrants</b>                          | <b>10,309</b>     |
| <b>Junctions</b>                         | <b>29,993</b>     |
| <b>Service Connections (Commercial)</b>  | <b>3,616</b>      |
| <b>Service Connections (Residential)</b> | <b>87,943</b>     |
| <b>Valves</b>                            | <b>52,642</b>     |
| <b>Water Mains</b>                       | <b>1,146 km</b>   |
| <b>Water Meters</b>                      | <b>91,081</b>     |



# Wastewater Asset Inventory



## Components:

## Inventory:

**Flow Meters**

**45**

**Generator Station**

**1**

**Laterals**

**246 km**

**Manholes**

**16,174**

**Pump Stations**

**12**

**Sanitary Sewer Mains**

**1,000 km**

# Stormwater Asset Inventory



**\$ 2 B**

## **Components:**

## **Inventory:**

**Catch Basins**

**21,375**

**Culverts**

**177**

**Ditches & Devices**

**776**

**In/Out Structures**

**756**

**Laterals**

**226 km**

**Manholes**

**16,125**

**Storm Sewer Mains**

**1,213.5 km**

**Stormwater Management Ponds**

**153**



# Road Asset Inventory



**\$ 1.5 B**

## **Components:**

## **Inventory:**

---

**Collector Roads**

**744 lane km**

---

**Laneways**

**15 lane km**

---

**Rural Roads**

**110 lane km**

---

**Urban Local Roads**

**1,273 lane km**

---

# Bridge Asset Inventory



## Components:

## Inventory:

**Bridges**

**33**

**Culverts**

**115**

**Pedestrian Bridges**

**41**

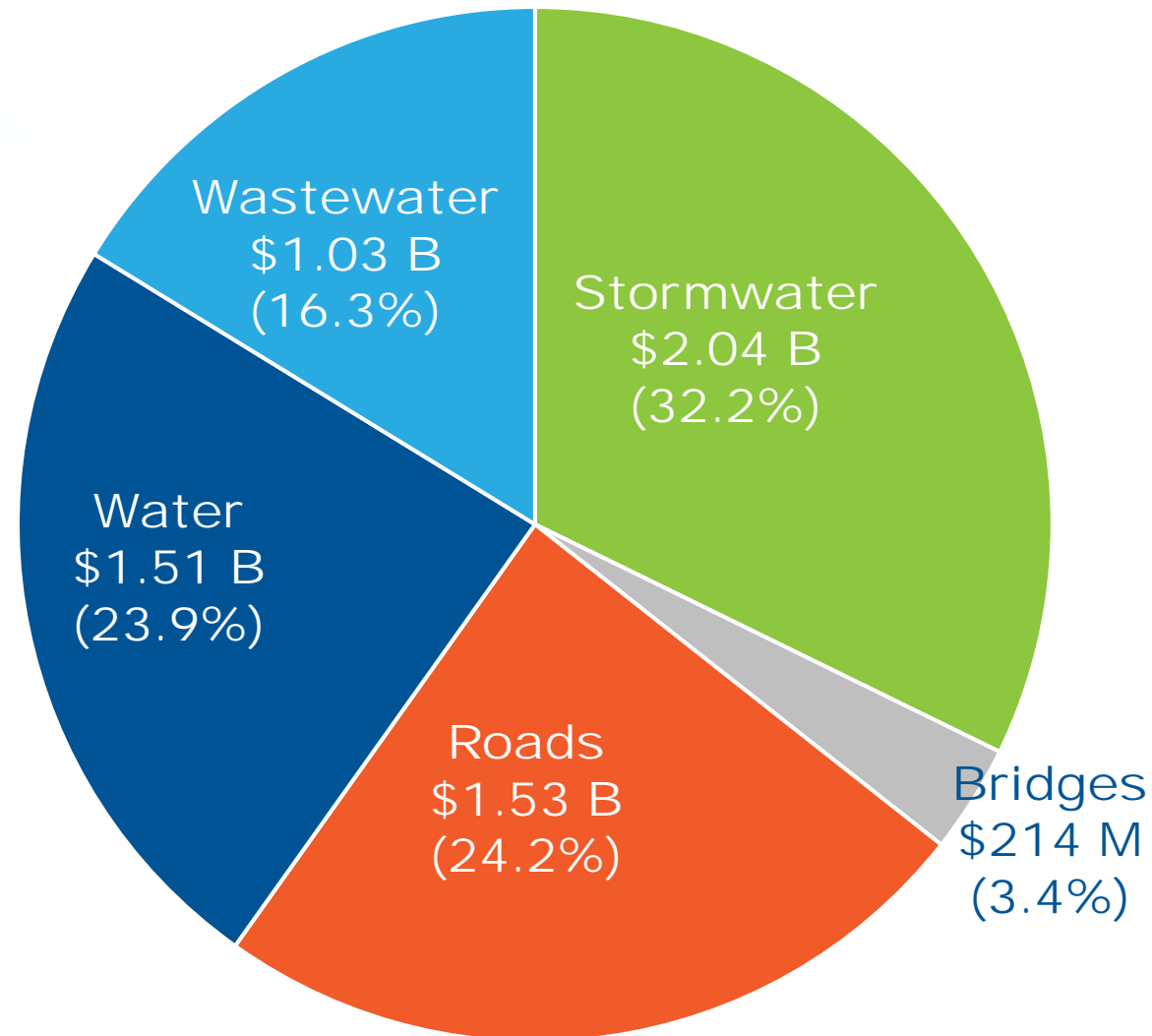
**Pedestrian Culverts**

**4**



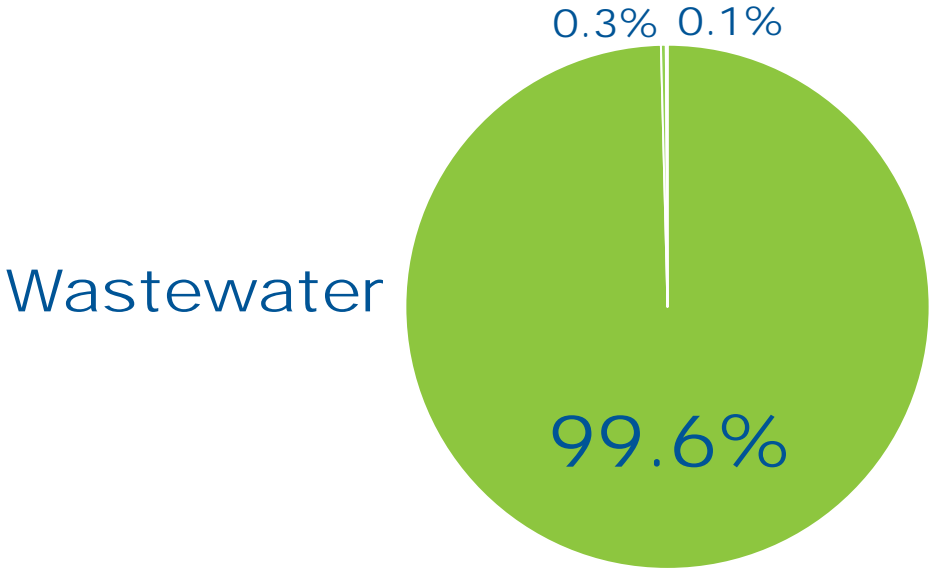
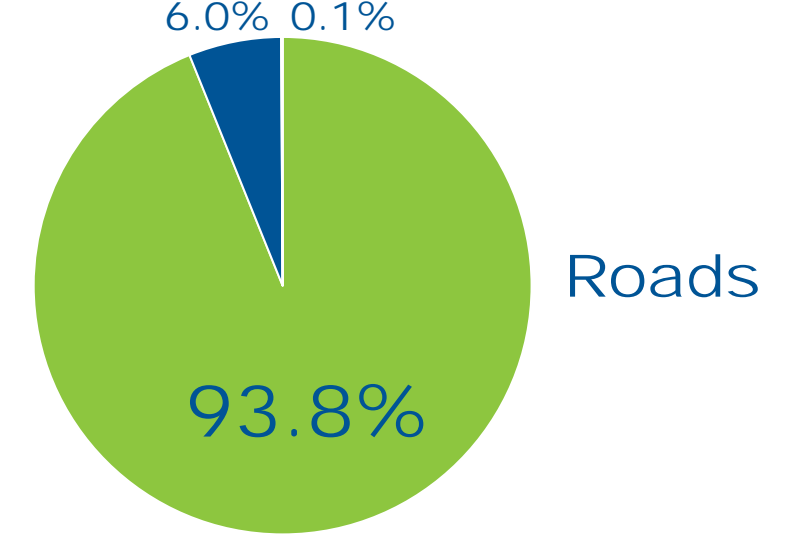
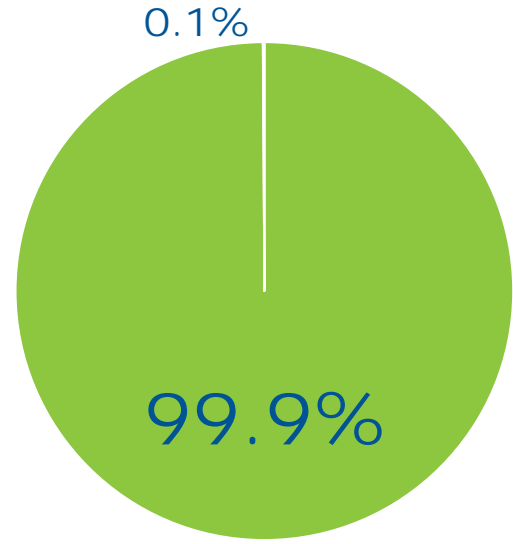
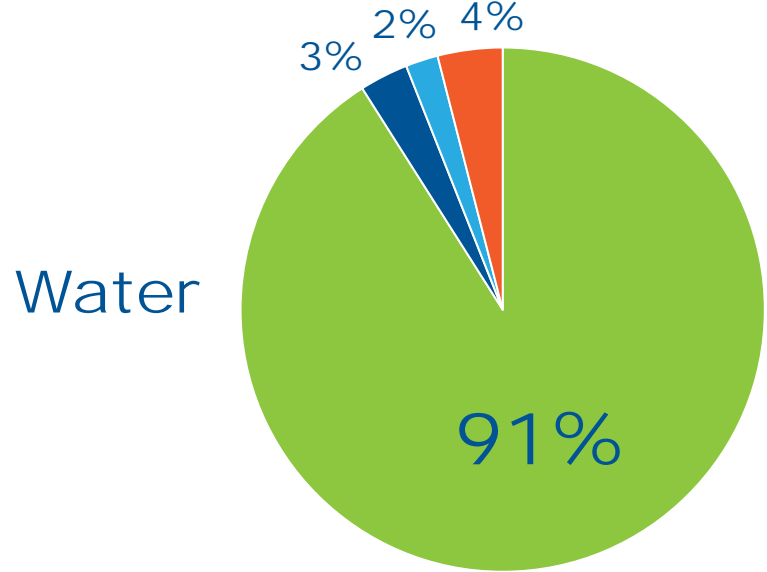
# Total Asset Replacement Value

---

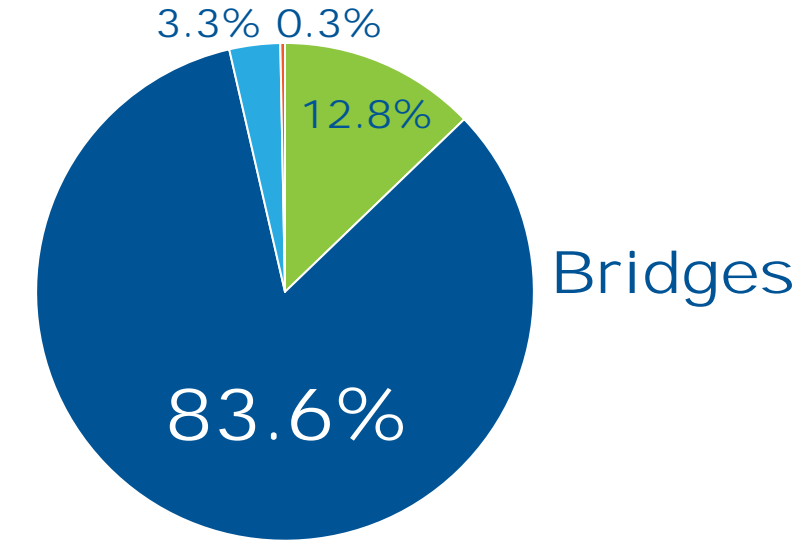


Total  
Valuation of  
Core Assets  
= \$6.3 B

# Asset Condition



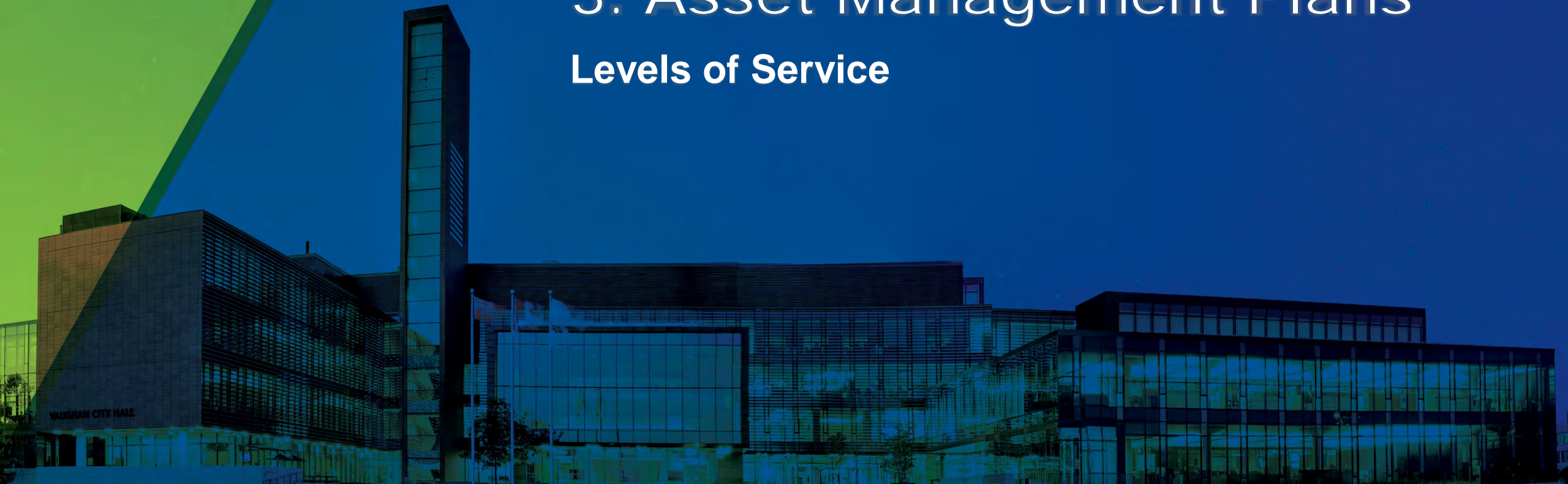
Stormwater





# 3. Asset Management Plans

## Levels of Service



# Level of Service Measures

---

| Major Asset Class | Community LOS Measures  | Technical LOS Measures                                |
|-------------------|---|---|
| Water             | Map illustrating areas that are connected to the water system.        | % of properties with access to the water system.      |
| Wastewater        | Map illustrating areas that are connected to the wastewater system.   | % of properties with access to the wastewater system. |
| Stormwater        | Map illustrating areas that are serviced by the stormwater system.    | % of properties resilient to 100-year storm.          |
| Roads             | Images illustrating the different levels of road pavement conditions. | Average road pavement condition index value.          |
| Bridges           | Images illustrating the different levels of bridge conditions.        | Average bridge condition index value.                 |

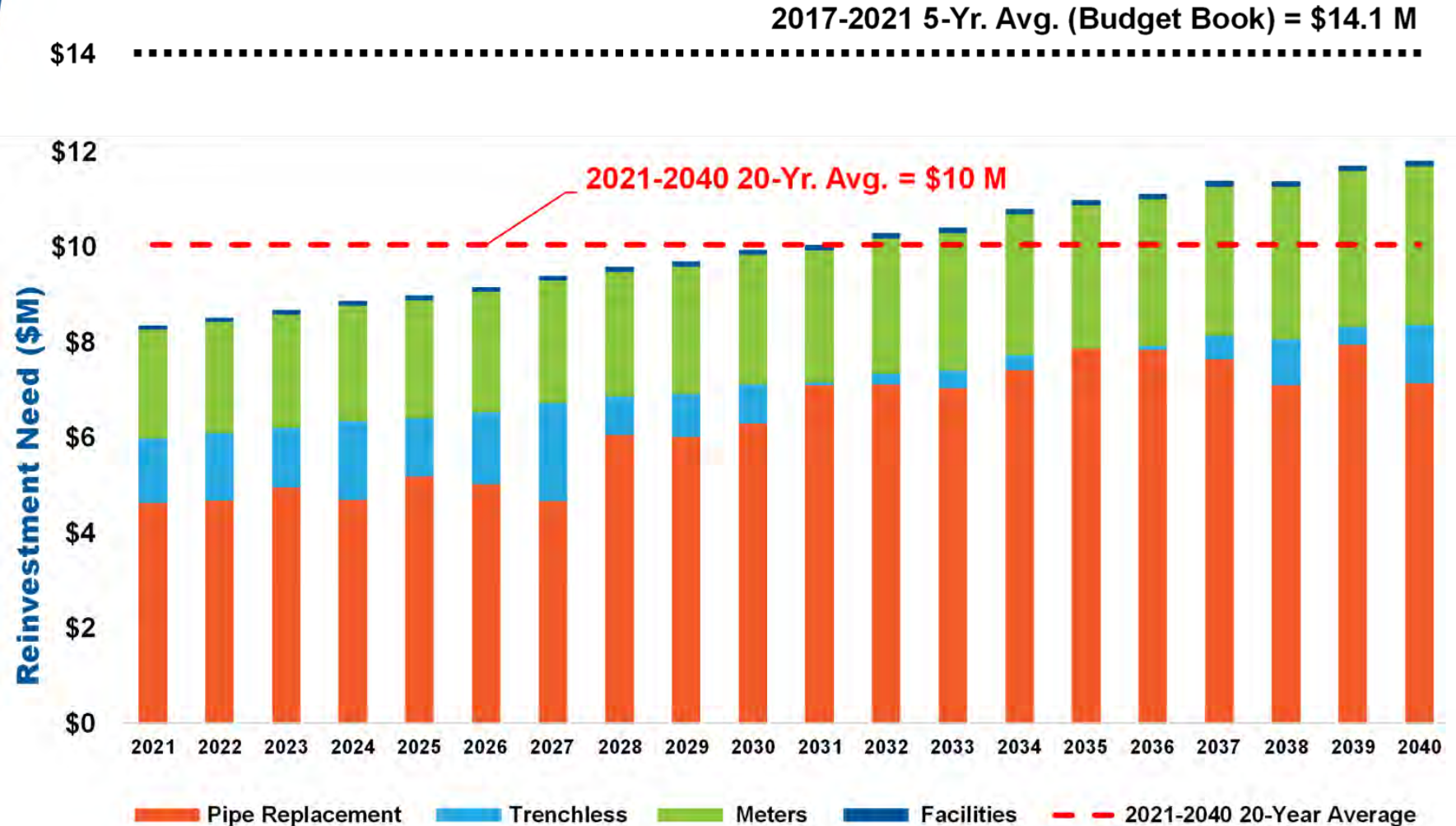


# 4. Asset Management Plans

## Funding Needs Analysis

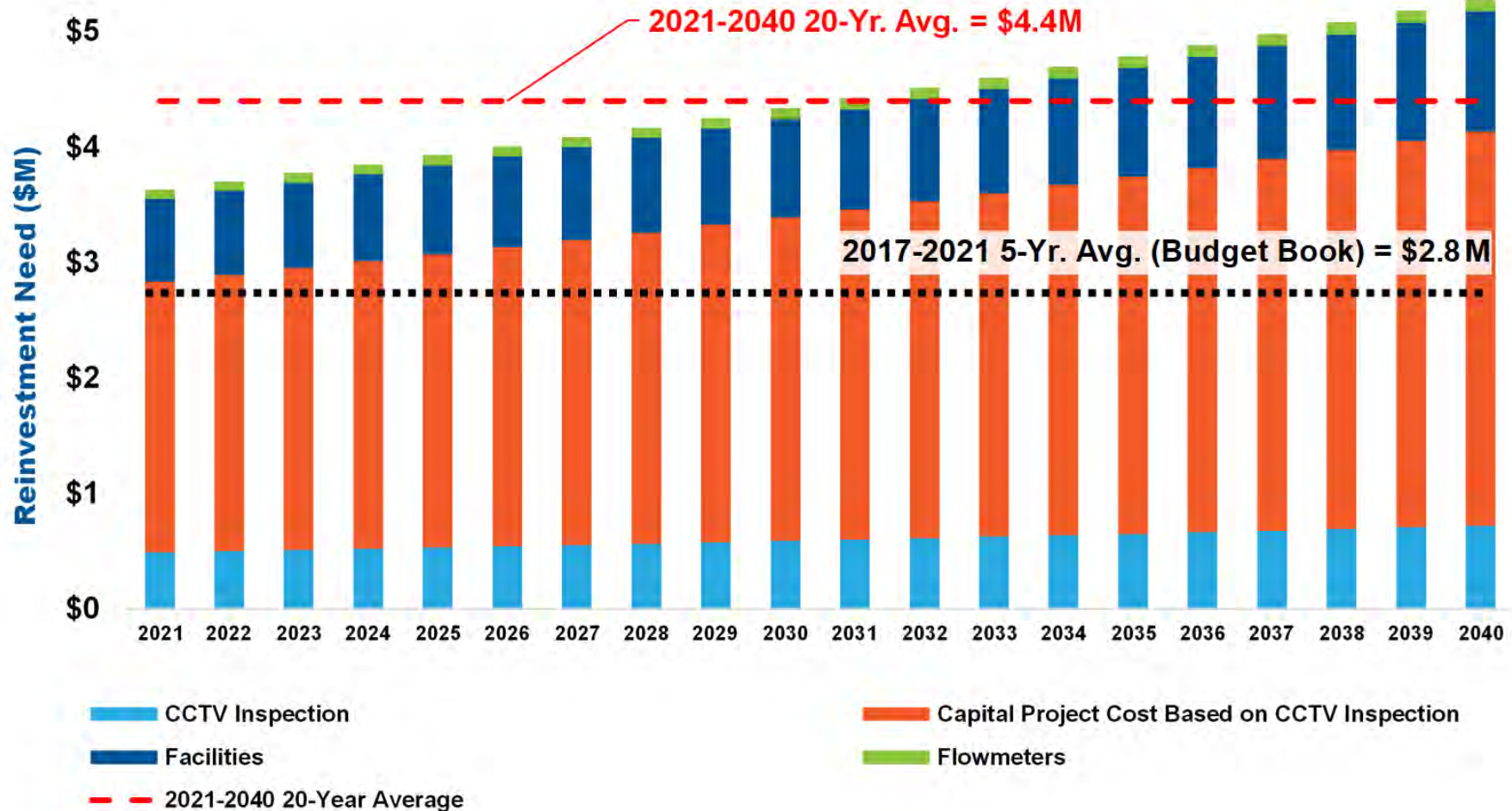


# Annual Capital Funding Needs: Water

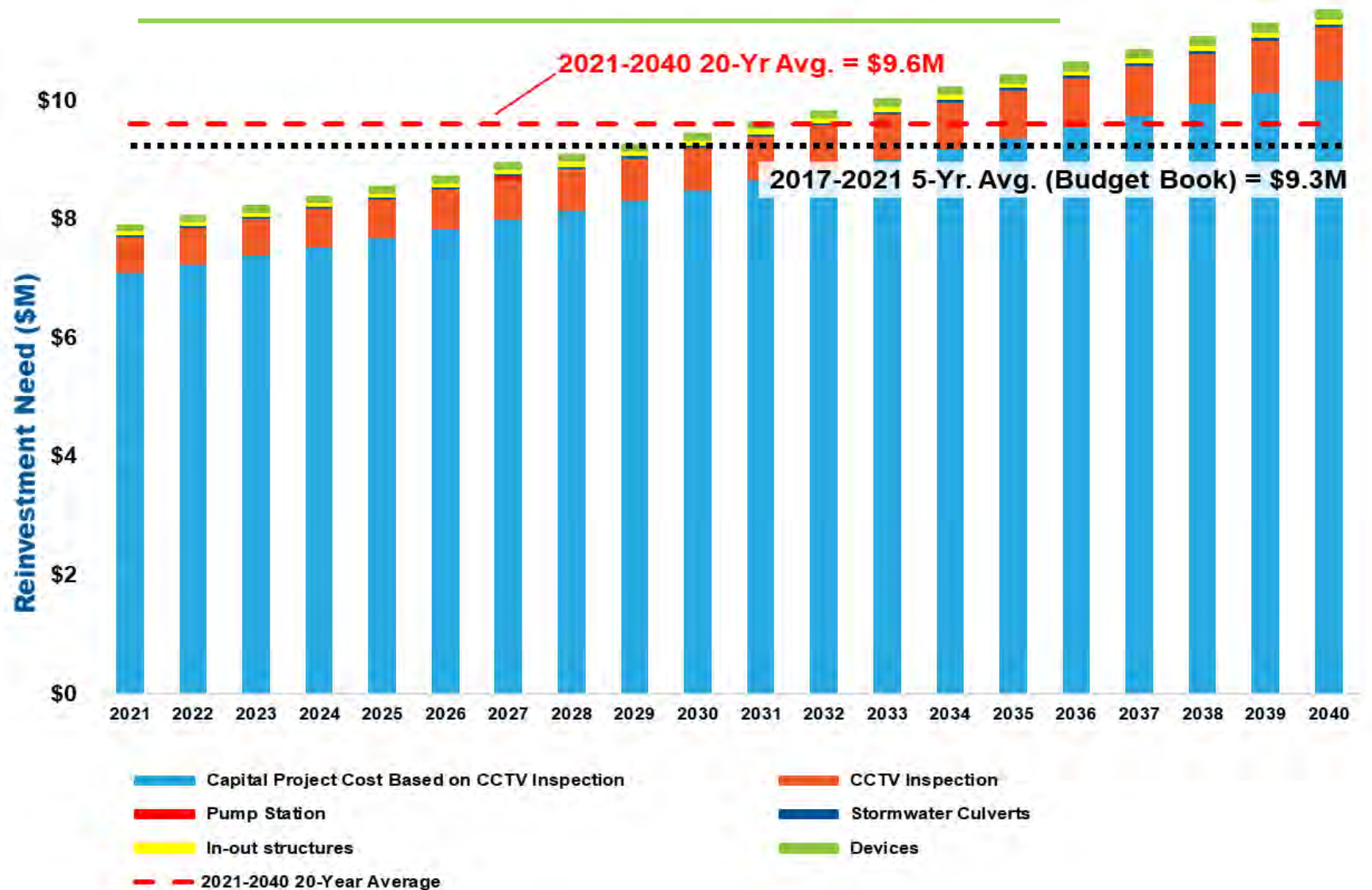




# Annual Capital Funding Needs: Wastewater

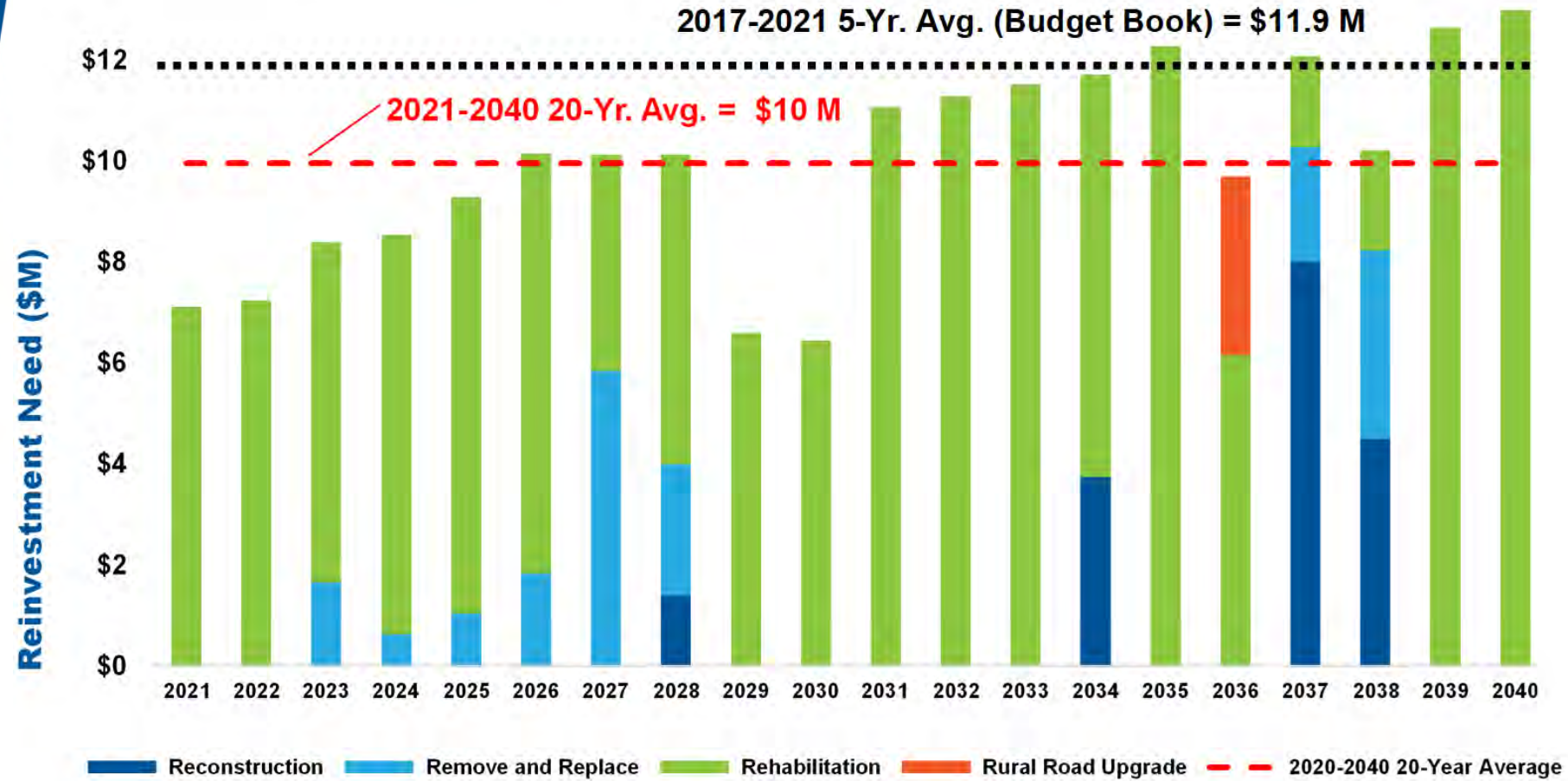


# Annual Capital Funding Needs: Stormwater





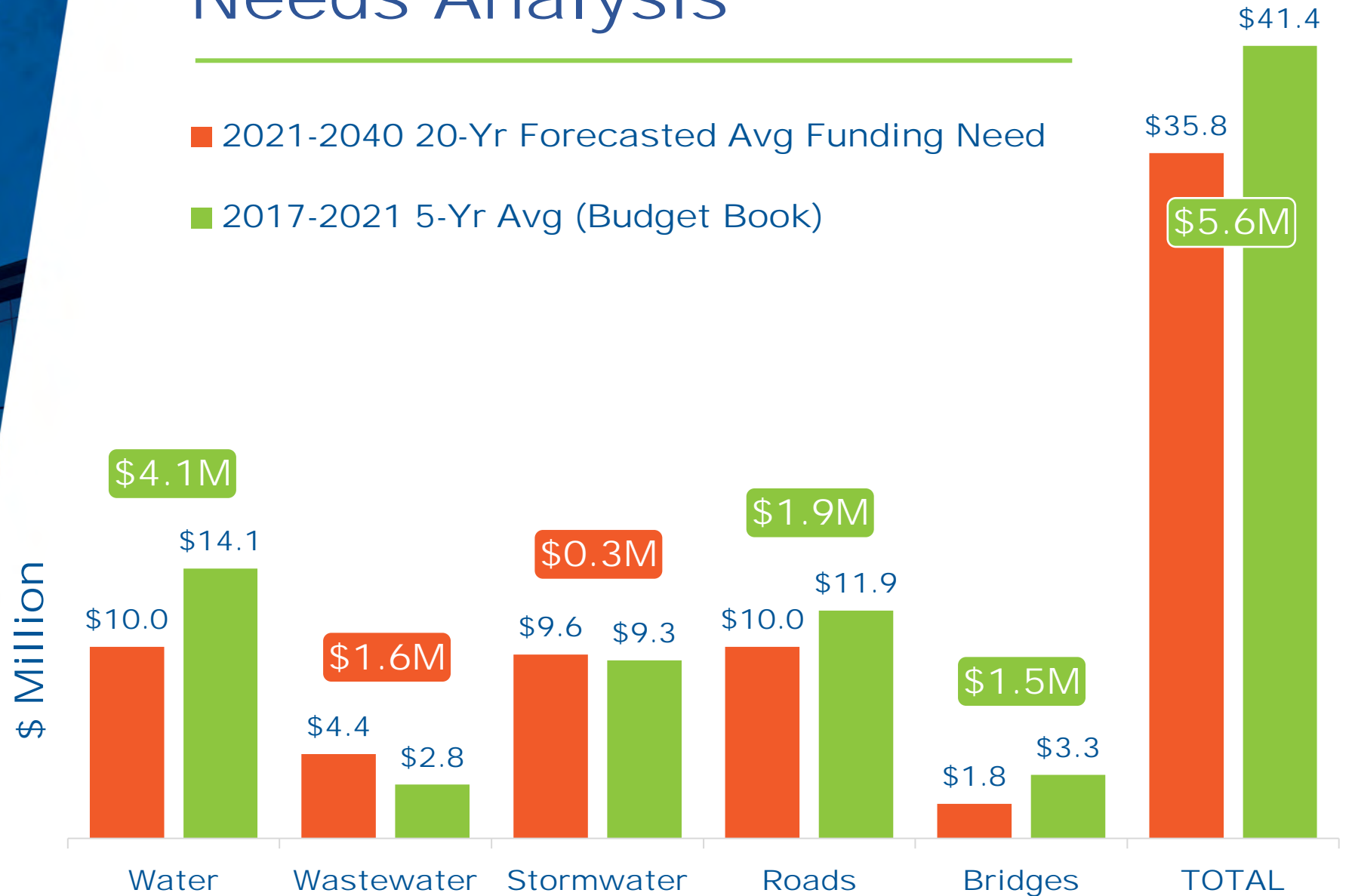
# Annual Capital Funding Needs: Roads



# Summary of Annual Asset Needs Analysis

■ 2021-2040 20-Yr Forecasted Avg Funding Need

■ 2017-2021 5-Yr Avg (Budget Book)





# Program Management Process

## Infrastructure Development Portfolio



# Next Steps

---

## **Council Endorsement: Asset Management Plans for Core Assets**

- Council Endorsement of AM Plans
- Posting of AM Plans on City Website
- Input into Allocation of Capital Funds and Prioritization of Capital Projects (Infrastructure Development)
- Input into Long Term Fiscal Model and Plan (Finance)
- Development of AM Plans for Remaining Non-Core City Assets



# Questions







Thank You.

