



C1
COMMUNICATION
CW (1) - July 13, 2020
ITEM # - 2

DATE: July 10, 2020

TO: Honourable Mayor and Members of Council

FROM: Zoran Postic, Deputy City Manager, Public Works

RE: COMMUNICATION – Committee of the Whole, July 13, 2020 - Disera Drive – Temporary Road Closure

Purpose

To provide additional information about the proposed temporary road closure of Disera Drive from Centre Street to the Smart Centres access.

Background

At the June 29, 2020 Council meeting, Council directed staff to develop a plan to close Disera Drive from Centre Street to the Smart Centres access (an approximate 100-metre-long segment) at set times (weekends only) making it a pedestrian only area.

In response to Council, staff have prepared a report seeking approval for a temporary road closure of Disera Drive, in accordance with Council direction (Item No. 4).

Link to report:

<https://pub-vaughan.escrimemeetings.com/Meeting.aspx?Id=96f8b3b9-c562-4ebb-9f20-138abff7a17d&Agenda=Agenda&lang=English>

Analysis

Staff have been working collaboratively to develop the key elements of the temporary road closure plan, which include Traffic Management, Emergency Response and Communications.

Traffic Management Plan

Local businesses and residents will be notified of the closure. On the days of the closure, barriers will be installed at either end of the street (as outlined in attachment 1). In consultation with York Regional Police, arrangements will be made for paid duty officers to manage traffic during the road closure. York Region will also provide two portable variable message signs on Centre Street to give advance notice to motorists and will make necessary adjustment to signal timings for the traffic lights. Road closure notice signage will be installed at strategic locations three (3) weeks prior to the road closure. Staff will monitor the road closure and make necessary adjustment to the plan, as required.



Emergency Response Plan

A remote site review and preliminary analysis have been conducted to determine the maximum number of people allowable in the space at a given time based on COVID-19 physical distancing requirements. More detailed emergency procedures will be developed as specific activities are defined. In addition, emergency access will be made available for fire trucks.

Communication Plan

The communication plan contains several key elements to inform residents and businesses of the road closure and pedestrian only area, including but not limited to:

1. Distribution of a direct mailer to local residents;
2. Installation of mobile signs in the community to inform residents and businesses; and,
3. Geo-targeted social media ads specifically for the Thornhill community will also be used to raise awareness.

The Corporate and Strategic Communications department will leverage all communications channels (social media accounts, electronic newsletters, and website) to ensure the public is fully informed about the temporary closure.

Staff have initiated discussions with Smart Centres to gain input from local businesses regarding the temporary road closure plan and are anticipating feedback from local business shortly.

The anticipated timing for the implementation of the temporary road closure is approximately 5 weeks upon receipt of support from all stakeholders and plan approval. Staff are considering the following road closure timing: from Saturday at 5:00 a.m. to Monday 12:01 a.m., or where Monday is a statutory holiday, from Saturday 5:00 a.m. to Tuesday 12:01 a.m.

An editorial correction is to be made to the report (Item No. 4) in the background section. It should note item 15, report 22 to be consistent with the previous reports/Authority section of the report.

Financial Implications

The estimated cost to implement the temporary road closure of Disera Drive is \$24,000 per closure. This includes traffic management control measures, paid duty officers, waste and recycling collection, associated staff time to implement and monitor the road closure, and the costs for printing and distribution of communication material.

Border Regional Impacts/Considerations

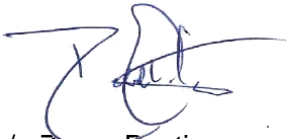
Staff are collaborating with York Region in the development of the temporary road closure and traffic management plan, including the signal timing plan at key regional intersections, and the use of portable variable message signs. York Regional police have been informed of the temporary road closure and also provided input to the traffic management plan.

Conclusion

As per Council direction at the June 29, 2020 Council meeting, staff are working with key stakeholders to develop a plan to temporarily close the southern section of Disera Drive between Centre Street and the Smart Centres access. Planning efforts for a temporary closure are underway, and the estimated cost per closure is \$24,000.

Staff recommends the approval of a bylaw enabling the temporary road closure of Disera Drive to vehicular traffic during set times (weekend only) from August 1, 2020 to October 31, 2020 upon completion of a feasible stakeholder supported plan.

Respectfully submitted,



c/o Zoran Postic
Deputy City Manager, Public Works

Attachments:

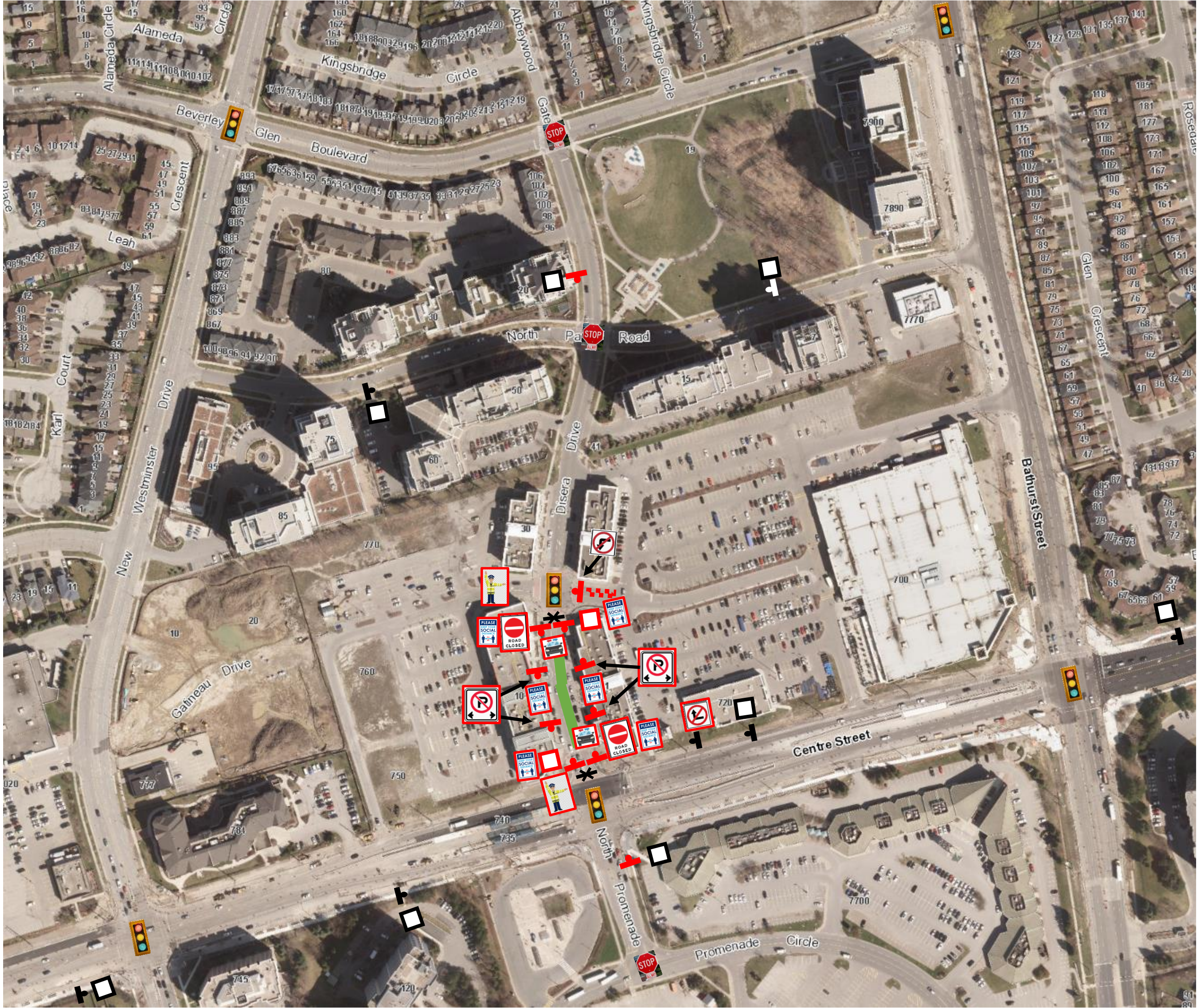
1. Traffic Management Plan

Copy to:

- Zoran Postic, Deputy City Manager of Public Works
- Nick Spensieri, Acting Deputy City Manager, Planning and Growth Management
- Vince Musacchio, Director, Infrastructure Planning & Corporate Asset Management
- Gus Michaels, Director, Bylaws & Compliance Licensing & Permit Services
- Darren Lynch, Chief Fire Prevention Office
- Sharon Waller, Manager, Emergency Planning
- Michael Genova, Director, Corporate and Strategic Communications
- Nadia Paladino, Director, Parks, Forestry and Horticulture Operations

Attachment No. 1

Traffic Management Plan



-  Existing Signal
-  Existing All-way Stop
-  Pedestrian Street
-  Barricade
-  Road Closing Notice Sign
-  Notice Sign
-  Proposed new pole
-  Police Car
-  Paid Duty Officer
-  Social Distance Sign
-  Road Closed Sign
-  Barrels
-  Portable Variable Message Sign on Centre St
 - near Vaughan Blvd
 - near Atkinson Ave