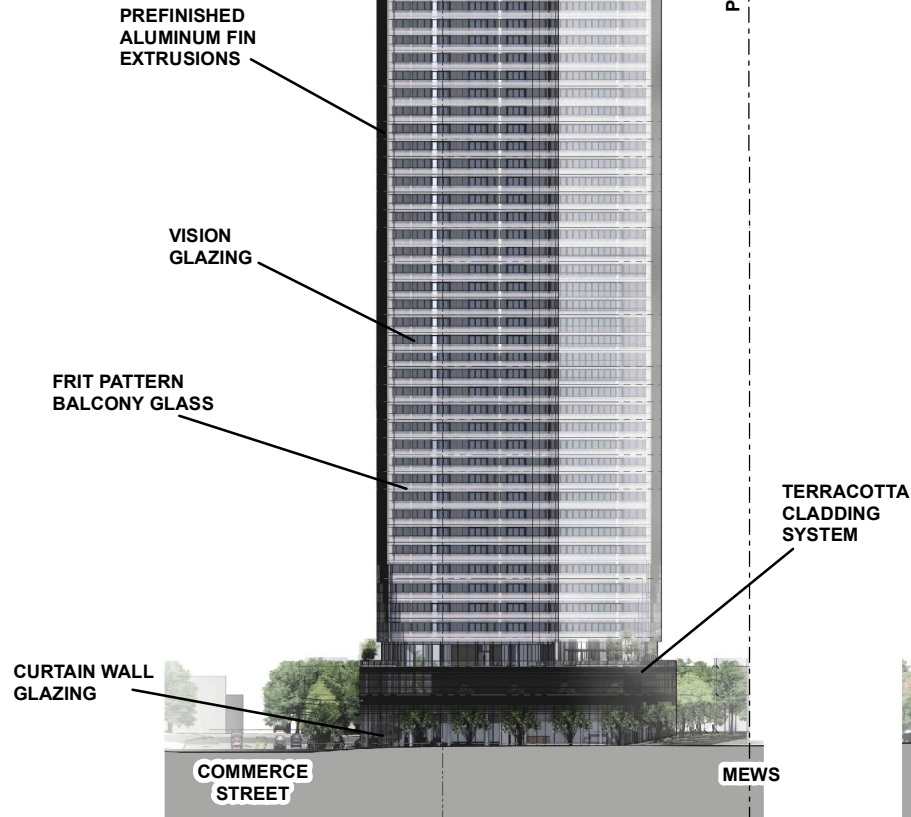


**TOWER B
(56-STOOREYS)**

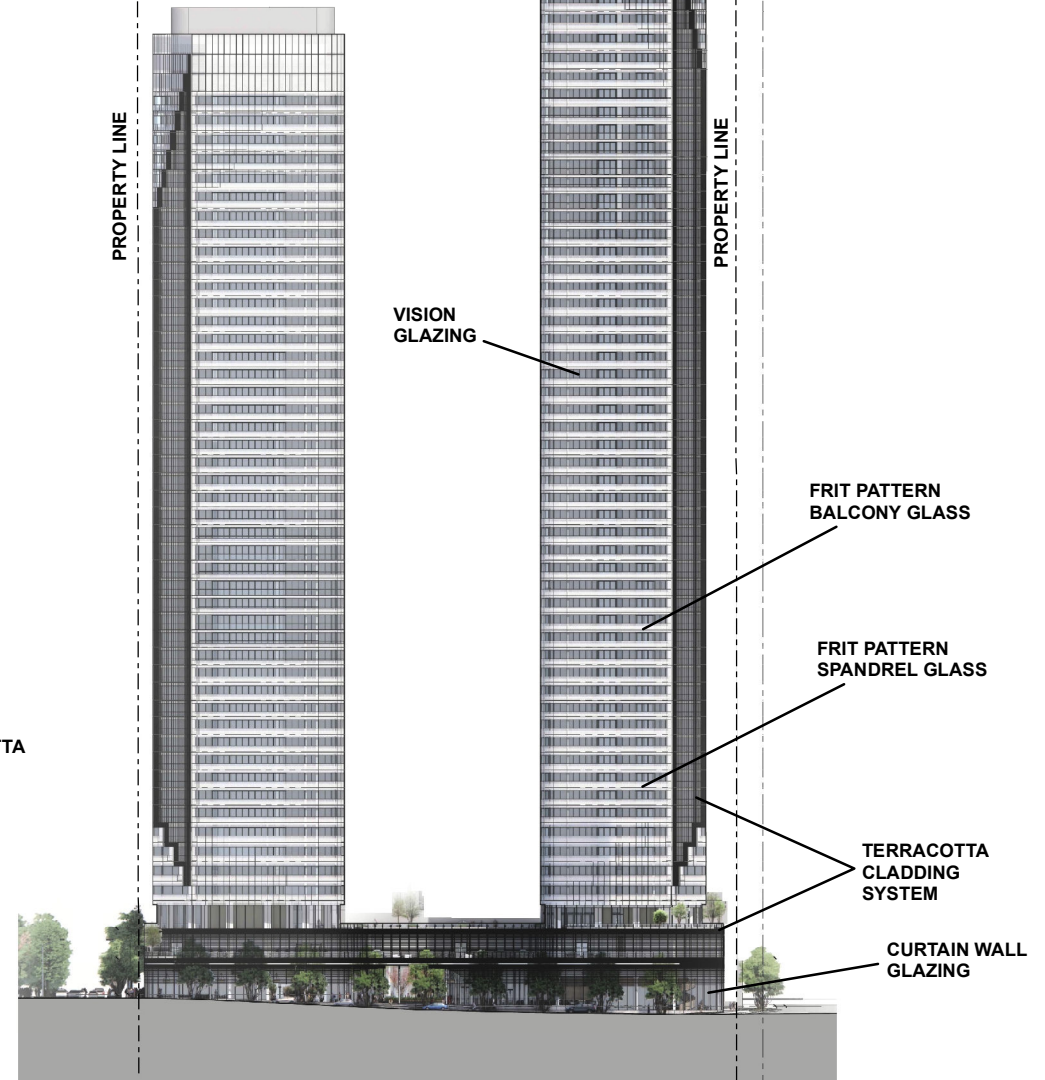
**TOWER A
(48-STOOREYS)**

**TOWER A
(48-STOOREYS)**

**TOWER B
(56-STOOREYS)**



SOUTH ELEVATION - FACING HIGHWAY 7



WEST ELEVATION - FACING COMMERCE STREET

Not to Scale

South and West Building Elevations

LOCATION:

Part of Lots 6 and 7, Concession 5

APPLICANT:

First Vaughan Investments Limited



Attachment

FILES: OP.20.015 and
Z.20.042

RELATED FILE: DA.20.067

DATE: May 4, 2021

5