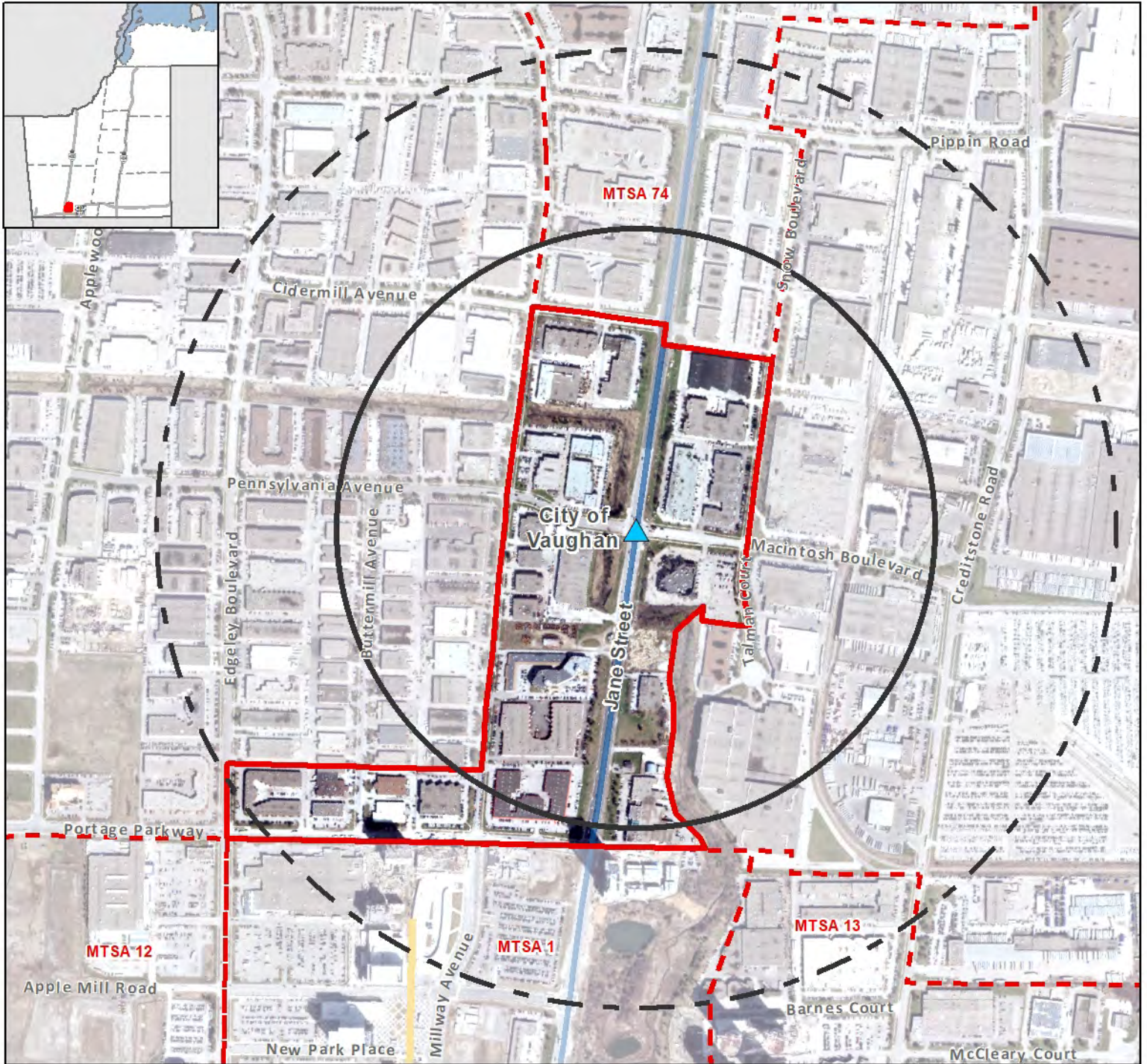






Pennsylvania BRT Station

Near Jane Street and Pennsylvania Avenue


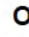

Vaughan



Legend

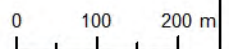
-  Other Bus Rapid Transit
-  Proposed MTSA Boundary
-  500m Radius
-  800m Radius
-  Adjacent Proposed MTSA Boundary

Priority Transit Corridors - Provincial Growth Plan

-  Subway
-  Other Transit Corridors
-  Bus Rapid Transit

Pennsylvania BRT Station MTSA Gross

Area:
36.99 ha



The Regional Municipality of York
Corporate Services,
Planning and Economic Development
February 2021

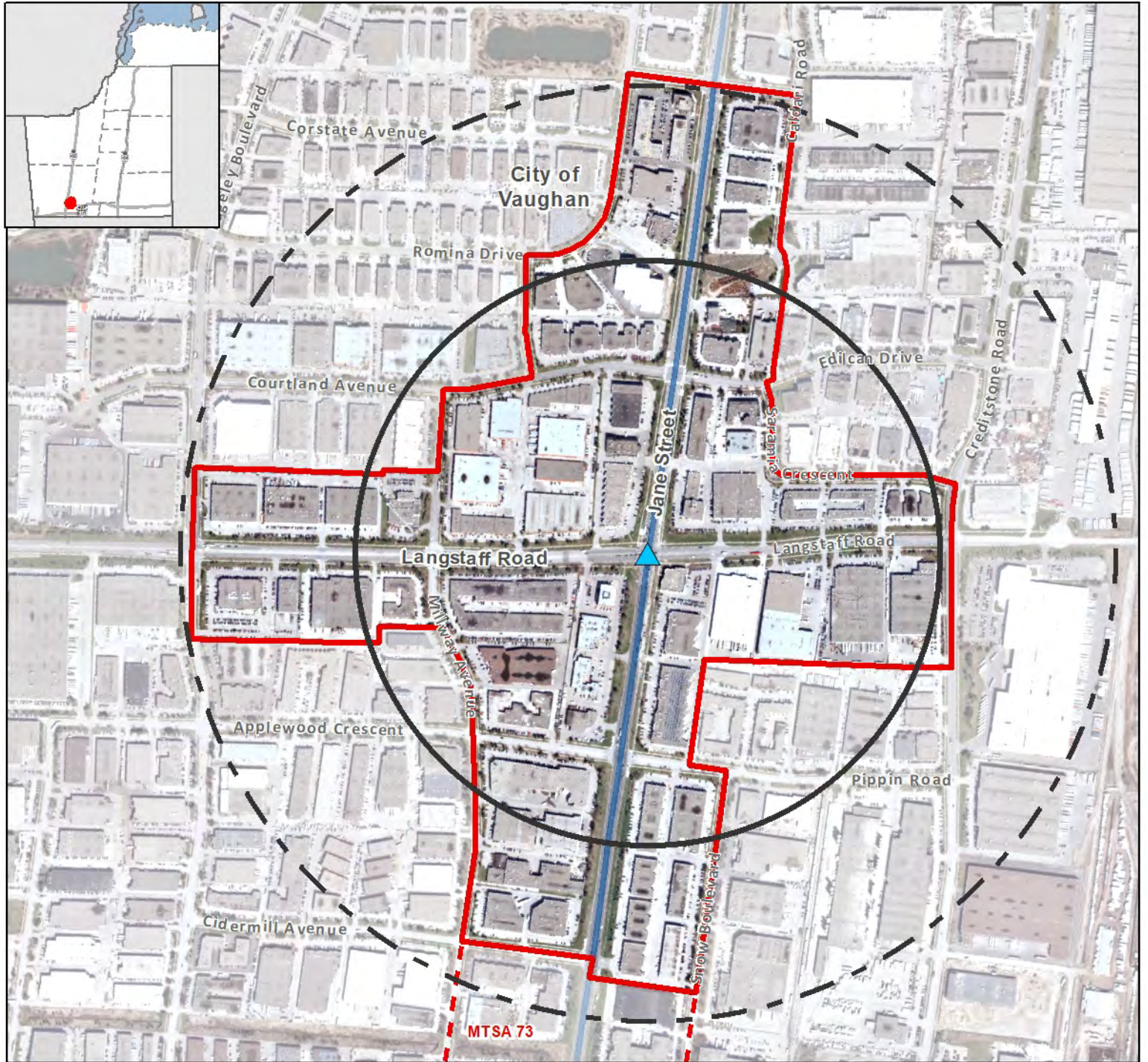
Data: © Queen's Printer for
Ontario 2003-2021

See York.ca for disclaimer information.

Langstaff BRT Station

Near Jane Street and Langstaff Road

MTSA 74
Vaughan



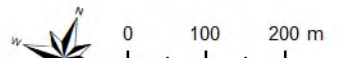
Legend

-  Other Bus Rapid Transit
-  Proposed MTSA Boundary
-  500m Radius
-  800m Radius
-  Adjacent Proposed MTSA Boundary

Other Transit Corridors

-  Bus Rapid Transit

**Langstaff BRT
Station MTSA
Gross Area:
88.37 ha**



The Regional Municipality of York
Corporate Services,
Planning and Economic Development
February 2021

Data: © Queen's Printer for
Ontario 2003-2021

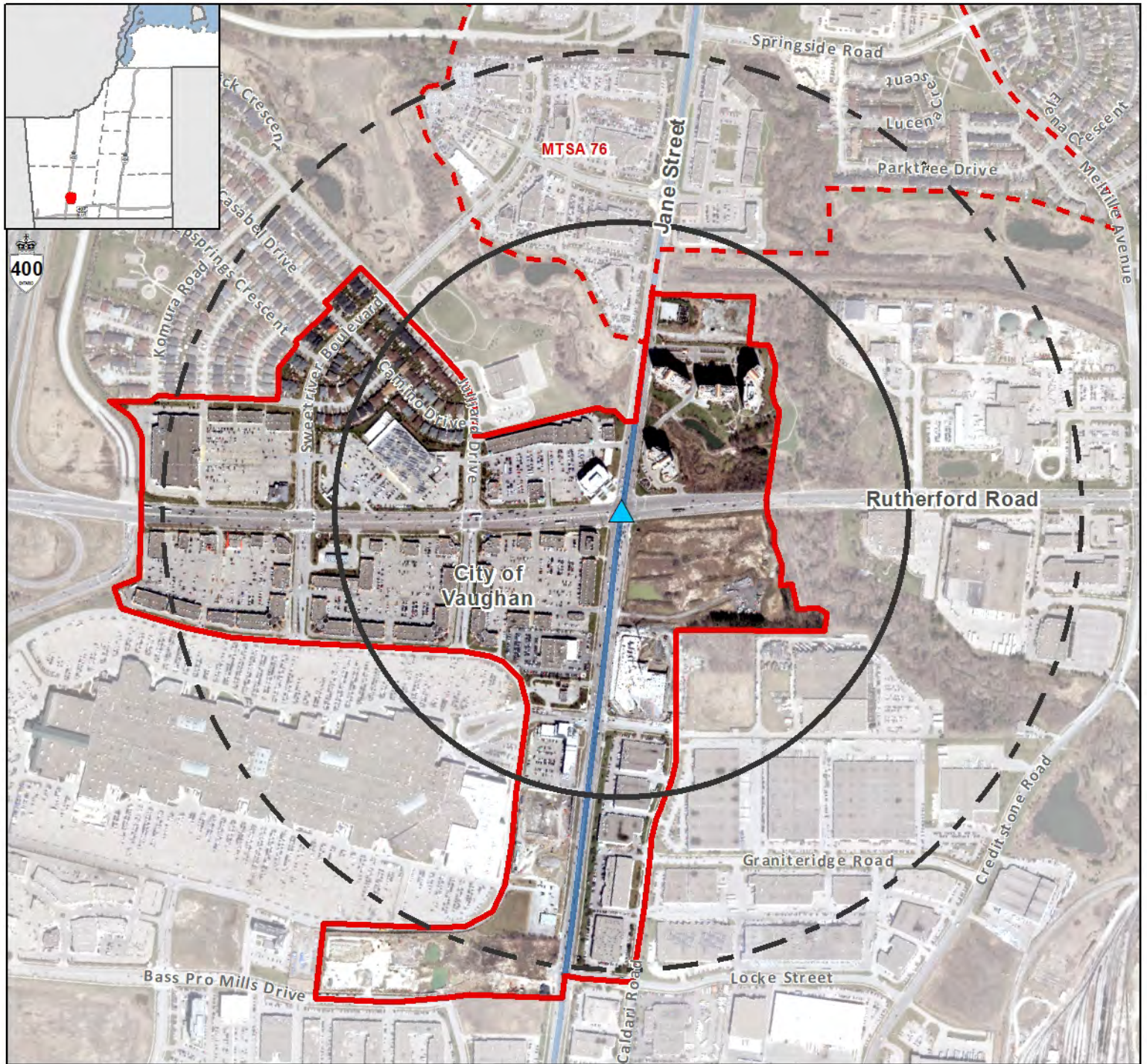
See York.ca for disclaimer information.

Vaughan Mills BRT Station

Near Jane Street and Rutherford Road

MTSA 75

Vaughan



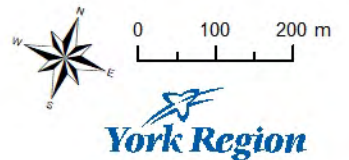
Legend

- Other Bus Rapid Transit
- Proposed MTSA Boundary
- 500m Radius
- 800m Radius
- Adjacent Proposed MTSA Boundary

Other Transit Corridors

- Bus Rapid Transit

**Vaughan Mills
BRT Station
MTSA Gross
Area:
73.78 ha**



The Regional Municipality of York
Corporate Services,
Planning and Economic Development
February 2021

Data: © Queen's Printer for
Ontario 2003-2021

See York.ca for disclaimer information.

Springside BRT Station

Near Jane Street and Springside Road

MTSA 76

Vaughan



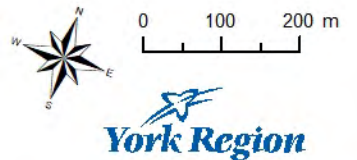
Legend

-  Other Bus Rapid Transit
-  Proposed MTSA Boundary
-  500m Radius
-  800m Radius
-  Adjacent Proposed MTSA Boundary

Other Transit Corridors

-  Bus Rapid Transit

Springside BRT Station MTSA Gross Area:
55.31 ha



The Regional Municipality of York
Corporate Services,
Planning and Economic Development
February 2021

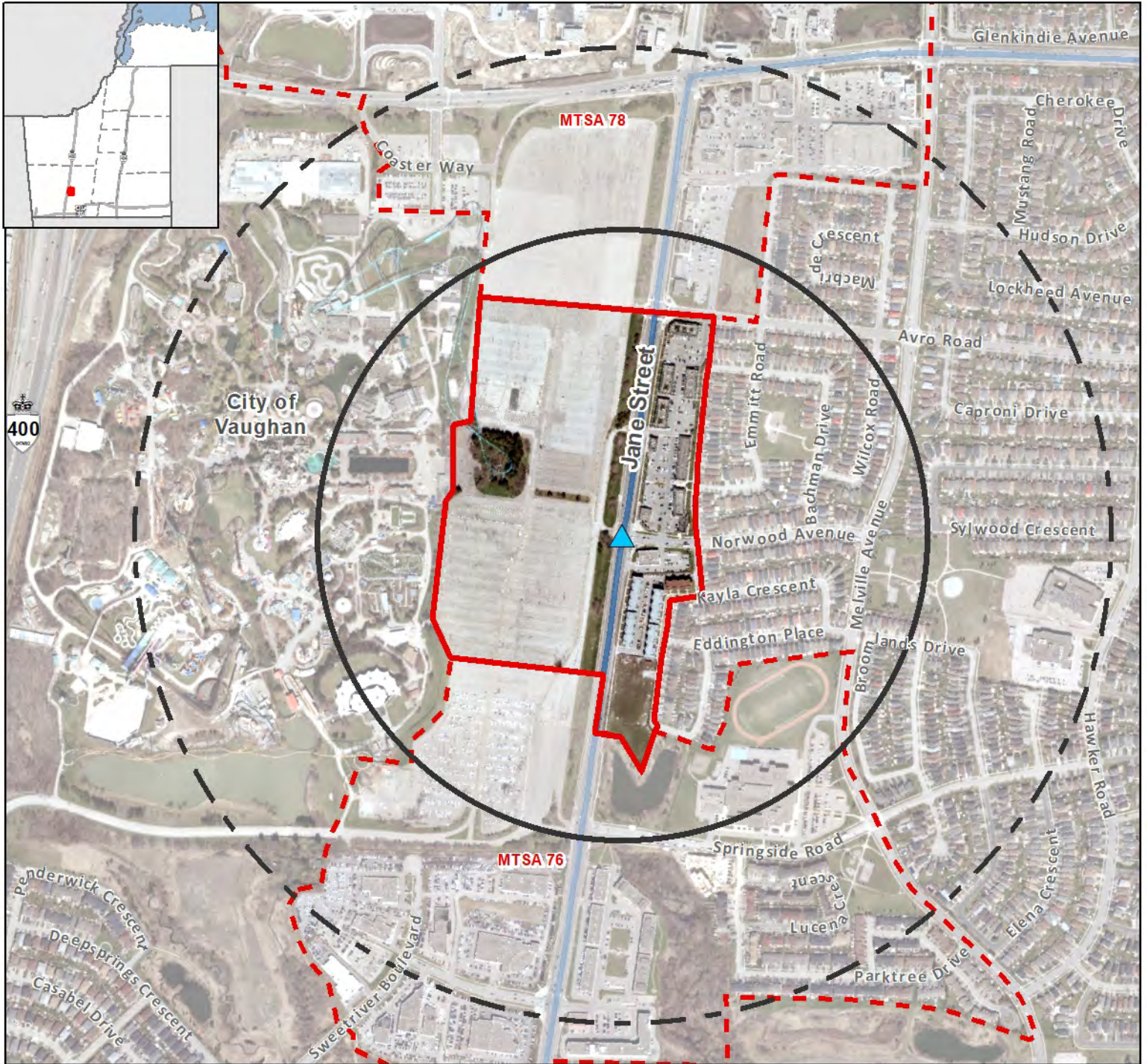
Data: © Queen's Printer for
Ontario 2003-2021

See York.ca for disclaimer information.



Norwood BRT Station


Near Jane Street and Norwood Avenue

MTSA 77
Vaughan

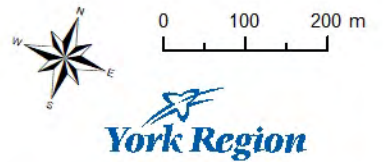


Legend

-  Other Bus Rapid Transit
-  Proposed MTSA Boundary
-  500m Radius
-  800m Radius
-  Adjacent Proposed MTSA Boundary

- Other Transit Corridors**
-  Bus Rapid Transit

Norwood BRT Station MTSA Gross Area:
24.54 ha



The Regional Municipality of York
Corporate Services,
Planning and Economic Development
February 2021

Data: © Queen's Printer for
Ontario 2003-2021

See York.ca for disclaimer information.

Major Mackenzie BRT Station

Near Jane Street and Major Mackenzie Drive

MTSA 78
Vaughan



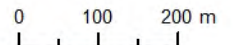
Legend

-  Other Bus Rapid Transit
-  Proposed MTSA Boundary
-  500m Radius
-  800m Radius
-  Adjacent Proposed MTSA Boundary

Other Transit Corridors

-  Bus Rapid Transit

Major Mackenzie BRT Station MTSA
Gross Area:
88.22 ha



The Regional Municipality of York
Corporate Services,
Planning and Economic Development
February 2021

Data: © Queen's Printer for
Ontario 2003-2021

See York.ca for disclaimer information.