

# COMMITTEE OF THE WHOLE

155 & 166 WALLACE STREET

City of Vaughan

April 7, 2021

COMMUNICATION – C19  
ITEM 4  
Committee of the Whole (Public Meeting)  
April 7, 2021

**WESTON**  
CONSULTING

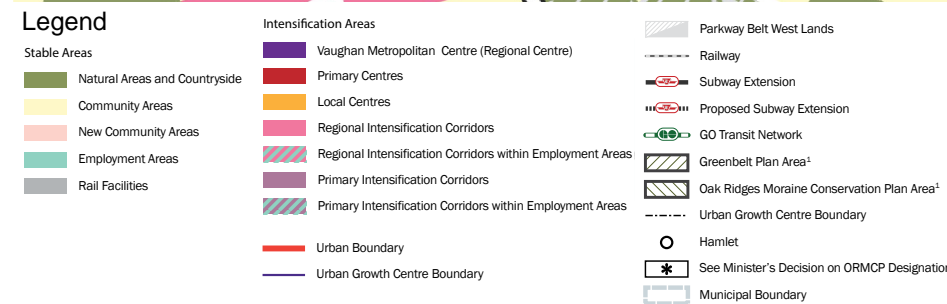
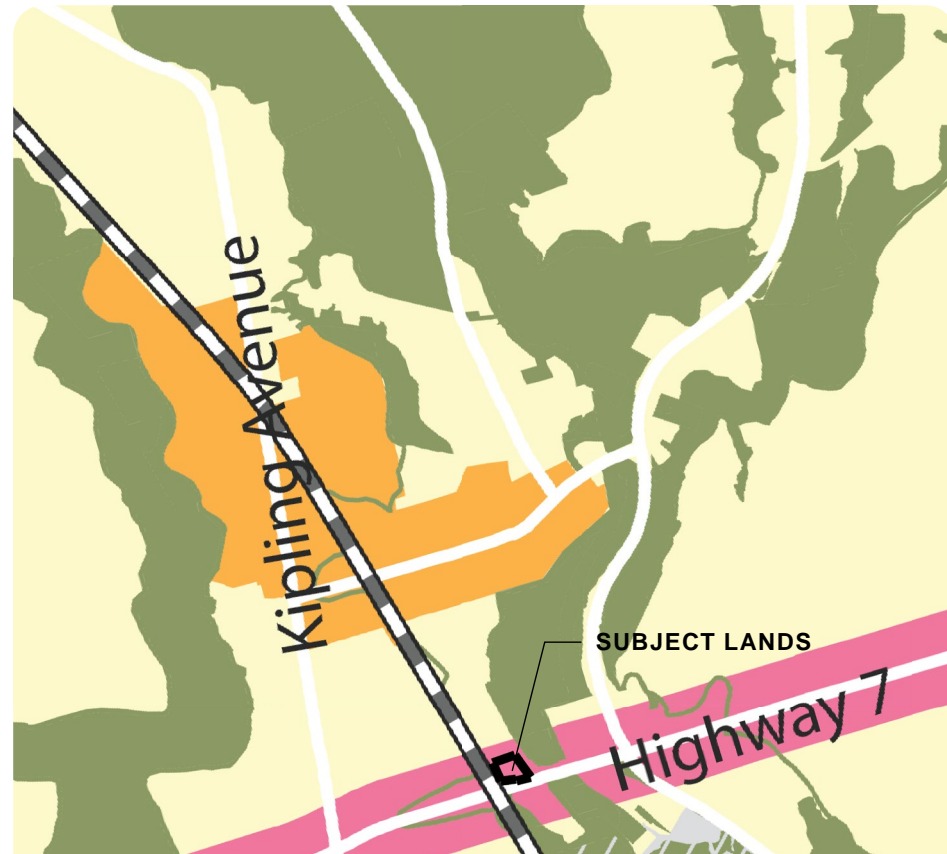


# CONTEXT & LOCATION

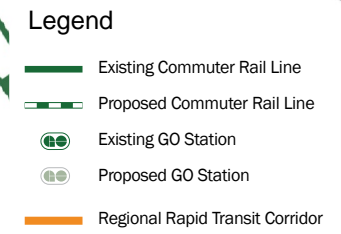


Aerial Photo Showing Subject Property

# POLICY CONTEXT - OFFICIAL PLAN



City of Vaughan Official Plan - Schedule 1 Urban Structure



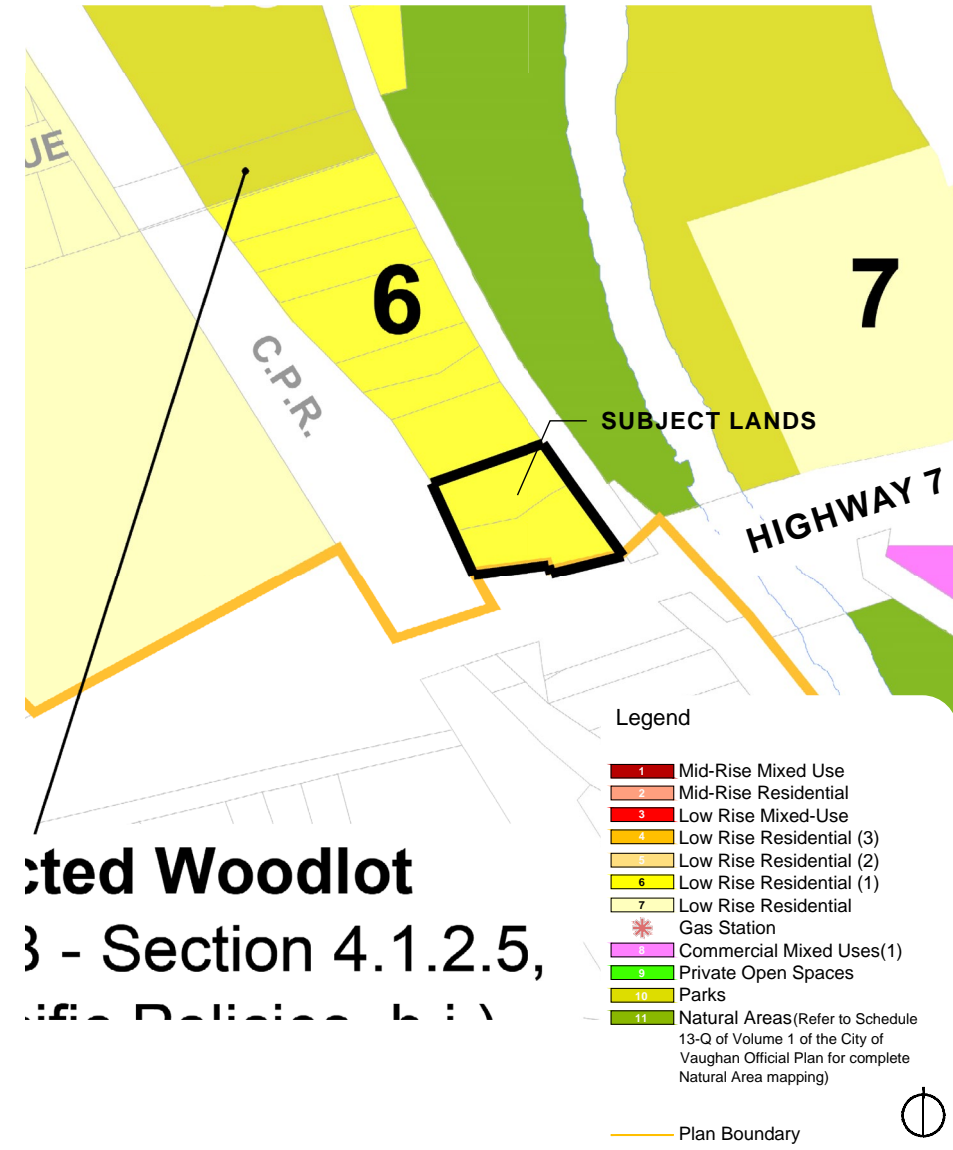
City of Vaughan Official Plan - Schedule 10 Major Transit Network

# POLICY CONTEXT - SECONDARY PLAN



- Woodbridge Centre Secondary Plan Boundary
  - Woodbridge Heritage Conservation District Area
  - Islington Avenue Corridor Study Area (OPA 597)
  - Highway 7 Corridor Study Area (OPA 661)
  - The Neighbourhoods (OPA 240)
  - Highway 7 Area (OPA 240)
  - Special Policy Areas (OPA 240, OPA 440)\*
- \*The limits of the Special Policy Areas (SPA) identified on this schedule and the SPA policies in OPAs 240 and 440 have been replaced by the SPA boundaries identified on Schedule 9 and the policies in Section 7.3 of this Secondary Plan.

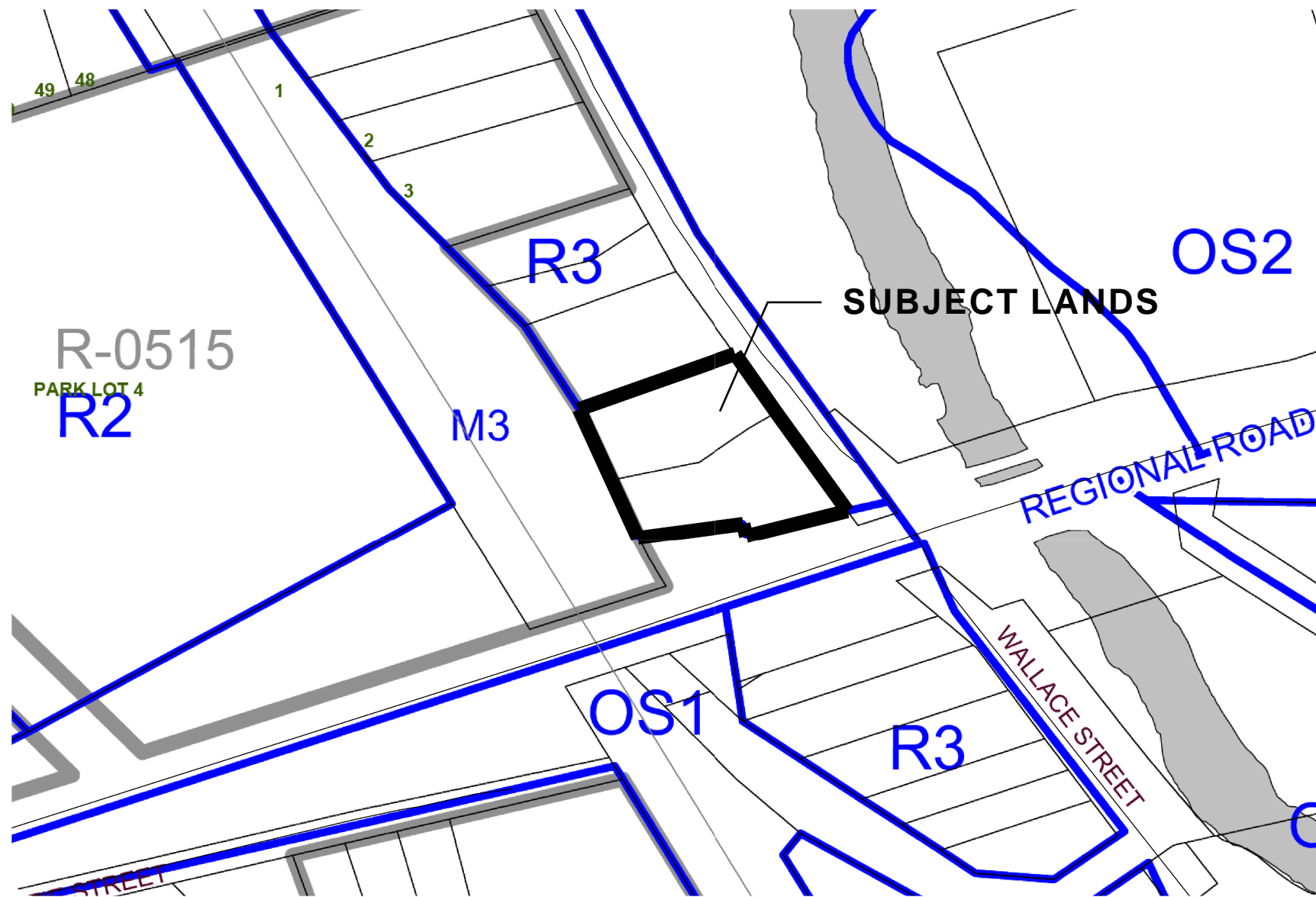
Woodbridge Centre Secondary Plan - Schedule 1 Policy Areas



**Subject Woodlot**  
 3 - Section 4.1.2.5,  
 Life Policy 1.1

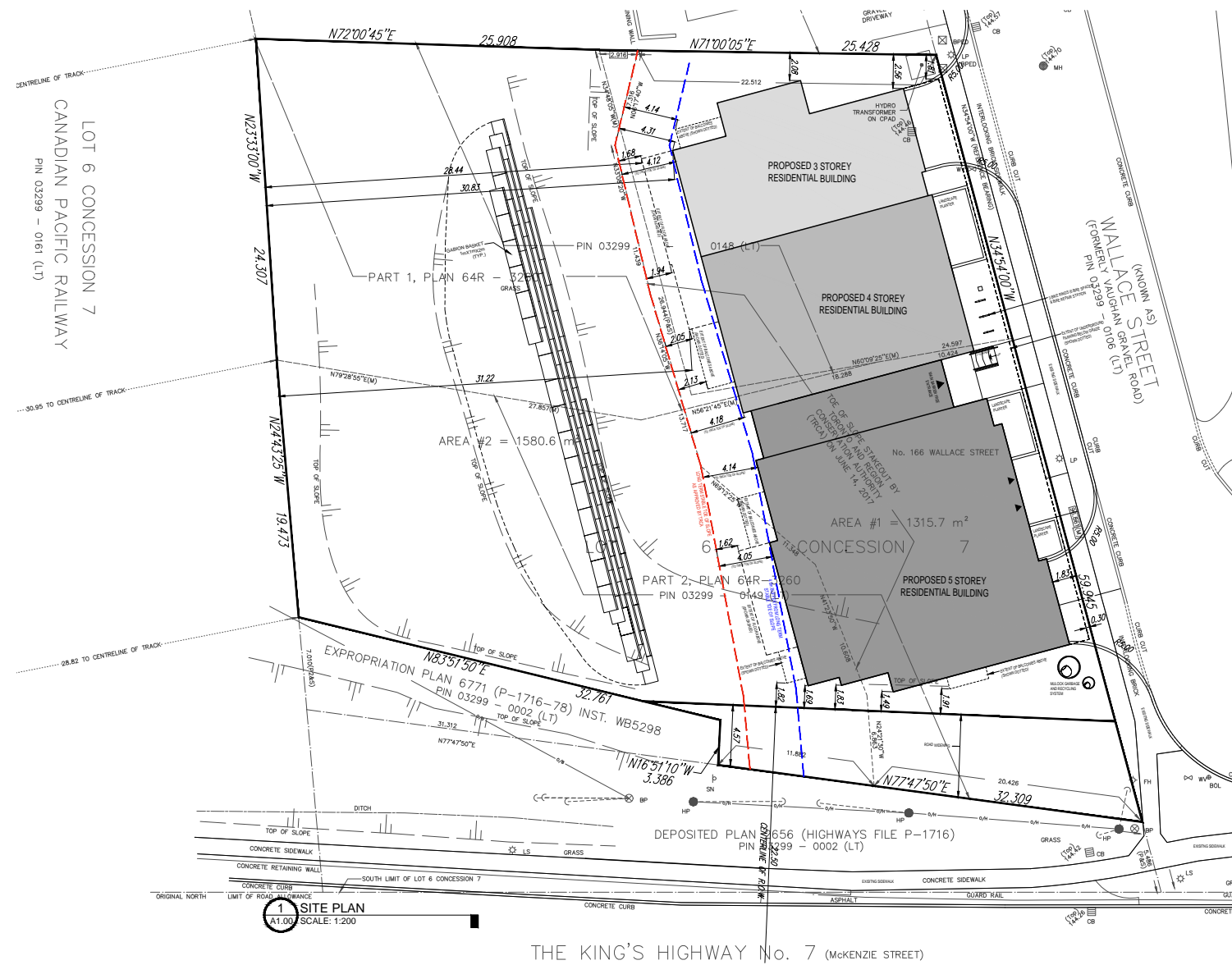
Woodbridge Centre Secondary Plan - Schedule 2 Land Use Plan

# POLICY CONTEXT - ZONING BY-LAW



City of Vaughan Zoning By-law 1-88 - Map 7B

# SITE PLAN



Site Plan Prepared by Pylons Architecture Inc.

# PROPOSED DEVELOPMENT RENDER



# Thank You

## Comments & Questions?

Kurt Franklin, BMath, MAES, MCIP, RPP  
Vice President, Weston Consulting  
905-738-8080 ext. 224  
kfranklin@westonconsulting.com

Darrin Cohen  
Planner, Weston Consulting  
905-738-8080 ext. 277  
dcohen@westonconsulting.com

