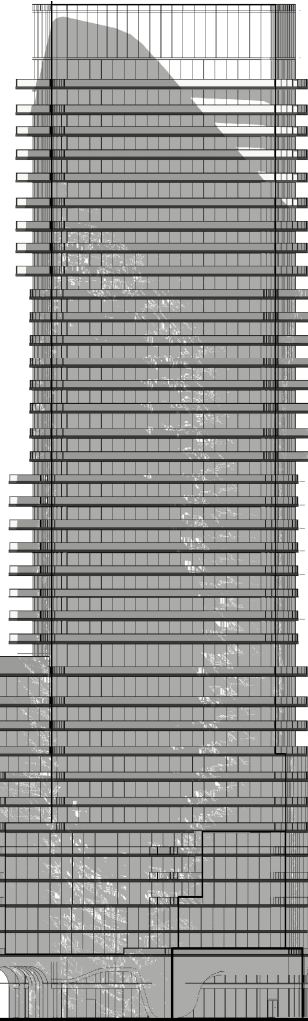
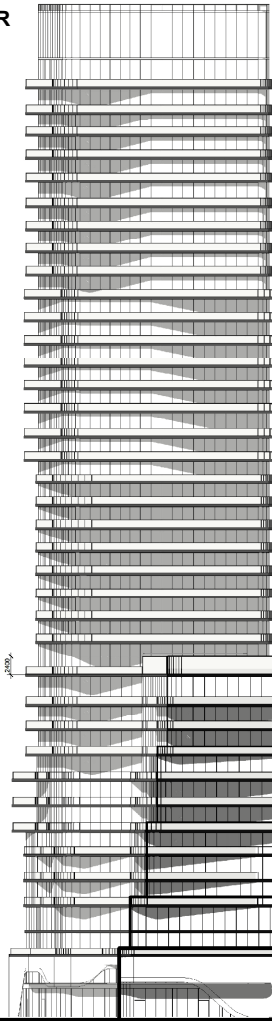


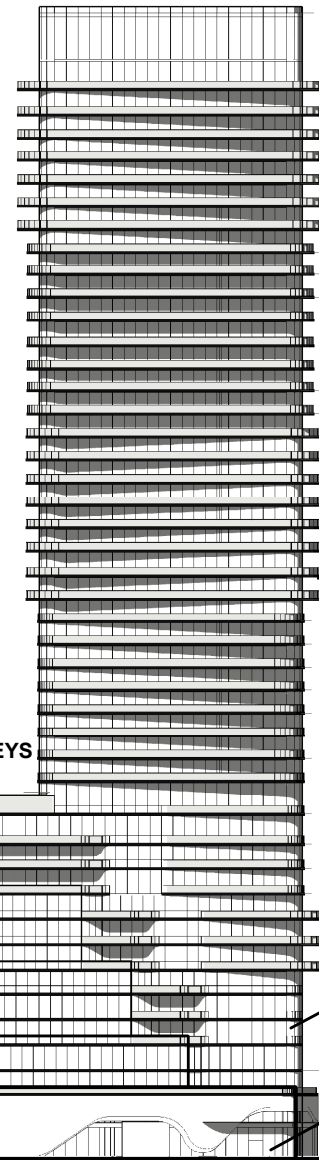
**SOUTH TOWER
44-STOREYS**



**NORTH TOWER
38-STOREYS**



**PODIUM
12-STOREYS**



**METAL
RAILINGS**

**GLASS AND
METAL
SPANDREL**

**METAL
PANELLING**

SOUTH ELEVATION (FACING PRIVATE ROAD / MEWS)

WEST ELEVATION (FACING INTERIM PRIVATE ROAD)

Not to Scale

Building Elevations - Building B (South and West)

LOCATION:

Part of Lot 26, Concession 1; 72 Steeles Avenue West
and 7040 and 7054 Yonge Street

APPLICANT:

72 Steeles Holdings Limited &
7040 Yonge Holdings Limited



Attachment

FILES:

OP.20.014, Z.20.038,
19T-20V007

DATE:

March 2, 2021

6