



1 BUILDING A - NORTH ELEVATION
SCALE: 1:100



2 BUILDING A - EAST ELEVATION
SCALE: 1:100

EXTERIOR ELEVATION NOTES

- REFER TO EXTERIOR FINISH SCHEDULE FOR COLOURS
- 1 ASPHALT SHINGLES. CERTAINTED. GRAND MANOR. GATE HOUSE SLATE. OR EQUIVALENT
 - 2 PRE-FINISHED FASCIA BOARD & SOFFIT. COLOUR MATCH TO SAVANNAH WICKER. OR EQUIVALENT
 - 3 HORIZONTAL SIDING. CERTAINEED. CEDARBOARDS INSULATED SIDING. 7" - SAVANNAH WICKER. OR EQUIVALENT
 - 4 WINDOW AND CORNER TRIM FOR SIDING. SAVANNAH WICKER COLOUR. OR EQUIVALENT
 - 5 BRICK VENEER EXTERIOR CLADDING. GLENGREY. SCOTCH TRADITIONAL HANDMADE. OVERSIZED. OR EQUIVALENT
 - 6 ACCENT BRICK VENEER DETAILING W/ 12.7mm PROJECTION. GLENGREY. SCOTCH TRADITIONAL HANDMADE. OVERSIZED. OR EQUIVALENT
 - 7 PRECAST CONCRETE. BUFF COLOUR. OR EQUIVALENT
 - 8 PRE-FINISHED FRIEZE/DENTAL BOARD. DUROCK STUCCO. COLOUR MATCH TO SAVANNAH WICKER. OR EQUIVALENT
 - 9 ALUMINUM CLAD. COLOUR MATCH TO SAVANNAH WICKER. OR EQUIVALENT
 - 10 PRE-FINISHED ALUMINUM RAILING WITH GLASS PANELS. BLACK COLOUR. OR EQUIVALENT
 - 11 PRE-FINISHED METAL RAILING. BLACK COLOUR. OR EQUIVALENT
 - 12 ALUMINUM WINDOW AND DOOR FRAMES. COMMERCIAL. BROWN COLOUR. OR EQUIVALENT
 - 13 ALUMINUM WINDOWS. DOORS AND PANELING. COMMERCIAL. BROWN COLOUR. OR EQUIVALENT
 - 14 ALUMINUM SHUTTERS. BUCHNER MANUF. LOUVERED SHUTTERS - 14" - BLACK COLOUR. OR EQUIVALENT

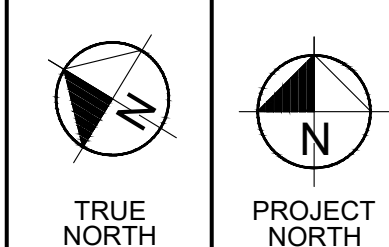
ISSUE TABLE		
01	JAN. 10, 20	ISSUED FOR COORDINATION
02	JAN. 21, 20	ISSUED FOR COORDINATION
03	FEB. 14, 20	ISSUED FOR DISCUSSION
04	MAR. 4, 20	ISSUED FOR REVIEW
05	APR. 3, 20	ISSUED SITE PLAN SUBMISSION
06	APR. 16, 20	REVISED & RE-ISSUED
07	MAY 11, 20	ISSUED FOR SPA #4
08	AUG 24, 20	REVISED PER TCA COMMENTS
09	SEPT 24, 20	REVISED FRONT LANDSCAPING
10	OCT 23, 20	ISSUED FOR SPA

ALL DIMENSIONS AND CONDITIONS TO BE VERIFIED ON SITE

THIS DRAWING IS OWNED BY IAN ROBERTSON DESIGN AND PYLONS ARCHITECTURE INC. (OR THEIR AFFILIATED OR RELATED COMPANIES) AND MAY NOT BE REPRODUCED, USED, DOWNLOADED, DISSEMINATED, PUBLISHED, OR TRANSFERRED IN ANY FORM OR BY ANY MEANS, EXCEPT WITH THE PRIOR WRITTEN CONSENT OF IAN ROBERTSON DESIGN AND PYLONS ARCHITECTURE INC. COPYRIGHT INFRINGEMENT IS A VIOLATION OF FEDERAL LAW SUBJECT TO CRIMINAL AND CIVIL PENALTIES.

THE CONTRACTOR IS TO VERIFY ALL DIMENSIONS AND CONDITIONS ON THE PROJECT AND TO REPORT ANY DISCREPANCIES TO THE ARCHITECT PRIOR TO COMMENCING WORK. THESE DRAWINGS ARE NOT TO BE USED FOR CONSTRUCTION PURPOSES UNLESS INDICATED BY THE ARCHITECT AS "ISSUED FOR CONSTRUCTION".

DO NOT SCALE DRAWINGS.



KLEINBURG MILLS INC.

MIXED USE DEVELOPMENT
10432 & 10422 ISLINGTON AVE.
CITY OF VAUGHAN

BUILDING A -
NORTH / EAST ELEVATIONS

Drawn By: PS/KR	Checked By: XX
Date: 19-19	Page: A3.00
Scale: AS NOTED	

ATTACHMENT 5

EXTERIOR ELEVATION NOTES

REFER TO EXTERIOR FINISH SCHEDULE FOR COLOURS

- 1 ASPHALT SHINGLES, CERTANTEED, GRAND MANOR, GATE HOUSE SLATE, OR EQUIVALENT
- 2 PRE-FINISHED FASCIA BOARD & SOFFIT, COLOUR MATCH TO SAVANNAH WICKER, OR EQUIVALENT
- 3 HORIZONTAL SIDING, CERTANTEED, CEDARBOARDS INSULATED SIDING, T- SAVANNAH WICKER, OR EQUIVALENT
- 4 WINDOW AND CORNER TRIM FOR SIDING, SAVANNAH WICKER COLOUR, OR EQUIVALENT
- 5 BRICK VENEER EXTERIOR CLADDING, GLENGREY, SCOTCH TRADITIONAL HANDMADE- OVERSIZED, OR EQUIVALENT
- 6 ACCENT BRICK VENEER DETAILING W/ 12.7mm PROJECTION, GLENGREY, SCOTCH TRADITIONAL HANDMADE- OVERSIZED, OR EQUIVALENT
- 7 PRECAST CONCRETE, BUFF COLOUR, OR EQUIVALENT
- 8 PRE-FINISHED FRIEZE/ DENTAL BOARD, DUROCK STUCCO, COLOUR MATCH TO SAVANNAH WICKER, OR EQUIVALENT
- 9 ALUMINUM CLAD, COLOUR MATCH TO SAVANNAH WICKER, OR EQUIVALENT
- 10 PRE-FINISHED ALUMINUM RAILING WITH GLASS PANELS, BLACK COLOUR, OR EQUIVALENT
- 11 PRE-FINISHED METAL RAILING, BLACK COLOUR, OR EQUIVALENT
- 12 ALUMINUM WINDOW AND DOOR FRAMES, COMMERCIAL, BROWN COLOUR, OR EQUIVALENT
- 13 ALUMINUM WINDOWS, DOORS AND PANELING, COMMERCIAL, BROWN COLOUR, OR EQUIVALENT
- 14 ALUMINUM SHUTTERS, BUCHNER MANUF. LOUVERED SHUTTERS - 14" - BLACK COLOUR, OR EQUIVALENT



1 BUILDING A - SOUTH ELEVATION
A3.01 SCALE: 1:100



2 BUILDING A - WEST ELEVATION
A3.01 SCALE: 1:100

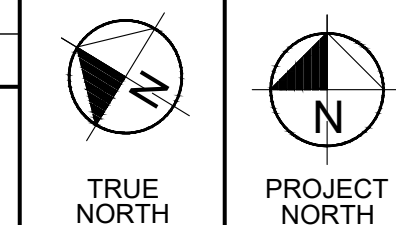
ISSUE TABLE		
01	JAN. 10, 20	ISSUED FOR COORDINATION
02	JAN. 21, 20	ISSUED FOR COORDINATION
03	FEB. 14, 20	ISSUED FOR DISCUSSION
04	MAR. 4, 20	ISSUED FOR REVIEW
05	APR. 3, 20	ISSUED SITE PLAN SUBMISSION
06	APR. 16, 20	REVISED & RE-ISSUED
07	MAY 11, 20	ISSUED FOR SPA #4
08	AUG 24, 20	REVISED PER TRCA COMMENTS
09	SEPT 24, 20	REVISED FRONT LANDSCAPING
10	OCT 23, 20	ISSUED FOR SPA

ALL DIMENSIONS AND
CONDITIONS TO BE VERIFIED ON
SITE

THIS DRAWING IS OWNED BY IAN ROBERTSON DESIGN AND PYLONS ARCHITECTURE INC. (OR THEIR AFFILIATED OR RELATED COMPANIES) AND MAY NOT BE REPRODUCED, USED, DOWNLOADED, DISSEMINATED, PUBLISHED, OR TRANSFERRED IN ANY FORM OR BY ANY MEANS, EXCEPT WITH THE PRIOR WRITTEN CONSENT OF IAN ROBERTSON DESIGN AND PYLONS ARCHITECTURE INC. COPYRIGHT INFRINGEMENT IS A VIOLATION OF FEDERAL LAW SUBJECT TO CRIMINAL AND CIVIL PENALTIES.

THE CONTRACTOR IS TO VERIFY ALL DIMENSIONS AND CONDITIONS ON THE PROJECT AND TO REPORT ANY DISCREPANCIES TO THE ARCHITECT PRIOR TO COMMENCING WORK. THESE DRAWINGS ARE NOT TO BE USED FOR CONSTRUCTION PURPOSES UNLESS INDICATED BY THE ARCHITECT AS "ISSUED FOR CONSTRUCTION".

DO NOT SCALE DRAWINGS.



KLEINBURG MILLS INC.

MIXED USE DEVELOPMENT
10432 & 10422 ISLINGTON AVE.
CITY OF VAUGHAN

BUILDING A-
SOUTH/ WEST ELEVATIONS

Drawn by: PS/KR	Checked by: XX
Date: 19-19	Page: A3.01
Scale: AS NOTED	

EXTERIOR ELEVATION NOTES

REFER TO EXTERIOR FINISH SCHEDULE FOR COLOURS

- 1 ASPHALT SHINGLES, CERTAINTED, GRAND MANOR, GATE HOUSE SLATE, OR EQUIVALENT
- 2 PRE-FINISHED FASCIA BOARD & SOFFIT, COLOUR MATCH TO SAVANNAH WICKER, OR EQUIVALENT
- 3 HORIZONTAL SIDING, CERTAINEED, CEDARBOARDS INSULATED SIDING, T- SAVANNAH WICKER, OR EQUIVALENT
- 4 WINDOW AND CORNER TRIM FOR SIDING, SAVANNAH WICKER COLOUR, OR EQUIVALENT
- 5 BRICK VENEER EXTERIOR CLADDING, GLENGREY, SCOTCH TRADITIONAL HANDMADE- OVERSIZED, OR EQUIVALENT
- 6 ACCENT BRICK VENEER DETAILING W/ 12.7mm PROJECTION, GLENGREY, SCOTCH TRADITIONAL HANDMADE- OVERSIZED, OR EQUIVALENT
- 7 PRECAST CONCRETE, BUFF COLOUR, OR EQUIVALENT
- 8 PRE-FINISHED FRIEZE/ DENTAL BOARD, DUROCK STUCCO, COLOUR MATCH TO SAVANNAH WICKER, OR EQUIVALENT
- 9 ALUMINUM CLAD, COLOUR MATCH TO SAVANNAH WICKER, OR EQUIVALENT
- 10 PRE-FINISHED ALUMINUM RAILING WITH GLASS PANELS, BLACK COLOUR, OR EQUIVALENT
- 11 PRE-FINISHED METAL RAILING, BLACK COLOUR, OR EQUIVALENT
- 12 ALUMINUM WINDOW AND DOOR FRAMES, COMMERCIAL BROWN COLOUR, OR EQUIVALENT
- 13 ALUMINUM WINDOWS, DOORS AND PANELING, COMMERCIAL BROWN COLOUR, OR EQUIVALENT
- 14 ALUMINUM SHUTTERS, BUCHNER MANUF. LOUVERED SHUTTERS - 14" - BLACK COLOUR, OR EQUIVALENT

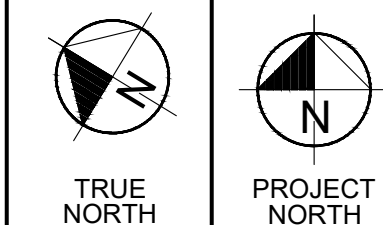
ISSUE TABLE		
01	JAN. 10, 20	ISSUED FOR COORDINATION
02	JAN. 21, 20	ISSUED FOR COORDINATION
03	FEB. 14, 20	ISSUED FOR DISCUSSION
04	MAR. 4, 20	ISSUED FOR REVIEW
05	APR. 3, 20	ISSUED SITE PLAN SUBMISSION
06	APR. 16, 20	REVISED & RE-ISSUED
07	MAY 11, 20	ISSUED FOR SPA #4
08	AUG 24, 20	REVISED PER TRCA COMMENTS
09	SEPT 24, 20	REVISED FRONT LANDSCAPING
10	OCT 23, 20	ISSUED FOR SPA

ALL DIMENSIONS AND CONDITIONS TO BE VERIFIED ON SITE

THIS DRAWING IS OWNED BY IAN ROBERTSON DESIGN AND PYLONS ARCHITECTURE INC. (OR THEIR AFFILIATED OR RELATED COMPANIES) AND MAY NOT BE REPRODUCED, USED, DOWNLOADED, DISSEMINATED, PUBLISHED, OR TRANSFERRED IN ANY FORM OR BY ANY MEANS, EXCEPT WITH THE PRIOR WRITTEN CONSENT OF IAN ROBERTSON DESIGN AND PYLONS ARCHITECTURE INC. COPYRIGHT INFRINGEMENT IS A VIOLATION OF FEDERAL LAW SUBJECT TO CRIMINAL AND CIVIL PENALTIES.

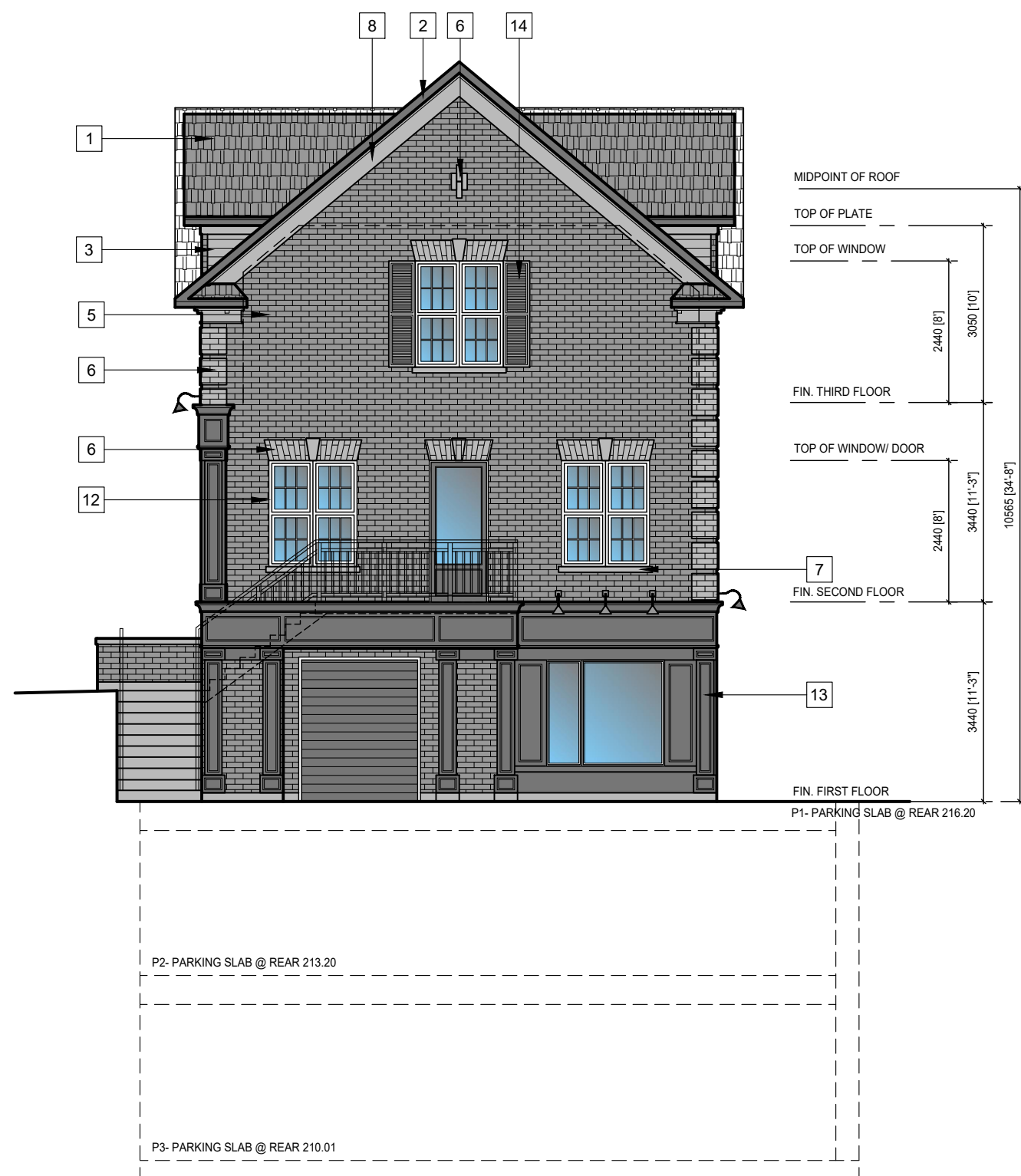
THE CONTRACTOR IS TO VERIFY ALL DIMENSIONS AND CONDITIONS ON THE PROJECT AND TO REPORT ANY DISCREPANCIES TO THE ARCHITECT PRIOR TO COMMENCING WORK. THESE DRAWINGS ARE NOT TO BE USED FOR CONSTRUCTION PURPOSES UNLESS INDICATED BY THE ARCHITECT AS "ISSUED FOR CONSTRUCTION".

DO NOT SCALE DRAWINGS.

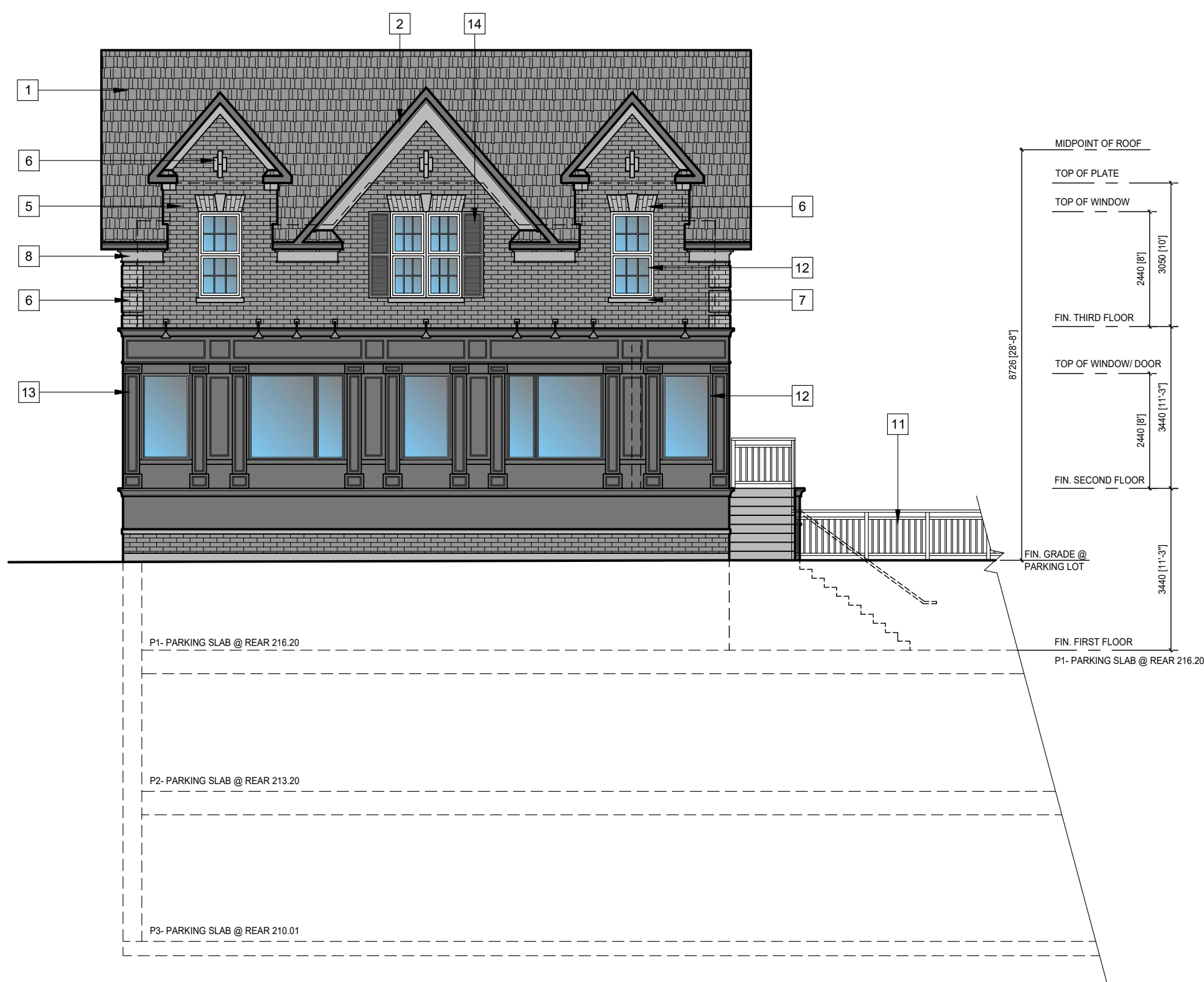


Client: KLEINBURG MILLS INC.
Project: MIXED USE DEVELOPMENT
10432 & 10422 ISLINGTON AVE.
CITY OF VAUGHAN

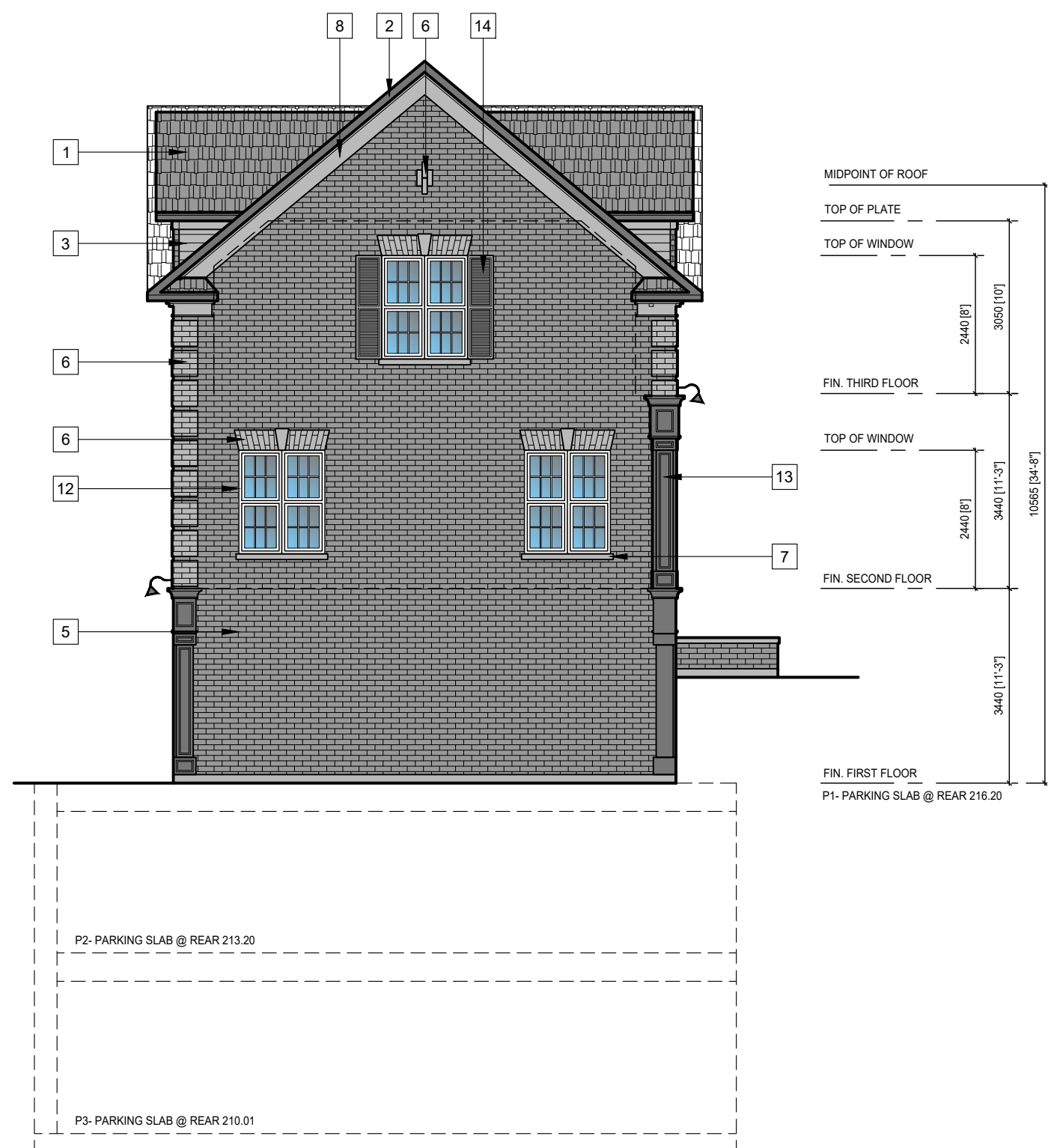
Sheet Title: BUILDING B ELEVATIONS
Drawn by: PS/KR
Checked by: XX
Date: 19-19
Scale: AS NOTED
Page: A3.02



1 BUILDING B - NORTH ELEVATION
A3.02 SCALE: 1:100



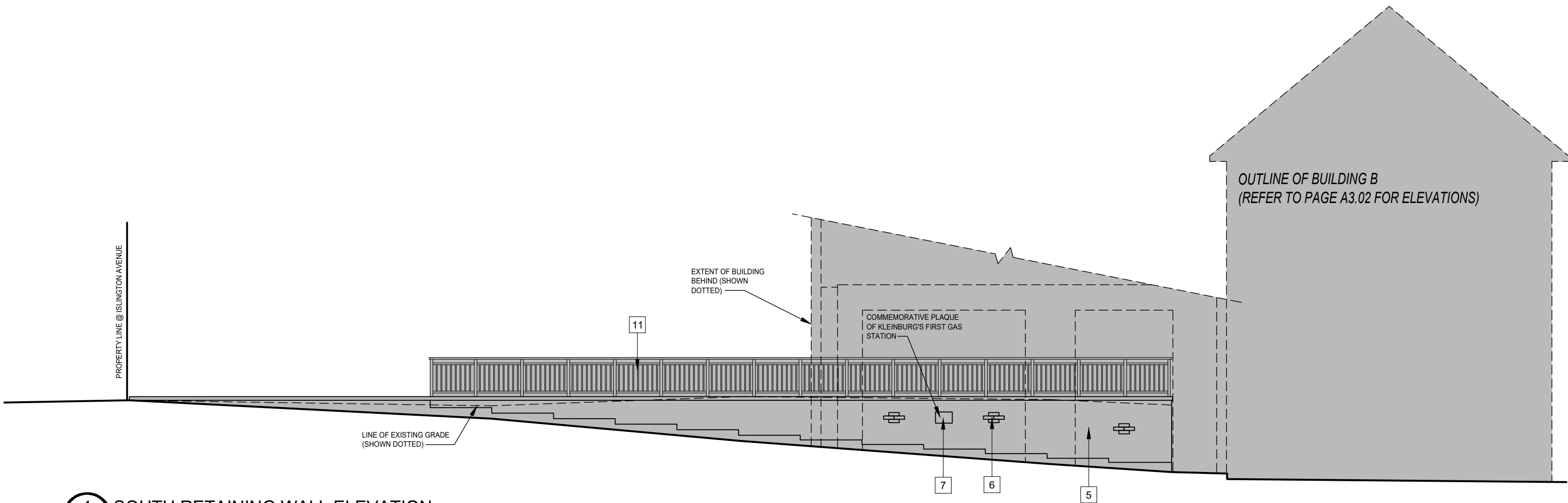
2 BUILDING B - EAST ELEVATION
A3.02 SCALE: 1:100



3 BUILDING B - SOUTH ELEVATION
A3.02 SCALE: 1:100



4 BUILDING B - WEST ELEVATION
A3.02 SCALE: 1:100



1 SOUTH RETAINING WALL ELEVATION
A4.00
SCALE: 1:100

EXTERIOR ELEVATION NOTES

- REFER TO EXTERIOR FINISH SCHEDULE FOR COLOURS
- 1 ASPHALT SHINGLES. CERTAINTED. GRAND MANOR. GATE HOUSE SLATE. OR EQUIVALENT
 - 2 PRE-FINISHED FASCIA BOARD & SOFFIT. COLOUR MATCH TO SAVANNAH WICKER. OR EQUIVALENT
 - 3 HORIZONTAL SIDING. CERTAINEED. CEDARBOARDS INSULATED SIDING. 7" - SAVANNAH WICKER. OR EQUIVALENT
 - 4 WINDOW AND CORNER TRIM FOR SIDING. SAVANNAH WICKER COLOUR. OR EQUIVALENT
 - 5 BRICK VENEER EXTERIOR CLADDING. GLENGREY. SCOTCH TRADITIONAL HANDMADE- OVERSIZED. OR EQUIVALENT
 - 6 ACCENT BRICK VENEER DETAILING W/ 12.7mm PROJECTION. GLENGREY. SCOTCH TRADITIONAL HANDMADE- OVERSIZED. OR EQUIVALENT
 - 7 PRECAST CONCRETE. BUFF COLOUR. OR EQUIVALENT
 - 8 PRE-FINISHED FRIEZE/ DENTAL BOARD. DUROCK STUCCO. COLOUR MATCH TO SAVANNAH WICKER. OR EQUIVALENT
 - 9 ALUMINUM CLAD. COLOUR MATCH TO SAVANNAH WICKER. OR EQUIVALENT
 - 10 PRE-FINISHED ALUMINUM RAILING WITH GLASS PANELS. BLACK COLOUR. OR EQUIVALENT
 - 11 PRE-FINISHED METAL RAILING. BLACK COLOUR. OR EQUIVALENT
 - 12 ALUMINUM WINDOW AND DOOR FRAMES. COMMERCIAL. BROWN COLOUR. OR EQUIVALENT
 - 13 ALUMINUM WINDOWS, DOORS AND PANELING. COMMERCIAL. BROWN COLOUR. OR EQUIVALENT
 - 14 ALUMINUM SHUTTERS. BUCHNER MANUF. LOUVERED SHUTTERS - 14" - BLACK COLOUR. OR EQUIVALENT



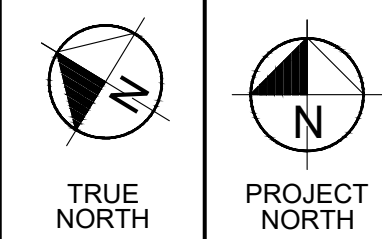
ISSUE TABLE		
01	JAN. 10, 20	ISSUED FOR COORDINATION
02	JAN. 21, 20	ISSUED FOR COORDINATION
03	FEB. 14, 20	ISSUED FOR DISCUSSION
04	MAR. 4, 20	ISSUED FOR REVIEW
05	APR. 5, 20	ISSUED SITE PLAN SUBMISSION
06	APR. 16, 20	REVISED & RE-ISSUED
07	MAY 11, 20	ISSUED FOR SPA #4
08	AUG 24, 20	REVISED PER TRCA COMMENTS
09	SEPT 24, 20	REVISED FRONT LANDSCAPING
10	OCT 23, 20	ISSUED FOR SPA

ALL DIMENSIONS AND CONDITIONS TO BE VERIFIED ON SITE

THIS DRAWING IS OWNED BY IAN ROBERTSON DESIGN AND PYLONS ARCHITECTURE INC. (OR THEIR AFFILIATED OR RELATED COMPANIES) AND MAY NOT BE REPRODUCED, USED, DOWNLOADED, DISSEMINATED, PUBLISHED, OR TRANSFERRED IN ANY FORM OR BY ANY MEANS, EXCEPT WITH THE PRIOR WRITTEN CONSENT OF IAN ROBERTSON DESIGN AND PYLONS ARCHITECTURE INC. COPYRIGHT INFRINGEMENT IS A VIOLATION OF FEDERAL LAW SUBJECT TO CRIMINAL AND CIVIL PENALTIES.

THE CONTRACTOR IS TO VERIFY ALL DIMENSIONS AND CONDITIONS ON THE PROJECT AND TO REPORT ANY DISCREPANCIES TO THE ARCHITECT PRIOR TO COMMENCING WORK. THESE DRAWINGS ARE NOT TO BE USED FOR CONSTRUCTION PURPOSES UNLESS INDICATED BY THE ARCHITECT AS "ISSUED FOR CONSTRUCTION".

DO NOT SCALE DRAWINGS.



Client: KLEINBURG MILLS INC.

Project: MIXED USE DEVELOPMENT
10432 & 10422 ISLINGTON AVE.
CITY OF VAUGHAN

Sheet Title: PARTIAL ELEVATIONS

Drawn by: PS/KR	Checked by: XX
No: 19-19	Page: A4.00
Scale: AS NOTED	