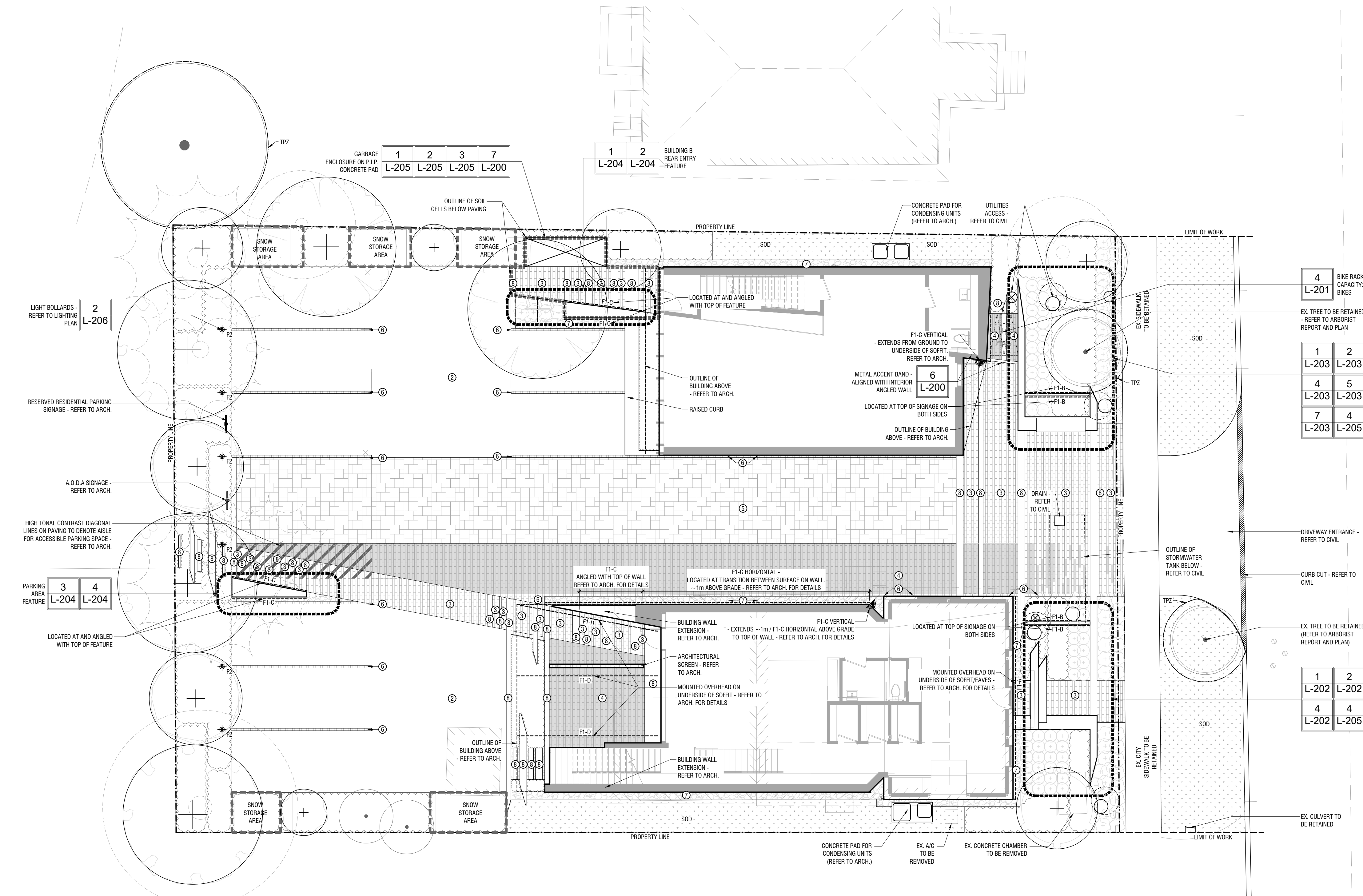


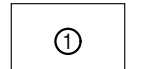
GENERAL NOTES

1. All dimensions in millimetres (mm)
2. Verify all dimensions
3. Do not scale drawings
4. Check drawings against specifications
5. Use the latest revised drawings only
6. Report any discrepancies to the Landscape Architect before proceeding
7. Drawings and specifications are the property of the Landscape Architect, and must be returned upon completion of the work

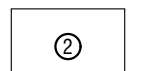
ATTACHMENT 8



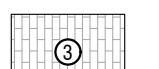
LEGEND - PAVING



N/A



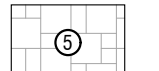
Heavy-Duty Asphalt  
SRI <29  
Recycled Content: ~24%



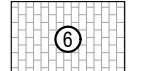
Unit Paving - Light Grey  
"Industrial" by Techo-Bloc - Random mix of:  
70% of "Greyed Nickel" - Polished Finish  
• Size: 600 L x 100 W x 98 D (mm)  
30% of "Greyed Nickel" - Granite Finish  
• Size: 300 L x 100 W x 98 D (mm)  
Pattern: Random Running Bond, in direction  
shown on plan  
SRI 35  
Recycled Content: None



Unit Paving - Dark Grey  
"Industrial" by Techo-Bloc - Random mix of:  
60% of "Char Grey" - Granite Finish  
• Size: 600 L x 100 W x 98 D (mm)  
40% of "Onyx Black" Granite Finish  
• Size: 300 L x 100 W x 98 D (mm)  
Pattern: Random Running Bond, in direction  
shown on plan  
SRI <29  
Recycled Content: None



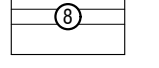
Unit Paving  
"Eco-Phos" by Unilock - Permeable Installation  
Colour: "Opal Blend"  
Size: 240 L x 120 W x 80 D (mm)  
Pattern: "Pattern HF" as per manufacturer  
SRI 34



Granite Setts  
SRI Not Available  
Recycled Content: None



Decorative Gravel  
"Mexican Beach Black Pebbles" by Mar-Co  
Stone or approved alternative  
50-75mm Dia.  
150mm (min.) depth over Filter Cloth



Flush P.I.P. Concrete Accent Band  
SRI: 35



Sod

LEGEND - EXISTING TREES



Ex. Deciduous Tree  
to be Retained \*\*



Ex. Deciduous Tree to  
be Removed \*\*



Ex. Coniferous Tree to  
be Removed \*\*



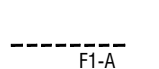
Minimum Tree  
Protection Zone (TPZ)  
\*\*



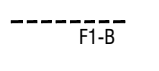
TPZ

\*\*Refer to Tree Preservation Plan and Arborist Report  
prepared by Central Tree Care Ltd.

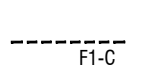
LEGEND - LIGHTING



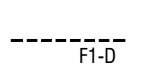
LED Strip Light  
Mounted to underside of heritage building soffit/eaves  
(refer to arch.)



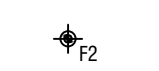
LED Strip Light  
Mounted to top of signage



LED Strip Light  
Mounted to building or landscape features as  
noted on plan.  
Refer to arch. for building-mounted locations.



LED Strip Light  
Mounted to underside of soffit.  
Refer to arch. for details



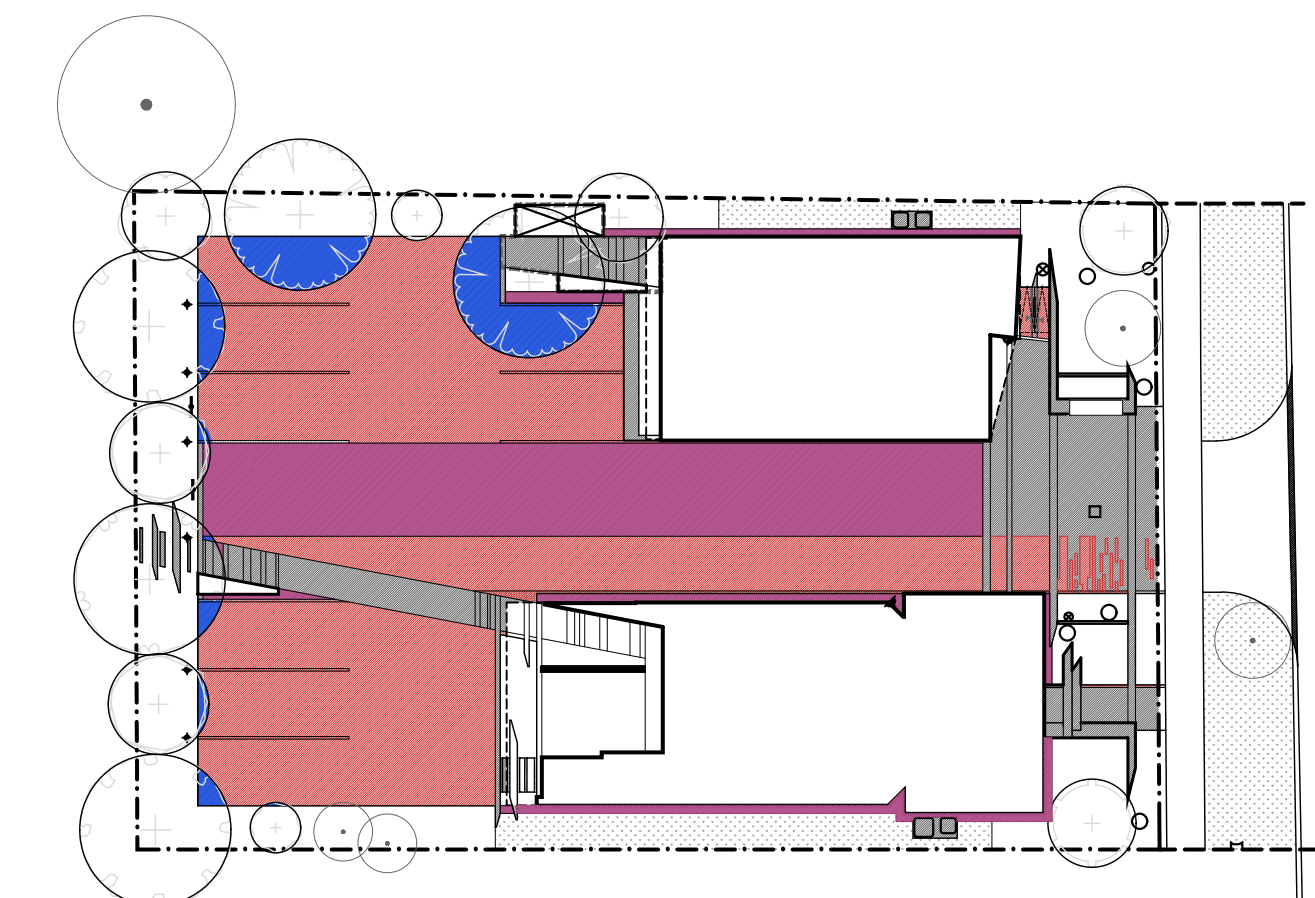
Light Bollards

1 LANDSCAPE PLAN

L-100

1:100

P-CO-374-01



LEGEND - HEAT ISLAND TREATMENT



Untreated Area



High-Albedo Paving  
(Refer to Paving Legend  
for specific SRI Values)



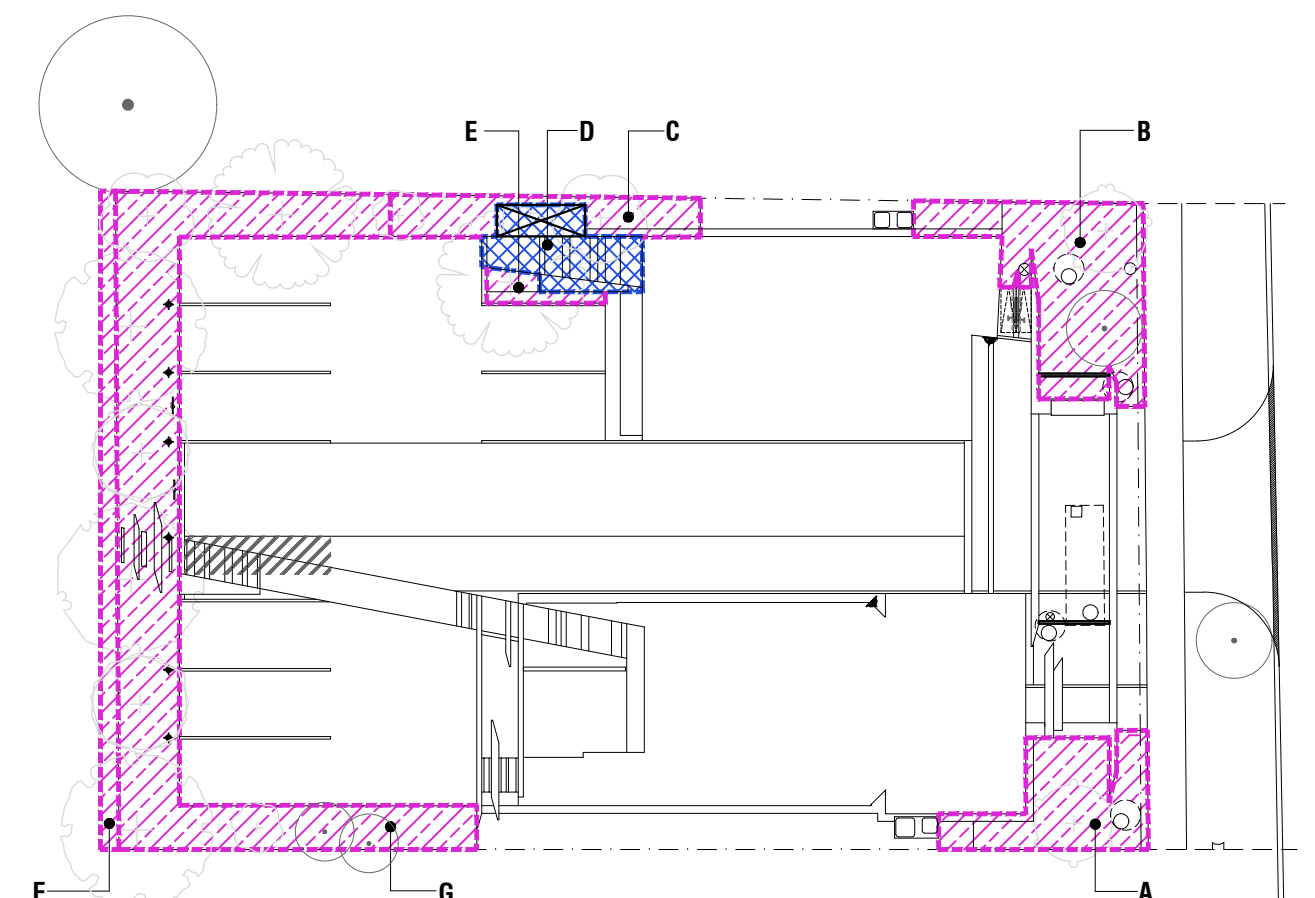
Pervious Paving



Shade from Trees

HEAT ISLAND TREATMENT CALCULATIONS		
TYPE	AREA (m <sup>2</sup> )	% of Area
Untreated Area	258.7	49.1
<b>TOTAL UNTREATED</b>	<b>258.7</b>	<b>49.1</b>
Hi-Albedo Paving	100.6	19.1
Pervious Paving	137.9	26.2
Shade from Trees	29.5	5.6
<b>TOTAL TREATED</b>	<b>268.0</b>	<b>50.9</b>

RECYCLED CONTENT - LANDSCAPE PAVING				
TYPE	AREA (m <sup>2</sup> )	% RECYCLED CONTENT	WEIGHTED RECYCLED CONTENT	% RECYCLED CONTENT
Concrete	49.6	25	2.2	
Asphalt	212.9	24	9.1	
Unit Paving (Unilock)	114.5	54	11.0	
Other	188.2	0	0.0	
<b>TOTAL</b>	<b>565.2</b>	<b>0</b>	<b>22.3</b>	



3 SOIL VOLUMES - KEY PLAN

L-100

1:300

P-CO-374-03

SOIL VOLUME CALCULATIONS						
	TYPE	AREA (m <sup>2</sup> )	DEPTH (m)	VOLUME	SUBTOTAL	# of TREES
A	Open Planting Bed	25.0	1.50	37.50	37.50	1
B	Open Planting Bed	40.9	1.50	61.35	61.35	2
C	Open Planting Bed	15.3	1.50	22.95		
D	Soil Cells	16.4	1.10	18.04		
E	Open Planting Bed	3.9	1.50	5.85	46.84	2
F	Open Planting Bed *On adjacent R.O.W.*	17.4	1.50	26.10		
G	Open Planting Bed	99.7	1.50	149.55	175.65	8
TOTAL SOIL VOLUME PROVIDED						

3 FEB.26.2020 Issued for SPA  
2 MAR.11.2019 Issued for SPA  
1 JAN.28.2019 Concept Design

REV DATE DESCRIPTION INITIAL

Landscape Plan

DRAWN BY: AAM  
CHECKED BY: JVV  
PRINT DATE: Jul.07.2020

46 Centre Street

Thornhill, ON L4J 1E9 (City of Vaughan)  
1846057 Ontario Inc & BLK Sheep

LAD-374  
JAN.28.2019

SCALE AS NOTED

L-100