


PROJECT:

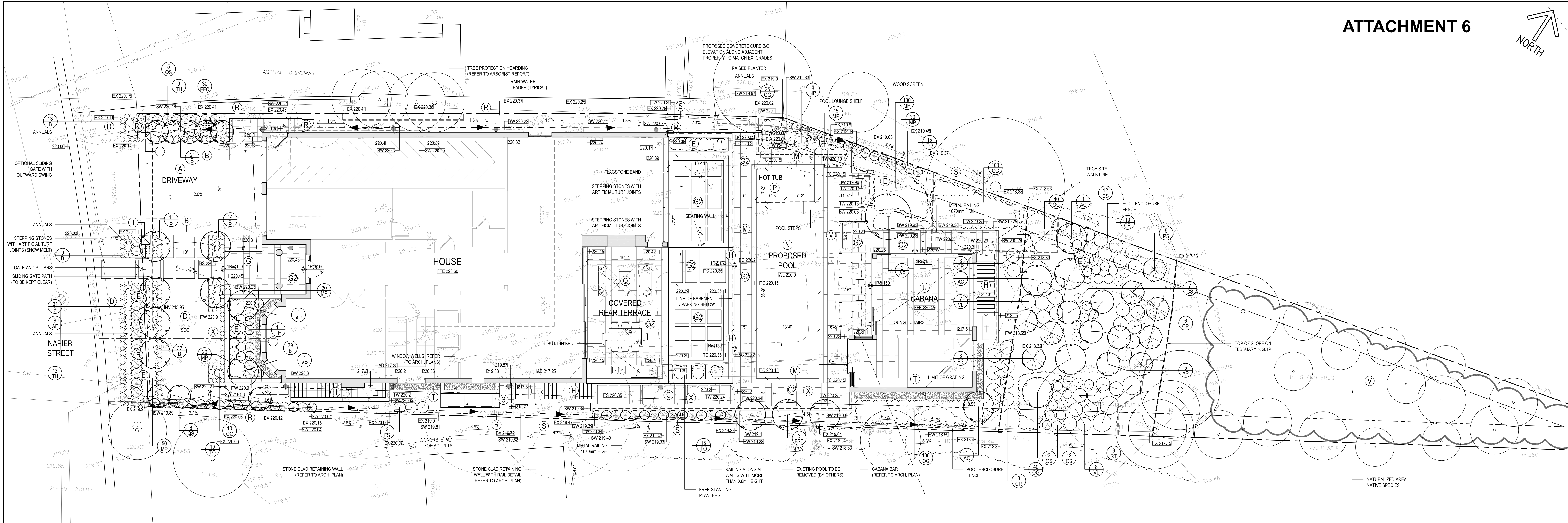
S GUGLIETTI  
RESIDENCE

45 NAPIER STREET, KLEINBERG, ONTARIO

LANDSCAPE PLAN

SCALE:	DATE:
1/8"=1'-0"	AUG 25th, 2020

PROJECT NUMBER:	DRAWING NO:
ISSUED FOR:	L-1
Resubmission SPA	



**A Concrete Paved Driveway (Limestone Finished, Snow Melt) (Refer to Detail 5/1.3)**

**B Driveway Banding and Feature Paved Areas (Snow Melt) (Refer to Detail 5/1.3)**  
Ebony black granite from Global Arch or approved equal. Plank running bond pattern  
18" x 36" x 1 1/4" set on a 6" reinforced concrete slab over 6" of compacted granular

**C Stepping Stones with Artificial Turt Joints**  
Ebony black granite from Global Arch or approved equal. Plank stepping stones set on  
6" reinforced concrete slab over 6" of compacted granular

**D Open Sodded Areas**  
No. 1 Bluegrass set on 6" of screened topsoil

**E Proposed Planting Beds**  
18" of triple mix topped with 3" of finely shredded Gro Bark or approved equal

**G Flagstone Paving (Terraces and Landings) (Refer to Detail 3/L3)**  
Type: Sandblasted upper algonquin  
Size: 24" x 24" x 1 1/4"  
Supplier: Base Stone  
Pattern: Running Bond  
Colour: Light buff  
1 1/4" thick flagstone installed 1/2" mortar bed on 6" reinforced slab.

**G2 Flagstone Paving on Architectural Terraces and Landings (Refer to Detail 4/L3)**  
Type: Sandblasted upper algonquin  
Size: 16" x 32" x 1 1/2"  
Supplier: Base Stone  
Pattern: Running Bond  
Colour: Light buff  
1 1/2" thick flagstone installed 1/2" mortar bed on architectural concrete terrace.

**H Stone Clad Steps (Refer to Detail 1/L1.3)**  
Type: Cut Sandblasted Algonquin  
Size: 3" thick  
Supplier: Base Stone  
Colour: Light buff  
Stone to be set on concrete footings 4" deep

**I Stone Clad Pillars (1500mm high) (Refer to Detail 4/L2)**  
Cut Algonquin stone clad walls with Cut Algonquin coping. Wall construction to be 4"  
frost free footings.

- K Free Standing BBQ**
- L Swimming Pool Terrace (Refer to Detail 6/L3)**
- Type: Sandblasted upper algonquin
- Size: 16" x 32" x 1 1/2"
- Supplier: Base Stone
- Pattern: Running Bond
- Colour: Light buff
- 1 1/2" thick flagstone installed 1/2" setting bed on 6" compacted granular
- M Stone Pool Coping**
- Type: Sandblasted upper algonquin
- Size: 12" x 4" x 3" thick
- Supplier: Base Stone
- Colour: Light buff
- Mortared installation on existing concrete pool wall.
- N Swimming Pool**
- Gunite concrete pool construction with light grey marbleite and 12" wide water line porcelain tile.(Sandblasted upper algonquin)
- P Hot Tub**
- Gunite concrete pool construction with light grey marbleite and 12" wide water line porcelain tile. (Sandblasted upper algonquin)
- Q Lounge/Loggia Area**
- Refer to architectural drawings
- R Metal Fence (1500mm high)**
- S Property Line Fence (Wood) (Refer to Detail 2/L2)**
- 6" high wood fence. All wood members to be pressure treated and stained with 2 coats of opaque charcoal grey stain
- T Pea Gravel Surface Treatment (Refer to Detail 2/L3)**
- U Cabana**
- Refer to architectural plans
- V Naturalized Planting Area**
- X Proposed Garden Retaining Wall (Refer to Detail 3/L2)**
- Stone clad on concrete. Refer to detail

AREAS OF NEW EXCAVATION AROUND THE PERIMETER OF THE BUILDING ARE TO BE BACKFILLED USING ENGINEERED BACKFILL (CLEAN DRAINABLE FILL) H.P.B. OR APPROVED EQUAL.

PRIOR TO CONSTRUCTION THE LANDSCAPE ARCHITECT IS TO REVIEW THE SITE TO ENSURE THAT THE TREE PRESERVATION MEASURES HAVE BEEN IMPLEMENTED AS PER THE SPECIFICATIONS.

CONTRACTOR IS TO ENSURE INSTALLATION STANDARDS MEET MANUFACTURERS RECOMMENDATIONS AS NOT TO AFFECT PRODUCT WARRANTY

CONTRACTOR IS TO PROVIDE COMPACTION TESTING OF BACKFILLED AREAS FOR REVIEW BY THE CLIENT AND LANDSCAPE ARCHITECT PRIOR TO THE COMMENCEMENT OF LANDSCAPE CONSTRUCTION

**PLANTING BED NOTE:**  
- ALL SHARED PLANTING BEDS WITH PROPOSED TREES REQUIRE TREES TO HAVE ACCESS TO 20 SQ. M. OF GOOD QUALITY TOPSOIL.



Symbol	Qty	Botanical/Common Name	Root	Size	Remarks	Symbol	Qty	Botanical/Common Name	Root	Size	Remarks
<b>Deciduous Trees</b>						<b>Deciduous Shrubs</b>					
AC	03	Amelanchier laevis Downy Serviceberry	Potted	1.2m high	Multistem 3 stems	CR	27	Cornus racemosa Gray Dogwood	Potted	60cm	clump
AF	08	Acer freemanii Freeman Maple	WB	60mm cal.		CS	31	Cornus sericea Red Osier Dogwood	Potted	60cm	
AP	02	Acer palmatum 'Bloodgood' Bloodgood Japanese Maple	WB	60mm cal.	Specimen Low Branching clump	FS	03	Fagus sylvatica European Beech	BB	2m high	Hedging
AR	05	Acer rubrum Red Maple	WB	60mm cal.		HA	09	Hydrangea arborescens 'Annabelle' Annabelle Hydrangea	Potted	60cm	
FSC	03	Fagus sylvatica 'fastigiata' Columnar Beech	WB	60mm cal.		HP	04	Hydrangea paniculata 'Limelight' Limelight Hydrangea	Potted	60cm	
QS	14	Quercus robur x alba 'crimschmidt' Crimson Spire Oak	WB	60mm cal.		RT	03	Rhus typhina Staghorn Sumac	Potted	60cm	
<b>Evergreen Trees</b>						VL	15	Viburnum lentago Nannyberry	Potted	60cm	
PS	05	Pinus strobus White Pine	Potted	2.0m high		<b>Perennials</b>					
<b>Evergreen Shrubs</b>						MP	235	Native Mixed Perennials Detail Locations of the following To Be Determined at a later date	Potted	150mm	
TH	33	Taxus media 'Hilli' Hills Yew	Potted	80cm		<b>Ornamental Grasses</b>					
TO	49	Thuja occidentalis White Cedar	Potted	1.5m high	Nursery Grown	OG	315	Native Ornamental Grasses Detail Location of the following To Be Determined at a later date	Potted	150mm	
<b>Broadleaf Evergreen Shrubs</b>											
B	175	Buxus 'Green Mountain' Green Mountain Boxwood	Potted	45cm							
EFC	30	Euonymus fortunei 'Coloratus' Wintercreeper Euonymus(300mm dia)	Potted	45cm							