

ATTACHMENT 6

APPLICATION NUMBER: DA-17-042

APPLICATION NUMBER:

NOTES:
THIS DRAWING IS AN INSTRUMENT OF SERVICE, IS PROVIDED BY AND IS THE PROPERTY OF 4 ARCHITECTURE INC.
THE CONTRACTOR MUST VERIFY AND ACCEPT RESPONSIBILITY FOR ALL DIMENSIONS AND CONDITIONS ON SITE, AND MUST NOTIFY 4 ARCHITECTURE INC. OF ANY VARIATION FROM THE SUPPLIED INFORMATION.
4 ARCHITECTURE INC. IS NOT RESPONSIBLE FOR THE ACCURACY OF SURVEY, STRUCTURAL, MECHANICAL, ELECTRICAL, ETC., ENGINEERING INFORMATION SHOWN ON THIS DRAWING. REFER TO THE PROPER ENGINEERING DRAWINGS BEFORE PROCEEDING WITH THE WORK.
CONSTRUCTION MUST CONFORM TO ALL APPLICABLE CODES AND REQUIREMENTS OF AUTHORITIES HAVING JURISDICTION.
ALL ARCHITECTURAL SYMBOLS INDICATED ARE GRAPHIC REPRESENTATIONS ONLY.
DRAWINGS ARE NOT TO BE SCALED.

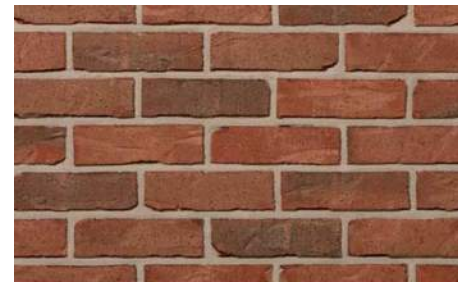
C:\Users\MDark\Documents\215067 - PORTSIDE MDark.rvt 12/11/2019 11:59:23 AM

MATERIAL LEGEND

BLOCK WALL (RETAINING WALL)
COLOR: GRAY
MANUF.: BRAMPTON BRICK



STANDARD BRICK
COLOR: GIBSON
MANUF.: BRAMPTON BRICK



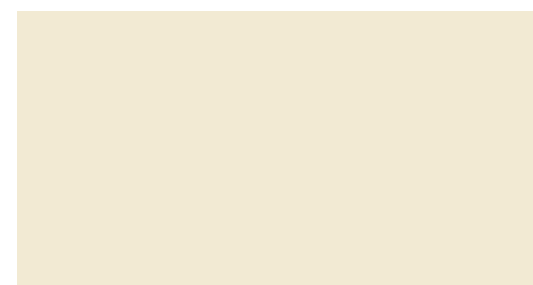
HORIZONTAL CEDAR MILL LAP SIDING
COLOR: WOODSTOCK BROWN
MANUF.: JAMES HARDIE



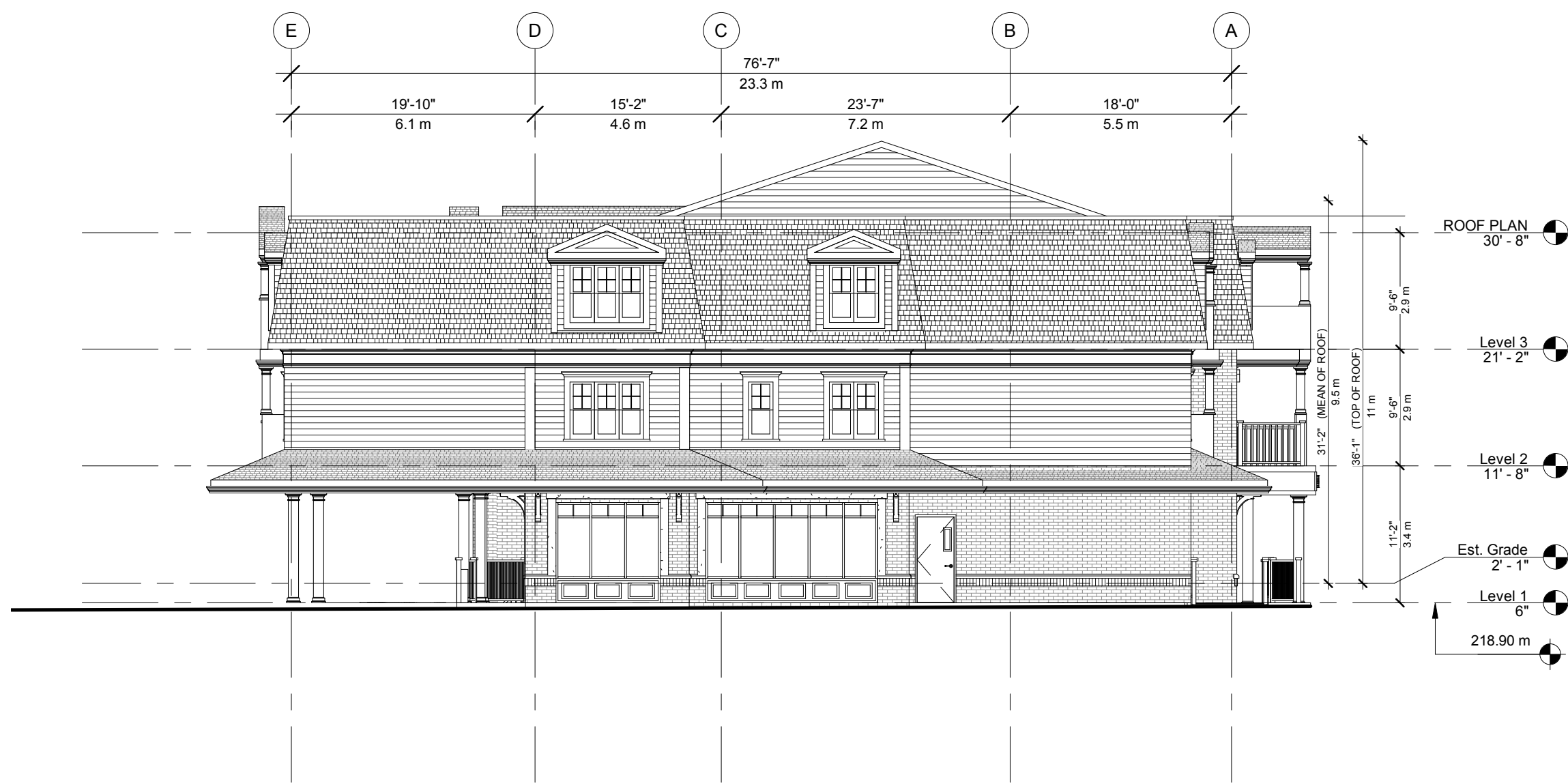
SHAKES
COLOR: SLATE GRAY
MANUF.: TBD



TRIM BOARD
COLOR: SW 7557 - SUMMER WHITE
MANUF.: JAMES HARDIE



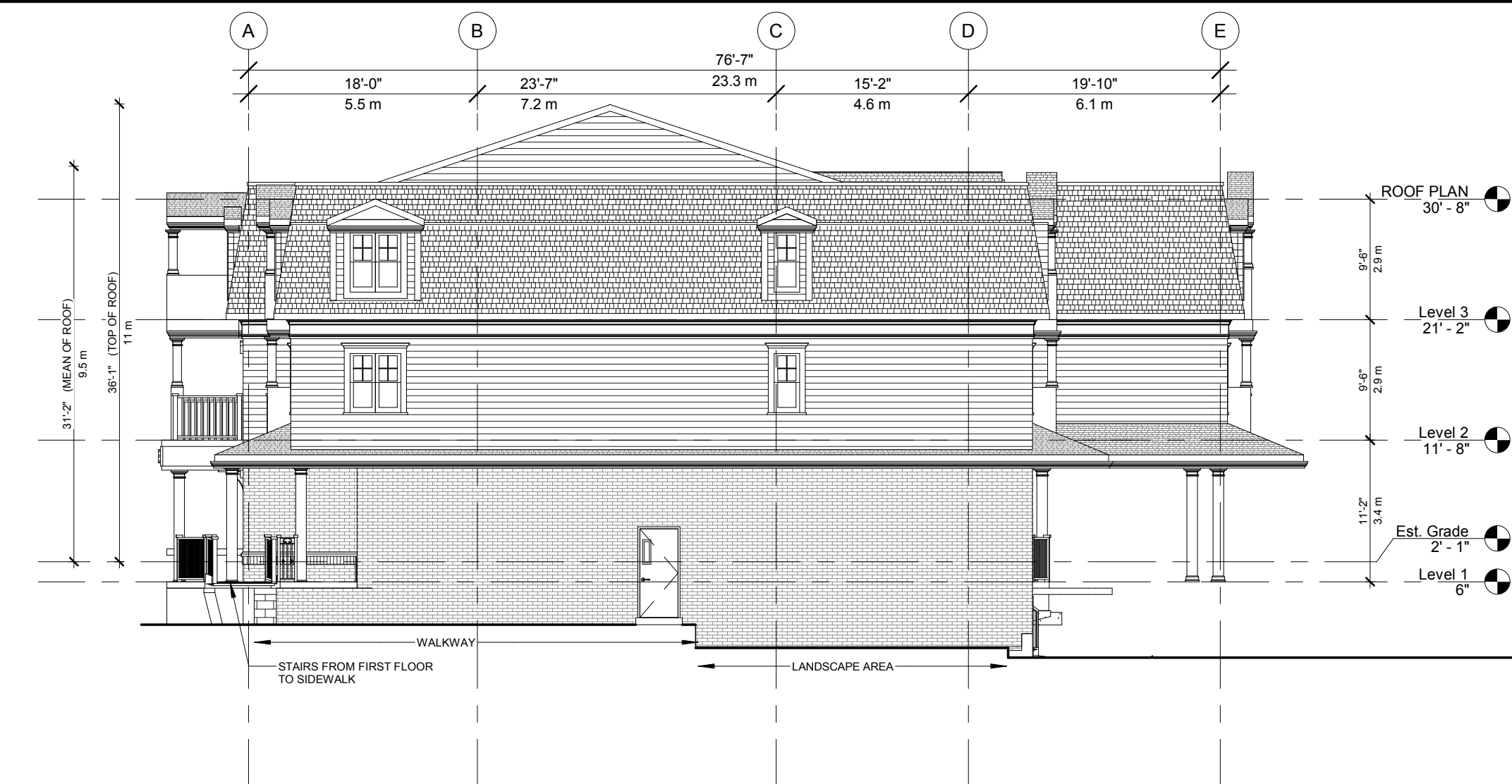
MATERIAL LEGEND
1 : 50



4 ELEVATION - EAST
A2.0 3/32" = 1'-0"



02 ELEVATION - NORTH
A2.0 3/32" = 1'-0"



3 ELEVATION - WEST
A2.0 3/32" = 1'-0"



01 ELEVATION - SOUTH
A2.0 3/32" = 1'-0"

REVISIONS		

SUBMITTALS		
10.		
9.		
8.		
7.		
6.		
5.		
4.		
3.		
2.	ISSUED FOR SITE PLAN APPROVAL	2019.11.12 DG
1.	ISSUED FOR SITE PLAN APPROVAL	2017.08.17 DG
No.	Description	YYYY.MM.DD By

NORTH:

STAMP:

4 ARCHITECTURE INC.
8966 Woodbine Avenue, Suite 300, Markham, ON L3R 0J7
T. (905) 470 7212 / F. (905) 737 7326 email: mail@4architecture.ca

PORTSIDE DEVELOPMENT 215067		
MATERIALS PALETTE		
2019.11.12	Drawn By MD	Checked By DG
As indicated	MD	DG
File Number 215067 - PORTSIDE.rvt	A2.0	