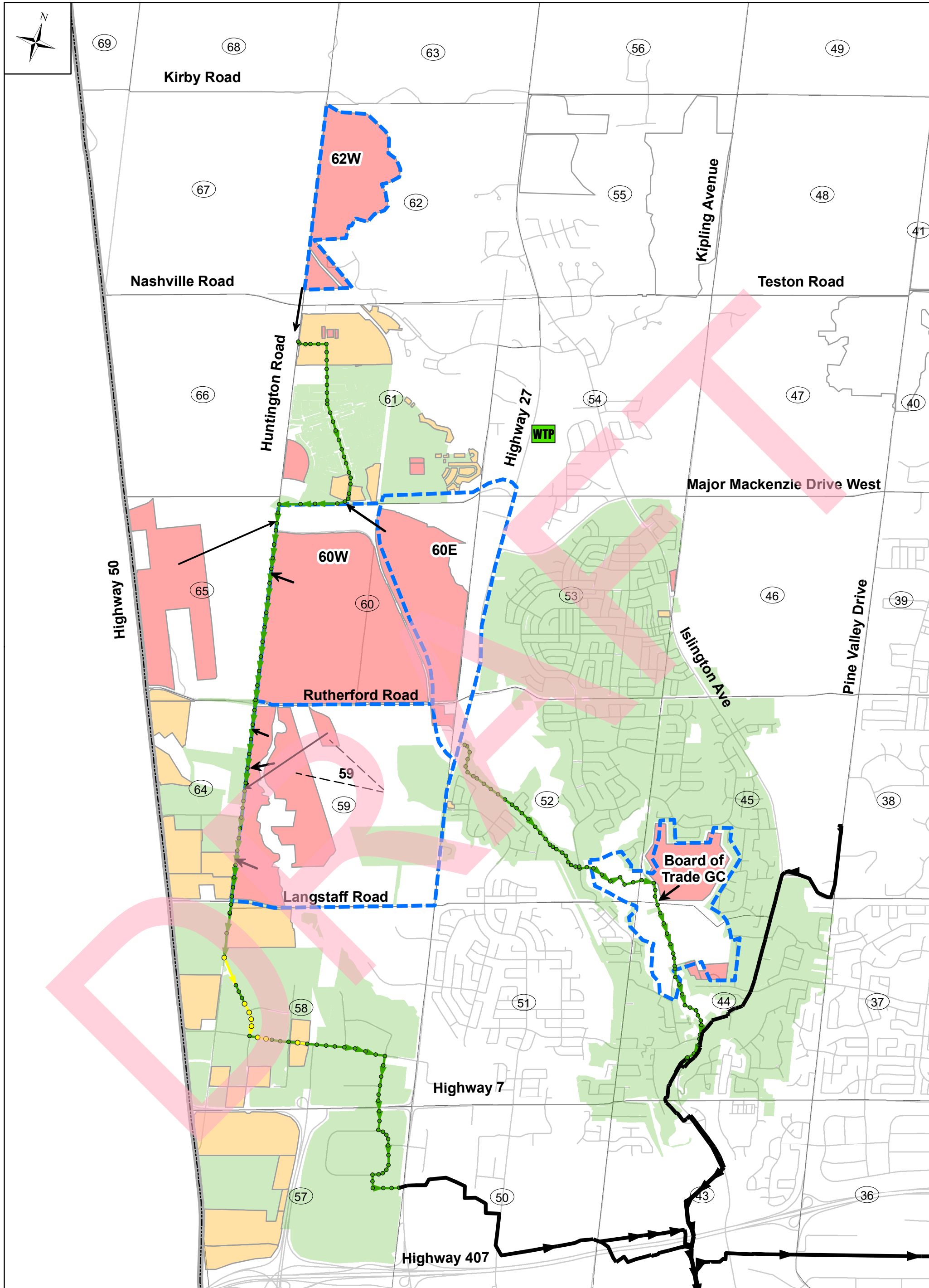




Table 8-1. Proposed Risk Management Measures

Study Area	Risk Management Measures						
	Flow Monitoring	SIP	CCTV	I&I Reduction	Phasing	Flow Attenuation	Pipe Replacement
West Vaughan							
Block 62W	Yes	Yes	Yes	Yes	Yes	No	No
Block 60E	Yes	Yes	Yes	Yes	Yes	No	No
Block 60W	Yes	Yes	Yes	Yes	Yes	No	No
Gemini	Yes	Yes	Yes	Yes	Yes	No	No
Block 59E	Yes	Yes	Yes	Yes	Yes	No	No
Block 59W	Yes	Yes	Yes	Yes	Yes	No	No
Board of Trade GC (North)	Yes	Yes	Yes	Yes	Yes	No	No
Board of Trade GC (South)	Yes	Yes	Yes	Yes	Yes	No	No
Northeast Vaughan							
Block 41	Yes	Yes	Yes	Yes	Yes	No	No
Block 34E	Yes	Yes	Yes	Yes	Yes	Yes	Yes
Block 34W	Yes	Yes	Yes	Yes	Yes	No	No
Block 27	Yes	Yes	Yes	Yes	Yes	Yes	Yes
Block 13N	Yes	Yes	Yes	TBD	Yes	TBD	TBD
Promenade							
Promenade	Yes	Yes	Yes	Yes	Yes	No	No
Kleinburg							
Kirby & Copper Creek	Yes	Yes	Yes	Yes	Yes	Yes	No



**VAU19-0016 -
ISS Study for Vaughan's
New Community Areas**

Legend

Sanitary Manholes:

- Surcharge (Freeboard ≤ 1.8 m)
- Surcharge (1.8m < Freeboard ≤ 2.8 m)
- Surcharge (Freeboard > 2.8 m)
- No Surcharge

Sanitary Sewers:

- Surcharge (Freeboard ≤ 1.8 m)
- Surcharge (1.8m < Freeboard ≤ 2.8 m)
- Surcharge (Freeboard > 2.8 m)
- No Surcharge

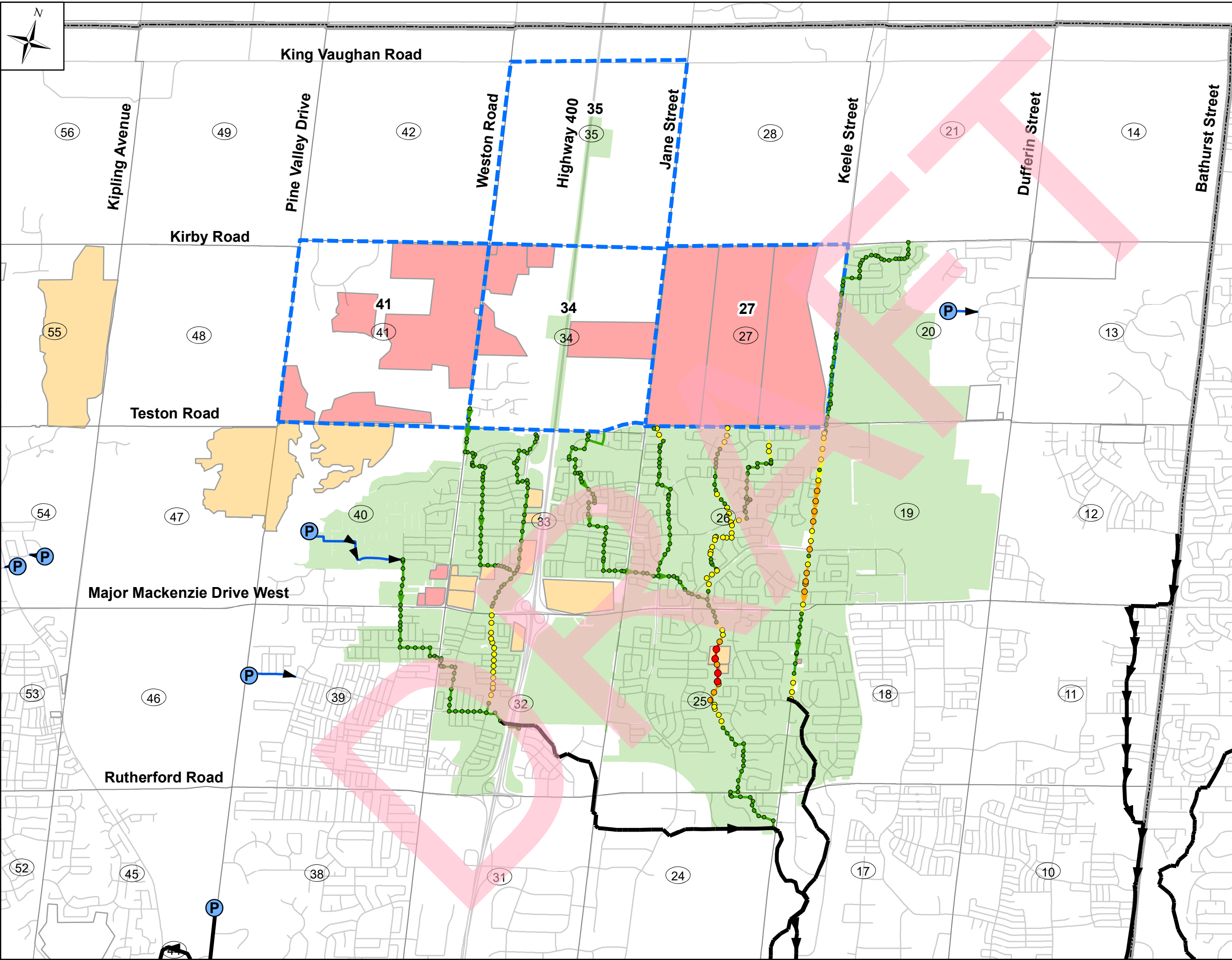
→ YDSS

- Existing Developments
- Approved Developments
- Future Developments
- ISS Study Areas
- 41 Block Number

**Figure 6-3:
West Vaughan
Future Condition**

Drawn By: J.H. Date: April 16, 2020





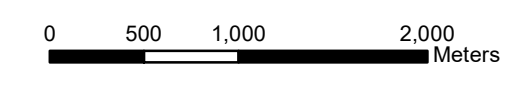
- Legend**
- P Pumping Stations
 - YDSS
 - Forcemains
 - Existing Developments
 - Approved Developments
 - Future Developments
 - Study Areas
 - Municipal Boundary
 - 57 Block Number
- Sanitary Manholes:**
- Surcharge (Freeboard ≤ 1.8 m)
 - Surcharge (1.8m < Freeboard ≤ 2.8 m)
 - Surcharge (Freeboard > 2.8 m)
 - No Surcharge
- Sanitary Sewers:**
- Surcharge (Freeboard ≤ 1.8 m)
 - Surcharge (1.8m < Freeboard ≤ 2.8 m)
 - Surcharge (Freeboard > 2.8 m)
 - No Surcharge

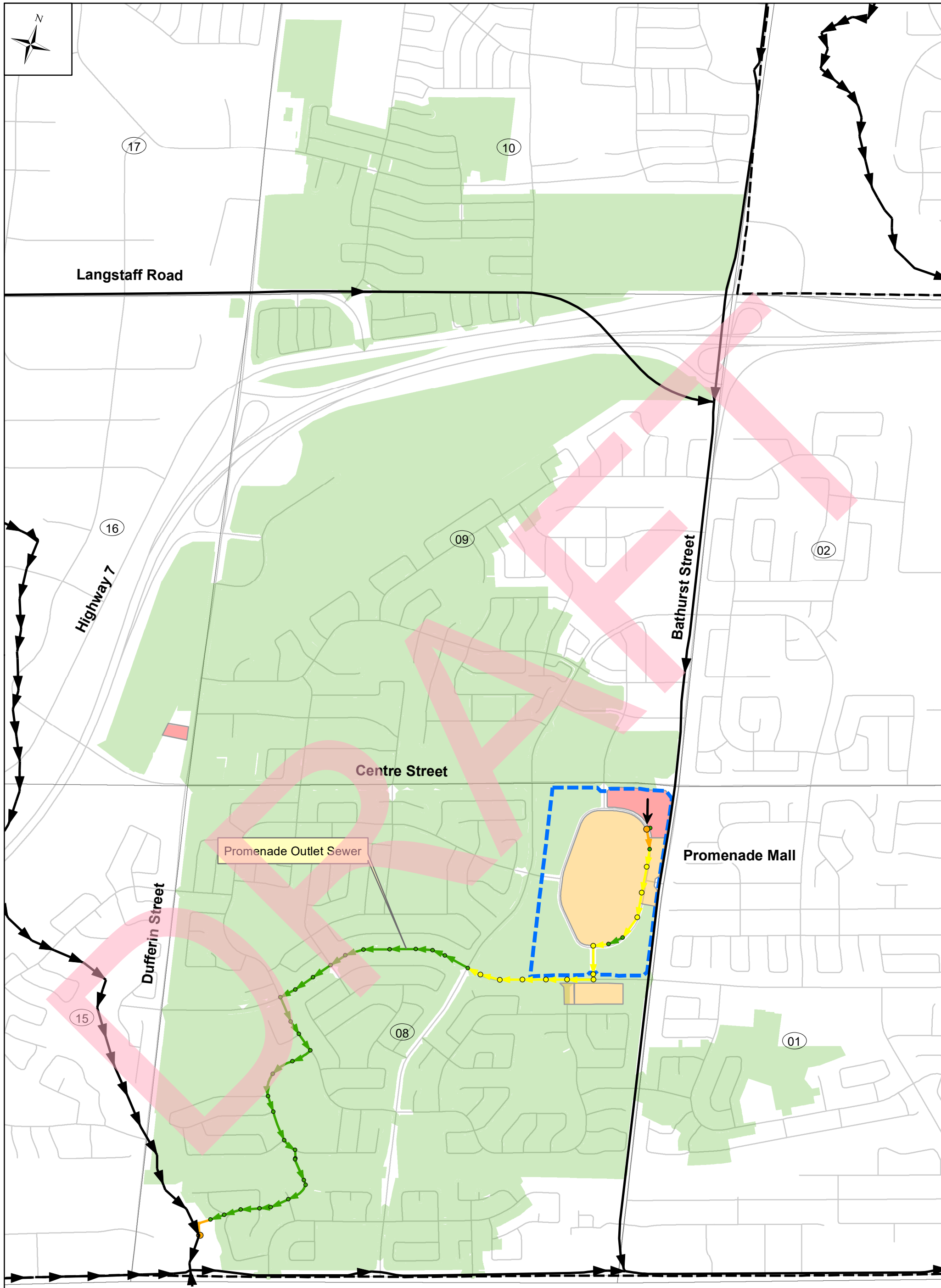



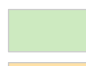



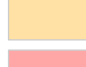






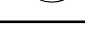

VAU19-0016 - ISS Study for Vaughan's New Community

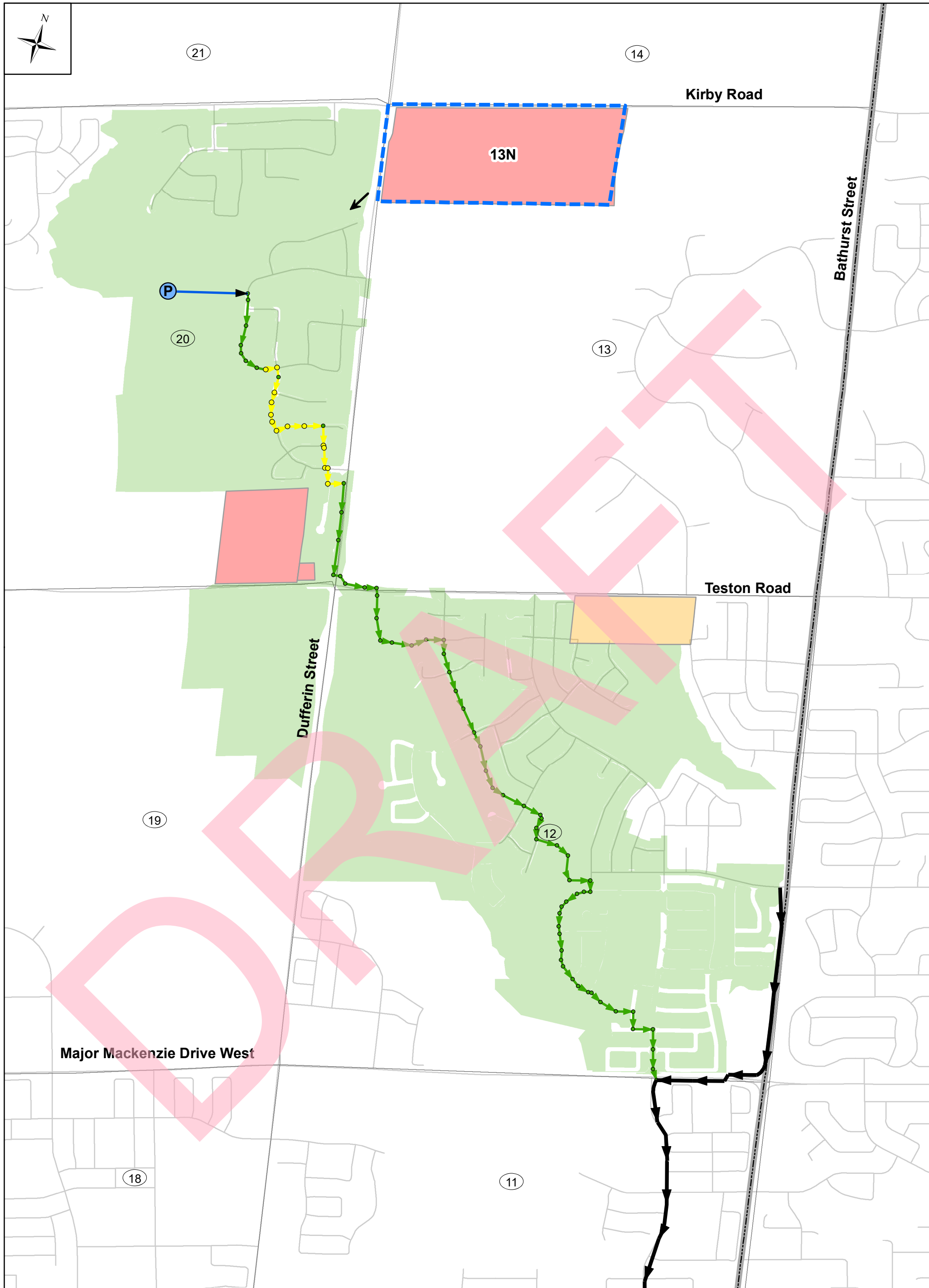
Figure 6-6: Northeast Vaughan Future Condition

Drawn By: J.H. Date: April 16, 2020





Legend		Sanitary Sewers:		YDSS	
Sanitary Manholes:	Sanitary Sewers:		Surcharge (Freeboard ≤ 1.8 m)		Existing Developments
			Surcharge (1.8m < Freeboard ≤ 2.8m)		Approved Developments
			Surcharge (Freeboard > 2.8 m)		Future Developments
			No Surcharge		ISS Study Areas
					Block Number



**VAU19-0016 -
ISS Study for Vaughan's
New Community Areas**

Legend

Sanitary Manholes:

- Surcharge (Freeboard ≤ 1.8 m)
- Surcharge (1.8m < Freeboard ≤ 2.8 m)
- Surcharge (Freeboard > 2.8 m)
- No Surcharge

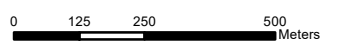
Sanitary Sewers:

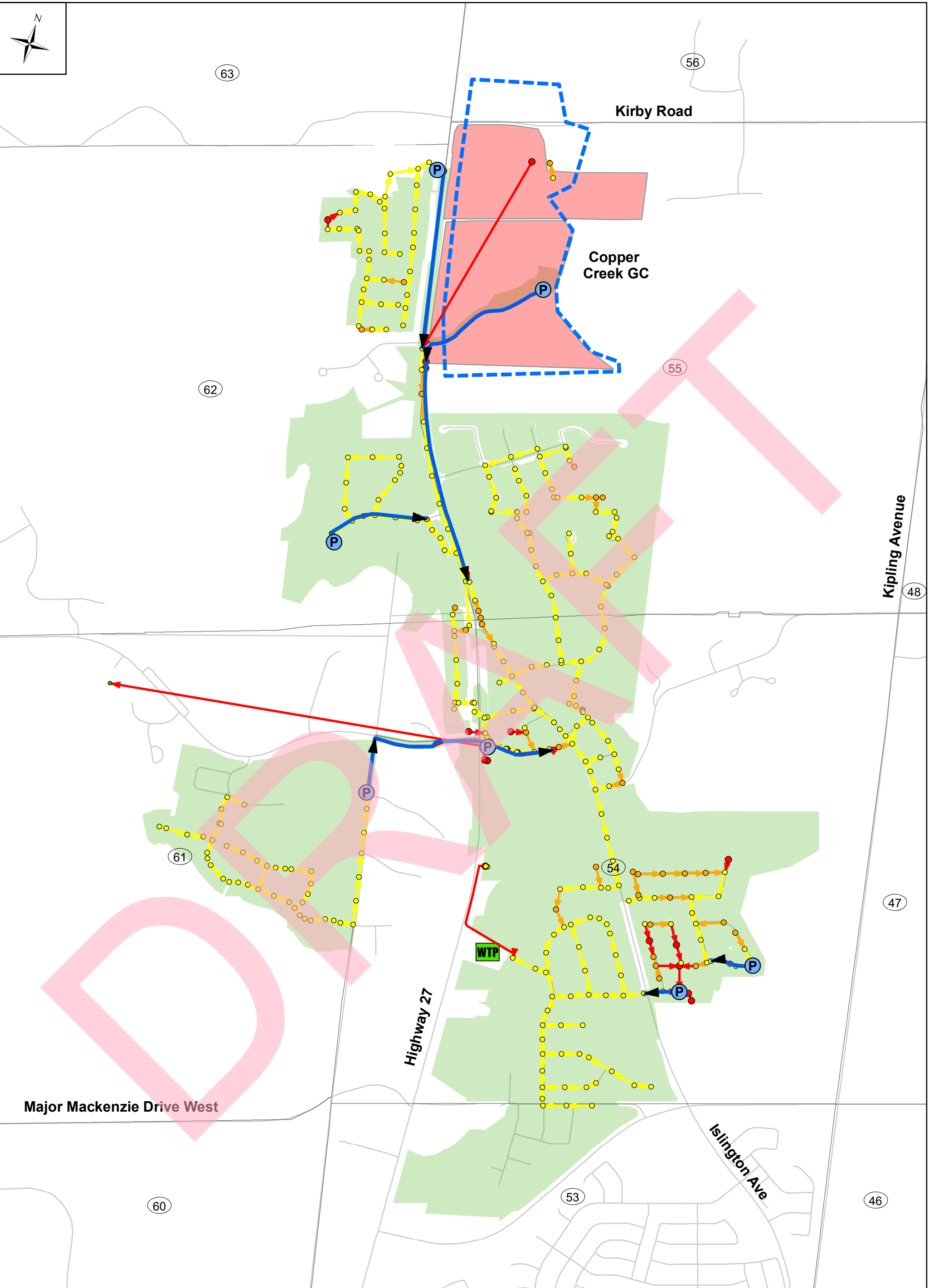
- Surcharge (Freeboard ≤ 1.8 m)
- Surcharge (1.8m < Freeboard ≤ 2.8m)
- Surcharge (Freeboard > 2.8 m)
- No Surcharge

- (P)** Pumping Stations
- Forcemains
- YDSS
- Existing Developments
- Approved Developments
- Future Developments
- ISS Study Areas
- (41)** Block Number

**Figure 6-12:
Block 13N Future Condition**

Drawn By: J.H. Date: April 16, 2020





Legend	
Sanitary Manholes: <ul style="list-style-type: none"> ● Surcharge (Freeboard ≤ 1.8 m) ● Surcharge (1.8m < Freeboard ≤ 2.8 m) ● Surcharge (Freeboard > 2.8 m) ● No Surcharge 	Sanitary Sewers: <ul style="list-style-type: none"> → Surcharge (Freeboard ≤ 1.8 m) → Surcharge (1.8m < Freeboard ≤ 2.8m) → Surcharge (Freeboard > 2.8 m) → No Surcharge
<ul style="list-style-type: none"> Existing Developments Approved Developments Future Developments ISS Study Areas 41 Block Number 	

**Figure 6-15:
Kirby Phase II**

 Drawn By: J.H. Date: April 16, 2020