



# 700 Centre Street, Thornhill

Public Hearing

September 22<sup>nd</sup>, 2020 at 7:00 p.m.

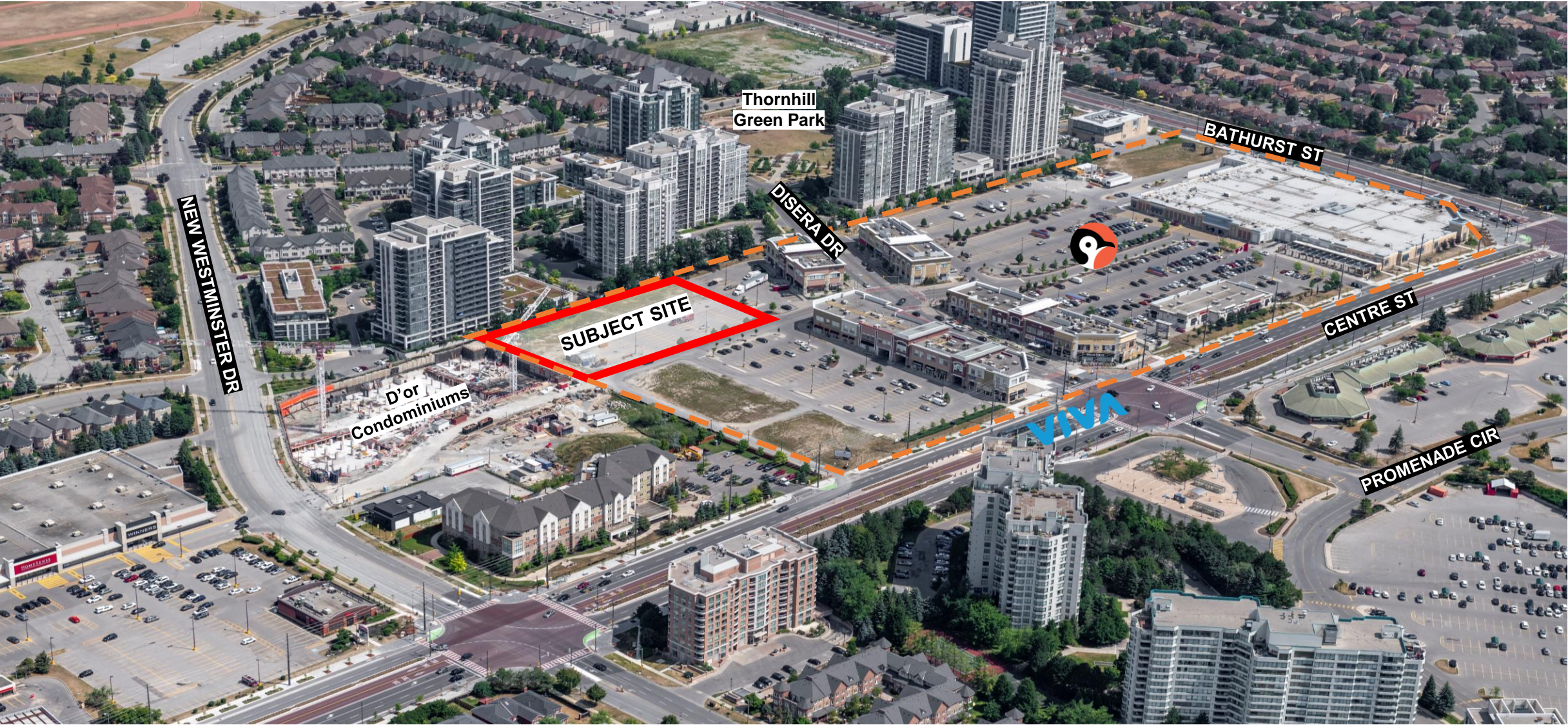
# RENDERING AT STREET LEVEL





# SITE OVERVIEW

AERIAL





# SITE OVERVIEW

AERIAL





# GREATER AREA CONTEXT

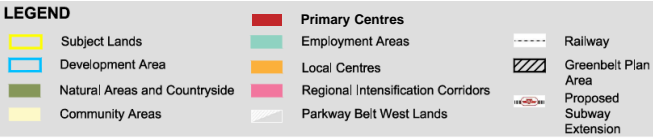
Bathurst and Centre Street



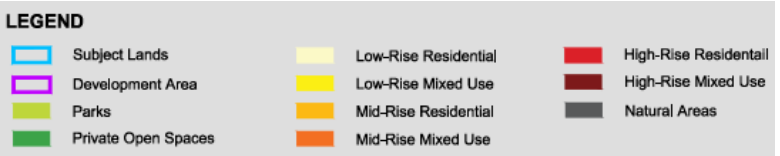
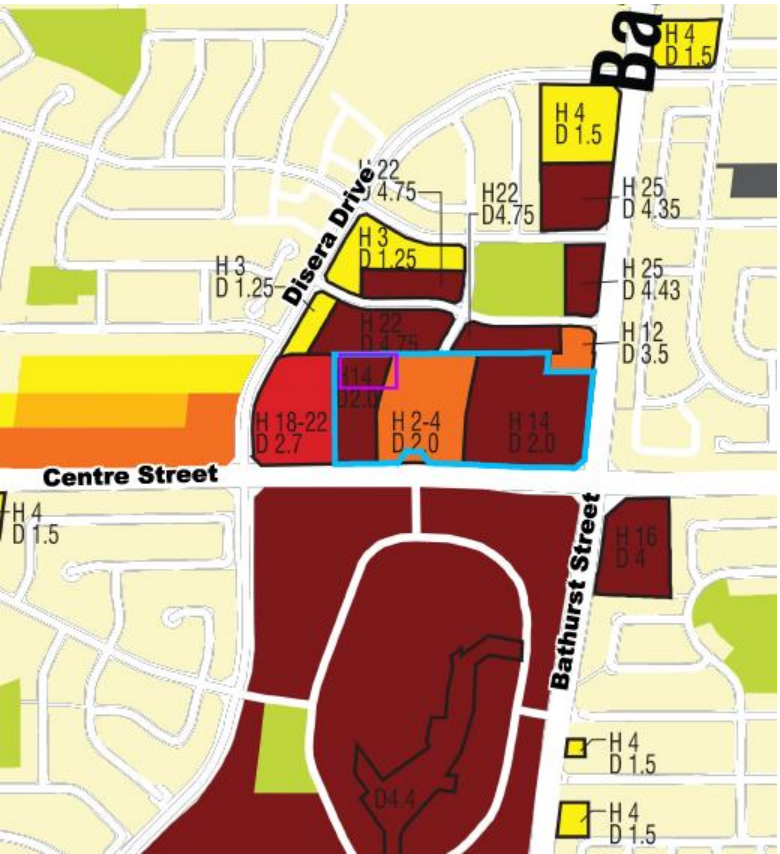
# EXISTING PERMISSIONS

## Bathurst and Centre Street

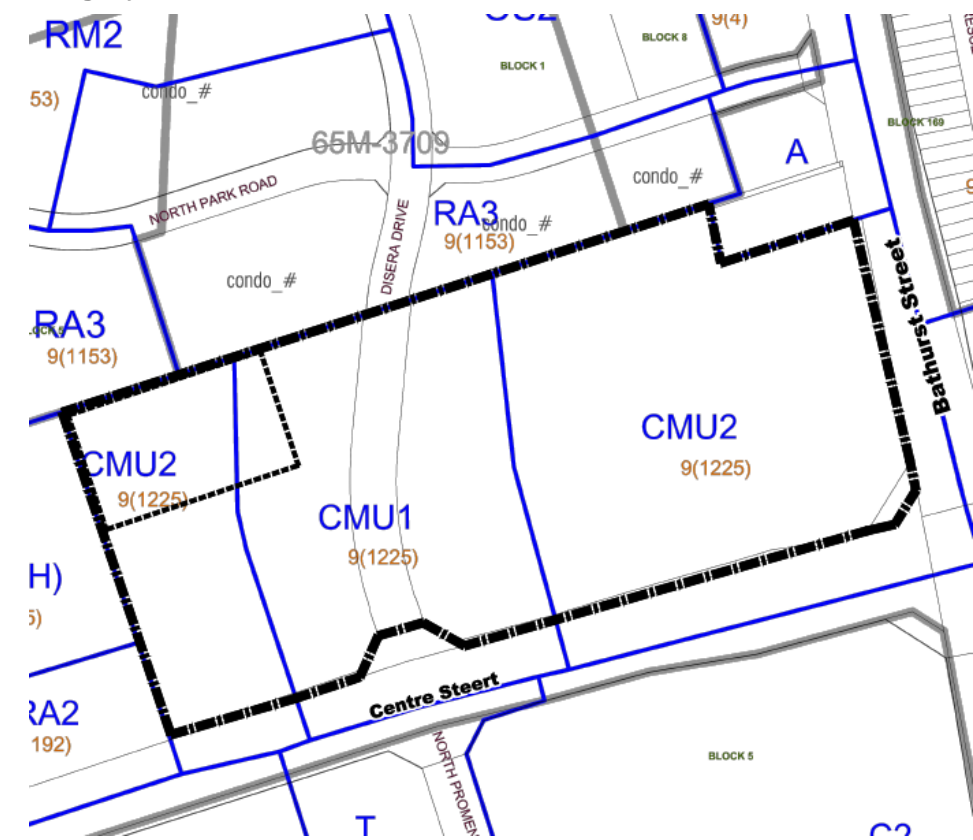
### VOP Schedule 1 – Urban Structure



### VOP Schedule 13 – Land Use



### Zoning By-law No. 1-88



### PERMITTED ON SUBJECT SITE:

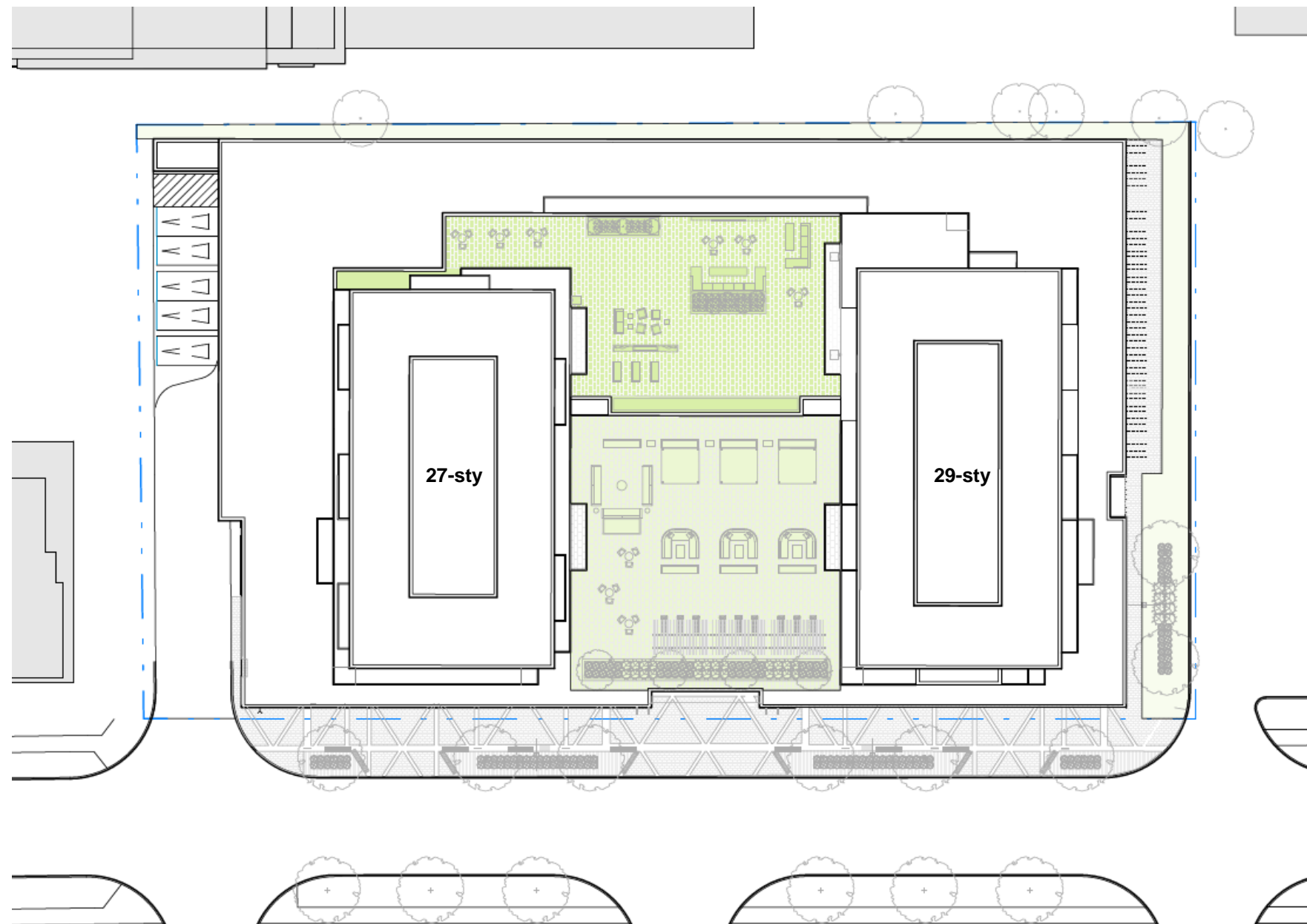
- Building height of 14-storeys
- Floor Space Index (FSI) of 2.0 times the area of the lot
- Residential, retail, and commercial uses



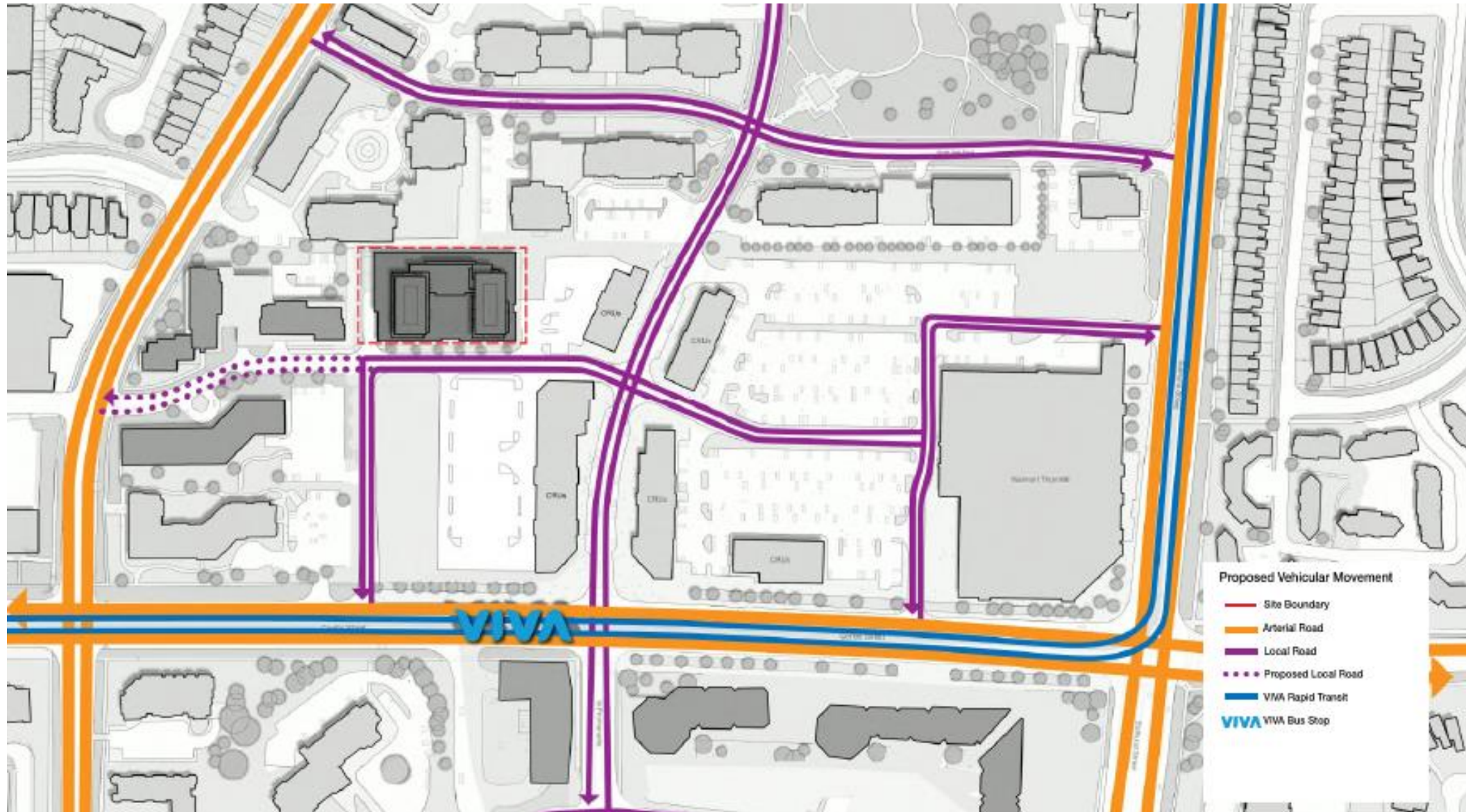
# ROOF PLAN

April 22<sup>nd</sup>, 2020 OPA / ZBA / SPA

Parcel Area:	57,612 sf
Total GFA:	455,201 sf
Residential GFA:	445,930 sf
Retail GFA:	9,271 sf
Units:	630 units
Parking:	510 stalls



# VEHICULAR ACCESS AND MOVEMENT





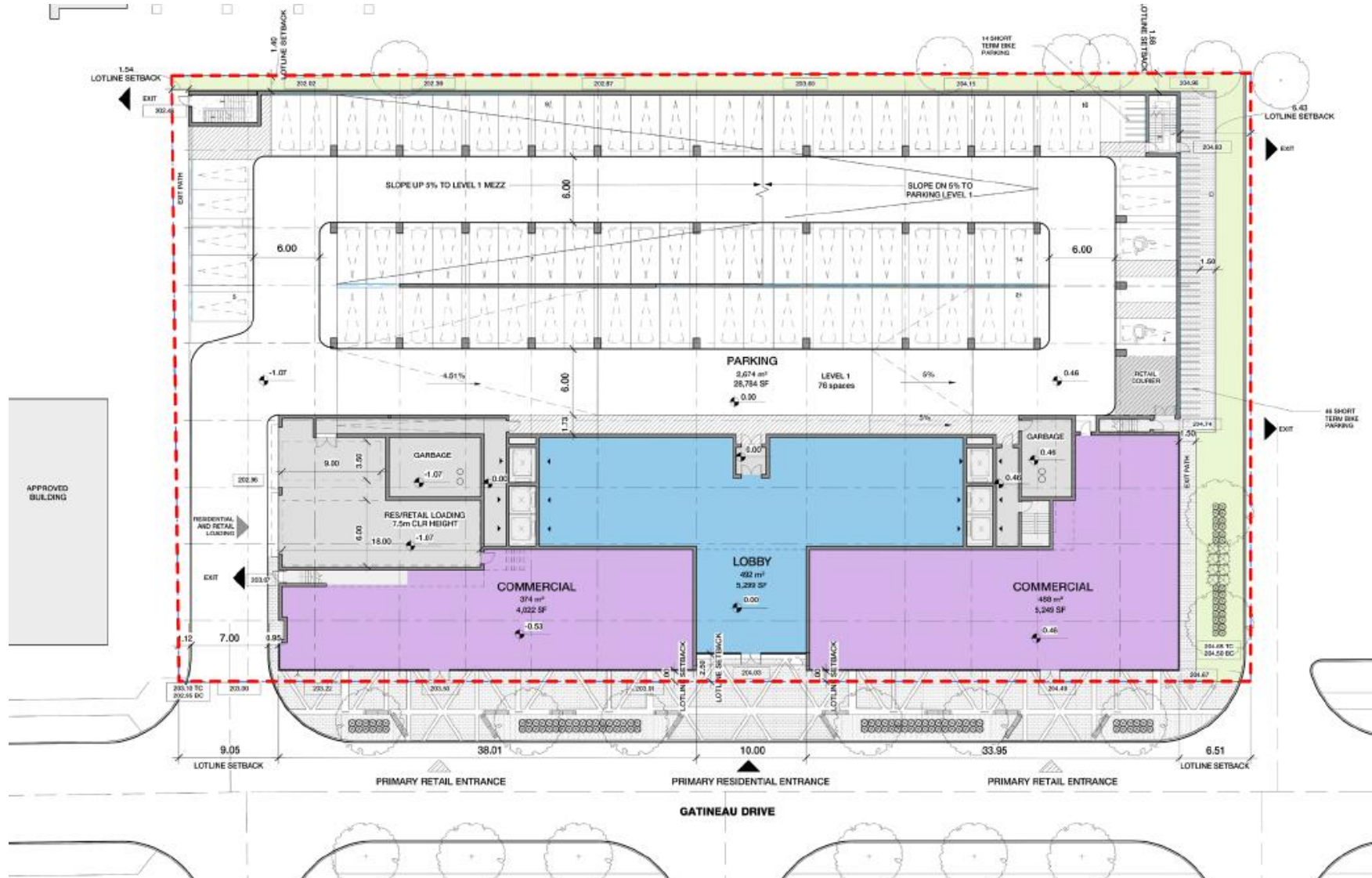
# PEDESTRIAN CYCLE ACCESS AND MOVEMENT





# GROUND FLOOR USES

April 22<sup>nd</sup>, 2020 OPA / ZBA / SPA





# RENDERING

Sweeny&co. Architects





# COLOURED ELEVATIONS

East Elevation



West Elevation





# MATERIAL PALETTE

The proposed development's palette of materials.



A. Royal Grey Brick



B. Vienna Brick



C. Ultra-clear Curtain Wall Glazing



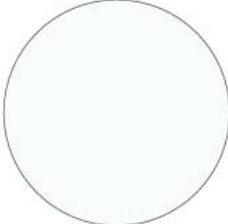
D. Metal Ventilation Louvres



E. Nero Zimbabwe Porcelain Cladding



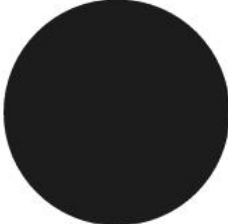
F. Clear Glazed Balcony



G. Primary White Spandrel Panel



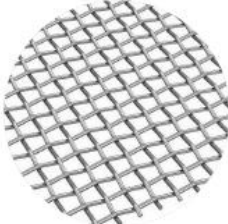
H. Seawolf Grey Spandrel Panel



I. Graphite Black Spandrel Panel



J. Glass/Metal Entrance Canopy



L. Metal Mesh



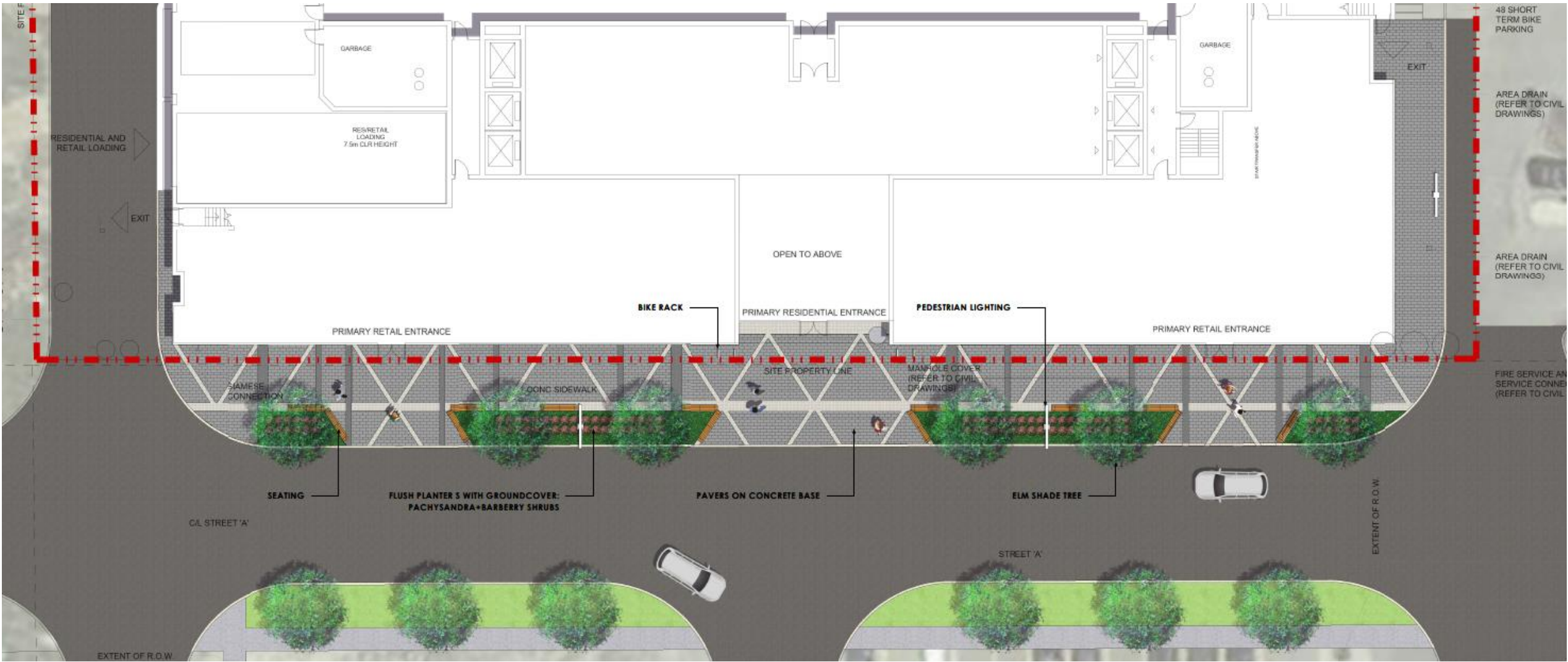
K. Clear Curtain Wall Glazing



M. Precast Concrete Panel



# LANDSCAPE PLAN





# RENDERING AT STREET LEVEL







**THANK YOU**