

July 29, 2020

Committee of Adjustments
Planning Department
City of Vaughan
Re: Application A140/19

The Board of Directors of Crown Heights Co-op Homes, Inc. met on Tuesday, July 28th, 2020 to discuss the new Mikveh/Community Building and any potential impact it may have to the Crown Heights community. The decision to outline the following concerns of this proposed project to the City of Vaughan was passed by Board of Directors at a Board meeting on July 28th, 2020.

We are not opposing the proposed 3 changes outlined in the application.

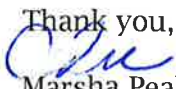
Nevertheless, we would like to bring to the attention of the Committee of Adjustments and Developing Engineering Department, that there was no community consultation in the design stage.

However, there are additional concerns related to the location of the new 8 parking spots situated at the South entry to the new building:

1. Areas of proposed storage of snow that will be plowed from the parking lot is too close to the adjacent property (row of townhouses). There is a high possibility that the excessive amount of water, as a result of thaw cycles, may cause flooding to the backyards of those row of townhouses. Our proposed suggestion will be to either, consider additional drainage system to prevent this issue or reallocate this small parking lot towards the West side of the new building close to existing main parking lot of the Chabad compound.
2. Merging of the traffic (even the minimal) from this parking lot towards the small circle by the end of Lonny Court and main entrance to the Crown Heights Co-operative Homes, may cause potential safety issues. This is another reason to reconsider reallocation of the entrance from this parking lot to Chabad compound main parking lot.

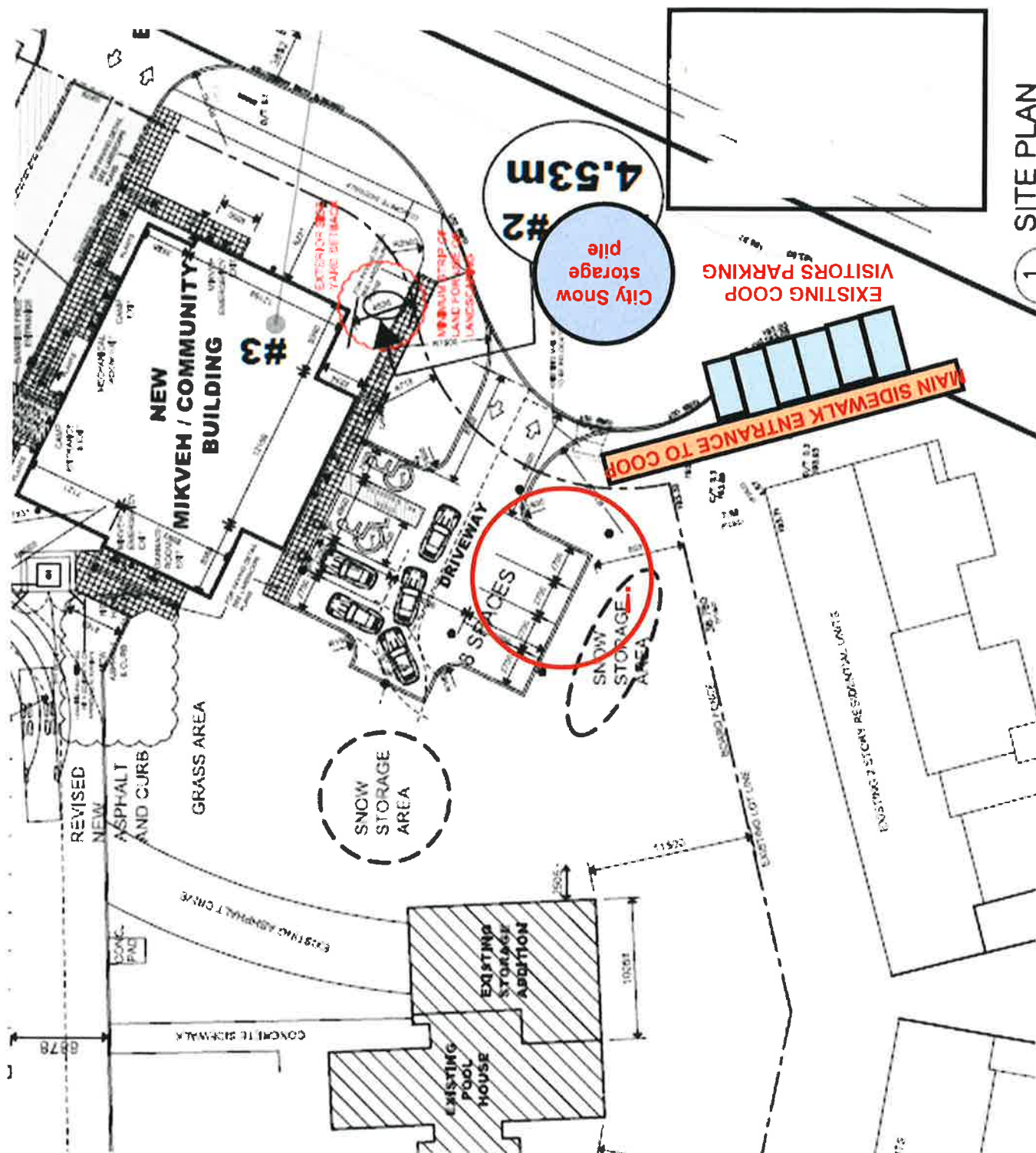
We are willing to participate in discussion with Developing Engineering department and Design team with a goal to find a feasible resolution.

Please review attached files that illustrate our concerns.

Thank you,

Marsha Peak
Property Manager

On Behalf of the Board of Directors

Crown Heights Co-operative Homes, Inc.





**MAIN PEDESTRIAN TRAFFIC
IN BOTH DIRECTIONS**

Snow storage pile
collected by the City from
Lonny Court during winter
months
located in the middle of
this circle.



proposed
new parking
lot

Pedestrian traffic in both
directions - main entrance
to coop