

# York Region Official Plan

## Chapter 2 – A Sustainable Natural Environment



*The policies of this section are designed to identify, protect, and enhance a linked Greenlands System as a permanent legacy for York Region.*

## MAP 2 REGIONAL GREENLANDS SYSTEM



Regional Greenlands System

Greenlands System Vision

Urban Area

Towns and Villages

Hamlet

Oak Ridges Moraine Conservation Plan

Oak Ridges Moraine Boundary

Oak Ridges Moraine Plan Area

Greenbelt Plan

Greenbelt Plan Area Boundary

Greenbelt Protected Countryside/Hamlet

Area Subject to the Lake Simcoe Protection Plan

Provincial Highways

Existing

Controlled Access Highway

Under Construction

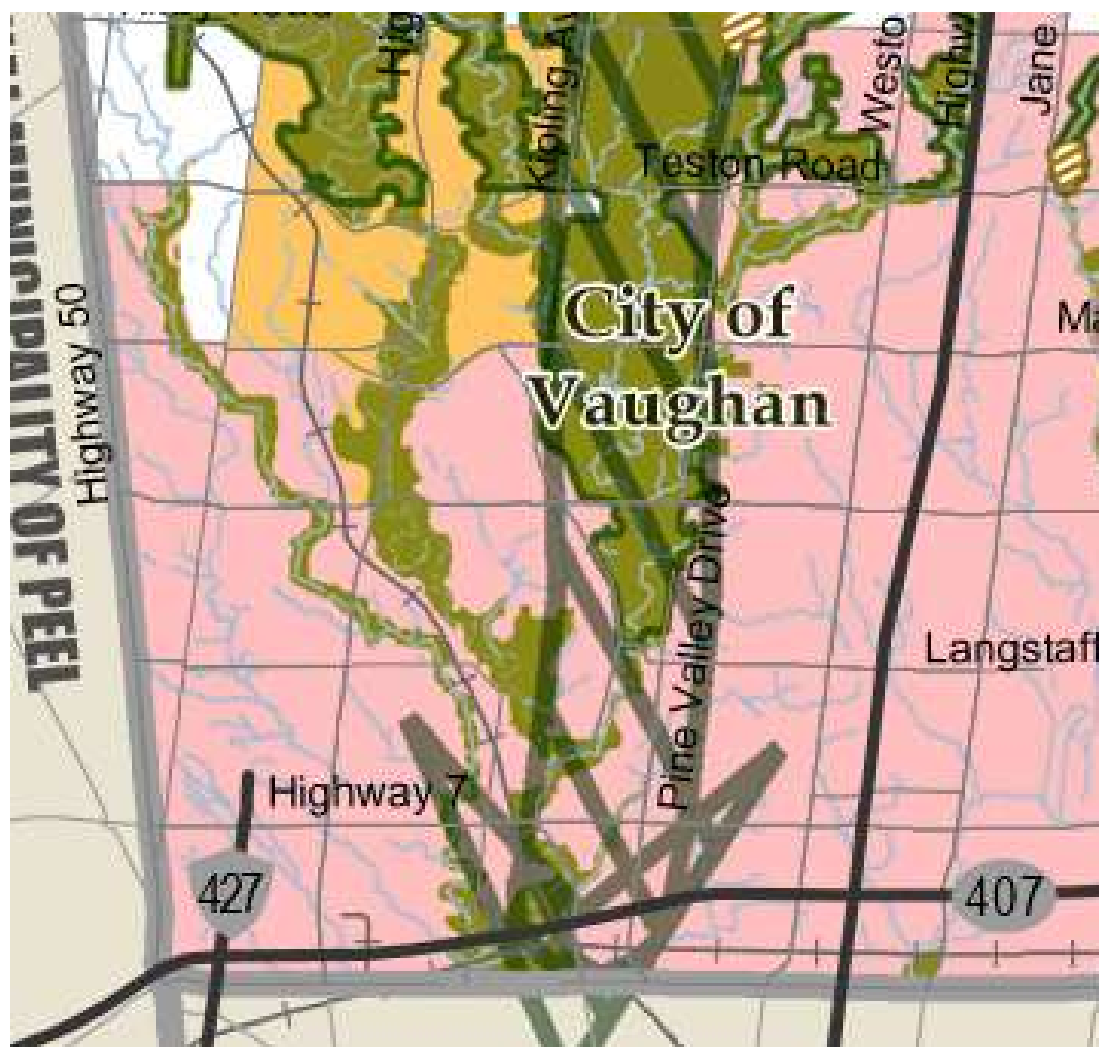
Municipal Boundary

Regional Boundary

\*The Greenlands System Vision identified on Map 2 of this Plan is intended to conceptually identify, with broad arrows, the general location of corridors within and beyond the Region that will perform major linkage functions on a Regional scale and will be further assessed as part of ongoing planning initiatives.

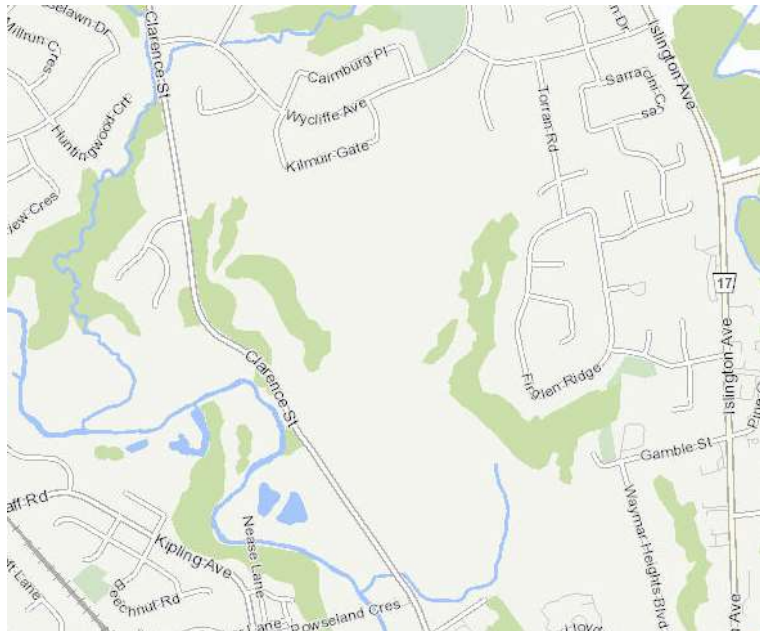
**York Region** **yorkmaps**

Produced by: Geographic Information Services Branch  
Office of the Chief Administrative Officer  
© Copyright, The Regional Municipality of York, April 2016  
© Copyright, The Regional Municipalities of Durham and Peel, County of Simcoe, City of Toronto  
© Queen's Printer for Ontario 2009-2010. Includes Greenbelt and Oak Ridges Moraine Boundaries and Water Features.



## REGIONAL GREENLANDS SYSTEM

-  Regional Greenlands System
-  Greenlands System Vision
-  Urban Area
-  Towns and Villages
-  Hamlet
- Oak Ridges Moraine Conservation Plan**
  -  Oak Ridges Moraine Boundary
  -  Oak Ridges Moraine Plan Area
- Greenbelt Plan**
  -  Greenbelt Plan Area Boundary
  -  Greenbelt Protected Countryside/Hamlet
  -  Area Subject to the Lake Simcoe Protection Plan
- Provincial Highways**
  -  Existing
- Controlled Access Highway**
  -  Under Construction



The primary function and vision of the Regional Greenlands System, and the policies of Section 2.1 of this Plan, is the protection of natural heritage features in a system of cores connected by corridors and linkages.

It is the policy of Council:

- 2.1.1 To protect and enhance the Regional Greenlands System and its functions shown on Map 2 and to control new development and site alteration within the vicinity of the System in accordance with the policies of this Plan.
- 2.1.9 That development and site alteration be prohibited within the Regional Greenlands System and that development and site alteration applications within 120 metres of the Regional Greenlands System shall be accompanied by an environmental impact study.



## **Why a Greenlands System?**

Urbanization introduces new stresses on the native plants and animals, and many species which could breed and move freely through a natural or agricultural landscape cannot easily persist in an urban landscape. The ability for plants and animals to migrate, disperse and forage among multiple habitats is critical. A connected system of features and linkages provided by the Regional Greenlands System is essential to preserve the Region's biota in perpetuity. ■■■