

1
A2 **PROPOSED BASEMENT FLOOR PLAN**
SCALE: 1/8"=1'-0"

ATTACHMENT 4

LEMCAD CONSULTANTS

817 COSBURN AVENUE, Toronto, Ontario M4C 2V9
PHONE: (416) 405-8164 FAX: (416) 405-9601

A2

PROJECT: PROPOSED ADDITION AND INT. ALTERATIONS

LOCATION: 10 RICHARD LOVAT COURT, KLEINBERG

DWG. BY: PD

CK'D BY: LM

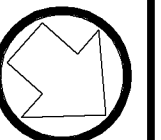
APP. BY:

DATE: OCT. 28, 2019

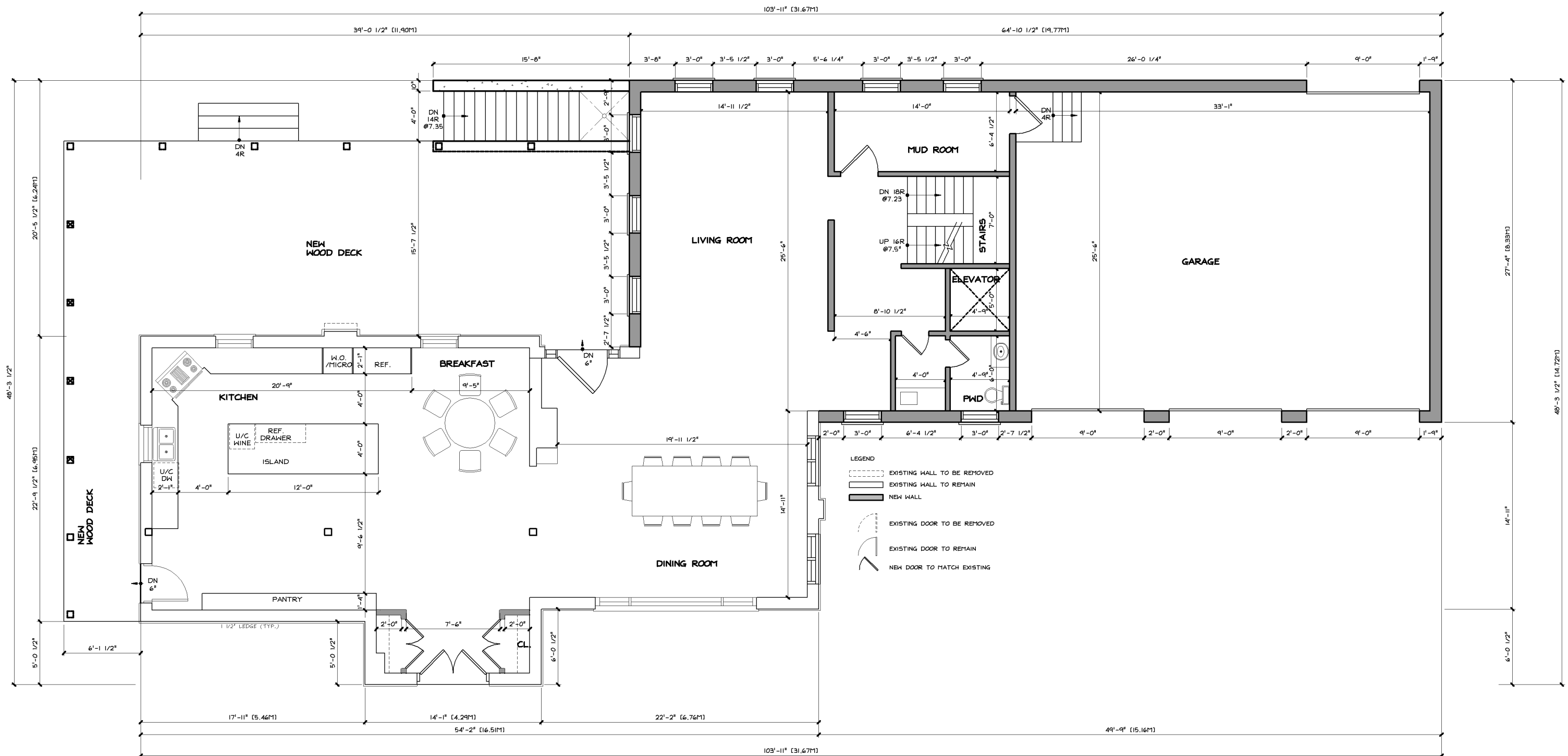
JOB NO.:

DWG. NO.: A2 OF 10

CADD-NAME:



ORIENTATION



1
A3 **PROPOSED**
GROUND FLOOR PLAN
SCALE: 1/8"=1'-0"

LEMCAD CONSULTANTS

817 COSBURN AVENUE, Toronto, Ontario M4C 2V9
PHONE: (416) 405-8164 FAX: (416) 405-9601

A3

PROJECT: PROPOSED ADDITION AND INT. ALTERATIONS

LOCATION: 10 RICHARD LOVAT COURT, KLEINBERG

DWG. BY: PD

CK'D BY: LM

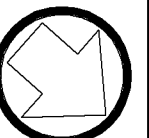
APP. BY:

DATE: OCT. 28, 2019

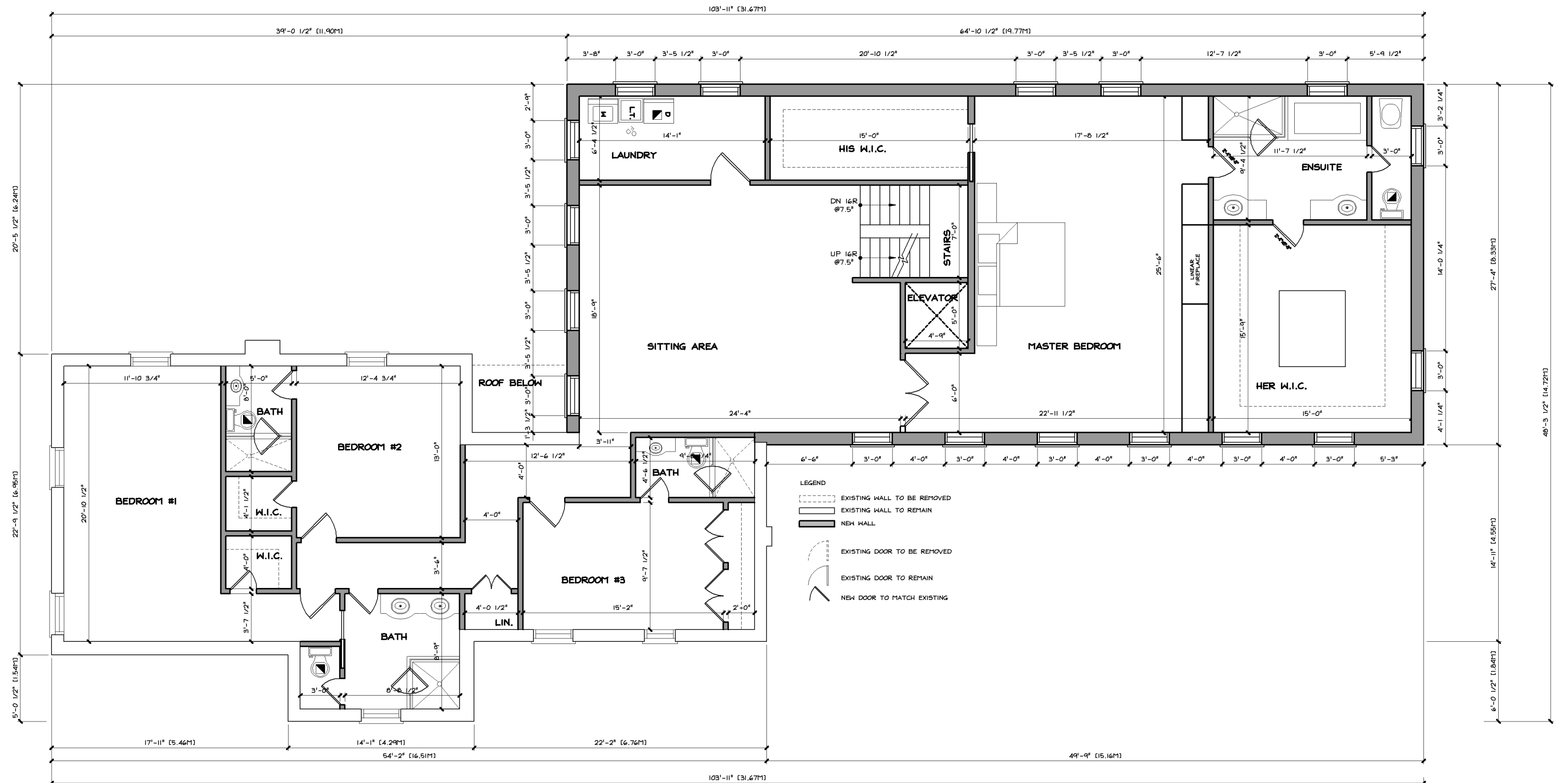
JOB NO.:

DWG. NO.: A3 OF 10

CADD-NAME:



ORIENTATION



**PROPOSED
SECOND FLOOR PLAN**
SCALE: 1/8"=1'-0"

LEMCAD CONSULTANTS

817 COSBURN AVENUE, Toronto, Ontario M4C 2V9
PHONE: (416) 405-8164 FAX: (416) 405-9601

A4

PROJECT: PROPOSED ADDITION AND INT. ALTERATIONS

LOCATION: 10 RICHARD LOVAT COURT, KLEINBERG

DWG. BY: PD

CK'D BY: LM

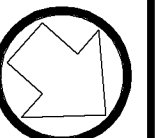
APP. BY:

DATE: OCT. 28, 2019

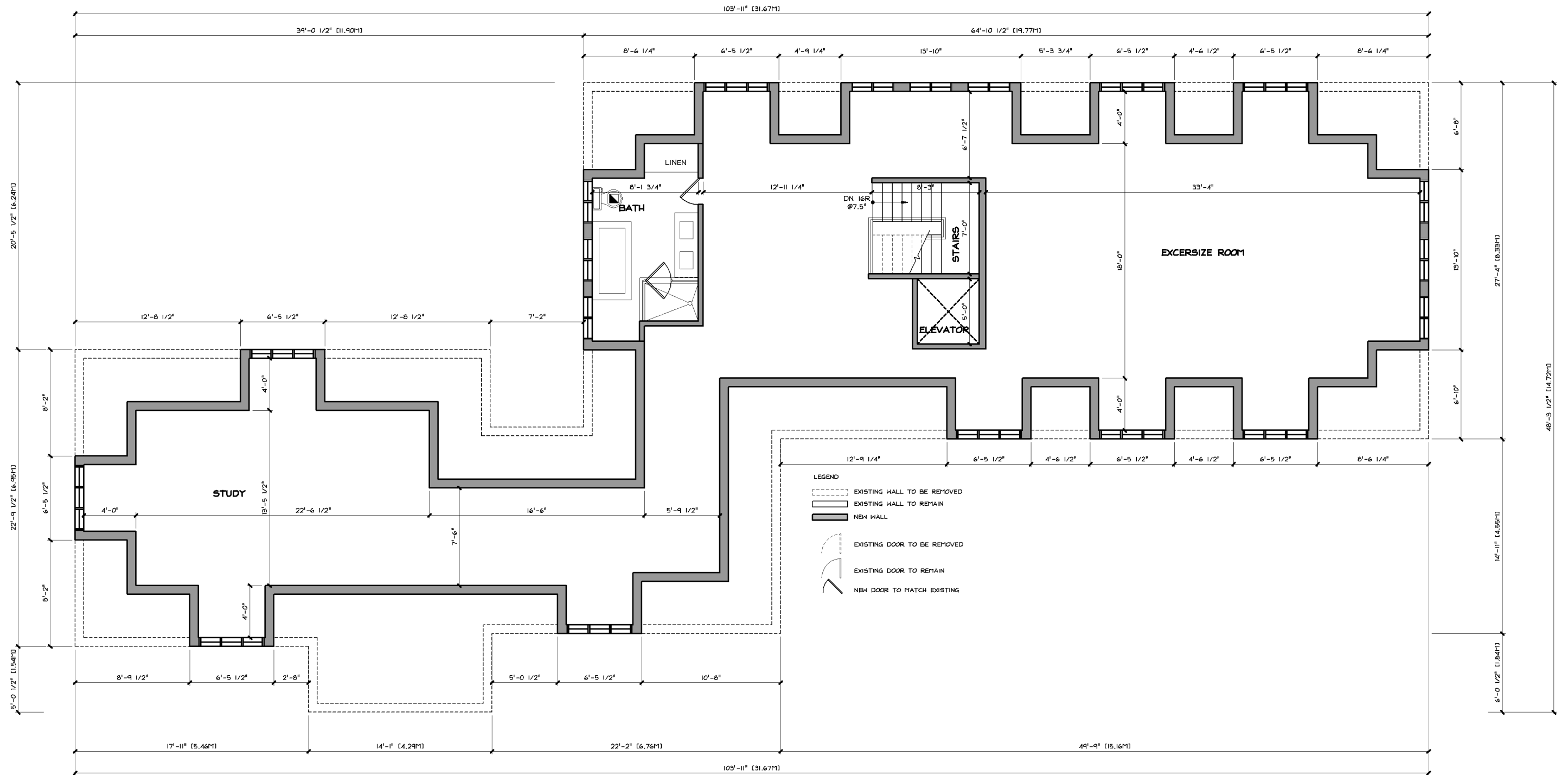
JOB NO.:

DWG. NO.: A4 OF 10

CADD-NAME:



ORIENTATION



**PROPOSED
THIRD FLOOR PLAN**
SCALE: 1/8"=1'-0"

LEMCAD CONSULTANTS

817 COSBURN AVENUE, Toronto, Ontario M4C 2V9
PHONE: (416) 405-8164 FAX: (416) 405-9601

A5

PROJECT: PROPOSED ADDITION AND INT. ALTERATIONS

LOCATION: 10 RICHARD LOVAT COURT, KLEINBERG

DWG. BY: PD

CK'D BY: LM

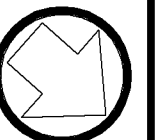
APP. BY:

DATE: OCT. 28, 2019

JOB NO.:

DWG. NO.: A5 OF 10

CADD-NAME:



ORIENTATION