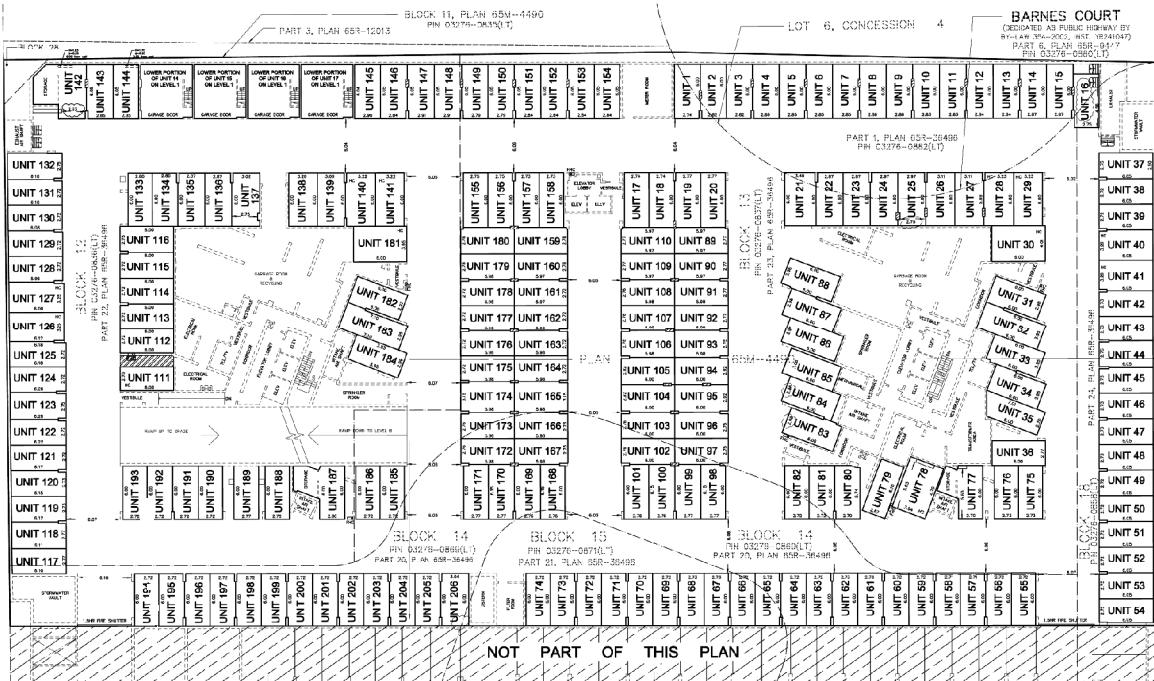
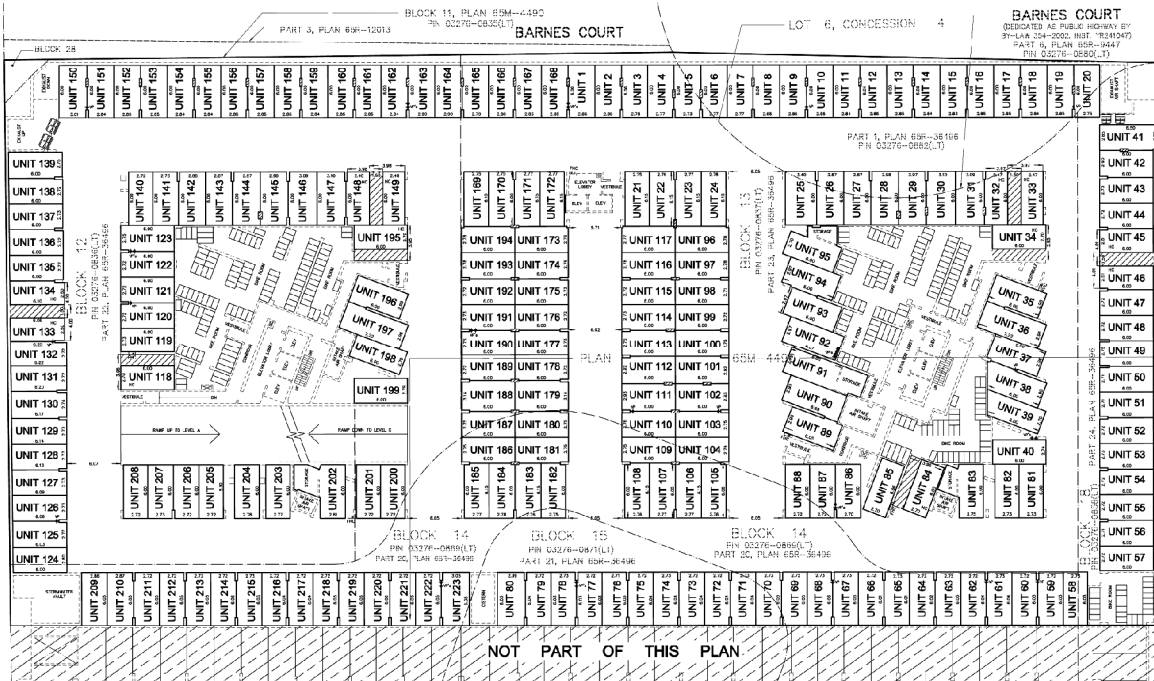


MAPLECRETE ROAD  
 (DEDICATED AS PUBLIC HIGHWAY BY  
 BY-LAW 200-2002, REG. 1928447)  
 PART 6, PLAN 659-7855  
 (PH. 02276-0830(1))



PLAN VIEW ILLUSTRATING  
 UNITS 1 TO 206 INCLUSIVE (Residential Parking Includes 12 Accessible Parking and 3 With Storage Attached)  
 LOWER PORTION OF UNITS 14, 15, 16 AND 17 ON LEVEL 1  
 LEVEL A

MAPLECRETE ROAD  
 (DEDICATED AS PUBLIC HIGHWAY BY  
 BY-LAW 200-2002, REG. 1928447)  
 PART 6, PLAN 659-7855  
 (PH. 02276-0830(1))



PLAN VIEW ILLUSTRATING  
 UNITS 1 TO 223 INCLUSIVE (Residential Parking Includes 12 Accessible Parking and 4 With Storage Attached)  
 LEVEL B

# Draft Plan of Condominium (Standard) - Underground Level 1 & 2

LOCATION: 2908 and 2916 Highway 7;  
 Part of Lot 6, Concession 4

APPLICANT: Royal 7 Developments



# Attachment

FILE:  
 19CDM-19V008  
 RELATED FILE:  
 DA.16.111

DATE: June 16, 2020

# 12