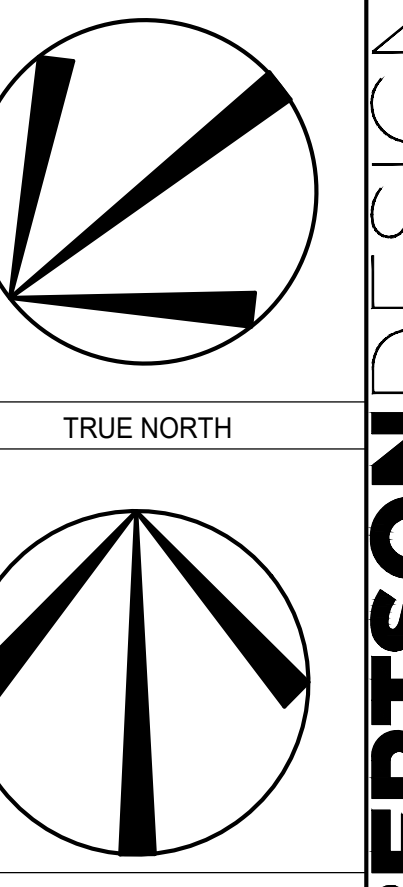
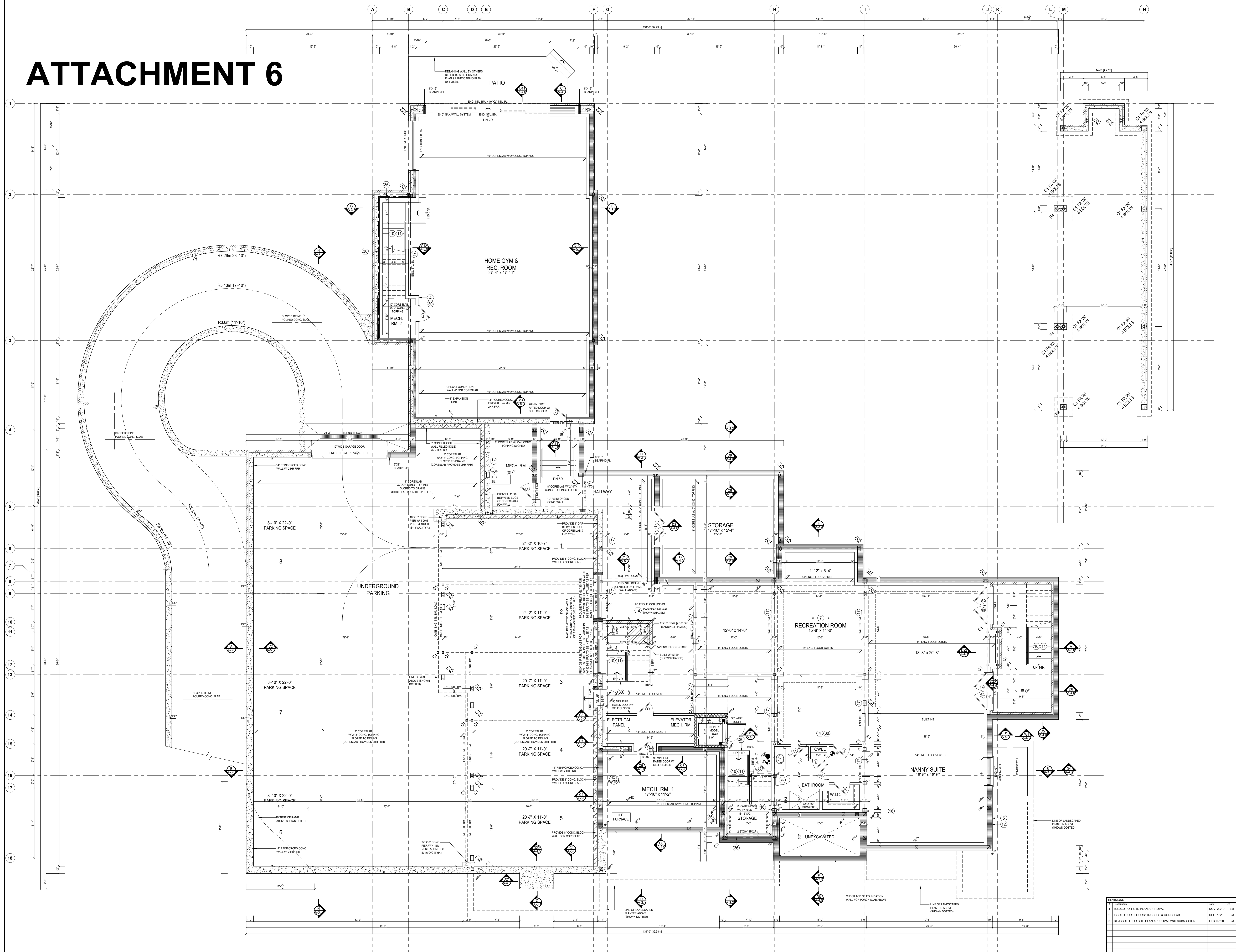


ATTACHMENT 6



IAN ROBERTSON DESIGN



BASEMENT GENERAL NOTES

- ALL CONCRETE FOOTINGS SHALL REST ON UNDISTURBED SOIL WITH ALLOWABLE BEARING CAPACITY OF 1500 PSF. (TO BE SITE VERIFIED) AND SHALL BE A MIN. OF 12" BELOW FINISHED GRADE.
- CONCRETE FOOTINGS AND FOUNDATION WALLS SHALL HAVE A MINIMUM COMPRESSIVE STRENGTH OF 3000 PSI AFTER 28 DAYS.
- ALL REINFORCING STEEL MEMBERS AND INSETS SHALL BE CSA G 40.21 M500 AND EMBEDDED PLATES SHALL BE GENERAL PURPOSE STEEL.
- REINFORCING SHALL BE PLACED AND COMPACTED EQUALLY ON BOTH SIDES OF CONCRETE FOUNDATION WALLS TO AVOID LATERAL LOADING.
- ALL EXPOSED CONCRETE TO BE 3000 PSI W/ 5% AIR ENTRAINMENT.
- ALL FOOTINGS TO HAVE MIN. 2-10M BARS CONT.
- REFER TO FLOOR TRUSSES SHEET DRAWINGS FOR ALL FLOOR FRAMING INFORMATION.
- WHEN FINISH FLOOR IS GREATER THAN 20" A 1" O.C. POURED CONC. FOTM. WALL IS REQUIRED.
- BRIDGE CONVENTIONAL FLOOR JOISTS @ 24" O.C. BELOW ALL CERAMIC TILE AREAS PROVIDE 1 ROW REINFORCING FOR SPANS OF 2'-7" 2 ROWS FOR SPANS GREATER THAN 7'.

PAD FOOTING SCHEDULE

F1	24"x24"x12" POURED CONC. PAD
F2	36"x36"x12" POURED CONC. PAD
F3	48"x48"x12" POURED CONC. PAD
F4	60"x60"x12" POURED CONC. PAD W/ 6 10M B.B.W.
F5	84"x84"x12" POURED CONC. PAD
F6	108"x108"x12" POURED CONC. PAD

STEEL COLUMN SCHEDULE

C1	4" DIA. A307 B.B.S. W/ 10"x10"x12" BASE PLATE
C2	6" DIA. A307 B.B.S. W/ 12"x12"x12" BASE PLATE
C3	8" DIA. A307 B.B.S. W/ 14"x14"x12" BASE PLATE
C4	10" DIA. A307 B.B.S. W/ 16"x16"x12" BASE PLATE
C5	12" DIA. A307 B.B.S. W/ 18"x18"x12" BASE PLATE
C6	14" DIA. A307 B.B.S. W/ 20"x20"x12" BASE PLATE
C7	16" DIA. A307 B.B.S. W/ 22"x22"x12" BASE PLATE
C8	18" DIA. A307 B.B.S. W/ 24"x24"x12" BASE PLATE
C9	20" DIA. A307 B.B.S. W/ 26"x26"x12" BASE PLATE
C10	22" DIA. A307 B.B.S. W/ 28"x28"x12" BASE PLATE
C11	24" DIA. A307 B.B.S. W/ 30"x30"x12" BASE PLATE
C12	26" DIA. A307 B.B.S. W/ 32"x32"x12" BASE PLATE
C13	28" DIA. A307 B.B.S. W/ 34"x34"x12" BASE PLATE
C14	30" DIA. A307 B.B.S. W/ 36"x36"x12" BASE PLATE

WOODSTEEL LINTELS / WOOD BEAMS

L1	2" x 4" SP2	WB1	2" x 4" SP2
L2	2" x 6" SP2	WB2	2" x 6" SP2
L3	2" x 8" SP2	WB3	2" x 8" SP2
L4	2" x 10" SP2	WB4	2" x 10" SP2
L5	2" x 12" SP2	WB5	2" x 12" SP2
L6	2" x 14" SP2	WB6	2" x 14" SP2
L7	2" x 16" SP2	WB7	2" x 16" SP2
L8	2" x 18" SP2	WB8	2" x 18" SP2
L9	2" x 20" SP2	WB9	2" x 20" SP2
L10	2" x 22" SP2	WB10	2" x 22" SP2
L11	2" x 24" SP2	WB11	2" x 24" SP2
L12	2" x 26" SP2	WB12	2" x 26" SP2
L13	2" x 28" SP2	WB13	2" x 28" SP2
L14	2" x 30" SP2	WB14	2" x 30" SP2
L15	2" x 32" SP2	WB15	2" x 32" SP2
L16	2" x 34" SP2	WB16	2" x 34" SP2
L17	2" x 36" SP2	WB17	2" x 36" SP2
L18	2" x 38" SP2	WB18	2" x 38" SP2
L19	2" x 40" SP2	WB19	2" x 40" SP2
L20	2" x 42" SP2	WB20	2" x 42" SP2
L21	2" x 44" SP2	WB21	2" x 44" SP2
L22	2" x 46" SP2	WB22	2" x 46" SP2
L23	2" x 48" SP2	WB23	2" x 48" SP2
L24	2" x 50" SP2	WB24	2" x 50" SP2
L25	2" x 52" SP2	WB25	2" x 52" SP2
L26	2" x 54" SP2	WB26	2" x 54" SP2
L27	2" x 56" SP2	WB27	2" x 56" SP2
L28	2" x 58" SP2	WB28	2" x 58" SP2
L29	2" x 60" SP2	WB29	2" x 60" SP2
L30	2" x 62" SP2	WB30	2" x 62" SP2
L31	2" x 64" SP2	WB31	2" x 64" SP2
L32	2" x 66" SP2	WB32	2" x 66" SP2
L33	2" x 68" SP2	WB33	2" x 68" SP2
L34	2" x 70" SP2	WB34	2" x 70" SP2
L35	2" x 72" SP2	WB35	2" x 72" SP2
L36	2" x 74" SP2	WB36	2" x 74" SP2
L37	2" x 76" SP2	WB37	2" x 76" SP2
L38	2" x 78" SP2	WB38	2" x 78" SP2
L39	2" x 80" SP2	WB39	2" x 80" SP2
L40	2" x 82" SP2	WB40	2" x 82" SP2
L41	2" x 84" SP2	WB41	2" x 84" SP2
L42	2" x 86" SP2	WB42	2" x 86" SP2
L43	2" x 88" SP2	WB43	2" x 88" SP2
L44	2" x 90" SP2	WB44	2" x 90" SP2
L45	2" x 92" SP2	WB45	2" x 92" SP2
L46	2" x 94" SP2	WB46	2" x 94" SP2
L47	2" x 96" SP2	WB47	2" x 96" SP2
L48	2" x 98" SP2	WB48	2" x 98" SP2
L49	2" x 100" SP2	WB49	2" x 100" SP2
L50	2" x 102" SP2	WB50	2" x 102" SP2
L51	2" x 104" SP2	WB51	2" x 104" SP2
L52	2" x 106" SP2	WB52	2" x 106" SP2
L53	2" x 108" SP2	WB53	2" x 108" SP2
L54	2" x 110" SP2	WB54	2" x 110" SP2
L55	2" x 112" SP2	WB55	2" x 112" SP2
L56	2" x 114" SP2	WB56	2" x 114" SP2
L57	2" x 116" SP2	WB57	2" x 116" SP2
L58	2" x 118" SP2	WB58	2" x 118" SP2
L59	2" x 120" SP2	WB59	2" x 120" SP2
L60	2" x 122" SP2	WB60	2" x 122" SP2
L61	2" x 124" SP2	WB61	2" x 124" SP2
L62	2" x 126" SP2	WB62	2" x 126" SP2
L63	2" x 128" SP2	WB63	2" x 128" SP2
L64	2" x 130" SP2	WB64	2" x 130" SP2
L65	2" x 132" SP2	WB65	2" x 132" SP2
L66	2" x 134" SP2	WB66	2" x 134" SP2
L67	2" x 136" SP2	WB67	2" x 136" SP2
L68	2" x 138" SP2	WB68	2" x 138" SP2
L69	2" x 140" SP2	WB69	2" x 140" SP2
L70	2" x 142" SP2	WB70	2" x 142" SP2
L71	2" x 144" SP2	WB71	2" x 144" SP2
L72	2" x 146" SP2	WB72	2" x 146" SP2
L73	2" x 148" SP2	WB73	2" x 148" SP2
L74	2" x 150" SP2	WB74	2" x 150" SP2
L75	2" x 152" SP2	WB75	2" x 152" SP2
L76	2" x 154" SP2	WB76	2" x 154" SP2
L77	2" x 156" SP2	WB77	2" x 156" SP2
L78	2" x 158" SP2	WB78	2" x 158" SP2
L79	2" x 160" SP2	WB79	2" x 160" SP2
L80	2" x 162" SP2	WB80	2" x 162" SP2
L81	2" x 164" SP2	WB81	2" x 164" SP2
L82	2" x 166" SP2	WB82	2" x 166" SP2
L83	2" x 168" SP2	WB83	2" x 168" SP2
L84	2" x 170" SP2	WB84	2" x 170" SP2
L85	2" x 172" SP2	WB85	2" x 172" SP2
L86	2" x 174" SP2	WB86	2" x 174" SP2
L87	2" x 176" SP2	WB87	2" x 176" SP2
L88	2" x 178" SP2	WB88	2" x 178" SP2
L89	2" x 180" SP2	WB89	2" x 180" SP2
L90	2" x 182" SP2	WB90	2" x 182" SP2
L91	2" x 184" SP2	WB91	2" x 184" SP2
L92	2" x 186" SP2	WB92	2" x 186" SP2
L93	2" x 188" SP2	WB93	2" x 188" SP2
L94	2" x 190" SP2	WB94	2" x 190" SP2
L95	2" x 192" SP2	WB95	2" x 192" SP2
L96	2" x 194" SP2	WB96	2" x 194" SP2
L97	2" x 196" SP2	WB97	2" x 196" SP2
L98	2" x 198" SP2	WB98	2" x 198" SP2
L99	2" x 200" SP2	WB99	2" x 200" SP2
L100	2" x 202" SP2	WB100	2" x 202" SP2

DOOR SCHEDULE - BASEMENT

1	2' 0" x 8' 0" - INSULATED ENTRANCE DOOR
2	2' 0" x 8' 0" - WOOD & GLASS DOOR
3	2' 0" x 8' 0" x 1 1/2" - EXTERIOR SLAB DOOR
4	2' 0" x 8' 0" x 1 1/2" - EXTERIOR SLAB DOOR
5	2' 0" x 8' 0" x 1 1/2" - INTERIOR SLAB DOOR
6	2' 0" x 8' 0" x 1 1/2" - INTERIOR SLAB DOOR
7	2' 0" x 8' 0" x 1 1/2" - INTERIOR SLAB DOOR
8	2' 0" x 8' 0" x 1 1/2" - INTERIOR SLAB DOOR
9	2' 0" x 8' 0" x 1 1/2" - INTERIOR SLAB DOOR

REBAR NOTES

- B.L. BOTTOM LOWER LEVEL
- B.U. BOTTOM UPPER LEVEL
- T.U. TOP UPPER LEVEL
- F.A. TOP ALL AROUND
- B.W. BOTTOM EACH WAY

DESIGN LOADS - FLOOR

DL1: 150 PSF
DL2: 100 PSF
DL3: 20 PSF

REVISIONS

NO.	DESCRIPTION	DATE	BY
1	ISSUED FOR SITE PLAN APPROVAL	NOV. 2019	BM
2	ISSUED FOR FLOORS, TRUSSES & CORESLAB	DEC. 18/19	BM
3	RE-ISSUED FOR SITE PLAN APPROVAL 2ND SUBMISSION	FEB. 07/20	BM

DARREN & DANIELE MCNAIR
79 VALLEYVIEW COURT,
CITY OF VAUGHAN

DA.19.080
79 VALLEYVIEW COURT,
CITY OF VAUGHAN

BASEMENT PLAN

18-11
3/16" = 1/8"

MG BM
18-11
3/16" = 1/8"

18-11
3/16" = 1/8"

18-11
3/16" = 1/8"

18-11
3/16" = 1/8"

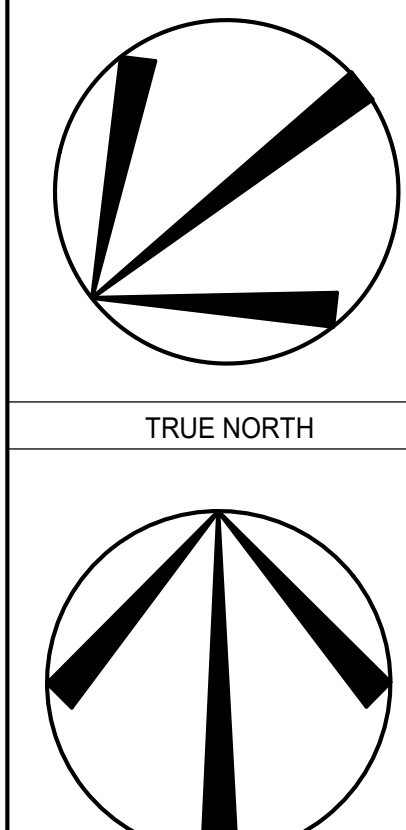
18-11
3/16" = 1/8"

18-11
3/16" = 1/8"

18-11
3/16" = 1/8"

18-11
3/16" = 1/8"

- ISSUED FOR SITE PLAN APPROVAL



TRUE NORTH
PROJECT NORTH

GROUND FLOOR GENERAL NOTES
ALL INTERIOR DOOR AND OPENING LEVELS NOT SHOWN TO BE A MIN. OF 2'-0" AFF.
ALL 4' x 8' PARTITIONS SHOWN UNLESS OTHERWISE NOTED TO BE 2" CMU OR 2" x 4" @ 16" O.C. W/ 1/2" DRYWALL BOTH SIDES
CONCRETE WALLS WITH DOUBLE TOP PLATE AND SINGLE BOTTOM PLATE DOUBLE STUDS AT ALL OPENINGS AND TRIM FLOOR TRUSS SHIP DRAWINGS FOR ALL ROOF FRAMING INFORMATION
REFER TO TRUSS SHIP DRAWINGS FOR ALL ROOF FRAMING INFORMATION
SPACE CONVENTIONAL FLOOR JOISTS @ 12" O.C. BELOW ALL CERAMIC TILE AREAS PROVIDE 1 ROW BRIDGE FOR SPANS OF 2'-0" & 2 ROWS FOR SPANS GREATER THAN 7'
CONTRACTOR TO VERIFY ALL FLOOR & ROOF TRUSSES, DIMENSIONS AND ENGINEERING. ANY DISCREPANCIES SHALL BE REPORTED TO HERS DESIGN PRIOR TO CONSTRUCTION
TOP OF STEEL @ 11'-0" AFF. UNLESS OTHERWISE NOTED

STEEL COLUMN SCHEDULE
C1 12" X 12" S.S. IN 10' X 10' X 1/2" BASE PLATE & 2-3/8" DIA. ANCHOR BOLTS
C2 12" X 12" S.S. IN 10' X 10' X 1/2" BASE PLATE W/ 2-3/8" x 4-1/2" DIA. ANCHOR BOLTS
C3 8" X 8" S.S. IN 8" X 8" X 1/2" BASE PLATE @ 4-3/8" DIA. ANCHOR BOLTS
C4 8" X 8" S.S. IN 8" X 8" X 1/2" BASE PLATE @ 4-3/8" DIA. ANCHOR BOLTS

WOODSTEEL LINTELS / WOOD BEAMS
L1 2-2X8 SPNG
L2 2-2X8 SPNG
L3 2-2X8 SPNG
L4 2-2X8 SPNG
L5 2-2X8 SPNG
L6 2-2X8 SPNG
L7 2-2X8 SPNG
L8 2-2X8 SPNG
L9 2-2X8 SPNG
L10 2-2X8 SPNG
L11 2-2X8 SPNG
L12 2-2X8 SPNG
L13 2-2X8 SPNG
L14 2-2X8 SPNG
L15 2-2X8 SPNG
L16 2-2X8 SPNG
L17 2-2X8 SPNG
L18 2-2X8 SPNG
L19 2-2X8 SPNG
L20 2-2X8 SPNG
L21 2-2X8 SPNG
L22 2-2X8 SPNG
L23 2-2X8 SPNG
L24 2-2X8 SPNG
L25 2-2X8 SPNG
L26 2-2X8 SPNG
L27 2-2X8 SPNG
L28 2-2X8 SPNG
L29 2-2X8 SPNG
L30 2-2X8 SPNG
L31 2-2X8 SPNG
L32 2-2X8 SPNG
L33 2-2X8 SPNG
L34 2-2X8 SPNG
L35 2-2X8 SPNG
L36 2-2X8 SPNG
L37 2-2X8 SPNG
L38 2-2X8 SPNG
L39 2-2X8 SPNG
L40 2-2X8 SPNG
L41 2-2X8 SPNG
L42 2-2X8 SPNG
L43 2-2X8 SPNG
L44 2-2X8 SPNG
L45 2-2X8 SPNG
L46 2-2X8 SPNG
L47 2-2X8 SPNG
L48 2-2X8 SPNG
L49 2-2X8 SPNG
L50 2-2X8 SPNG
L51 2-2X8 SPNG
L52 2-2X8 SPNG
L53 2-2X8 SPNG
L54 2-2X8 SPNG
L55 2-2X8 SPNG
L56 2-2X8 SPNG
L57 2-2X8 SPNG
L58 2-2X8 SPNG
L59 2-2X8 SPNG
L60 2-2X8 SPNG
L61 2-2X8 SPNG
L62 2-2X8 SPNG
L63 2-2X8 SPNG
L64 2-2X8 SPNG
L65 2-2X8 SPNG
L66 2-2X8 SPNG
L67 2-2X8 SPNG
L68 2-2X8 SPNG
L69 2-2X8 SPNG
L70 2-2X8 SPNG
L71 2-2X8 SPNG
L72 2-2X8 SPNG
L73 2-2X8 SPNG
L74 2-2X8 SPNG
L75 2-2X8 SPNG
L76 2-2X8 SPNG
L77 2-2X8 SPNG
L78 2-2X8 SPNG
L79 2-2X8 SPNG
L80 2-2X8 SPNG
L81 2-2X8 SPNG
L82 2-2X8 SPNG
L83 2-2X8 SPNG
L84 2-2X8 SPNG
L85 2-2X8 SPNG
L86 2-2X8 SPNG
L87 2-2X8 SPNG
L88 2-2X8 SPNG
L89 2-2X8 SPNG
L90 2-2X8 SPNG
L91 2-2X8 SPNG
L92 2-2X8 SPNG
L93 2-2X8 SPNG
L94 2-2X8 SPNG
L95 2-2X8 SPNG
L96 2-2X8 SPNG
L97 2-2X8 SPNG
L98 2-2X8 SPNG
L99 2-2X8 SPNG
L100 2-2X8 SPNG

DOOR SCHEDULE - GROUND FLOOR
1 2'-0" x 8'-0" INSULATED ENTRANCE DOOR
2 2'-0" x 8'-0" INSULATED FRONT DOOR
3 2'-0" x 8'-0" WOOD GLASS DOOR
4 2'-0" x 8'-0" x 1-3/4" EXTERIOR SLAB DOOR
5 2'-0" x 8'-0" x 1-3/4" EXTERIOR SLAB DOOR
6 2'-0" x 8'-0" x 1-3/4" EXTERIOR SLAB DOOR
7 2'-0" x 8'-0" x 1-3/4" EXTERIOR SLAB DOOR
8 2'-0" x 8'-0" x 1-3/4" EXTERIOR SLAB DOOR
9 2'-0" x 8'-0" x 1-3/4" EXTERIOR SLAB DOOR
10 2'-0" x 8'-0" x 1-3/4" EXTERIOR SLAB DOOR
11 2'-0" x 8'-0" x 1-3/4" EXTERIOR SLAB DOOR
12 2'-0" x 8'-0" x 1-3/4" EXTERIOR SLAB DOOR
13 2'-0" x 8'-0" x 1-3/4" EXTERIOR SLAB DOOR
14 2'-0" x 8'-0" x 1-3/4" EXTERIOR SLAB DOOR
15 2'-0" x 8'-0" x 1-3/4" EXTERIOR SLAB DOOR
16 2'-0" x 8'-0" x 1-3/4" EXTERIOR SLAB DOOR
17 2'-0" x 8'-0" x 1-3/4" EXTERIOR SLAB DOOR
18 2'-0" x 8'-0" x 1-3/4" EXTERIOR SLAB DOOR
19 2'-0" x 8'-0" x 1-3/4" EXTERIOR SLAB DOOR
20 2'-0" x 8'-0" x 1-3/4" EXTERIOR SLAB DOOR
21 2'-0" x 8'-0" x 1-3/4" EXTERIOR SLAB DOOR
22 2'-0" x 8'-0" x 1-3/4" EXTERIOR SLAB DOOR
23 2'-0" x 8'-0" x 1-3/4" EXTERIOR SLAB DOOR
24 2'-0" x 8'-0" x 1-3/4" EXTERIOR SLAB DOOR
25 2'-0" x 8'-0" x 1-3/4" EXTERIOR SLAB DOOR
26 2'-0" x 8'-0" x 1-3/4" EXTERIOR SLAB DOOR
27 2'-0" x 8'-0" x 1-3/4" EXTERIOR SLAB DOOR
28 2'-0" x 8'-0" x 1-3/4" EXTERIOR SLAB DOOR
29 2'-0" x 8'-0" x 1-3/4" EXTERIOR SLAB DOOR
30 2'-0" x 8'-0" x 1-3/4" EXTERIOR SLAB DOOR
31 2'-0" x 8'-0" x 1-3/4" EXTERIOR SLAB DOOR
32 2'-0" x 8'-0" x 1-3/4" EXTERIOR SLAB DOOR
33 2'-0" x 8'-0" x 1-3/4" EXTERIOR SLAB DOOR
34 2'-0" x 8'-0" x 1-3/4" EXTERIOR SLAB DOOR
35 2'-0" x 8'-0" x 1-3/4" EXTERIOR SLAB DOOR
36 2'-0" x 8'-0" x 1-3/4" EXTERIOR SLAB DOOR
37 2'-0" x 8'-0" x 1-3/4" EXTERIOR SLAB DOOR
38 2'-0" x 8'-0" x 1-3/4" EXTERIOR SLAB DOOR
39 2'-0" x 8'-0" x 1-3/4" EXTERIOR SLAB DOOR
40 2'-0" x 8'-0" x 1-3/4" EXTERIOR SLAB DOOR
41 2'-0" x 8'-0" x 1-3/4" EXTERIOR SLAB DOOR
42 2'-0" x 8'-0" x 1-3/4" EXTERIOR SLAB DOOR
43 2'-0" x 8'-0" x 1-3/4" EXTERIOR SLAB DOOR
44 2'-0" x 8'-0" x 1-3/4" EXTERIOR SLAB DOOR
45 2'-0" x 8'-0" x 1-3/4" EXTERIOR SLAB DOOR
46 2'-0" x 8'-0" x 1-3/4" EXTERIOR SLAB DOOR
47 2'-0" x 8'-0" x 1-3/4" EXTERIOR SLAB DOOR
48 2'-0" x 8'-0" x 1-3/4" EXTERIOR SLAB DOOR
49 2'-0" x 8'-0" x 1-3/4" EXTERIOR SLAB DOOR
50 2'-0" x 8'-0" x 1-3/4" EXTERIOR SLAB DOOR
51 2'-0" x 8'-0" x 1-3/4" EXTERIOR SLAB DOOR
52 2'-0" x 8'-0" x 1-3/4" EXTERIOR SLAB DOOR
53 2'-0" x 8'-0" x 1-3/4" EXTERIOR SLAB DOOR
54 2'-0" x 8'-0" x 1-3/4" EXTERIOR SLAB DOOR
55 2'-0" x 8'-0" x 1-3/4" EXTERIOR SLAB DOOR
56 2'-0" x 8'-0" x 1-3/4" EXTERIOR SLAB DOOR
57 2'-0" x 8'-0" x 1-3/4" EXTERIOR SLAB DOOR
58 2'-0" x 8'-0" x 1-3/4" EXTERIOR SLAB DOOR
59 2'-0" x 8'-0" x 1-3/4" EXTERIOR SLAB DOOR
60 2'-0" x 8'-0" x 1-3/4" EXTERIOR SLAB DOOR
61 2'-0" x 8'-0" x 1-3/4" EXTERIOR SLAB DOOR
62 2'-0" x 8'-0" x 1-3/4" EXTERIOR SLAB DOOR
63 2'-0" x 8'-0" x 1-3/4" EXTERIOR SLAB DOOR
64 2'-0" x 8'-0" x 1-3/4" EXTERIOR SLAB DOOR
65 2'-0" x 8'-0" x 1-3/4" EXTERIOR SLAB DOOR
66 2'-0" x 8'-0" x 1-3/4" EXTERIOR SLAB DOOR
67 2'-0" x 8'-0" x 1-3/4" EXTERIOR SLAB DOOR
68 2'-0" x 8'-0" x 1-3/4" EXTERIOR SLAB DOOR
69 2'-0" x 8'-0" x 1-3/4" EXTERIOR SLAB DOOR
70 2'-0" x 8'-0" x 1-3/4" EXTERIOR SLAB DOOR
71 2'-0" x 8'-0" x 1-3/4" EXTERIOR SLAB DOOR
72 2'-0" x 8'-0" x 1-3/4" EXTERIOR SLAB DOOR
73 2'-0" x 8'-0" x 1-3/4" EXTERIOR SLAB DOOR
74 2'-0" x 8'-0" x 1-3/4" EXTERIOR SLAB DOOR
75 2'-0" x 8'-0" x 1-3/4" EXTERIOR SLAB DOOR
76 2'-0" x 8'-0" x 1-3/4" EXTERIOR SLAB DOOR
77 2'-0" x 8'-0" x 1-3/4" EXTERIOR SLAB DOOR
78 2'-0" x 8'-0" x 1-3/4" EXTERIOR SLAB DOOR
79 2'-0" x 8'-0" x 1-3/4" EXTERIOR SLAB DOOR
80 2'-0" x 8'-0" x 1-3/4" EXTERIOR SLAB DOOR
81 2'-0" x 8'-0" x 1-3/4" EXTERIOR SLAB DOOR
82 2'-0" x 8'-0" x 1-3/4" EXTERIOR SLAB DOOR
83 2'-0" x 8'-0" x 1-3/4" EXTERIOR SLAB DOOR
84 2'-0" x 8'-0" x 1-3/4" EXTERIOR SLAB DOOR
85 2'-0" x 8'-0" x 1-3/4" EXTERIOR SLAB DOOR
86 2'-0" x 8'-0" x 1-3/4" EXTERIOR SLAB DOOR
87 2'-0" x 8'-0" x 1-3/4" EXTERIOR SLAB DOOR
88 2'-0" x 8'-0" x 1-3/4" EXTERIOR SLAB DOOR
89 2'-0" x 8'-0" x 1-3/4" EXTERIOR SLAB DOOR
90 2'-0" x 8'-0" x 1-3/4" EXTERIOR SLAB DOOR
91 2'-0" x 8'-0" x 1-3/4" EXTERIOR SLAB DOOR
92 2'-0" x 8'-0" x 1-3/4" EXTERIOR SLAB DOOR
93 2'-0" x 8'-0" x 1-3/4" EXTERIOR SLAB DOOR
94 2'-0" x 8'-0" x 1-3/4" EXTERIOR SLAB DOOR
95 2'-0" x 8'-0" x 1-3/4" EXTERIOR SLAB DOOR
96 2'-0" x 8'-0" x 1-3/4" EXTERIOR SLAB DOOR
97 2'-0" x 8'-0" x 1-3/4" EXTERIOR SLAB DOOR
98 2'-0" x 8'-0" x 1-3/4" EXTERIOR SLAB DOOR
99 2'-0" x 8'-0" x 1-3/4" EXTERIOR SLAB DOOR
100 2'-0" x 8'-0" x 1-3/4" EXTERIOR SLAB DOOR

DESIGN LOADS - ASPHALT SHINGLES
TOP CHORD = 15 PSF (0.7 kN/m)
BOTTOM CHORD = 5 PSF (0.2 kN/m)
TOP CHORD = 34 PSF (1.6 kN/m)
BOTTOM CHORD = 5 PSF (0.2 kN/m)

WALL LEGEND
VARYING WALL HEIGHT
DOUBLE VOLUME WALL
LOAD BEARING WALL

INTERIOR 90 MIN. FIRE RATED WALL
SCALE 1/2"=1'-0"
- 2 LAYERS OF 5/8" TYPE 'X' GYPSUM BOARD
- 2" x 4" SPRUCE STUDS STAGGERED @ 16" O.C. ON DRY BLOW-IN CELLULOSE FIBRE
- R12 SPRAY FOAM INSULATION
- 2 LAYERS OF 5/8" TYPE 'X' GYPSUM BOARD
- R10 CONTINUOUS INSULATION

TYPICAL INTERIOR 90 MIN. FIRE RATED WALL
SCALE 1/2"=1'-0"
- 90 MIN. FIRE RATED FLOOR
- 5/8" TAG SPRUCE PLYWOOD ON 16" ENG. FLOOR JOISTS @ 12" O.C.
- DRY BLOW-IN CELLULOSE FIBRE
- W/ MIN. DENSITY 40kg/m³ FILLING THE ENTIRE CAVITY
- RESILIENT METAL CHANNELS @ 16" O.C.
- 2 LAYERS 5/8" TYPE 'X' GYPSUM BOARD

TYPICAL 90 MIN. FIRE RATED FLOOR
SCALE 1/2"=1'-0"
- 90 MIN. FIRE RATED FLOOR
- 5/8" TAG SPRUCE PLYWOOD ON 16" ENG. FLOOR JOISTS @ 12" O.C.
- DRY BLOW-IN CELLULOSE FIBRE
- W/ MIN. DENSITY 40kg/m³ FILLING THE ENTIRE CAVITY
- RESILIENT METAL CHANNELS @ 16" O.C.
- 2 LAYERS 5/8" TYPE 'X' GYPSUM BOARD

REVISIONS

DARREN & DANIELE MCNAIR
DA 19.080
79 VALLEYVIEW COURT,
CITY OF VAUGHAN

GROUND FLOOR PLAN

MG BM
18-11
3/16" = 1'0"

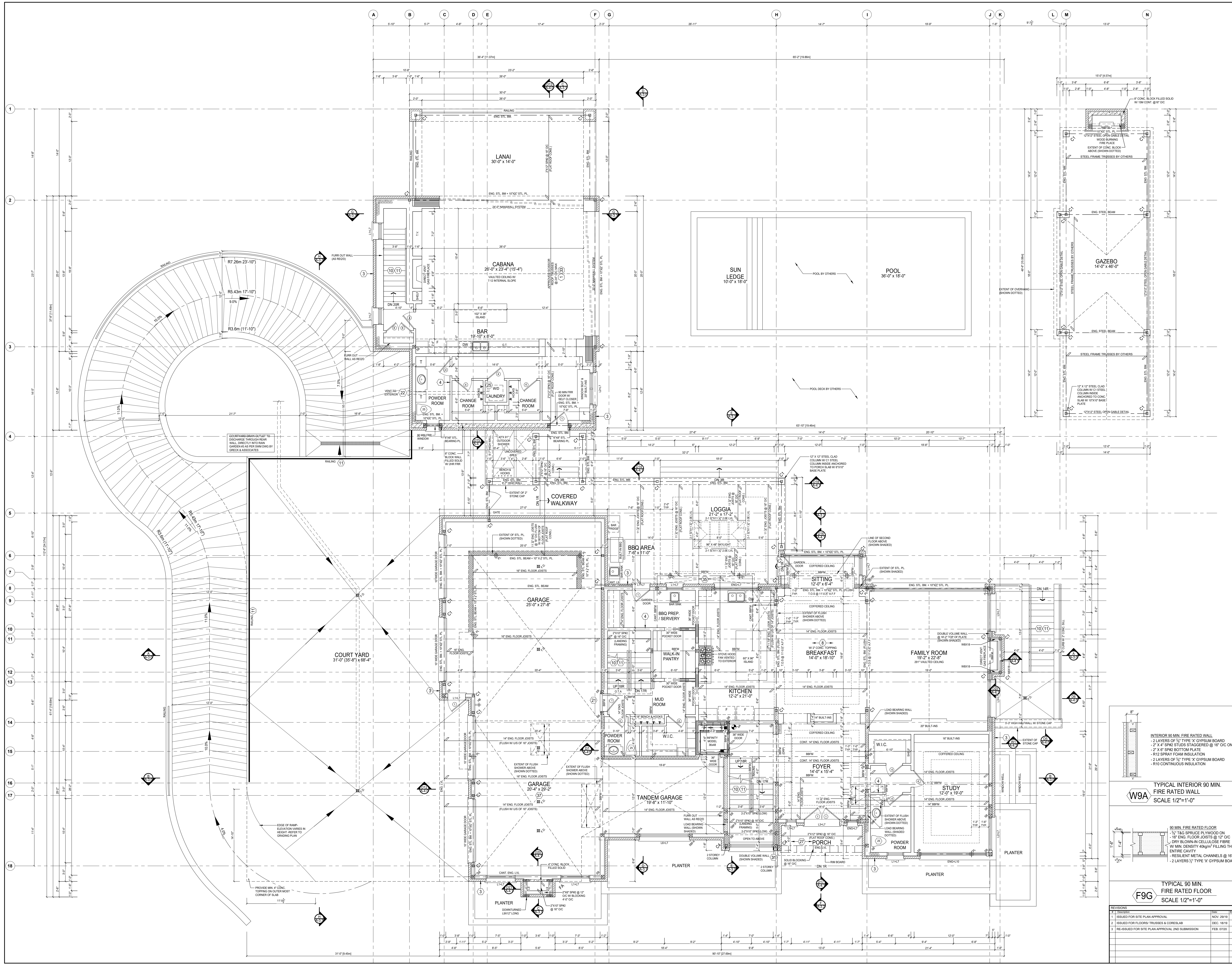
ISSUED FOR SITE PLAN APPROVAL

ISSUED FOR FLOORS TRUSSES & CORESLAB

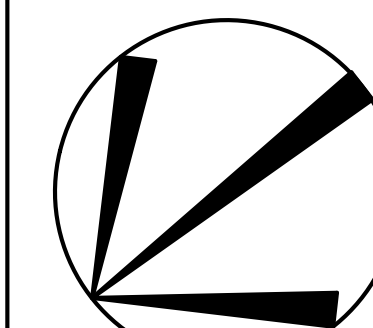
RE-ISSUED FOR SITE PLAN APPROVAL 2ND SUBMISSION

NOV. 29/19 BM
DEC. 18/19 BM
FEB. 07/20 BM

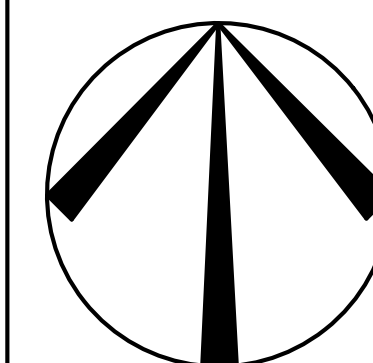
NOV. 29/19 BM
DEC. 18/19 BM
FEB. 07/20 BM



IAN ROBERTSON DESIGN
1000 SHEPPARD AVENUE EAST, SUITE 100, SCARBOROUGH, ONTARIO M1S 1T7
TEL: (416) 291-1111
WWW.IANROBERTSONDESIGN.COM



TRUE NORTH



PROJECT NORTH

SECOND FLOOR GENERAL NOTES

- 1. ALL INTERIOR DOOR AND OPENING LANTER NOT SHOWN TO BE A MIN. OF 2'-2 1/2" SFINZ
- 2. ALL 4" P PARTITIONS SHOWN UNLESS OTHERWISE NOTED TO BE 2" OR 3" P @ 16" OC W/ 1" STYPAL BOTH SIDES
- 3. PROVIDE WALLS WITH DOUBLE TOP PLATE AND SINGLE BOTTOM PLATE, DOUBLE STUDS AT ALL OPENINGS AND TRIPLE STUDS @ CORNERS
- 4. REFER TO TRUSS SHOP DRAWINGS FOR ALL ROOF FRAMING INFORMATION
- 5. CONTRACTOR TO VERIFY ALL FLOOR & ROOF TRUSSES, DIMENSIONS AND ENGINEERING. ANY DISCREPANCIES SHALL BE REPORTED TO THESE DESIGNERS PRIOR TO CONSTRUCTION.

STEEL COLUMN SCHEDULE

- C1 1/4" X 1/4" U.S.S. W/ 2" X 1/2" X 1/2" BASE PLATE & 3/4" DIA. ANCHOR BOLTS
- C2 1/2" DIA. 1/4" THICK W/ 1/2" X 1/2" X 1/2" BASE PL W/ 2-3/4" X 4-1/4" DIA. ANCHOR BOLTS
- C3 2" X 2" X 1/4" THICK W/ 1/2" X 1/2" X 1/2" BASE PLATE @ 4-3/4" DIA. ANCHOR BOLTS
- C4 2" X 2" X 1/4" THICK W/ 1/2" X 1/2" X 1/2" BASE PLATE @ 4-3/4" DIA. ANCHOR BOLTS

WOOD STEEL LINTELS / WOOD BEAMS

- L1 2-2" X 8" SPK
- L2 2-2" X 8" SPK
- L3 2-2" X 8" SPK
- L4 2-2" X 8" SPK
- L5 2-2" X 8" SPK
- L6 2-2" X 8" SPK
- L7 3-1/2" X 3-1/2" X 1/2" (2000000) WBS
- L8 3-1/2" X 3-1/2" X 1/2" (2000000) WBS
- L9 4" X 3-1/2" X 1/2" (2000000) WBS
- L10 3-1/2" X 3-1/2" X 1/2" (2000000) WBS
- L11 3-1/2" X 3-1/2" X 1/2" (2000000) WBS
- L12 1/4" X 4" X 3/8" (2000000) WBS

DOOR SCHEDULE - SECOND FLOOR

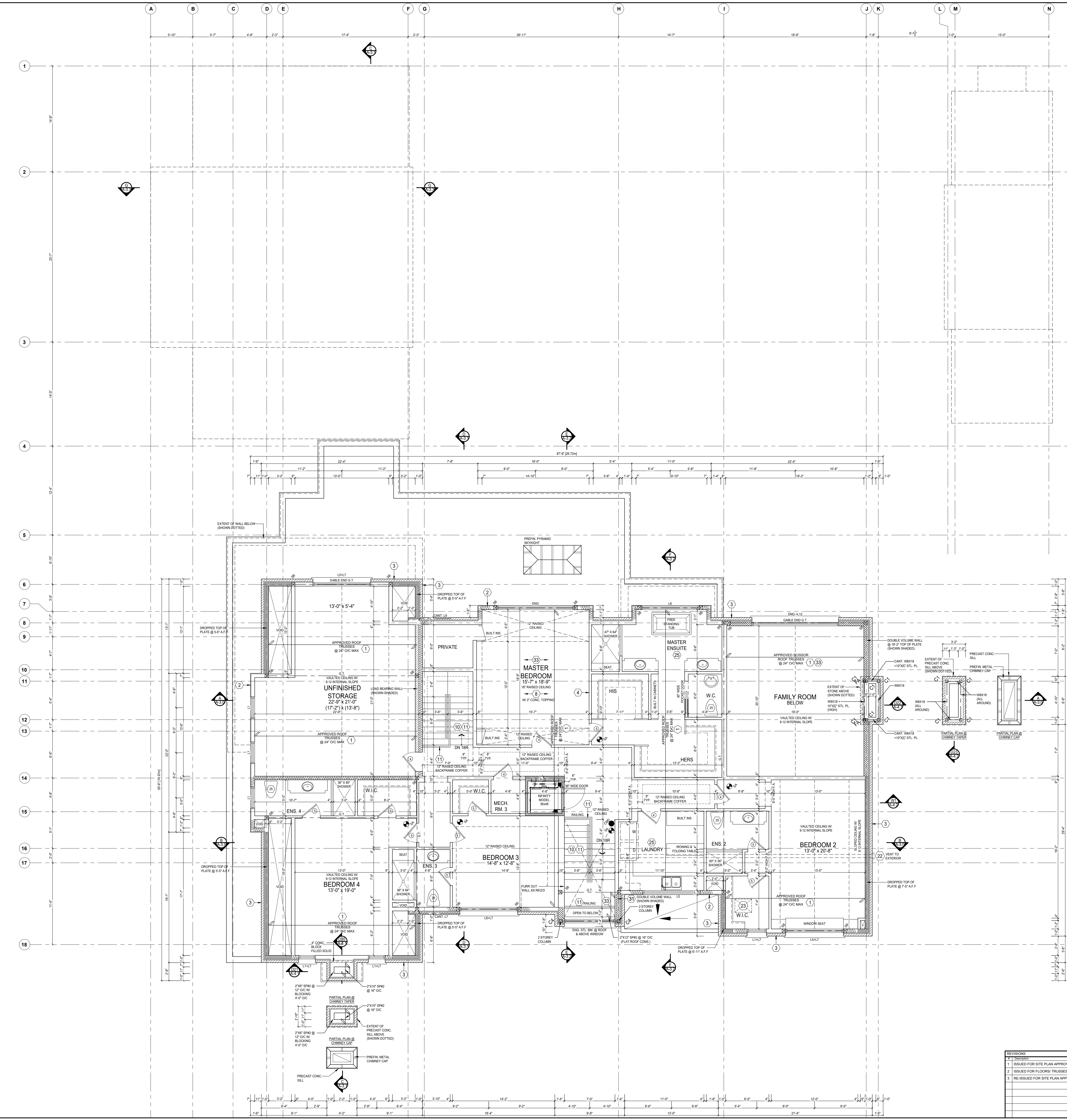
- 1 2'-10" X 8'-0" - INSULATED ENTRANCE DOOR
- 2 2'-8" X 8'-0" - INSULATED FRONT DOOR
- 3 2'-8" X 8'-0" - WOOD & GLASS DOOR
- 4 2'-8" X 8'-0" - WOOD & GLASS DOOR
- 5 2'-8" X 8'-0" X 1-3/8" - INTERIOR SLAB DOOR
- 6 2'-8" X 8'-0" X 1-3/8" - INTERIOR SLAB DOOR
- 7 2'-8" X 8'-0" X 1-3/8" - INTERIOR SLAB DOOR
- 8 2'-8" X 8'-0" X 1-3/8" - INTERIOR SLAB DOOR
- 9 2'-8" X 8'-0" X 1-3/8" - INTERIOR SLAB DOOR
- 10 2'-8" X 8'-0" X 1-3/8" - INTERIOR SLAB DOOR

DESIGN LOADS - ASPHALT SHINGLES

- DEAD LOAD TOP CHORD = 18 PSF (0.7 kN/m²)
- BOTTOM CHORD = 1 PSF (0.04 kN/m²)
- WIND LOAD TOP CHORD = 34 PSF (1.6 kN/m²)
- BOTTOM CHORD = 6 PSF (0.3 kN/m²)

WALL LEGEND

- VARYING WALL HEIGHT
- DOUBLE VOLUME WALL
- LOAD BEARING WALL



DARREN & DANIELE MCNAIR

DA.19.080
79 VALLEYVIEW COURT,
CITY OF VAUGHAN

SECOND FLOOR PLAN

NO.	DESCRIPTION	DATE	BY	CHKD.
1	ISSUED FOR SITE PLAN APPROVAL	NOV. 28/19	BM	MG
2	ISSUED FOR FLOORS, TRUSSES & CORE/LAB	DEC. 18/19	BM	MG
3	RE-ISSUED FOR SITE PLAN APPROVAL 2ND SUBMISSION	FEB. 07/20	BM	MG

MG BM

18-11

3/16" = 1" 0"

A-1.3

ANROBERTSONDESIGN
- ISSUED FOR SITE PLAN APPROVAL