

**1**  
**A2** **PROPOSED BASEMENT FLOOR PLAN**  
SCALE: 1/8"=1'-0"

## ATTACHMENT 4

### LEMCAD CONSULTANTS

817 COSBURN AVENUE, Toronto, Ontario M4C 2V9  
PHONE: (416) 405-8164 FAX: (416) 405-9601

**A2**

PROJECT: PROPOSED ADDITION AND INT. ALTERATIONS

LOCATION: 10 RICHARD LOVAT COURT, KLEINBERG

DWG. BY: PD

CK'D BY: LM

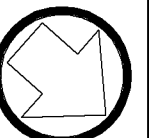
APP. BY:

DATE: OCT. 28, 2019

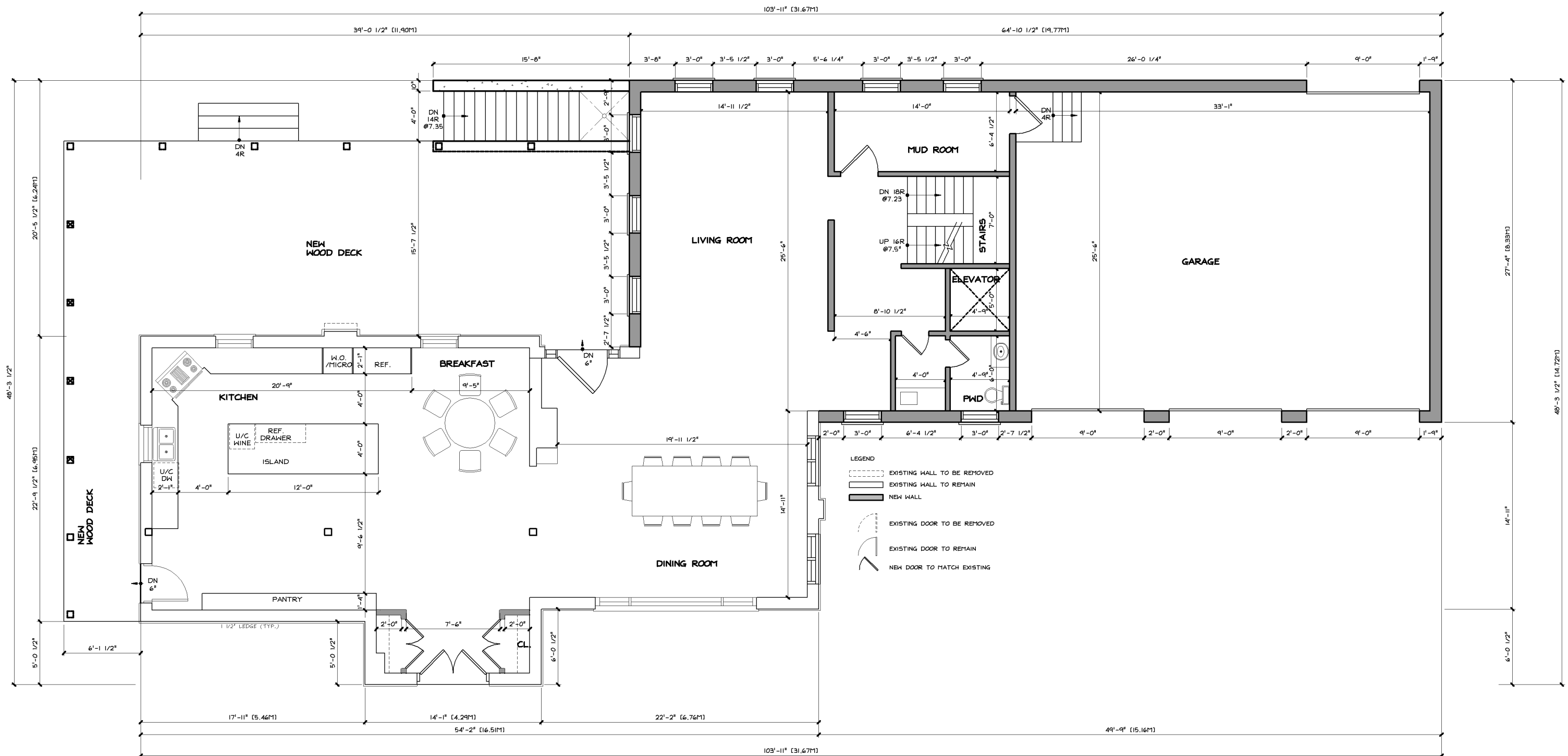
JOB NO.:

DWG. NO.: A2 OF 10

CADD-NAME:



ORIENTATION



**1**  
**A3** **PROPOSED**  
**GROUND FLOOR PLAN**  
SCALE: 1/8"=1'-0"

# **LEMCAD CONSULTANTS**

817 COSBURN AVENUE, Toronto, Ontario M4C 2V9  
PHONE: (416) 405-8164 FAX: (416) 405-9601

**A3**

PROJECT: PROPOSED ADDITION AND INT. ALTERATIONS

LOCATION: 10 RICHARD LOVAT COURT, KLEINBERG

DWG. BY: PD

CK'D BY: LM

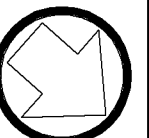
APP. BY:

DATE: OCT. 28, 2019

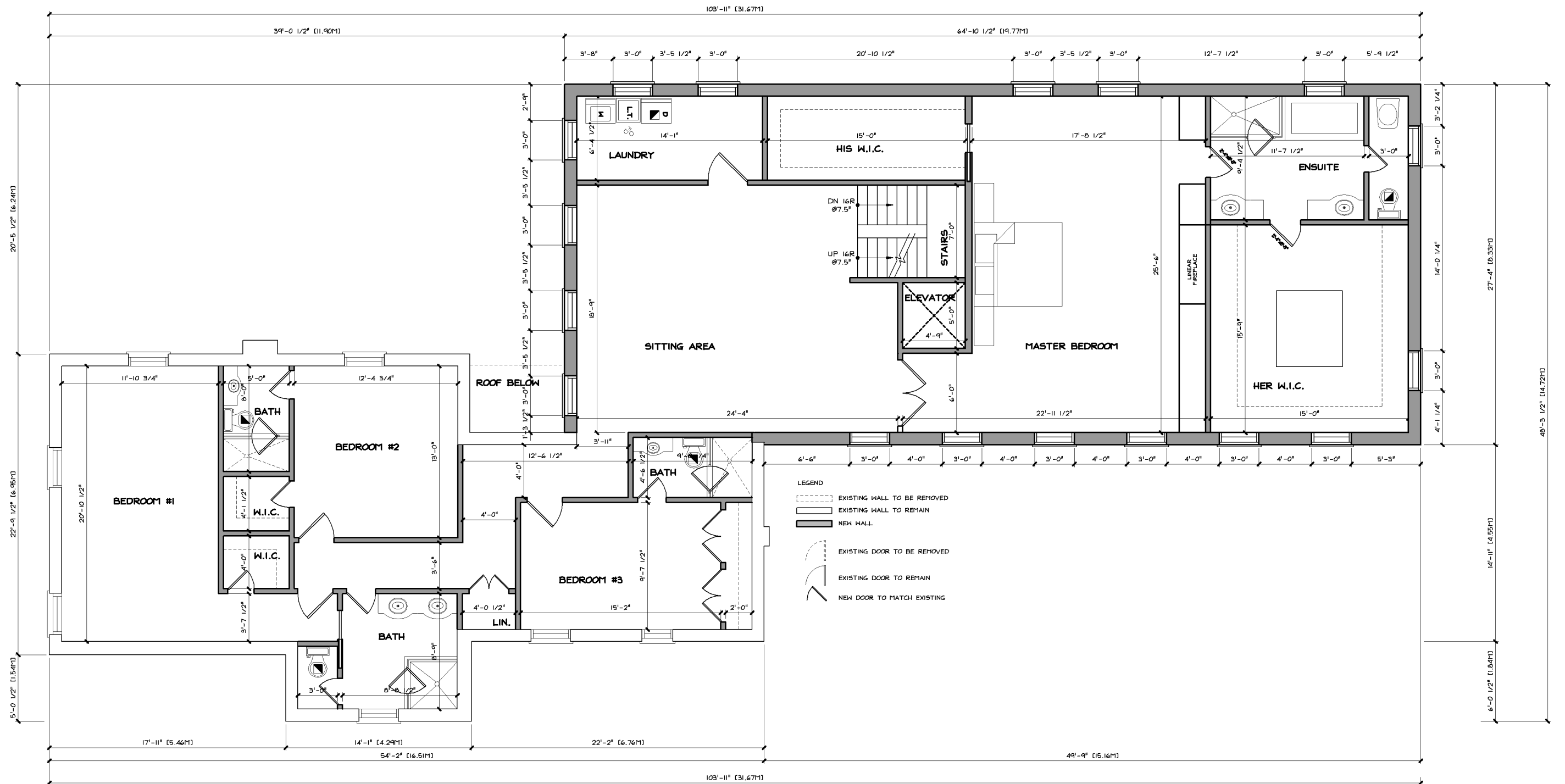
JOB NO.:

DWG. NO.: A3 OF 10

CADD-NAME:



ORIENTATION



**1**  
**PROPOSED**  
**SECOND FLOOR PLAN**  
SCALE: 1/8"=1'-0"

**LEMCAD CONSULTANTS**

817 COSBURN AVENUE, Toronto, Ontario M4C 2V9  
PHONE: (416) 405-8164 FAX: (416) 405-9601

**A4**

PROJECT: PROPOSED ADDITION AND INT. ALTERATIONS

LOCATION: 10 RICHARD LOVAT COURT, KLEINBERG

DWG. BY: PD

CK'D BY: LM

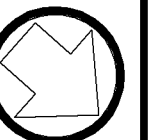
APP. BY:

DATE: OCT. 28, 2019

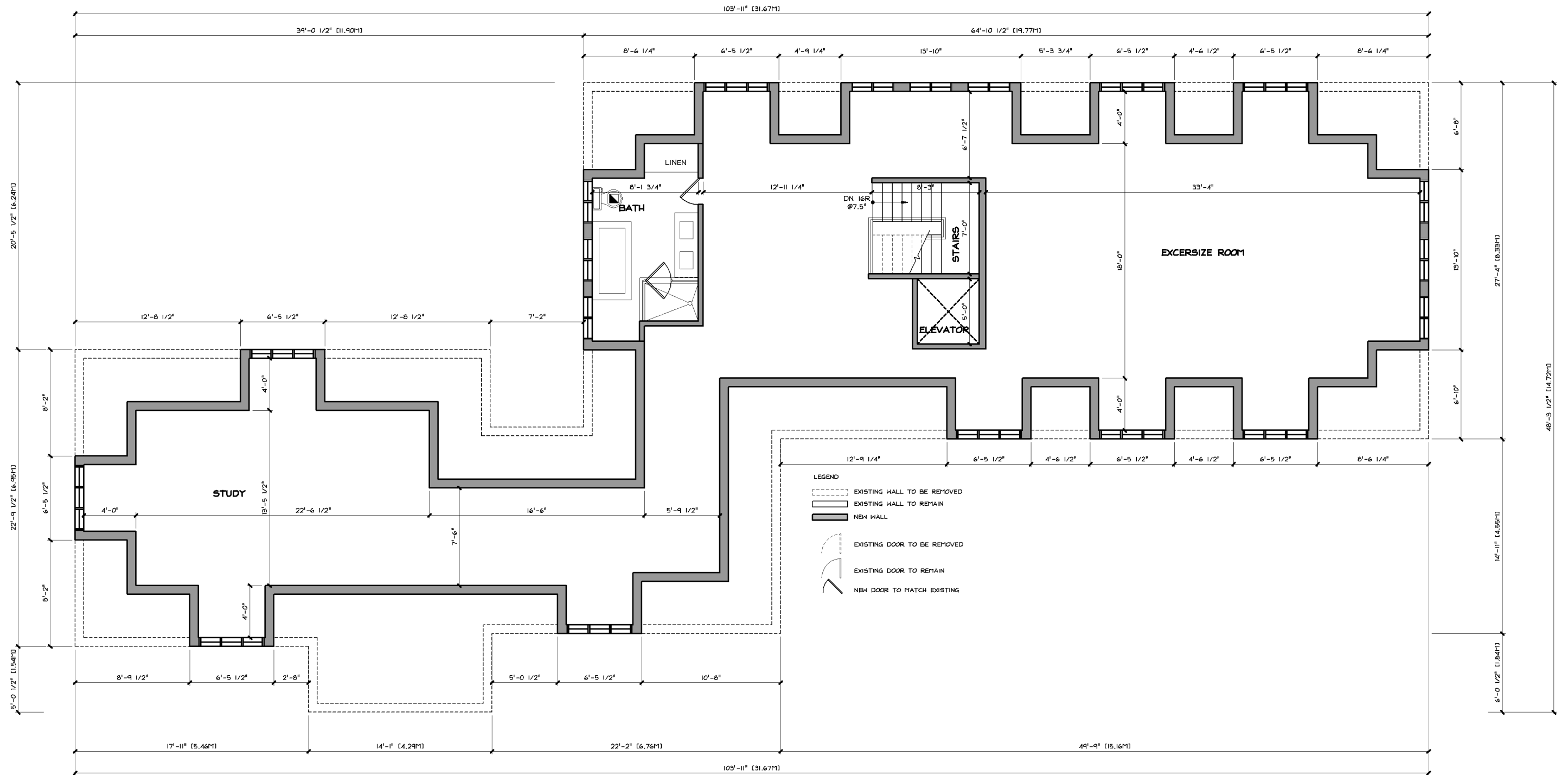
JOB NO.:

DWG. NO.: A4 OF 10

CADD-NAME:



ORIENTATION



**PROPOSED  
THIRD FLOOR PLAN**  
SCALE: 1/8"=1'-0"

# **LEMCAD CONSULTANTS**

817 COSBURN AVENUE, Toronto, Ontario M4C 2V9  
PHONE: (416) 405-8164 FAX: (416) 405-9601

**A5**

PROJECT: PROPOSED ADDITION AND INT. ALTERATIONS

LOCATION: 10 RICHARD LOVAT COURT, KLEINBERG

DWG. BY: PD

CK'D BY: LM

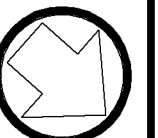
APP. BY:

DATE: OCT. 28, 2019

JOB NO.:

DWG. NO.: A5 OF 10

CADD-NAME:



ORIENTATION