

VMC Parking Pilot Project Pay-and-Display On-Street Parking

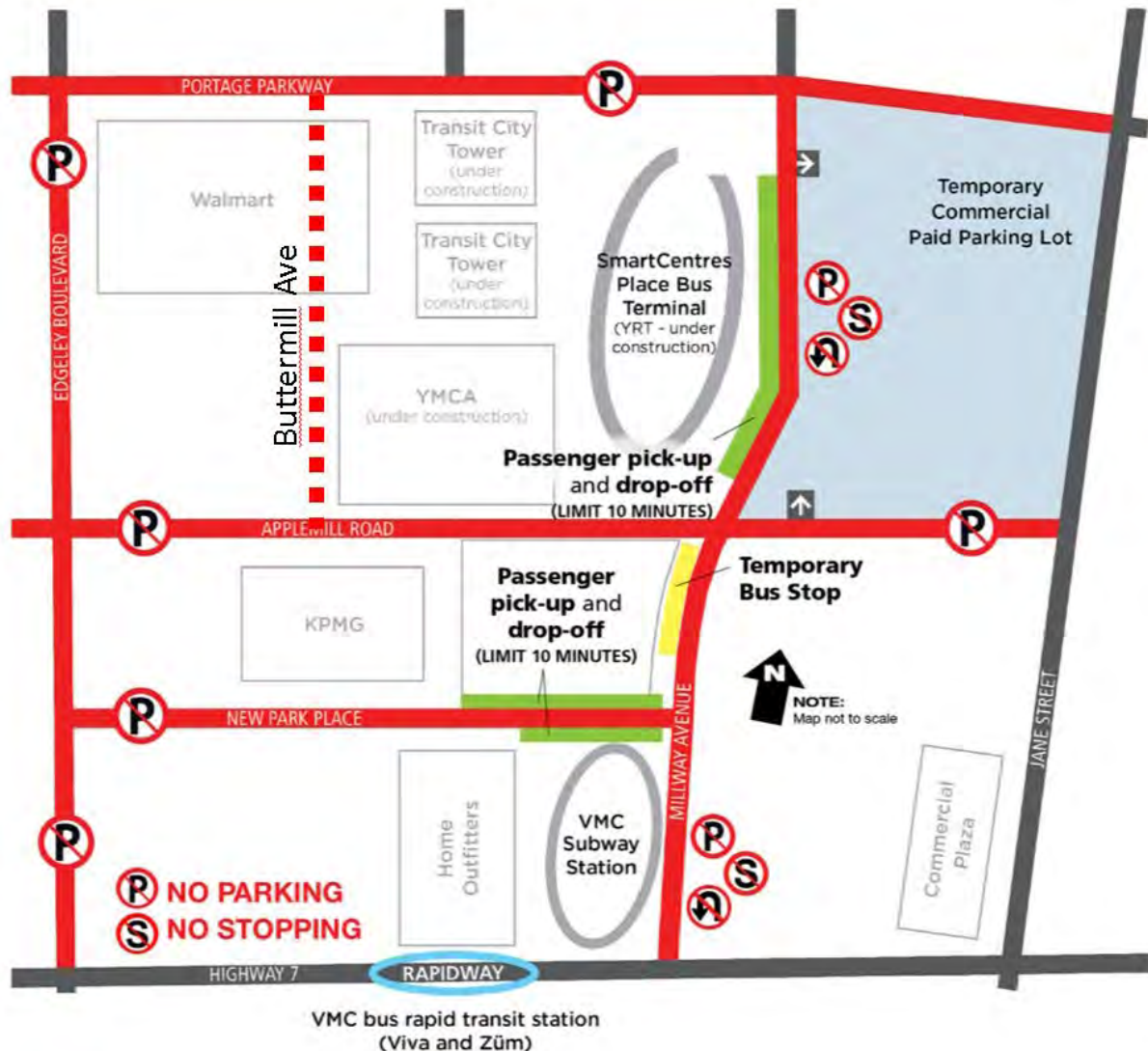


DOWNTOWN

vaughan

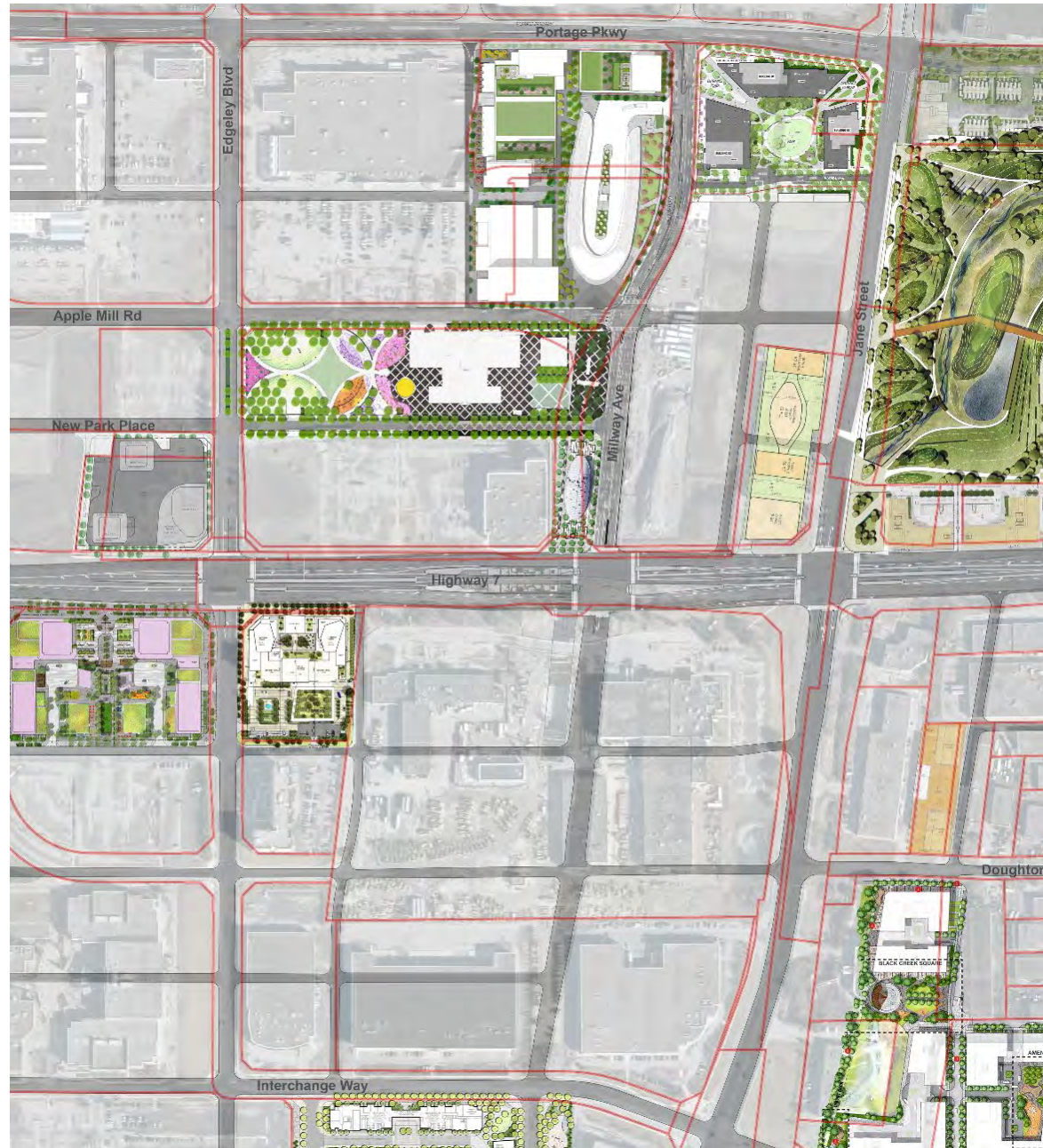
METROPOLITAN CENTRE

VMC Parking Strategy: Phase 1



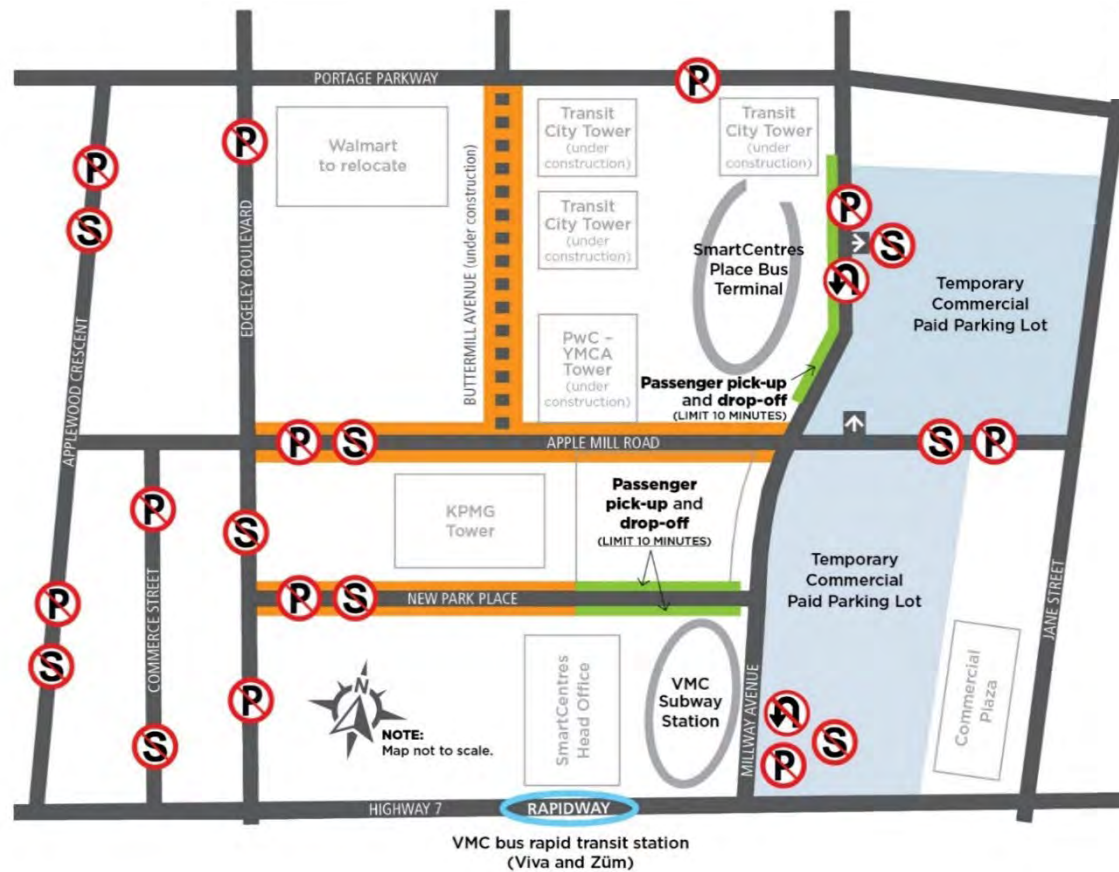
- Subway Opening, December 2017
- Parking prohibitions implemented on all surrounding streets to the Subway
- 10-minute maximum parking permitted in passenger pick-up/drop-off (PPUDO) areas on New Park Place and Millway Ave

Current Situation



- Booming development activity
- Increasing demand for on-street parking
- Over utilized existing passenger pick-up/drop-off (PPUDO) areas
- Increasing demand for curbside deliveries due to pandemic




Proposed Locations



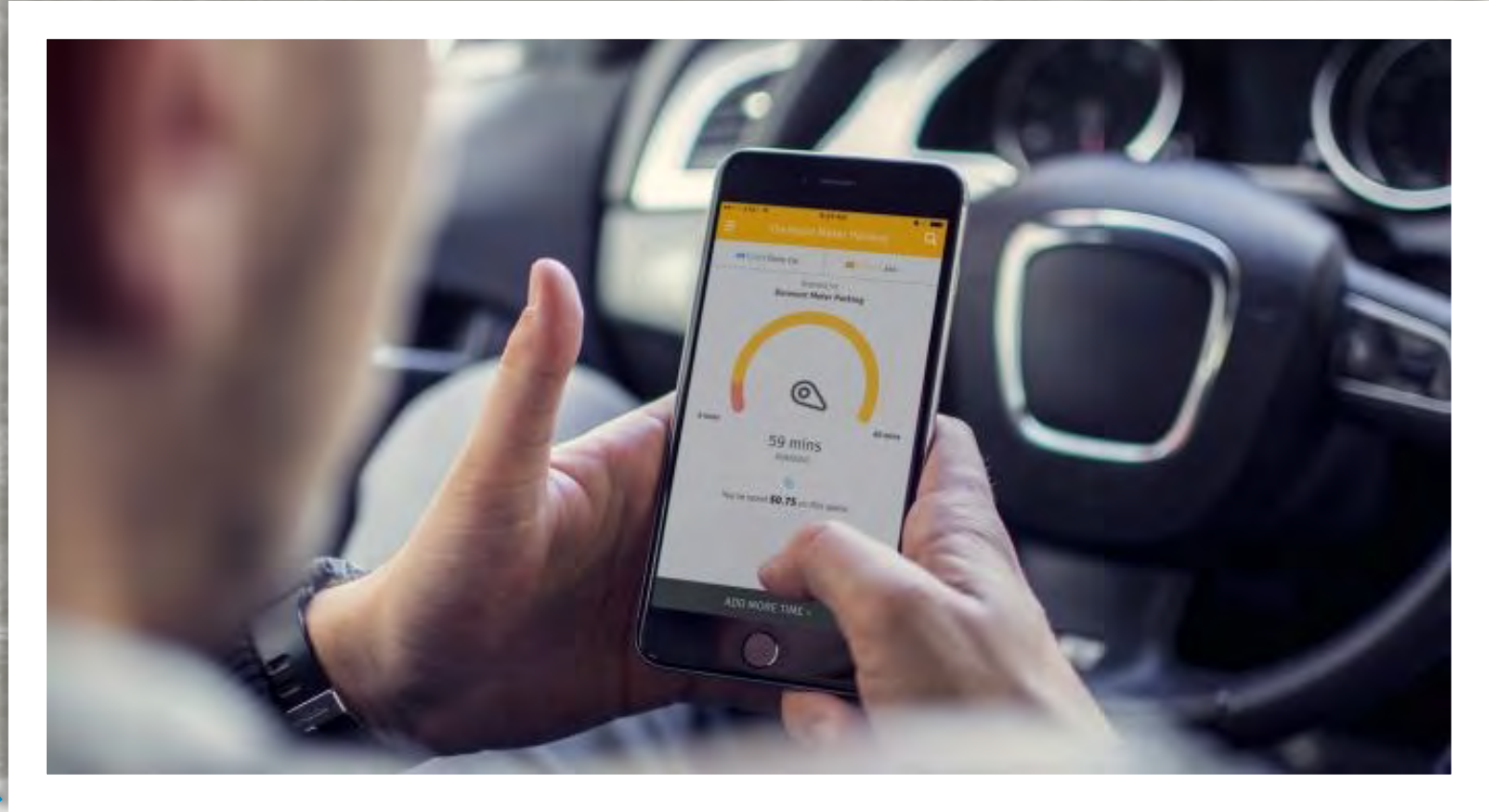
Three streets are considered as part of the Pilot in VMC's Mobility Hub:

- New Park Place (Edgeley to Millway)
- Applemill Road (Edgeley to Millway)
- Future Buttermill Avenue (Portage to Applemill)

LEGEND:

-  Parking pilot areas
-  Passenger pick-up | drop-off (limit 10 minutes)
-  Temporary commercial paid parking lot
- No parking** on surrounding streets

-  **NO Parking**
-  **NO Stopping**
7 a.m. - 9 a.m.
4 p.m. - 6 p.m.



Financial Considerations

- 2-year cost is estimated at \$350K
 1. Includes the installation/removal, maintenance, repairs, revenue collection fees and leasing of 14 parking meters.
 2. Does not include potential additional costs for enforcement and road maintenance above the existing identified dedications.

Financial Considerations continued

- Approximately 7% parking utilization/uptake (1.5 hours of day) required to offset operating costs (i.e. revenue neutral)
- 25% parking utilization/uptake (6 hours of day) would result in approximately \$1M revenue annually

Next Steps

- Receive Council endorsement to Pilot Project for 2-years
- Amend traffic bylaws to permit paid on-street parking
- Retain Vendor to delivery project by fall 2020
- Install parking meters by the end of 2020

