

Context Location Map

LOCATION:
Part of Lots 28 & 29, Concession 8

APPLICANT: East Kleinburg Developments Inc. /
1045501 Ontario Limited

N:\GIS_Archive\Attachments\OP\op.17.008.dwg



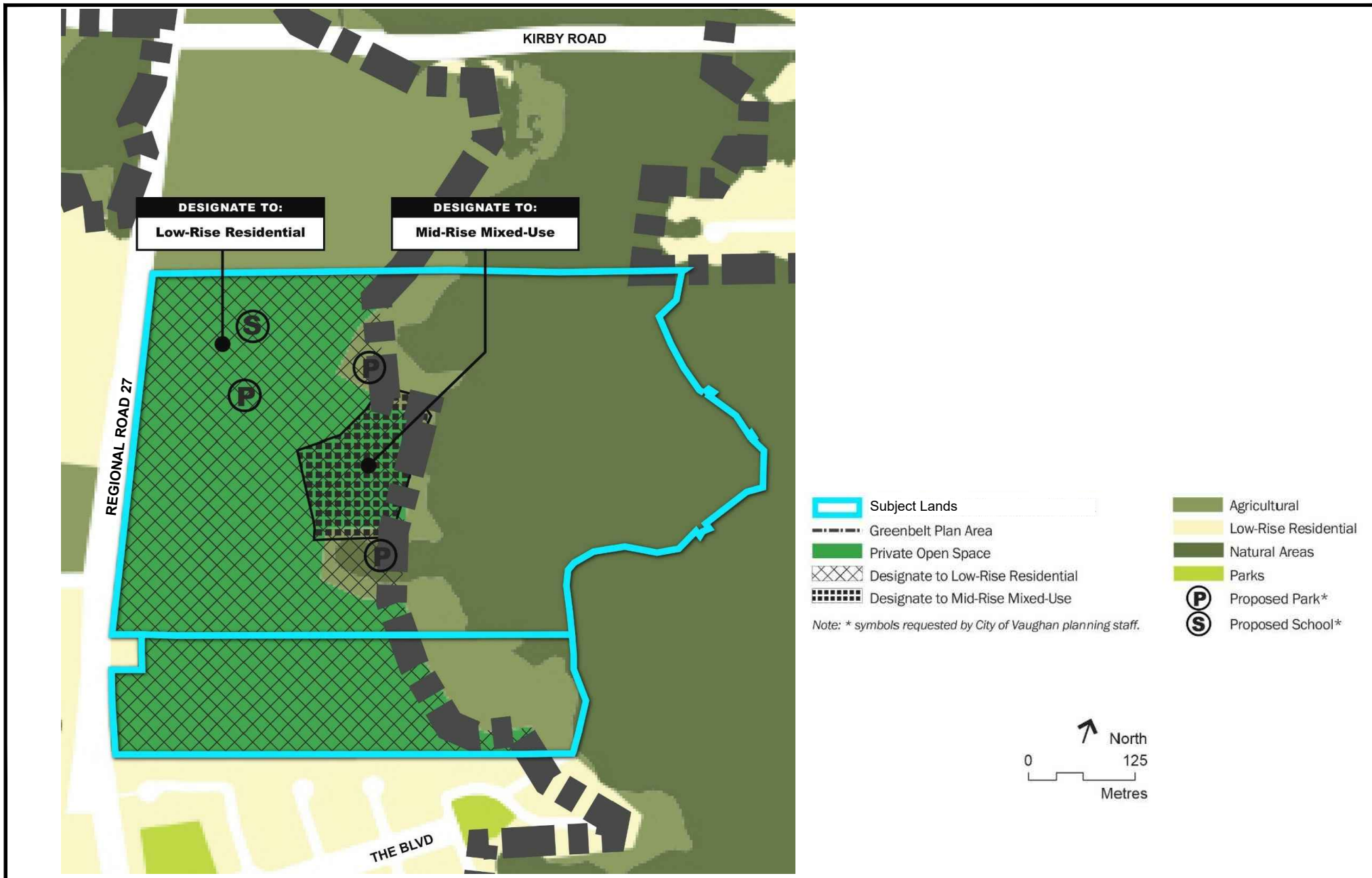
Attachment

FILE:
OP.17.008

DATE:
February 5, 2019

1





Proposed Land Use - File OP.17.008

APPLICANT: East Kleinburg Developments Inc. / 1045501 Ontario Limited
LOCATION: Part of Lots 28 & 29, Concession 8

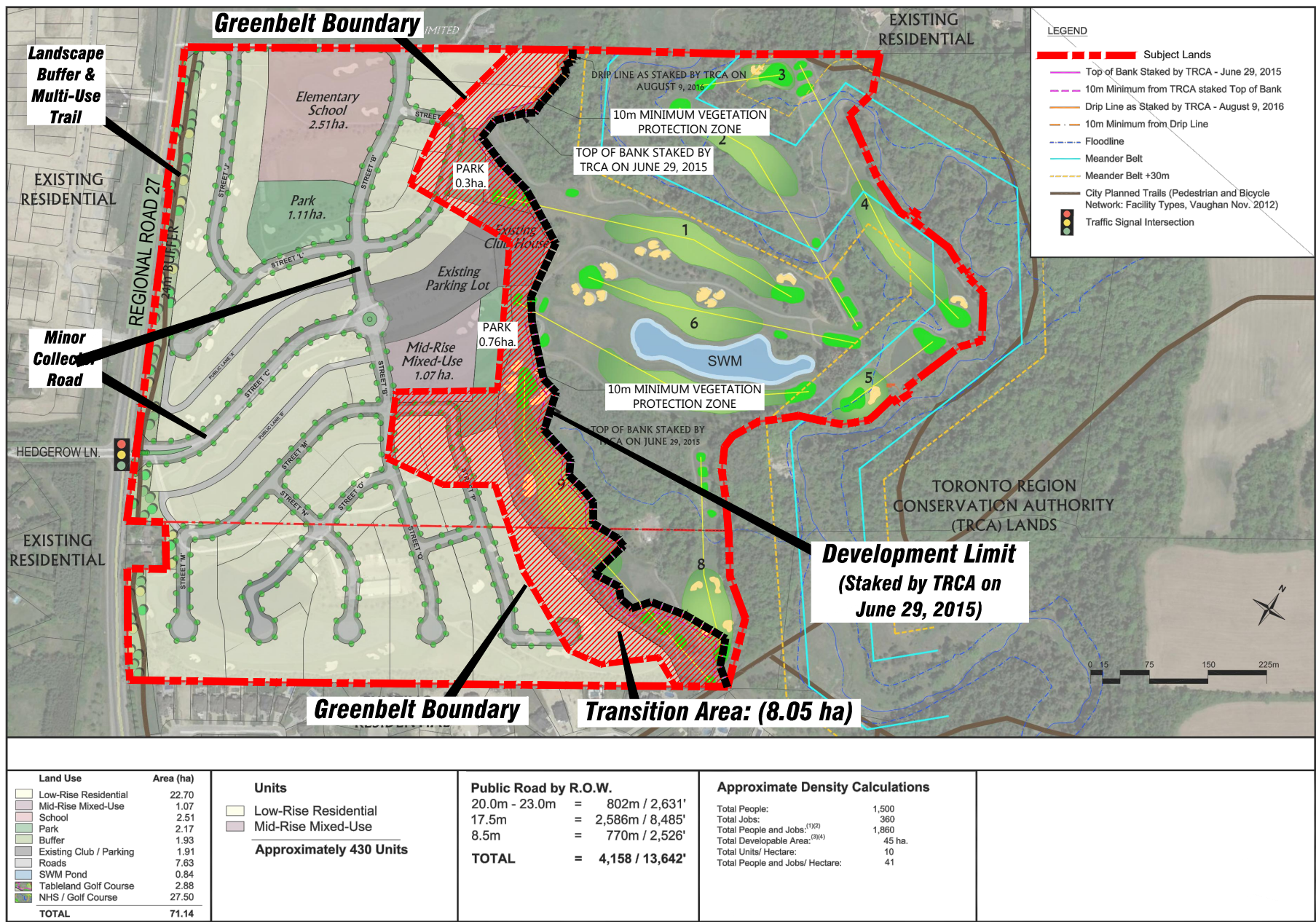


Attachment

FILE:
OP.17.008

DATE:
February 5, 2019

3



Concept Plan

LOCATION:
Part of Lots 28 & 29, Concession 8

APPLICANT: East Kleinburg Developments Inc. /
1045501 Ontario Limited

N:\GIS_Archive\Attachments\OP\op.17.008.dwg

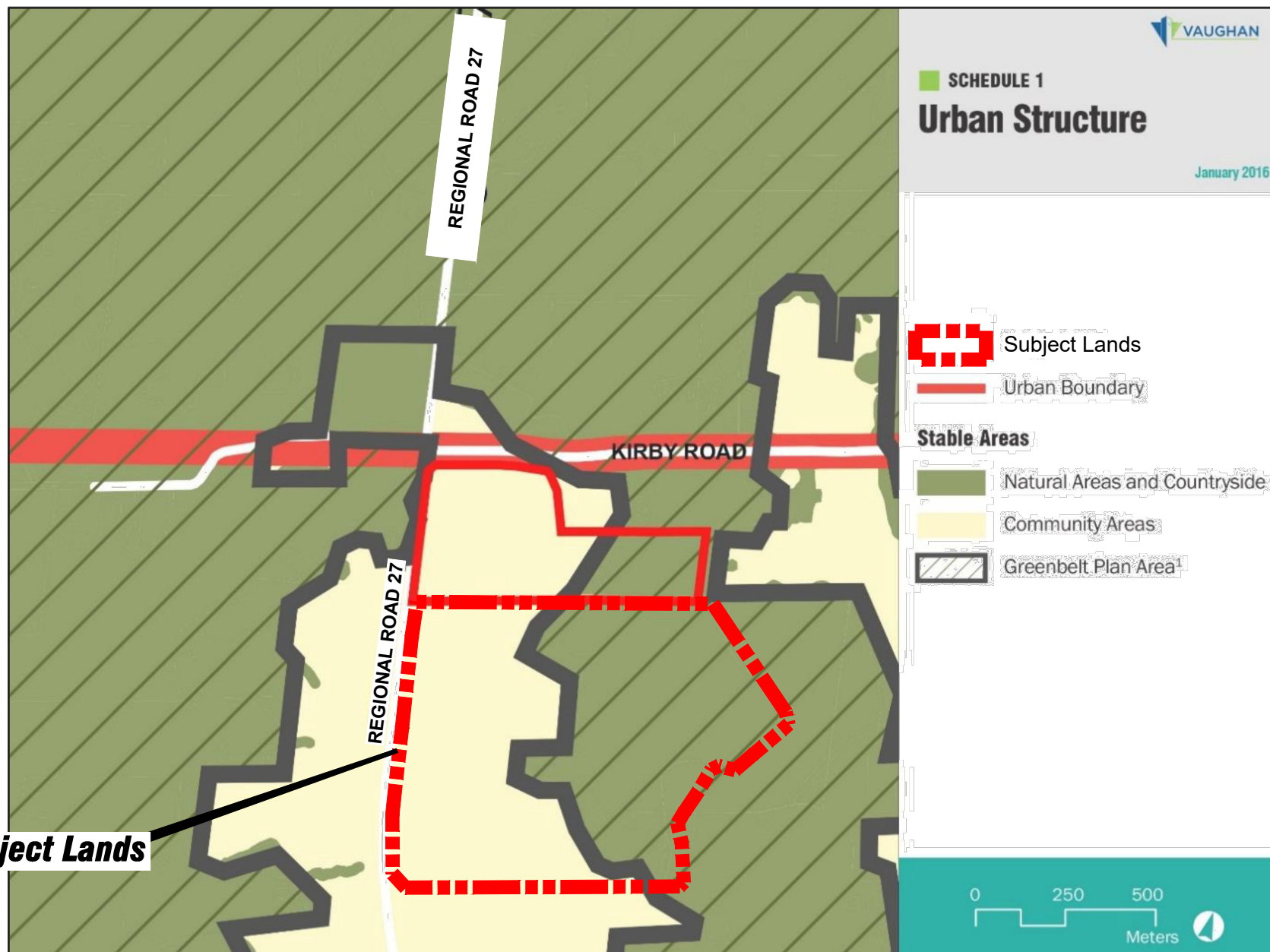


Attachment

FILE:
OP.17.008

DATE:
February 5, 2019

4



VOP 2010 Schedule 1 - Urban Structure

APPLICANT: East Kleinburg Developments
Inc. / 1045501 Ontario Limited

LOCATION: Part of Lots
28 & 29, Concession 8

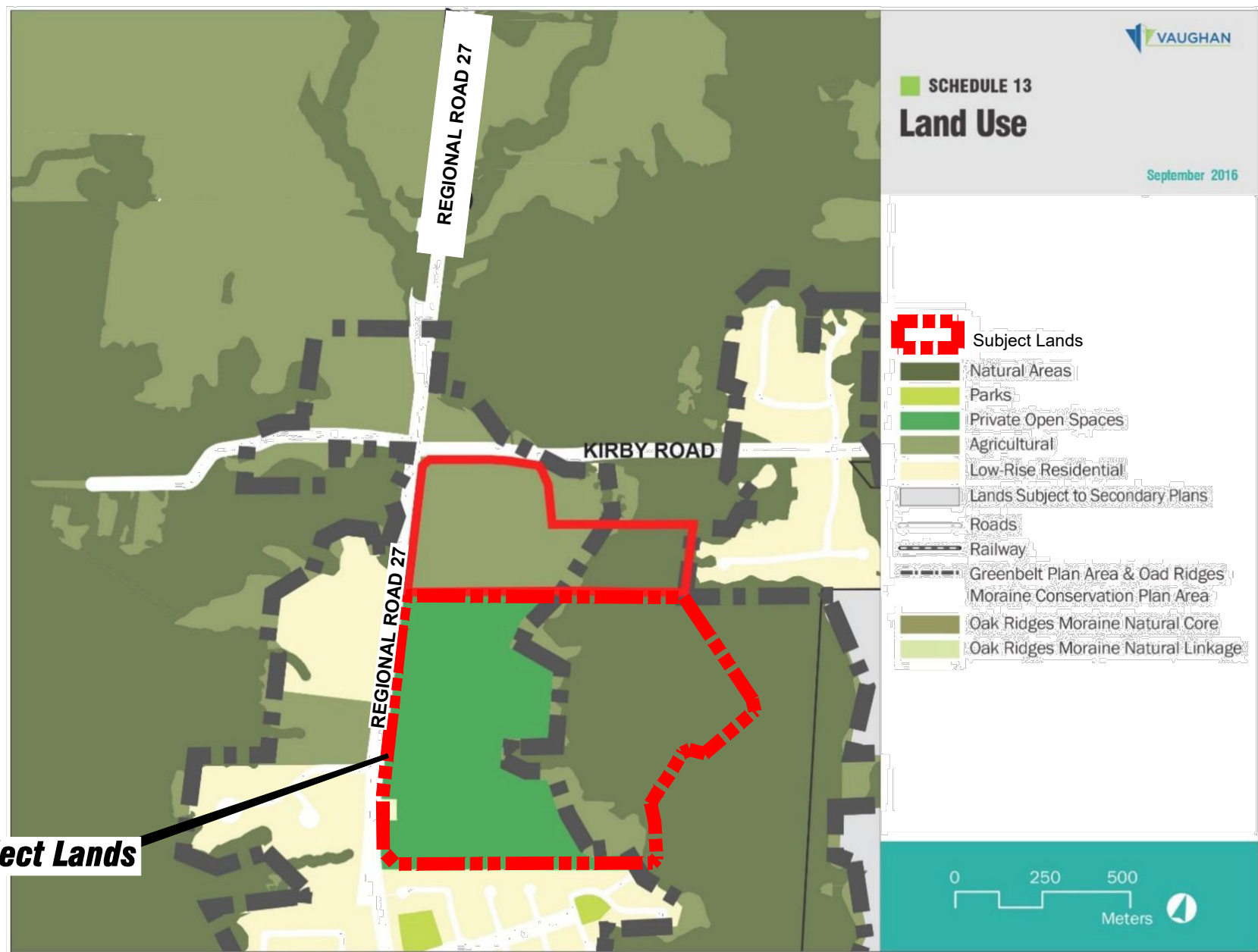


Attachment

FILE:
OP.17.008

DATE:
February 6, 2019

5



VOP 2010 Schedule 13 - Land Use

APPLICANT: East Kleinburg Developments
Inc. / 1045501 Ontario Limited

LOCATION: Part of Lots
28 & 29, Concession 8



Attachment

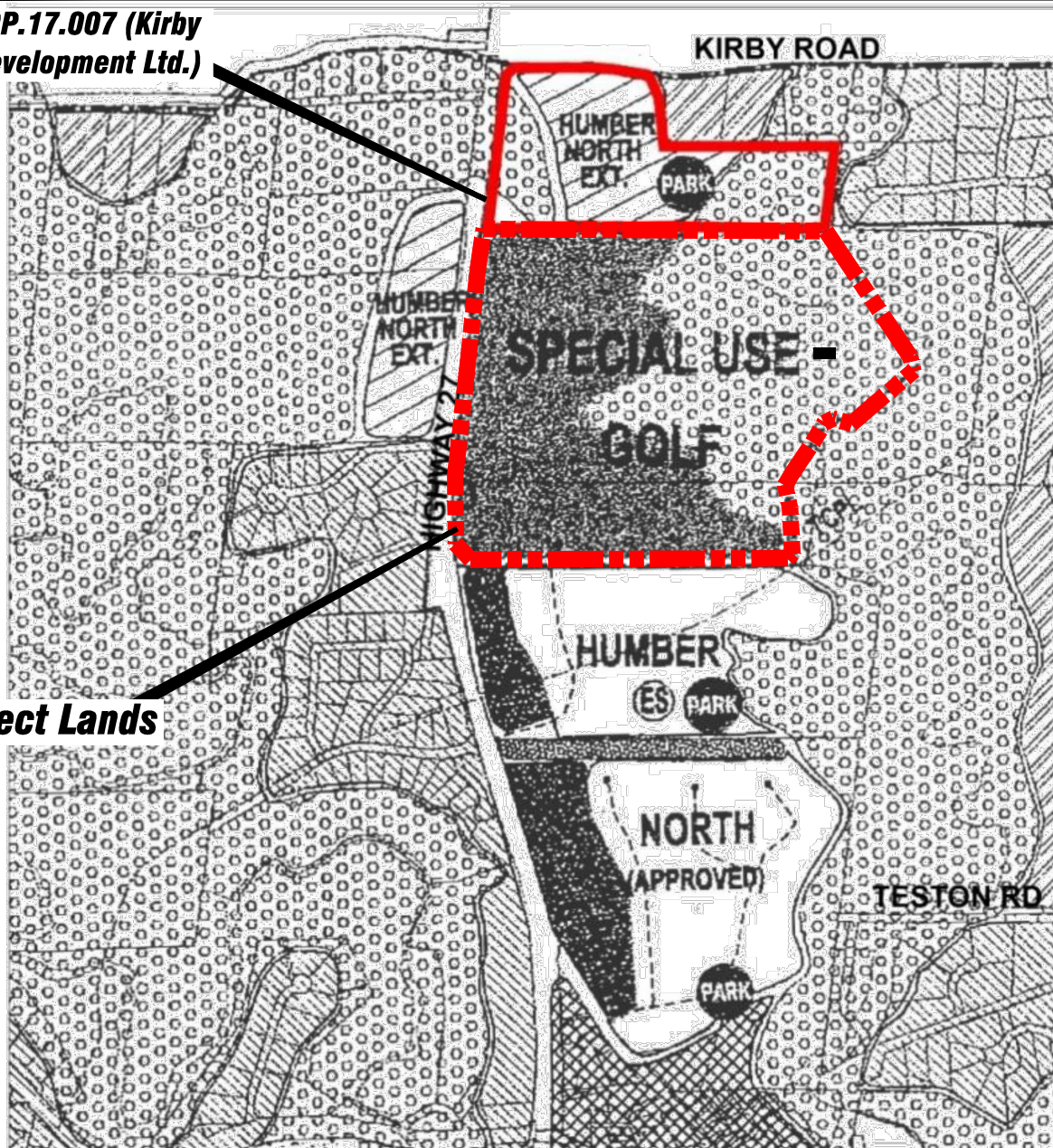
FILE:
OP.17.008

DATE:
February 5, 2019

6

**File OP.17.007 (Kirby
27 Development Ltd.)**

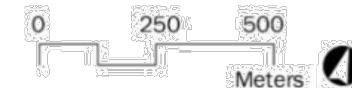
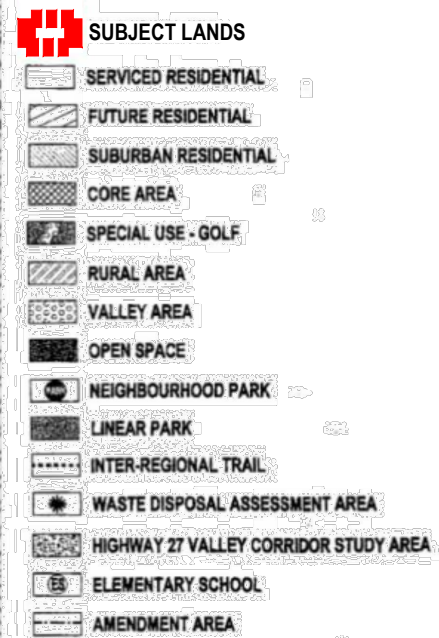
Subject Lands



KLEINBURG NASHVILLE COMMUNITY PLAN

SCHEDULE 'A' LAND USE

THIS IS SCHEDULE 'A'
TO AMENDMENT NO. 601



OPA 601 (Kleinburg - Nashville Community Plan) - Schedule 'A' Land Use

APPLICANT: East Kleinburg Developments
Inc. / 1045501 Ontario Limited

LOCATION: Part of Lots
28 & 29, Concession 8

N:\GIS_Archive\Attachments\OP\op.17.008.dwg



Attachment

FILE:
OP.17.008

DATE:
February 5, 2019

7