



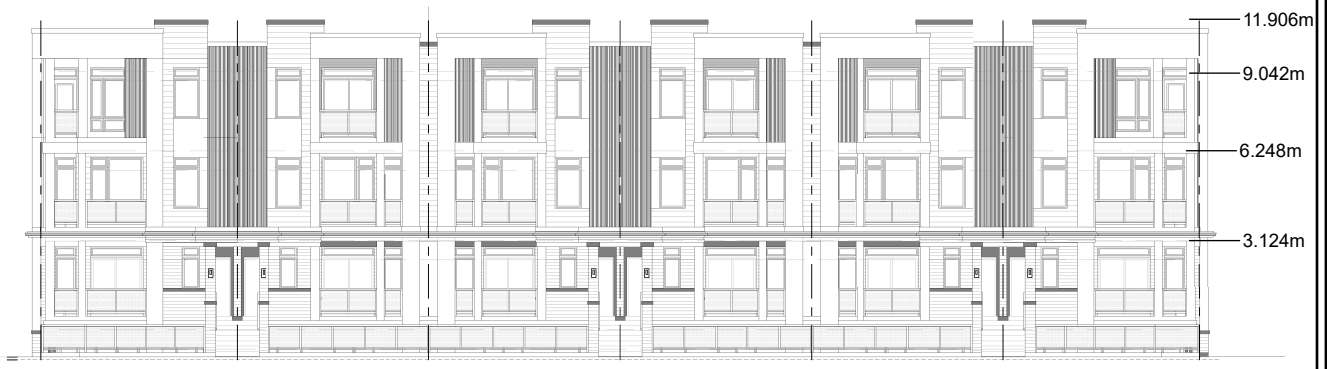
**RIGHT ELEVATION
3 STOREYS**



**REAR ELEVATION
3 STOREYS**



**LEFT ELEVATION
3 STOREYS**



**FRONT ELEVATION
3 STOREYS**

Not to Scale

Proposed Building Elevations

LOCATION:
3836 and 3850 Major Mackenzie Drive West
Part of Lot 21, Concession 6

APPLICANT:
NJS Developments Inc.



Attachment

FILE:
Z.25.050
RELATED FILE:
DA.22.071
DATE:
March 31, 2026

4