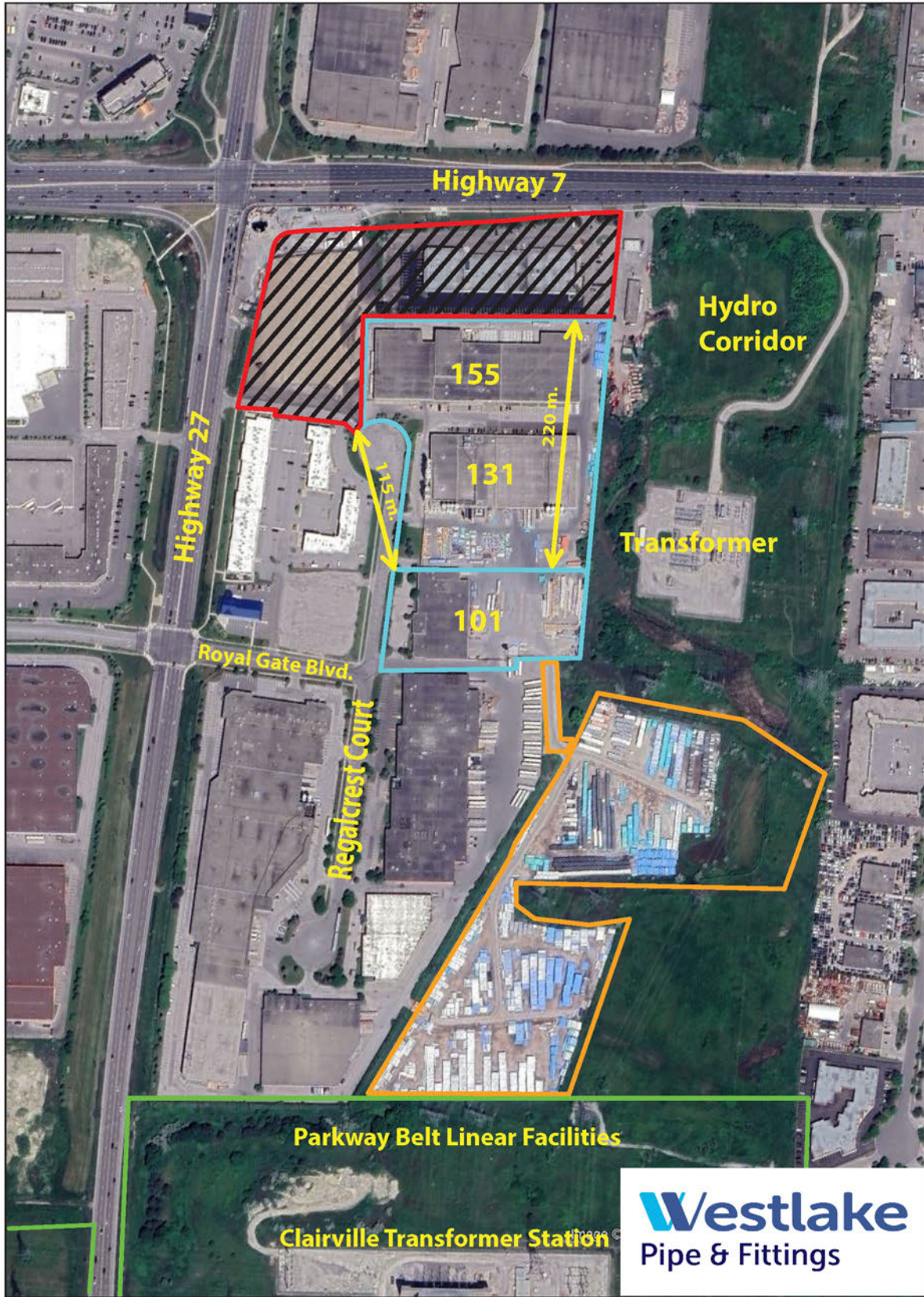


**AERIAL IMAGE 1:
 APPLICANTS PROPERTY RELATIVE TO WESTLAKE CANADA INC. O/A WESTLAKE PIPE & FITTINGS**



1711_Image1_MAR.2026

Legend







-  5875 HIGHWAY 7 AND PART BLOCK 1, 65M-3033
 PART OF LOT 5, CONCESSION 8
 Applicant: Bostar Inc. and 1639326 Ontario Ltd.
-  101, 131 & 155 REGALCREST COURT
-  NORTHERN & SOUTHERN OUTSIDE STORAGE BLOCKS (LICENCED)



**AERIAL IMAGE 2:
D-6: SENSITIVE LAND USE INFLUENCE AREA AND MINIMUM SEPARATION DISTANCE OF 70m**



Legend

-  5875 HIGHWAY 7 AND PART BLOCK 1, 65M-3033 Applicant: Bostar Inc. and 1639326 Ontario Ltd.
-  101, 131 & 155 REGALCREST COURT (WESTLAKE)
-  CLASS II MINIMUM SEPARATION DISTANCE OF 70m
-  SENSITIVE LAND USE INFLUENCE AREA 300m
-  SENSITIVE LAND USE INFLUENCE AREA 1000m
-  CLASS III MINIMUM SEPARATION DISTANCE OF 300m

NOTE: D-6: THE CLASS II OR III DISTINCTION IS TO BE DETERMINED.

POUND & STEWART
 PLANNING CONSULTANTS • CITYPLAN.COM
CITYPLAN+PORTAL®
 Helping People Shape Living, Working & Public Spaces®