

**C 2**

**Communication**

**CW(WS) – June 18, 2025**

**Item No. 1**



## **City of Vaughan**

### **Ward Boundary Review**

---

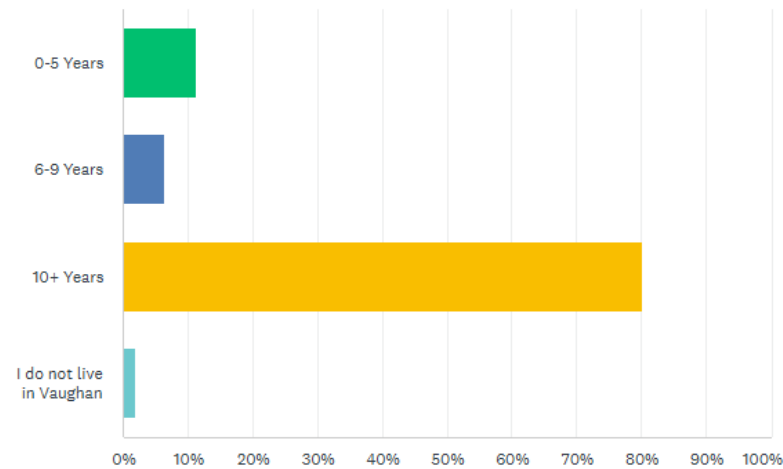
**Final Recommended Options to Council**

**June 18, 2025**

# What We Heard

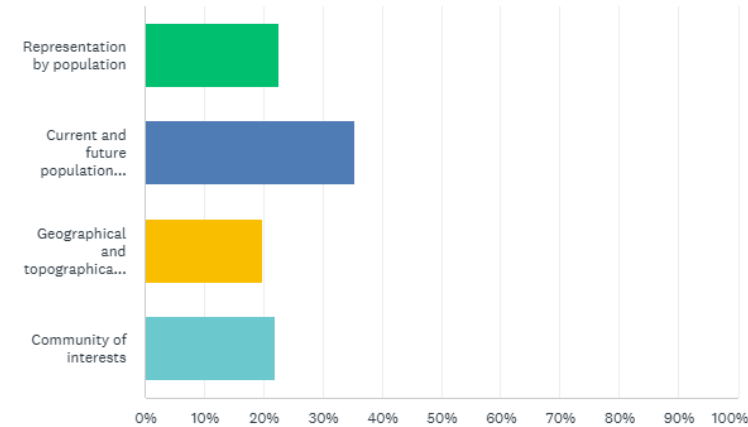
How long have you lived in Vaughan?

Answered: 395   Skipped: 0



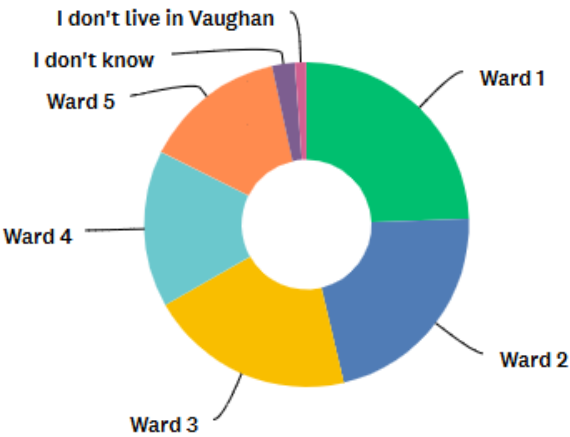
Please indicate the ONE guiding principle that should be given the highest priority to ensure effective voter representation in Vaughan:

Answered: 141   Skipped: 76



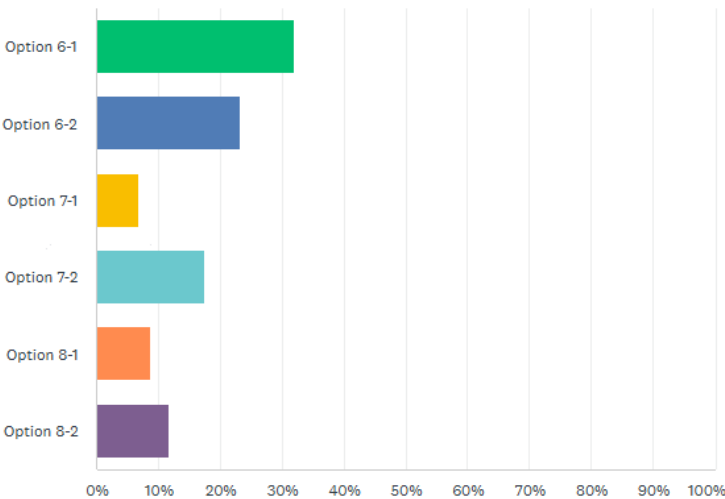
Which ward do you live in?

Answered: 352   Skipped: 43



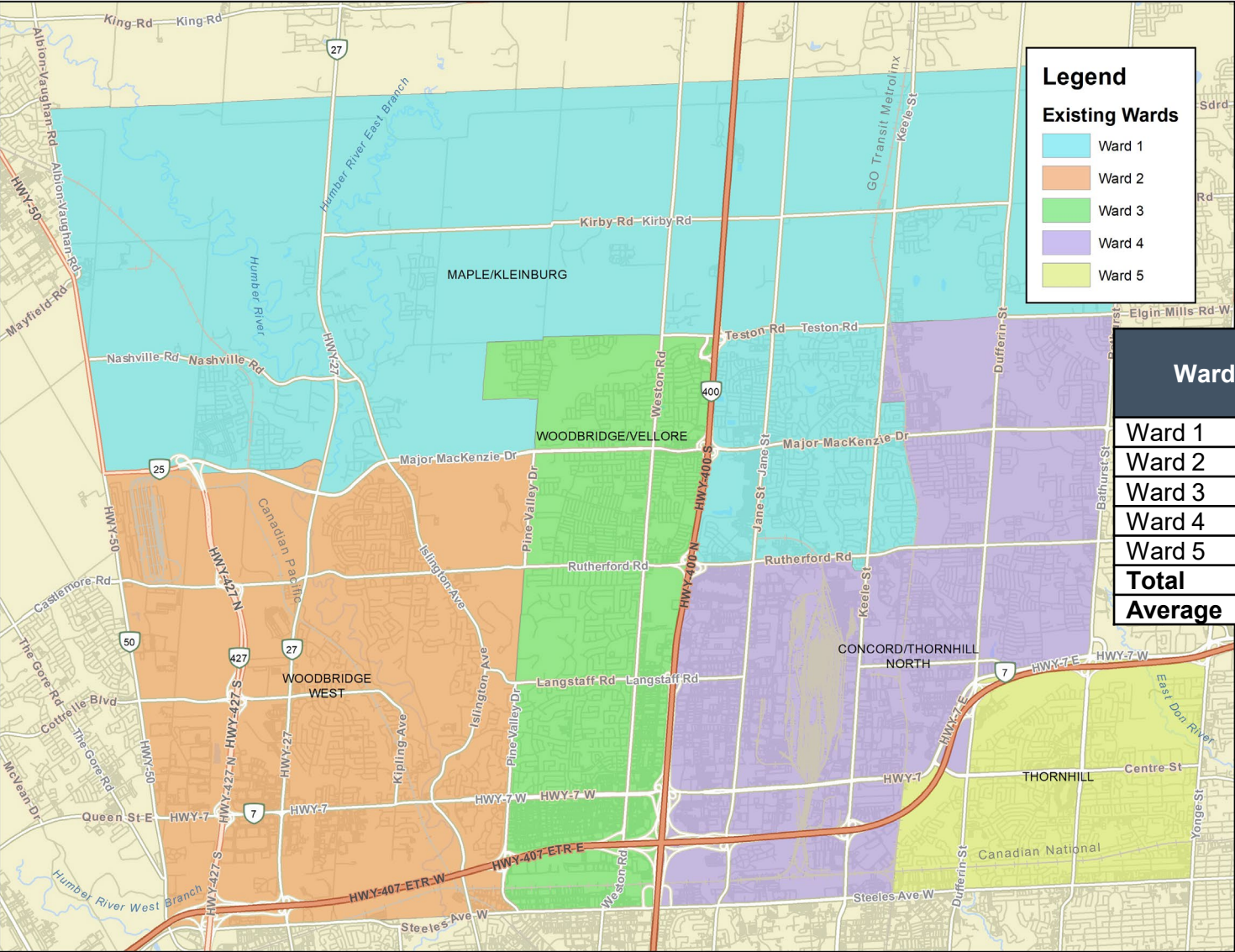
Of all of the presented options, which is most preferred?

Answered: 103   Skipped: 292





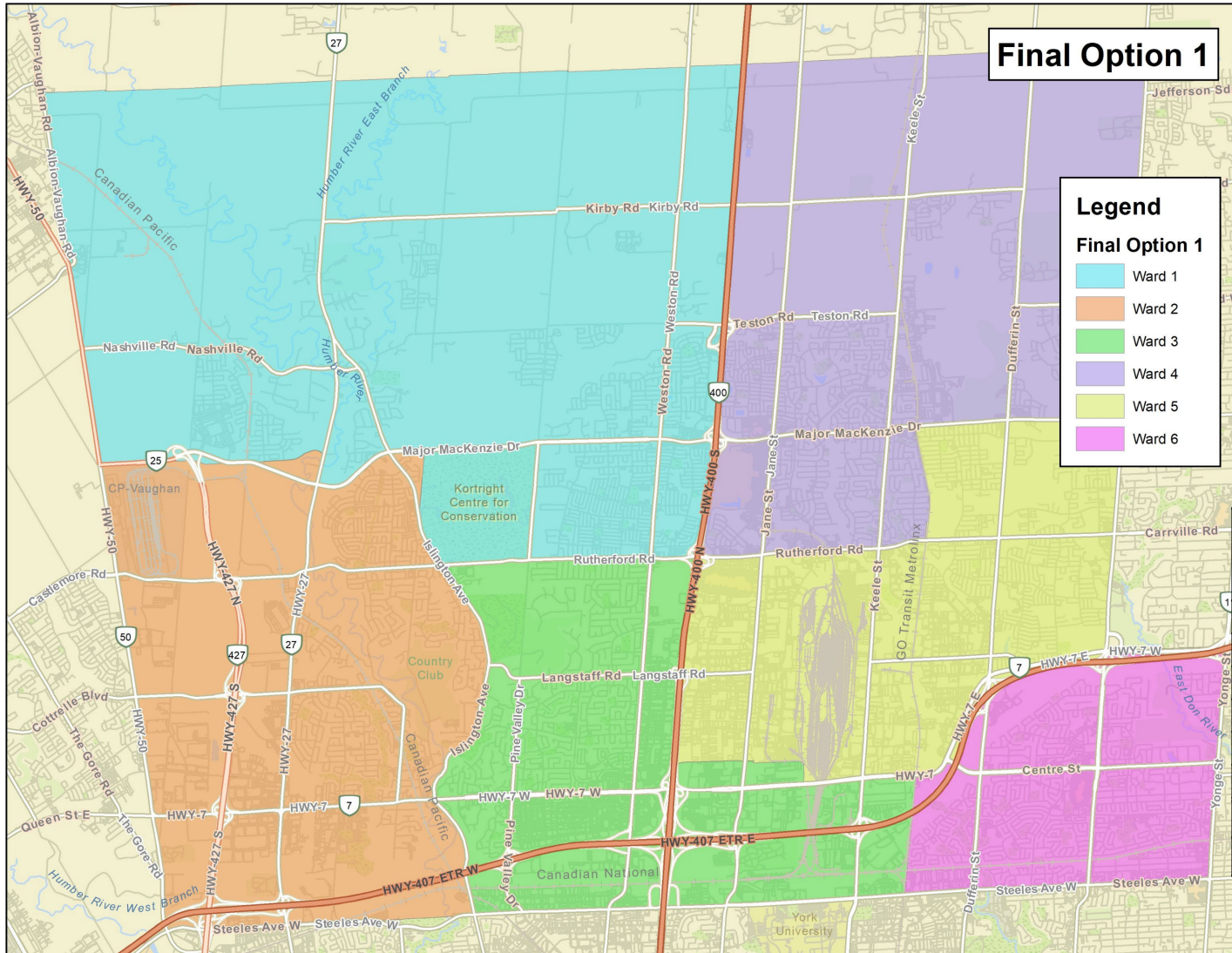
# Existing Wards



Ward	2025 Total Population	2025 Population Variance	2025 Optimal Range	2036 Total Population	2036 Population Variance	2036 Optimal Range
Ward 1	79,100	1.07	O+	114,600	1.27	OR+
Ward 2	61,000	0.82	O-	68,250	0.76	O-
Ward 3	73,750	1.00	O	79,050	0.88	O-
Ward 4	81,750	1.10	O+	106,950	1.19	O+
Ward 5	74,700	1.01	O	81,150	0.90	O-
Total	370,300	-	-	450,000	-	-
Average	74,050	-	-	90,000	-	-

# Final Option 1

## (Adjusted Preliminary Option 6-2)



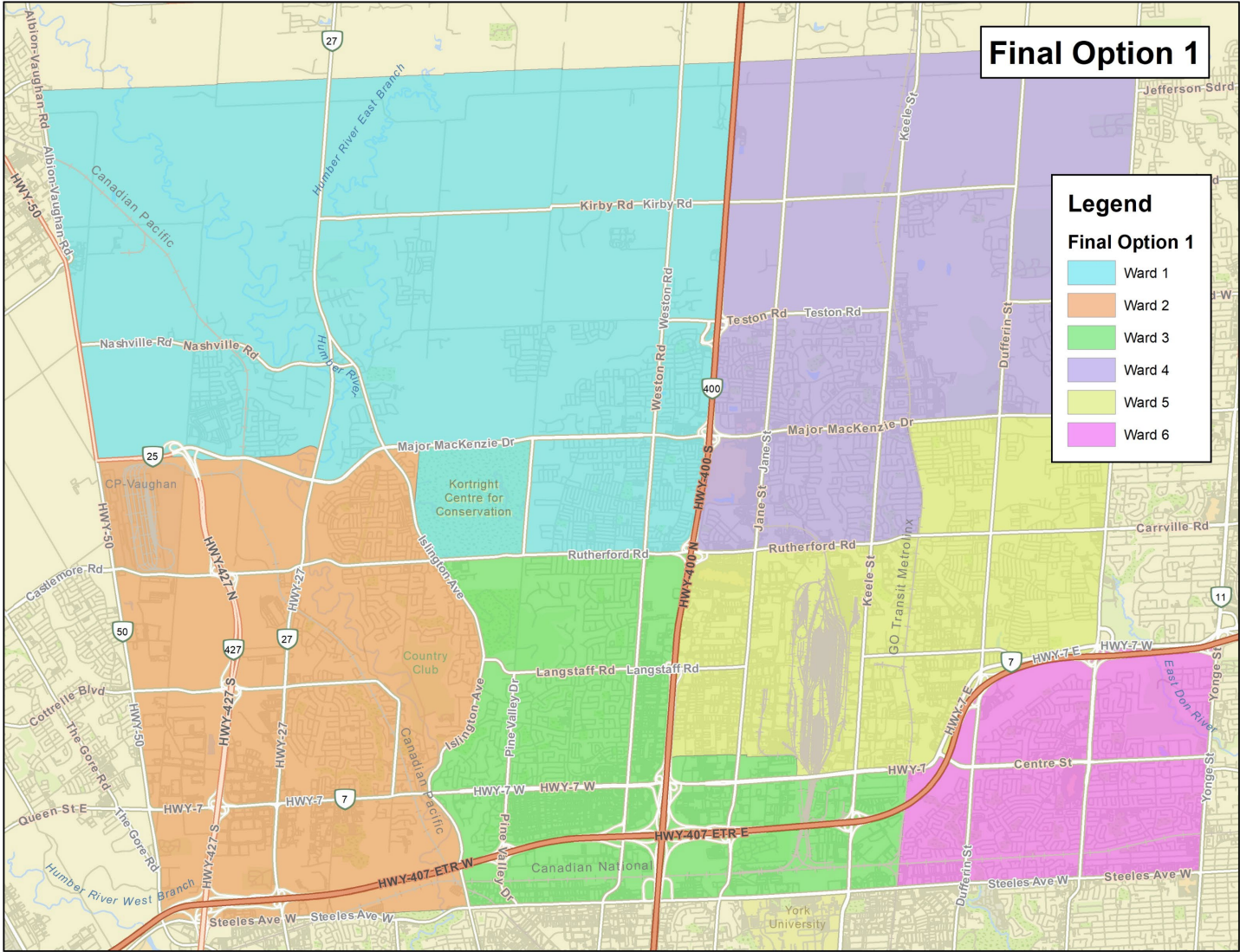
- All six wards within the acceptable population range in 2025 ( $\pm 25\%$ )
- Ward 3 grows into optimal parity and remaining Wards within of acceptable 25% population range in longer term
- Highway 400 used as a dividing line between East and West aside from Ward 3 that crosses

Ward	2025 Total Population	2025 Population Variance	2025 Optimal Range	2036 Total Population	2036 Population Variance	2036 Optimal Range
Ward 1	69,128	1.12	O+	87,723	1.17	O+
Ward 2	51,374	0.83	O-	57,828	0.77	O-
Ward 3	56,714	0.92	O-	72,065	0.96	O
Ward 4	69,286	1.12	O+	91,756	1.22	O+
Ward 5	49,118	0.80	O-	59,498	0.79	O-
Ward 6	74,694	1.21	O+	81,134	1.08	O+
<b>Total</b>	<b>370,300</b>	-	-	<b>450,000</b>	-	-
<b>Average</b>	<b>61,700</b>	-	-	<b>75,000</b>	-	-



# Final Option 1

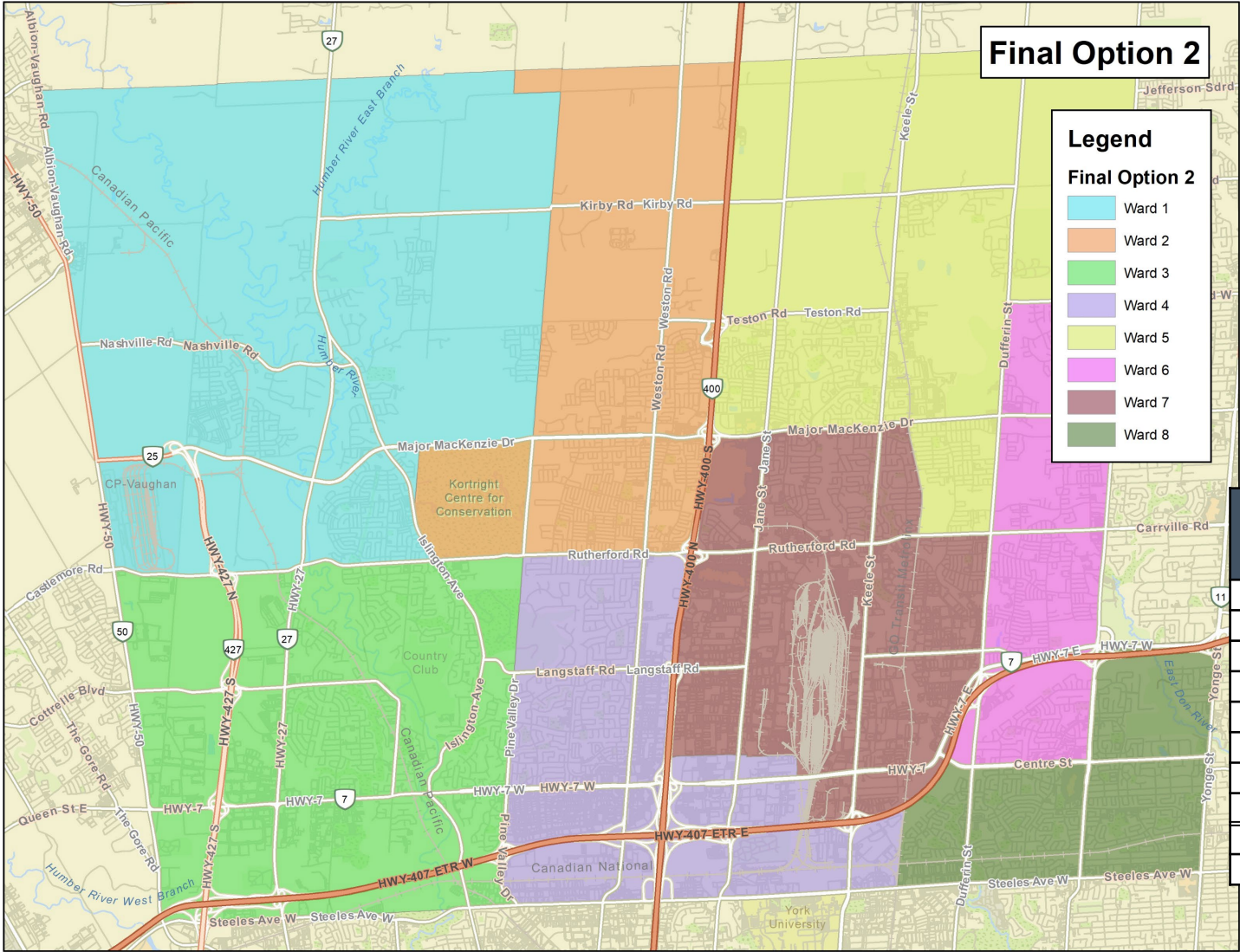
## (Adjusted Preliminary Option 6-2)



Principle	Does the Ward Structure Meet the Respective Principle?	Comment
Representation by Population	Largely Successful	All wards are within the acceptable range of variation, but with sizable disparities between certain wards. The population difference between the largest and smallest is approximately 20,000 people.
Future Population Trends	Largely Successful	All wards are within the acceptable range of variation ( $\pm 25\%$ ) but sizable disparities forecast between the largest and smallest wards: close to 34,000 people.
Communities of Interest	Yes	Most communities comfortably contained in single wards.
Geographic Representation	Yes	Most boundary lines follow identifiable markers.
Effective Representation	Largely Successful	This option provides for good population parity and comfortably contains most communities of interest and uses recognizable boundary markers but is held back from fully achieving effective representation by sizable population disparities between wards.

# Final Option 2

## (Adjusted Preliminary Option 8-2)



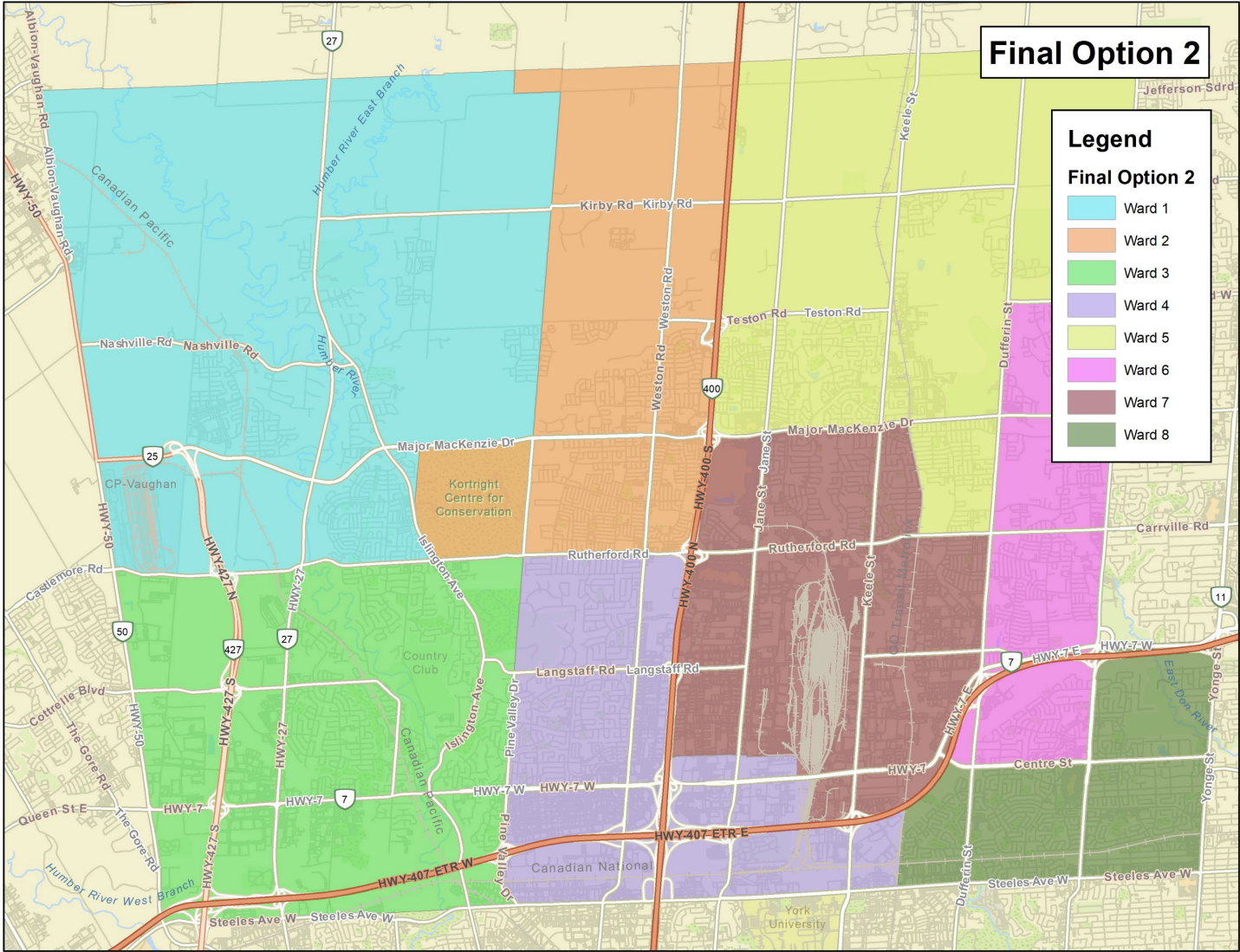
- Four of eight wards within optimal range for 2025, Ward 8 outside of the acceptable range, and remaining three wards within 25% acceptable range of variance
- Ward 6 grows into parity for 2036, Ward 7 grows outside of the acceptable range, and remaining six wards within 25% range of variance

Ward	2025 Total Population	2025 Population Variance	2025 Optimal Range	2036 Total Population	2036 Population Variance	2036 Optimal Range
Ward 1	39,575	0.85	O-	46,254	0.82	O-
Ward 2	45,340	0.98	O	59,376	1.06	O+
Ward 3	45,195	0.98	O	50,341	0.89	O-
Ward 4	46,271	1.00	O	60,363	1.07	O+
Ward 5	46,559	1.01	O	68,745	1.22	O+
Ward 6	51,743	1.12	O+	58,702	1.04	O
Ward 7	35,141	0.76	O-	39,899	0.71	OR-
Ward 8	60,490	1.31	OR+	66,323	1.18	O+
<b>Total</b>	<b>370,300</b>	-	-	<b>450,000</b>	-	-
<b>Average</b>	<b>46,300</b>	-	-	<b>56,250</b>	-	-



# Final Option 2

## (Adjusted Preliminary Option 8-2)



Principle	Does the Ward Structure Meet the Respective Principle?	Comment
Representation by Population	Largely Successful	Only one ward is outside the acceptable range of variation; four are within the optimal range.
Future Population Trends	Partially Successful	One ward is outside the acceptable range of variation; one is within the optimal range.
Communities of Interest	Yes	All wards are reasonable groupings of communities.
Geographic Representation	Yes	All wards use a recognizable configuration.
Effective Representation	Largely Successful	This option largely provides for effective representation through a combination of clear and recognizable boundary markers, protecting communities of interest and providing for reasonable population parity.

# Council's Authority & Next Steps



Ontario's *Municipal Act, 2001* is silent on essential features of the municipal system of representation. The *Act* merely authorizes a lower-tier municipality:

- to determine the “composition of council” (that is, the size of council);
- to determine how Council (other than the Mayor) will be elected (“by general vote or wards\* or by any combination of general vote and wards”) [s. 217];
- to divide or re-divide the municipality into wards or to dissolve the existing wards” through a by-law of Council [s. 222]

Council can:

- Choose one of the recommended options;
- Ask for changes or revisions to the recommended options (or choose one of the other options and ask for changes to it);
- Adopt a by-law to dissolve the wards;
- Take no action.

Should Council choose to implement new ward boundaries, it would have to pass a by-law. Notice of the by-law would have to be provided.

Any action respecting ward boundary reconfigurations (including taking no action, albeit with limitations) could be appealed to the Ontario Land Tribunal (OLT). A new by-law can be appealed up to 45 days after passage.





Questions?