

Attachment 2: Quadrant-Based Transportation Infrastructure Requirements, May 2025

The Weston 7 Secondary Plan quadrant-based implementation approach requires landowners to secure transportation infrastructure within their respective quadrants before any redevelopment can proceed. This security may include land dedication, construction, and/or funding, as approved by the City and Region. The City understands that flexibility is essential to support the development of each quadrant and will collaborate with landowners to establish a satisfactory approach for delivering the necessary transportation infrastructure. This approach is not intended to restrict development which maintains or enhances existing buildings and uses.

The tables below outline the essential transportation infrastructure elements identified by the Weston 7 Transportation Master Plan (May 2025) that must be secured for each quadrant, along with the party which will be initially responsible for leading the delivery process. More information can be found in the Weston 7 Transportation Master Plan. It is expected that, as the Weston 7 area redevelops, other parties may take responsibility during the planning, design and/or construction phases. Finalizing the party(ies) responsible for each phase of each project will be determined through the quadrant-based approvals process, namely, the supporting technical and planning studies, as required by the Weston 7 Secondary Plan and Transportation Master Plan.

Please note that this implementation approach does not preclude the provision of site-specific transportation infrastructure requirements, which will be assessed through the appropriate planning approvals process.

Notes:

\*Project ID for Existing Street Improvement and New Roads – sourced from Figure 41 – Weston 7 Transportation Master Plan (May 2025)

\*\*Project ID for New Active Transportation – sourced from Figure 42 – Weston 7 Transportation Master Plan (May 2025)

Figure 1: Property Numbers by Quadrant – Property numbers have been grouped based on ownership information compiled by staff using available data. Please note that Figure 1 is for illustrative purposes only and will be updated as necessary.

**Table 1: Weston 7 – NE Quadrant Transportation Infrastructure Requirements**

Quadrant	#	Address	Existing Street Improvement	Project ID*	New Roads	Project ID*	New Active Transportation (AT)	Project ID**
NE	1	167 Chrislea Rd.	Chrislea Rd / Portage Pk <b>Developer Led</b>	ST-10, ST-11, ST-35			AT connection – <b>Developer Led</b>	AT-11.1
	2	57 Northview Blvd.; 101 Northview Blvd.; 137 Chrislea Rd.	Northview Bl - <b>Developer Led</b>	ST-12.1 ST- 16	Minor Collector Rd <b>Developer Led</b>	ST-12.2	AT connection <b>Developer Led</b>	AT-11.1, AT-11.2
			Chrislea Rd - <b>Developer Led</b>	ST-10 ST-35	Local Rd <b>Developer Led</b>	ST-14, ST-15	AT on Highway 400 Bridge <b>City Led</b>	AT-12
			Weather protection along the existing Highway 7 median Multiuse Pathway over Highway 400 <b>Region Led</b>	AT-15			Grade separated crossing of Highway 7 <b>City Led</b>	AT-19
	3	140 Northview Blvd.	Chrislea Rd - <b>Developer Led</b>	ST-10	Local Rd <b>Developer Led</b>	ST-13 ST-17	AT connection <b>Developer Led</b>	AT-10
			Northview Bl - <b>Developer Led</b>	ST-12.1 ST-16				
	4	7887 Weston Rd.	Weston Rd - <b>Region Led</b>	AT -24			AT connection <b>Developer Led</b>	AT-10
			Northview Bl - <b>Developer Led</b>	ST-12.1			Grade-Separated Crossing on Weston Rd <b>City Led</b>	AT-16
			Chrislea Rd - <b>Developer Led</b>	ST-10				
	5	3600 Hwy 7 W; 3700 Hwy 7 W; 7777 Weston Road	Weston Road – <b>Region Led</b>	AT-24	Local Road – <b>Developer Led</b>	ST-14	Grade-Separated Crossing on Weston Rd <b>City Led</b>	AT-20
			Northview Bl - <b>Developer Led</b>	ST-12.1				

**Table 2: Weston 7 – NW Quadrant Transportation Infrastructure Requirements**

Quadrant	#	Address	Existing Street Improvement	Project ID	New Roads	Project ID	New AT	Project ID
NW	6	3764 Hwy 7 W	Weston Rd - <b>Region Led</b>	AT -24			Grade-Separated Crossings of Highway 7 <b>City Led</b>	AT-20
	7	3790 Hwy 7 W	Weston Rd - <b>Region Led</b>	AT -24	Local Road (boundary between #7 & #10) <b>Developer Led</b>	ST-6	AT connection <b>Developer Led</b>	AT-9
							AT connection <b>Developer Led</b>	AT-18
	8 and 9	110, 130, 150, 180 and 200 Windflower Gate	New traffic signal - <b>City Led</b>	SG-2 SG-6	Local Road (including Special Traffic Infiltration Study) <b>City Led</b>	ST-5	AT link on Matthew Drive to New Local Road – <b>Developer Led</b>	AT- 1
			Fieldstone Dr - <b>City Led</b>	ST-1.2	Local Road <b>Developer Led</b>	ST-4.1, ST-4.2, ST-4.3, ST-6, ST-8	AT connection <b>Developer Led</b>	AT-7
			Fieldstone Dr - <b>City Led</b>	ST-1.1			Grade-Separated Crossing of Weston Road - <b>City Led</b>	AT-16
			Windflower Gt – <b>Developer Led</b>	ST-2.1			AT Multi-use Pathway along Fieldstone extension connecting to Giovanni Caboto Park – <b>Developer Led</b>	AT-2.1, AT-2.2
			Windflower Gt – <b>Developer Led</b>	ST-2.2			At Connection – <b>Developer Led</b>	AT-9
			Windflower Gt - <b>Developer Led</b>	ST-2.3				
			Weston Road – <b>Region Led</b>	AT-24				
	10	3850 Hwy 7 W	Nova Star Dr (boundary between #10 & #11)	ST-7	Local Road <b>Developer Led</b>	ST-3.2	AT connection <b>Developer Led</b>	AT-6

Attachment 2: Quadrant-Based Transportation Infrastructure Requirements, May 2025

			Highway 7 to Windflower Gt - <b>Developer Led</b>					
			Windflower Gt - <b>Developer Led</b>	ST-2.2	Local Road (boundary between #7 & #10) <b>Developer Led</b>	ST-6	AT connection <b>Developer Led</b>	AT-18
			New traffic signal - <b>City Led</b>	SG-2				
	11	3900 Hwy 7 W	Nova Star Dr (boundary) from Highway 7 to Windflower Gt - <b>Developer Led</b>	ST-7	Local Road - <b>Developer Led</b>	ST-3.1, ST-3.2, ST-4.1, ST-4.2, ST-4.3	AT connection <b>Developer Led</b>	AT-5
			Windflower Gt - <b>Developer Led</b>	ST-2.1			Grade-Separated Crossings of Highway 7 <b>City Led</b>	AT-17
	12	3940 Hwy 7 W	Ansley Grove Rd from Highway 7 to Windflower Gate - <b>Developer Led</b>	ST-9	Local Road - <b>Developer Led</b>	ST-3.1, ST-3.2, ST-4.1, ST-4.2, ST-4.3	AT Multi-use Pathway extending east - west along Fieldstone extension connecting to Blue Willow and linking to Giovanni Caboto Park <b>City Led</b>	AT-2.2,
			Windflower Gt - <b>Developer Led</b>	ST-2.1			AT connection <b>Developer Led</b>	AT-3
							Grade-Separated Crossings of Highway 7 <b>City Led</b>	AT-17

**Table 3: Weston 7 – SW Quadrant Transportation Infrastructure Requirements**

Quadrant	#	Address	Existing Street Improvement	Project ID	New Roads	Project ID	New AT	Project ID
SW	13	177 Whitmore Rd.	Whitmore Rd - <b>Developer Led</b>	ST-18				
			Winges Road - <b>Developer Led</b>	ST-24.1				
	14 and 16	3901, 3883 Hwy 7 W.; 40, 60, 90, 120, 136, 180 Winges Rd.;	Nova Star Dr - <b>Developer Led</b>	ST-19	Local Road - <b>Developer Led</b>	ST-25, ST-21	AT connection <b>Developer Led</b>	AT-4 AT-8
			Weston Road – <b>Region Led</b>	AT-24				
			Winges Road – <b>Developer Led</b>	ST-24.1			AT connection <b>Developer Led</b>	AT-21
			New traffic signal - <b>City Led</b>	SG-1				
			Windflower Gt- <b>Developer Led</b>	ST-24.2				
	15	7600 Weston Road			Local Road – <b>Developer Led</b>	ST-20, ST-21	Grade separated crossing on Weston Rd <b>City Led</b>	AT-23
			New traffic signal – <b>City Led</b>	SG-1				
			Weston Road – <b>Region Led</b>	AT-24				
			Windflower Gt – <b>Developer Led</b>	ST-24.2			Grade-Separated Crossings of Highway 7 <b>City Led</b>	AT-18
		7520, 7540, 7560 Weston Rd.						
			Weston Rd <b>Region Led</b>	AT -24			AT connection <b>Developer Led</b>	AT-21
			Rowntree Dairy Rd <b>Developer Led</b>	ST-23				
			Windflower Gt <b>Developer Led</b>	ST-24.2				

**Table 4: Weston 7 – SE Quadrant Transportation Infrastructure Requirements**

Attachment 2: Quadrant-Based Transportation Infrastructure Requirements, May 2025

Quadrant	#	Address	Existing Street Improvement	Project ID	New Roads	Project ID	New AT	Project ID
SE	18	3733 Hwy 7 W	Weston Rd - <b>Region Led</b>	AT-24			Grade-Separated Crossings of Highway 7 <b>City Led</b>	AT-20
			Weston Rd – Region Led	AT-24				
	19	7621, 7601, 7575, 7501 Weston Rd.; 10, 11, 20, 21, 30, 31, 40, 41, 55, 67 Colossus Dr. ; 16, 21, 30, 31 Famous Ave.; 3555 Hwy 7 W	New traffic Signal <b>City Led</b>	SG-1, SG-3, SG-4, SG-5	Loop 1 (Local Road) <b>Developer Led</b>	ST-22, ST-27, ST-28, ST-29.1, ST-29.2, ST-30		
			Weather protection along the existing Highway 7 median Multiuse Pathway over Highway 400 – <b>Region Led</b>	AT-15	Local Road – <b>Developer Led</b>	ST-26	AT Connection – <b>Developer Led</b>	AT-13, AT-14
			Famous Avenue – <b>Developer Led</b>	ST-26	Local Road – <b>Developer Led</b>	ST-28	Grade separated crossing on Weston Rd <b>City Led</b>	AT-23
			Colossus Drive – <b>Developer Led</b>	ST-34	Major Collector – <b>Developer Led</b>	ST-31, ST-33	Grade-Separated Crossings of Highway 7 <b>City Led</b>	AT-19
			Weston Road – <b>Region Led</b>	AT-24		ST-36	AT Connection – <b>Developer Led</b>	AT-14
	20	71 Colossus Dr.	Famous Avenue – <b>Developer Led</b>	SG-4	Local Road - <b>Developer Led</b>	ST-30, ST-32		
			Colossus Dr <b>Developer Led</b>	ST-34	Major Collector - <b>Developer Led</b>	ST-31		



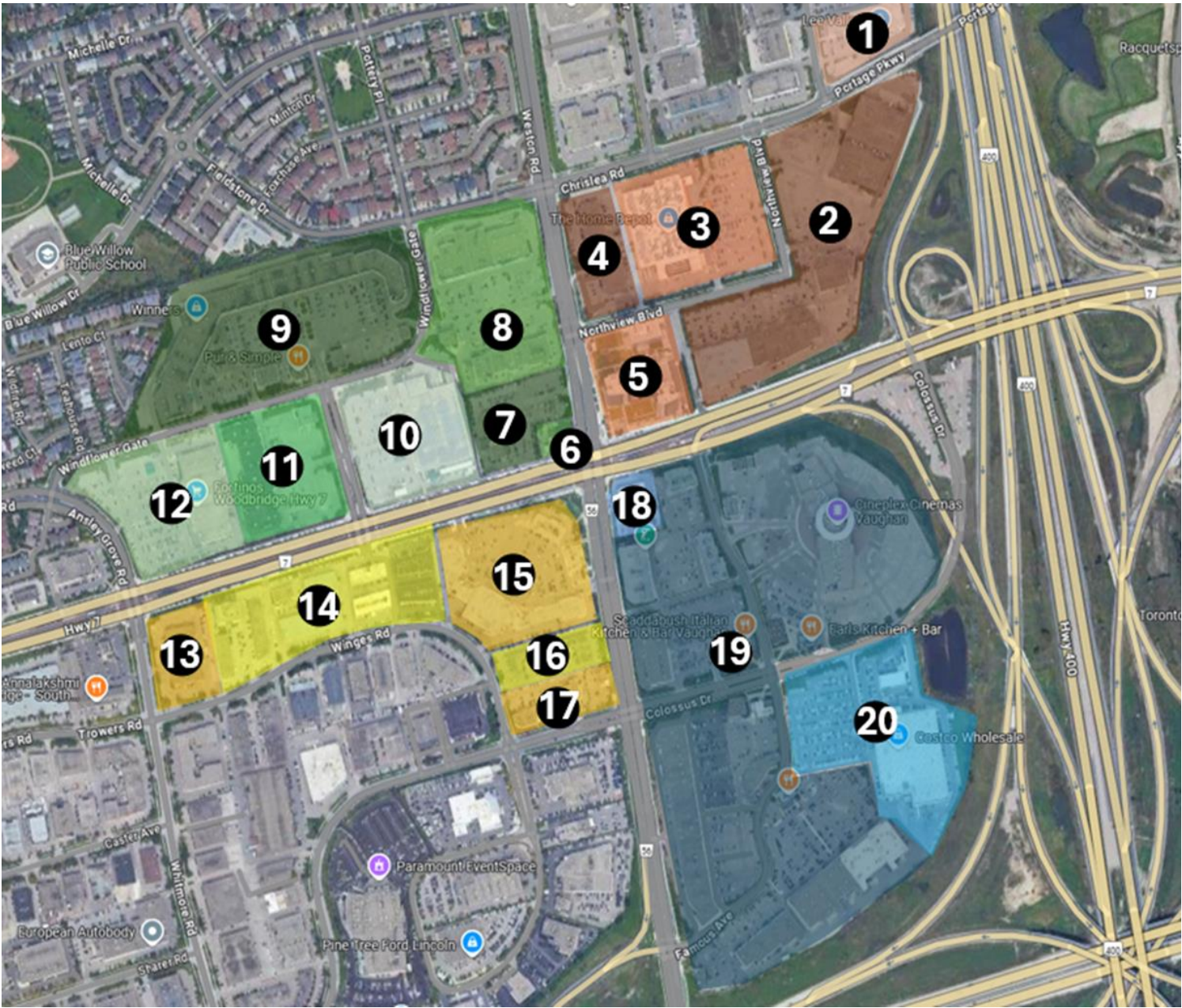


Figure 1: Property Numbers by Quadrant