



APRIL 1, 2025

COMMITTEE OF THE WHOLE

Public Meeting

171 Maplecrete Rd &
160/140 Doughton Road
City of Vaughan

C12.

Communication

CW(PM) – April 1, 2025

Item No. 1



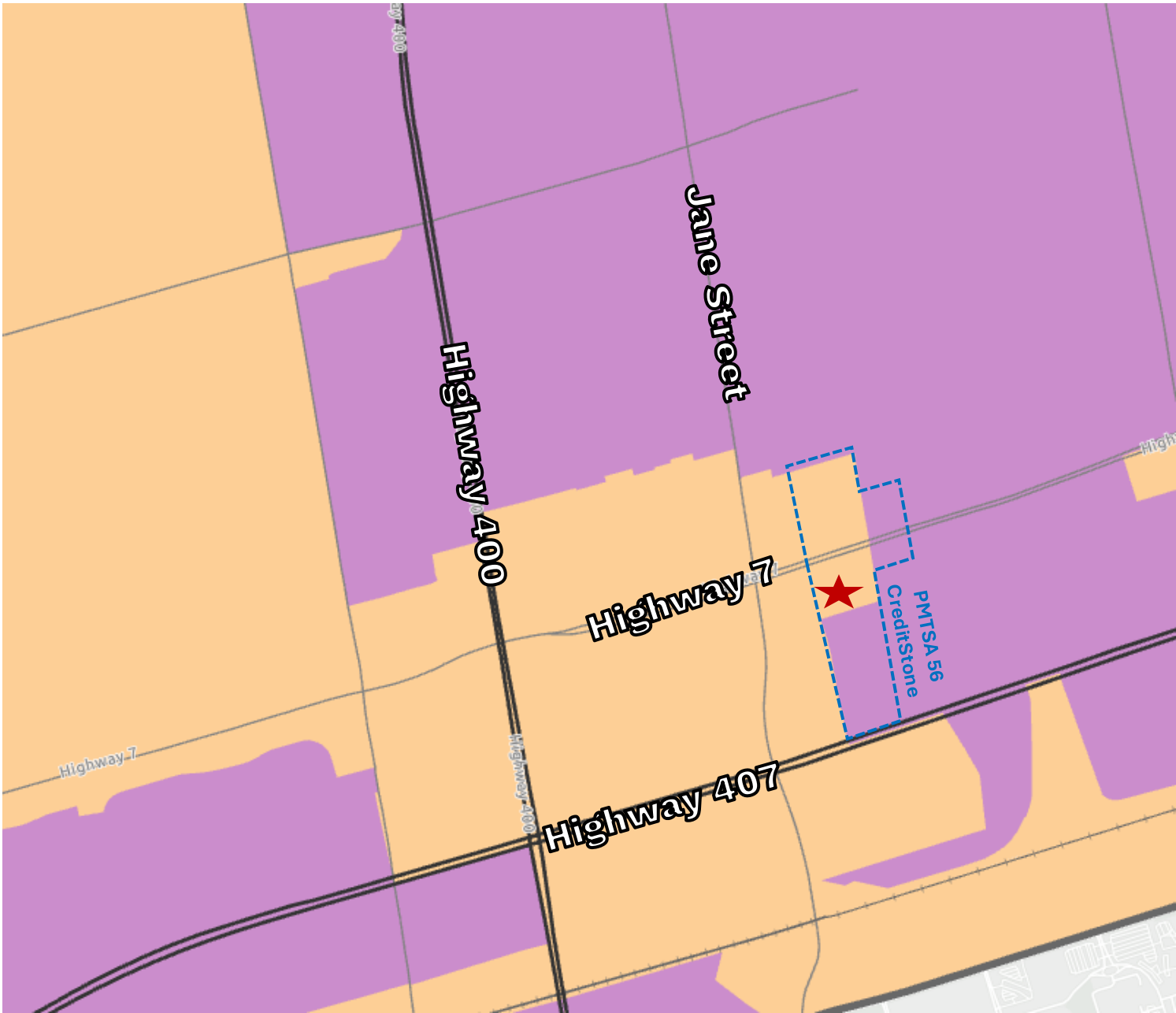
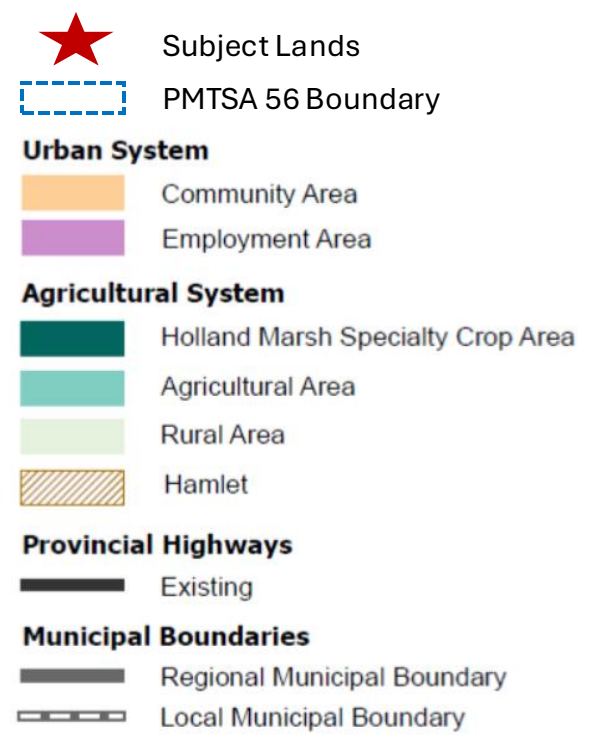
LiBerty
development

Surrounding Context Aerial



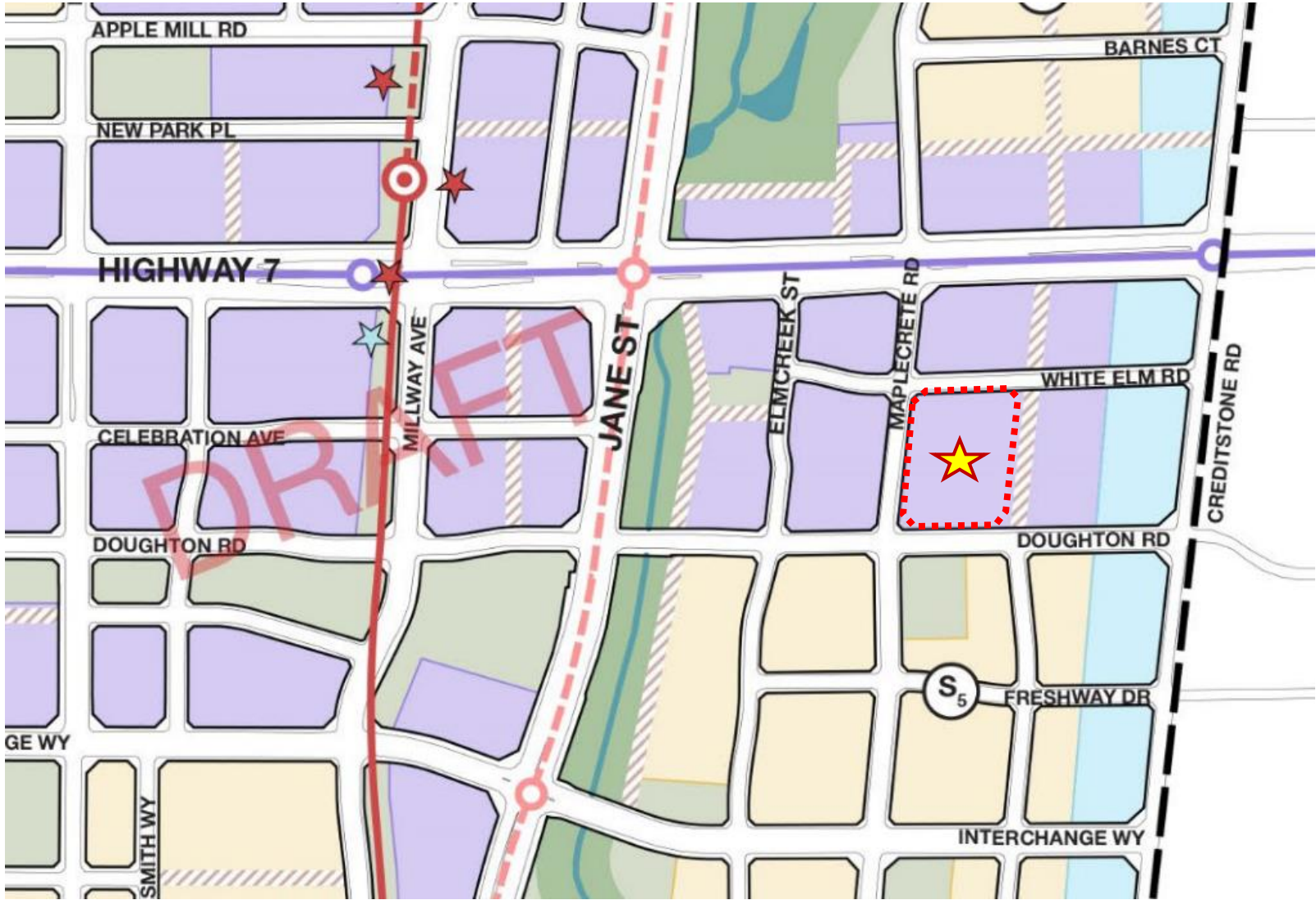
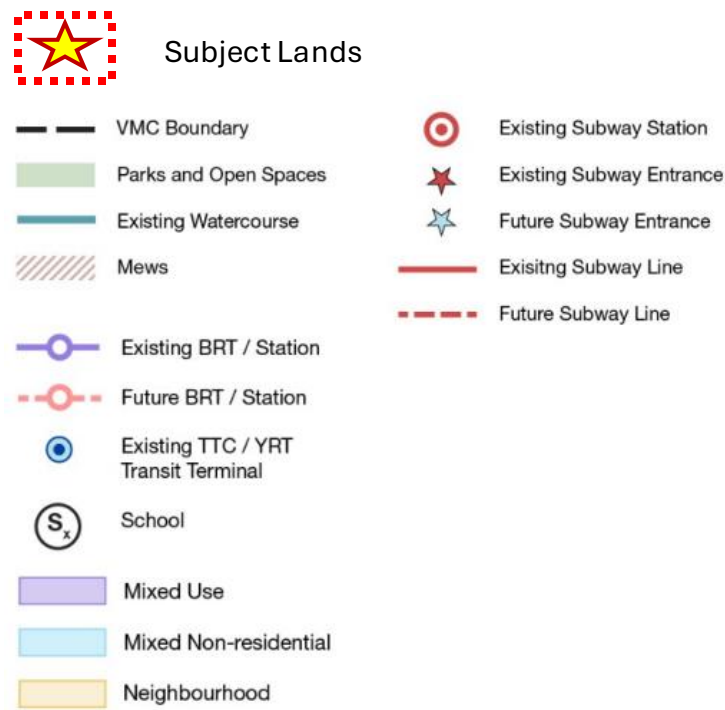
York Region Official Plan (2022)

Map 1A Land Use Designations



VMC Secondary Plan Update (DRAFT)

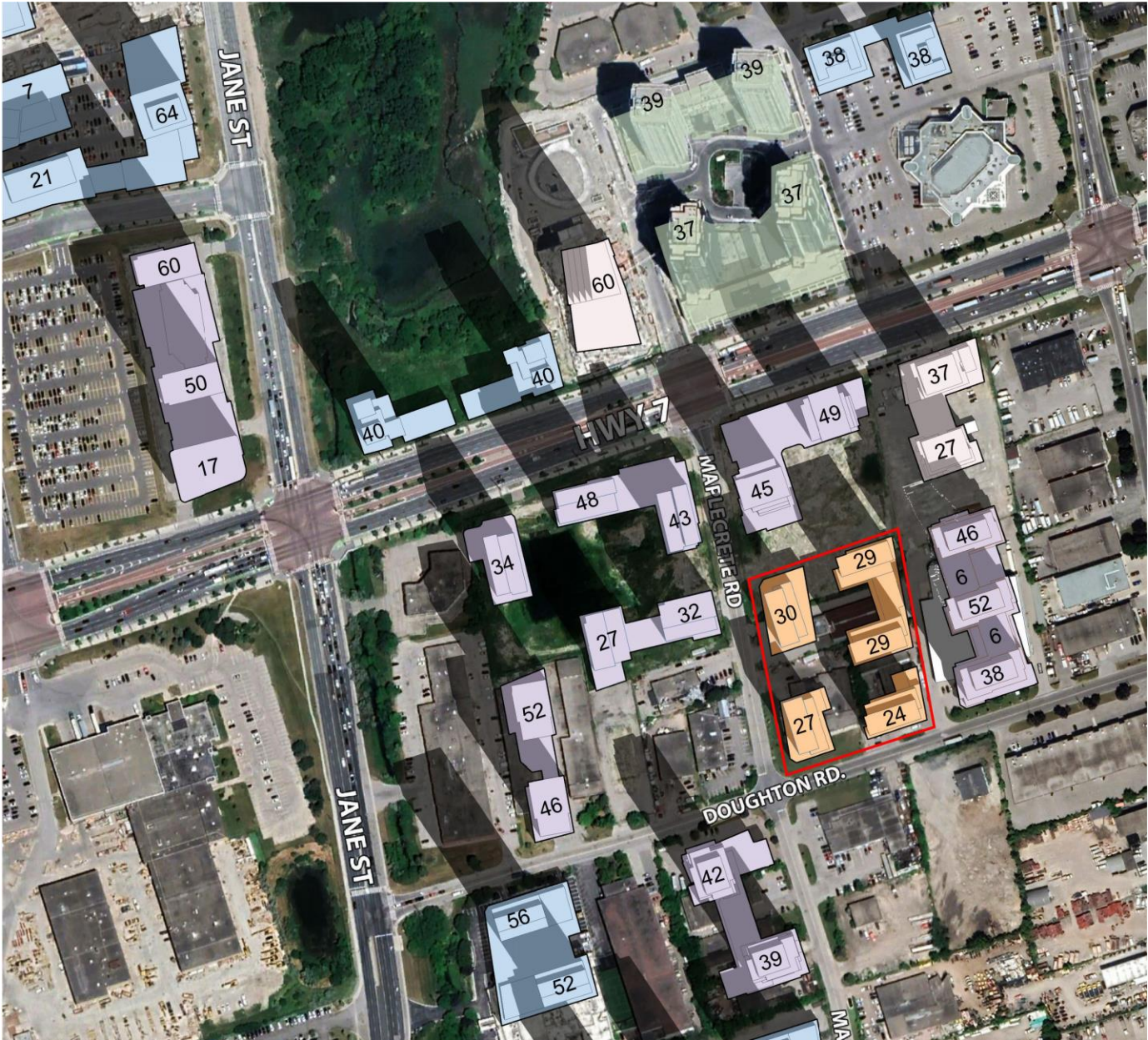
Schedule G – Land Uses



Development Context

LEGEND

- SUBJECT SITE
- PROPOSED
- APPROVED
- UNDER CONSTRUCTION
- BUILT



Proposed Development

SITE AREA:	3.48 acres
HEIGHTS:	24, 27, 29, 29, & 30-storeys
GROSS FLOOR AREA:	1,210,420 ft²
<i>Residential:</i>	943,389 ft ² (1,383 units)
<i>Res Rental Units:</i>	114,087 ft ² (182 units)
<i>Hotel:</i>	88,727 ft ² (120 suites)
<i>Office:</i>	62,861 ft ²
<i>Commercial:</i>	1,356 ft ²
FSI:	8.0
AMENITIES:	67,480 ft ² (Indoor/Outdoor)



Mixed-use Development

The development provides a mix of uses including:

- Purpose-built Rental
- Hotel
- Office
- Retail



LANDSCAPE MASTERPLAN



PERSPECTIVE



LOOKING SOUTHEAST FROM WHITE ELM RD. AND MAPLECRETE RD.



Thank You



LIBERTY
development