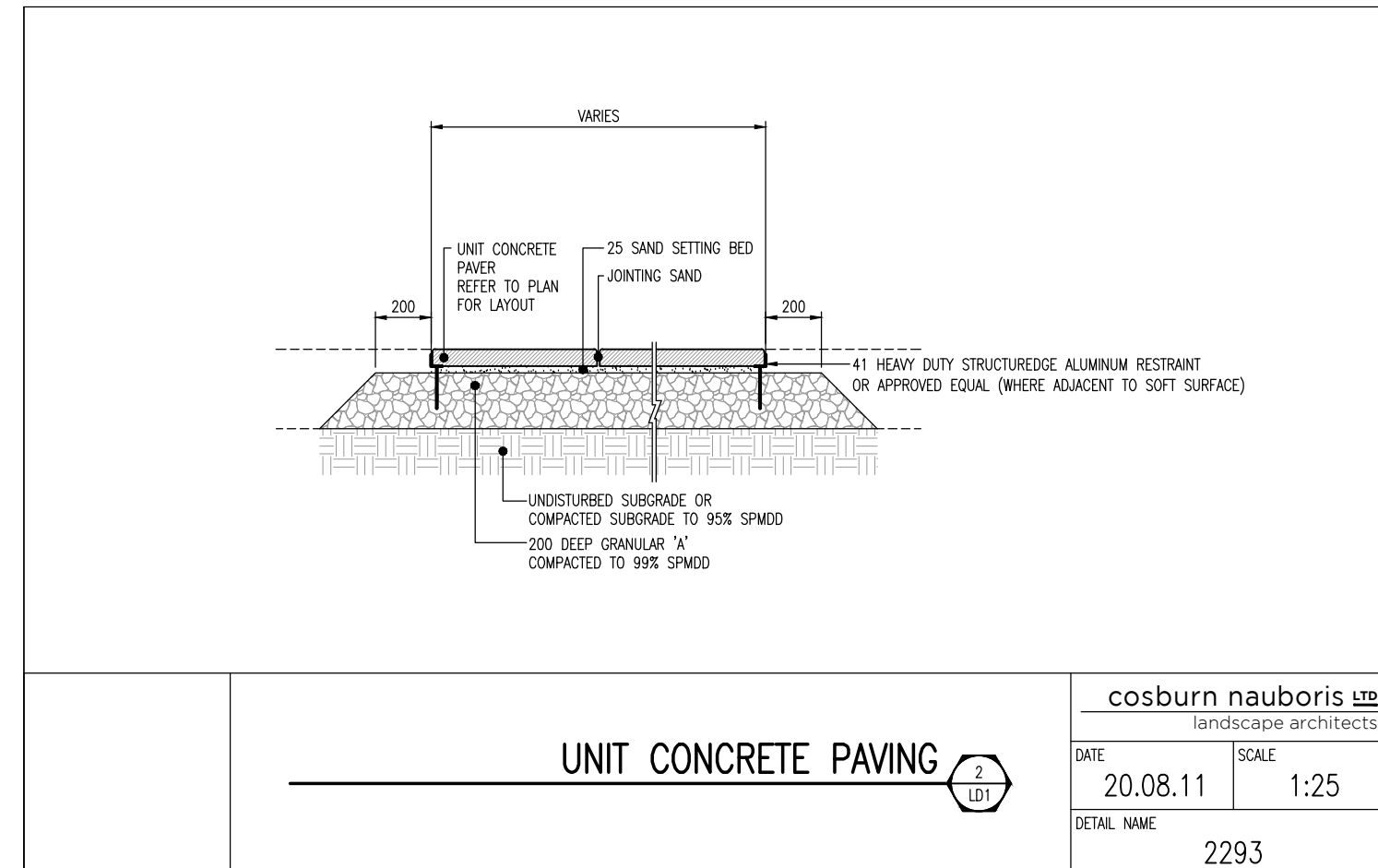


ELEVATION

1. ALL MATERIAL COMPONENTS AND WORKMANSHIP TO CONFORM TO LOCAL BY-LAWS.
2. ALL FINISHING TO BE BLACK IN COLOUR.
3. POSTS, RAILS & PICKETS - EXTRUDED MARINE ALUMINUM CHROMATE CONVERSION COATING ELECTROSTATICALLY APPLIED THERMALLY BLENDED POLYESTER POWDER COATING MINIMUM FILM THICKNESS 2.5 mm
4. FITTINGS - 12 GAUGE STAMPED MARINE ALUMINUM FACTORY FINISH AS ABOVE
5. WELDS - ALUMINUM
6. WARRANTY - 5 YEAR MAINTENANCE FREE
7. PREFERRED MANUFACTURER/SUPPLIER: IRON EAGLE INDUSTRIES 1256 CANTARY BLVD. MISSISSAUGA, ONTARIO L5S 1R1 PHONE: (905) 670-2915 FAX: (905) 670-2841 www.iron eagle.com

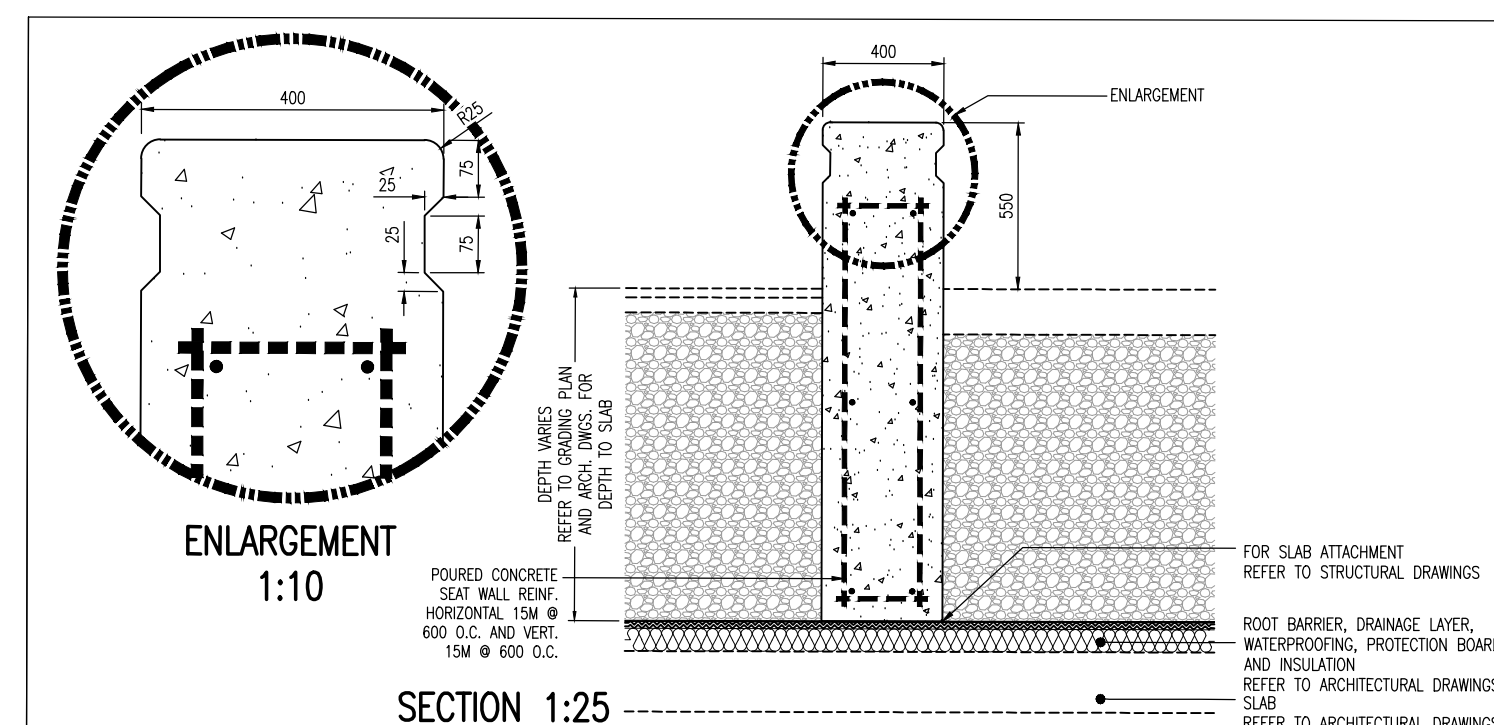
DECORATIVE METAL GUARD ON TOP OF RETAINING WALL

cosburn nauboris LTD  
landscape architects  
DATE: 24.11.01 SCALE: 1:25  
PROJECT: 2436



UNIT CONCRETE PAVING

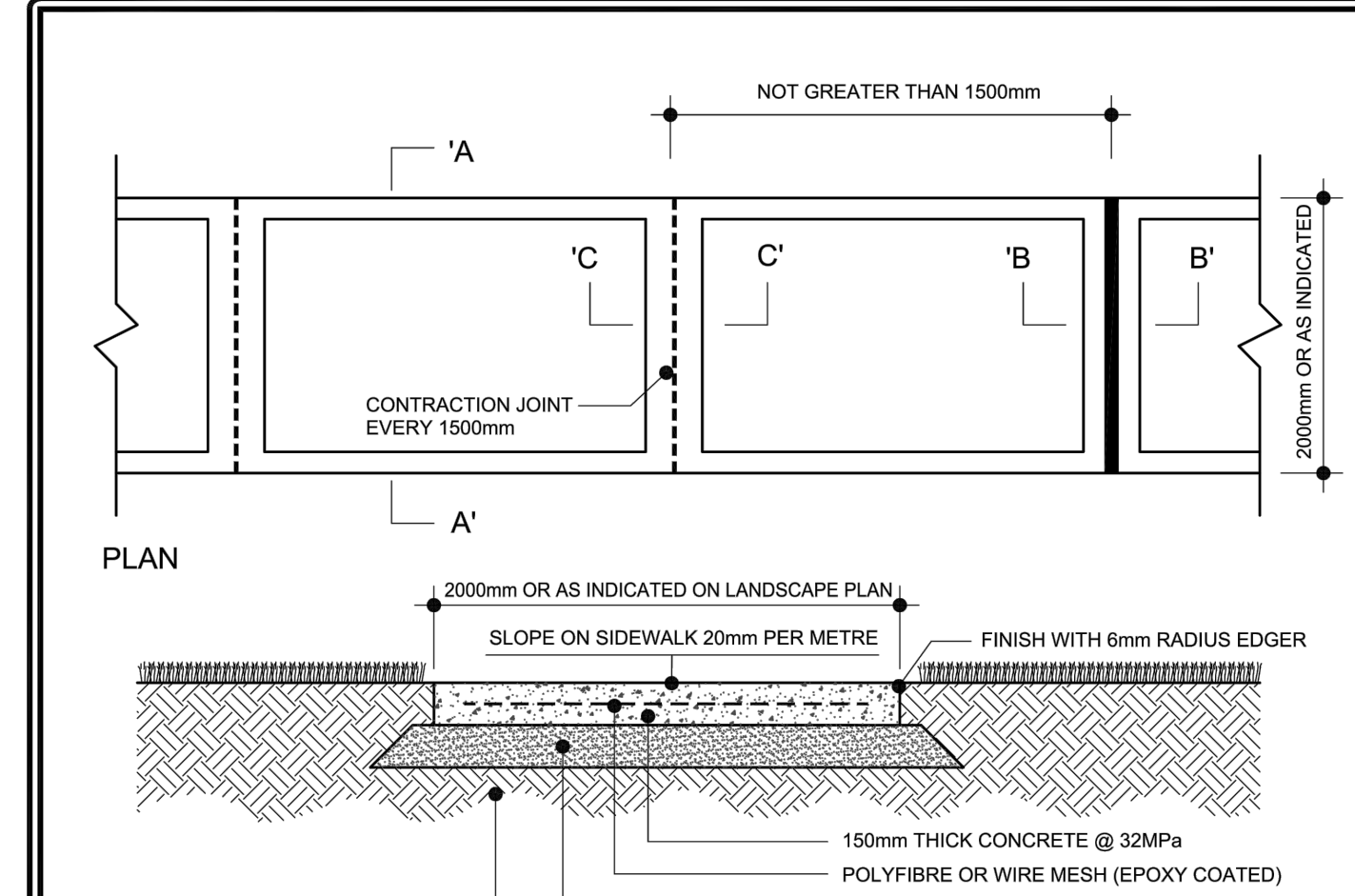
cosburn nauboris LTD  
landscape architects  
DATE: 20.08.11 SCALE: 1:25  
DETAIL NAME: 2293



ENLARGEMENT 1:10

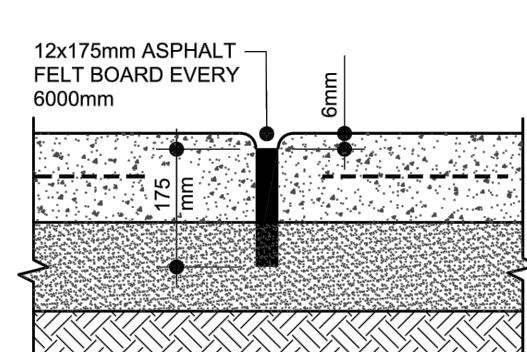
ON SLAB - FREESTANDING - POURED CONCRETE SEAT WALL

cosburn nauboris LTD  
landscape architects  
DATE: 24.12.20 SCALE: AS SHOWN  
PROJECT: 2430

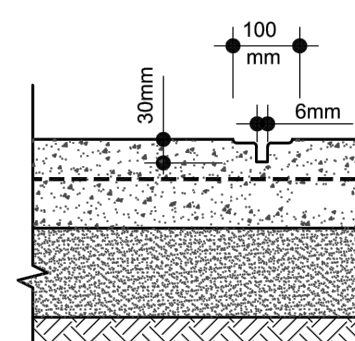


PLAN

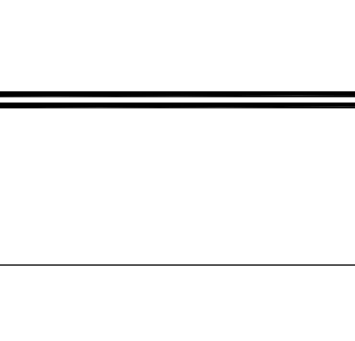
SECTION 'A-A'



SECTION 'B-B' EXPANSION JOINT DETAIL



SECTION 'C-C' CONTRACTION JOINT DETAIL

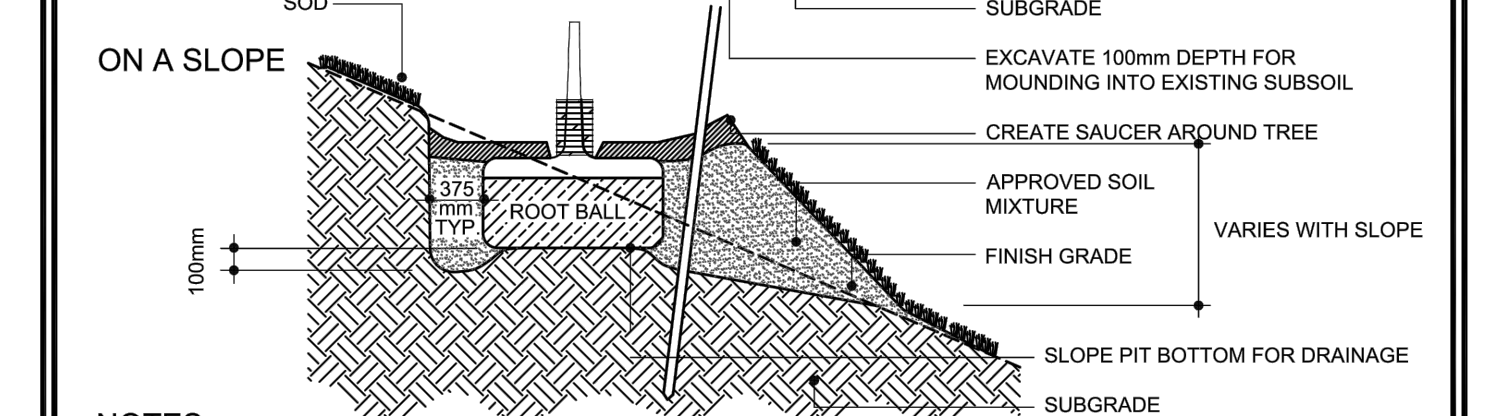
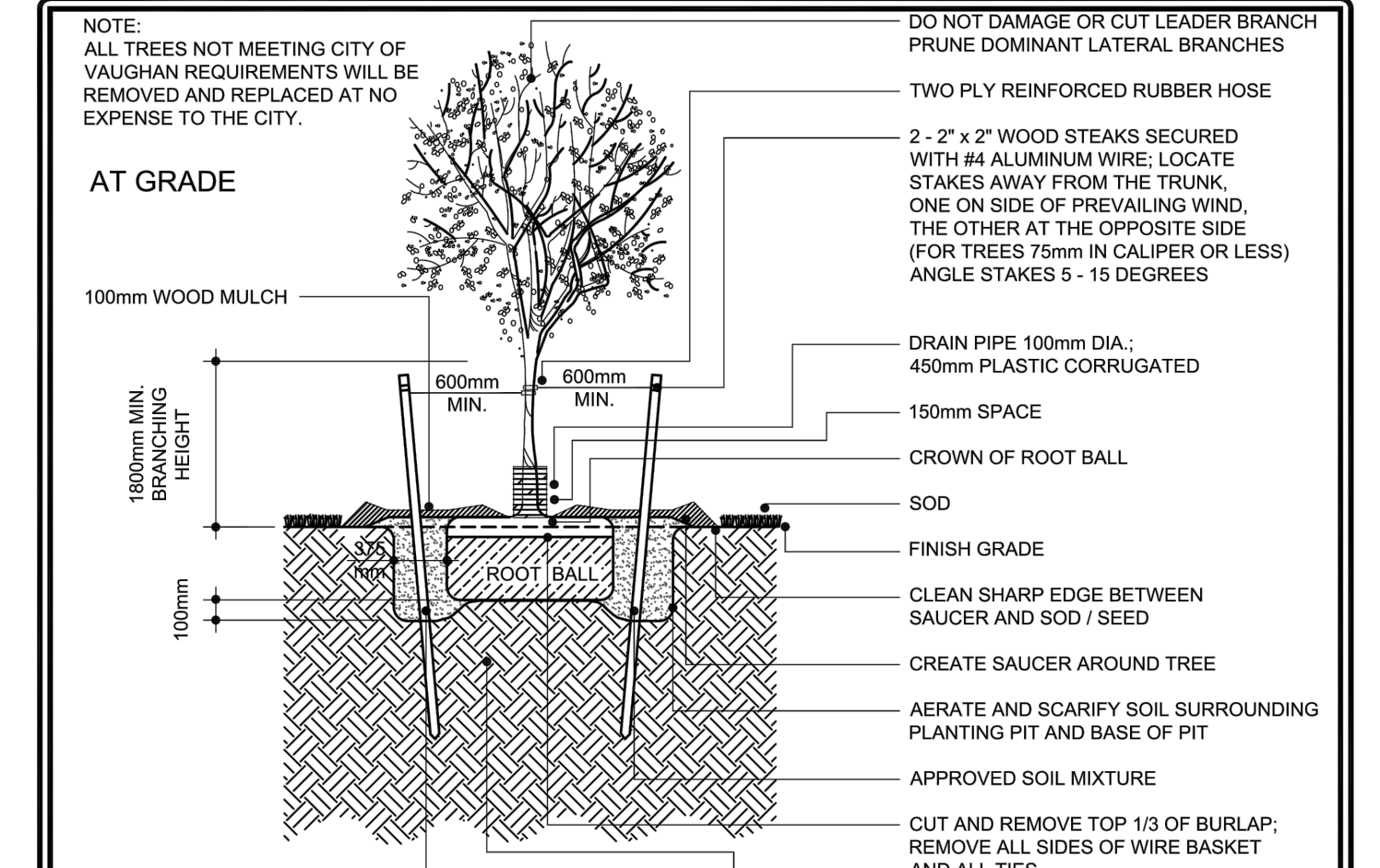


NOTES:

1. 32MPa Class 'A' concrete max. cement/water ratio 0.5 @ 28 days with 6% air entrainment.
2. Concrete to have broom finish.
3. Expansion joints to be located every 6m and where concrete paving abuts other structures or buildings.
4. Contraction joints to be located at minimum intervals of 1.5m. To be formed with a double edger in fresh concrete, then saw cut to a depth of 30mm.
5. Concrete to be sprayed with white pigment curing compound immediately after finishing.
6. All dimensions are in millimetres.



POURED-IN-PLACE CONCRETE PAVING IN URBAN AREAS DETAIL  
DRAWN & DESIGNED: URBAN DESIGN STD. DWG. NO. ULA 301  
DATE: 03/01/2011

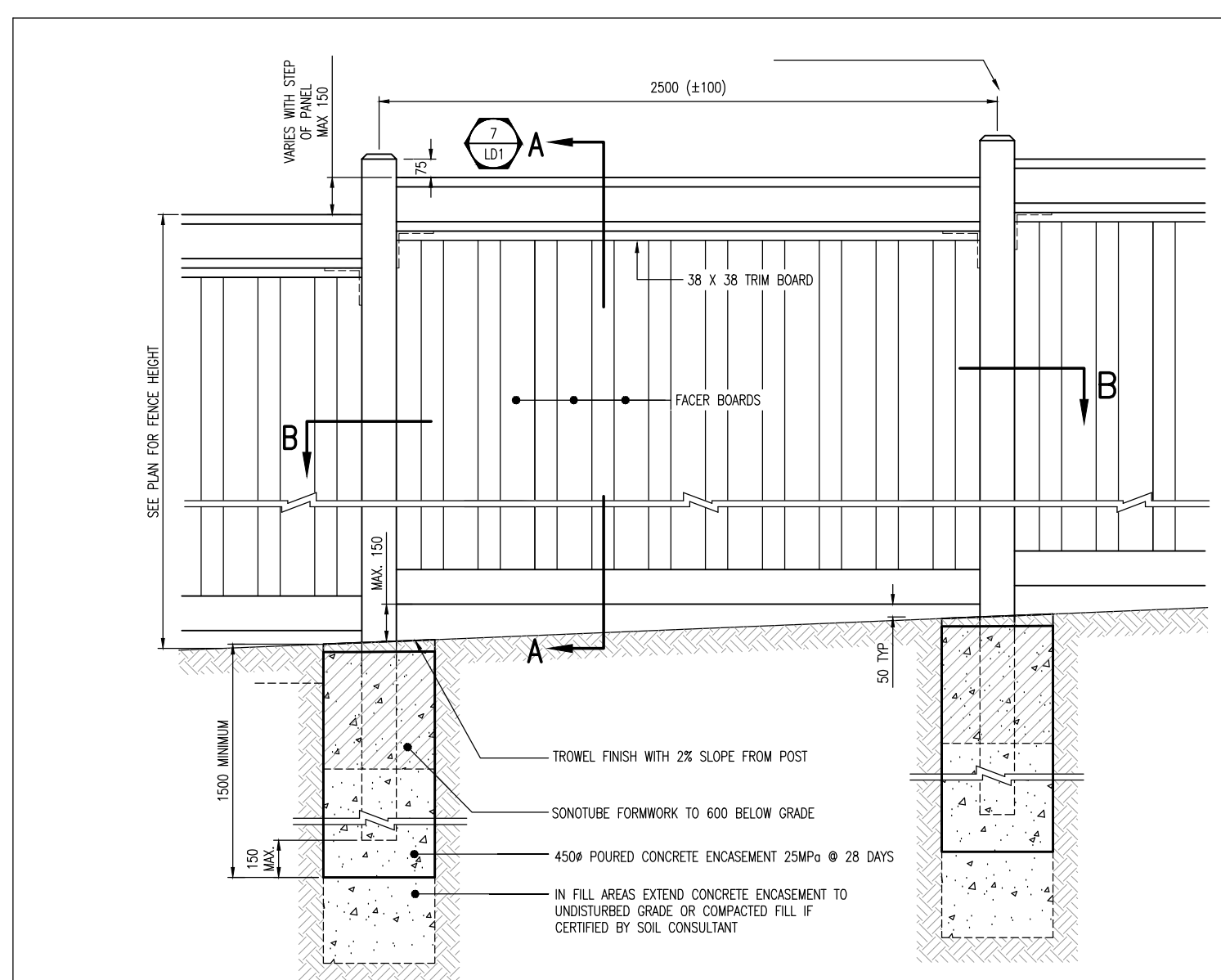


NOTES:

1. Position crown of root ball 50mm above finish grade to allow for settling.
2. Do corrective pruning to retain natural form of tree as directed by City Forestry Supervisor.
3. Water all plant material sufficiently to maintain vigorous, healthy growth from time of delivery/ installation until the end of the specified guarantee period.
4. Stake height shall be a minimum of 1.5 metres above finish grade.
5. For trees planted within planting or shrub beds, delete saucer around base of tree.
6. Remove all tree guards/ stakes 12 months after acceptance/ assumption or as specified.
7. No tree pits shall be left open overnight.
8. Do not allow air pockets when backfilling.
9. All dimensions are in millimetres.



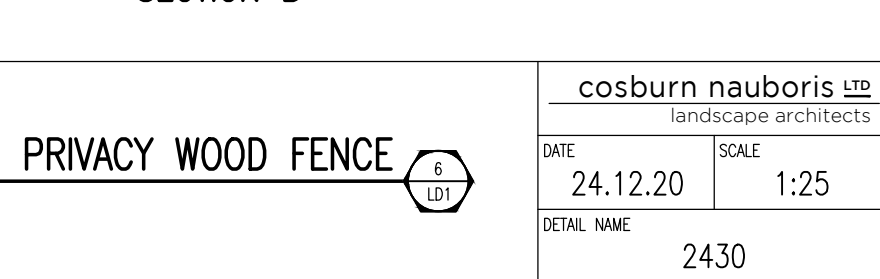
DECIDUOUS TREE PLANTING DETAIL FOR TREES UNDER 90mm IN CALIPER  
DRAWN & DESIGNED: URBAN DESIGN STD. DWG. NO. ULA 101  
DATE: 03/01/2011



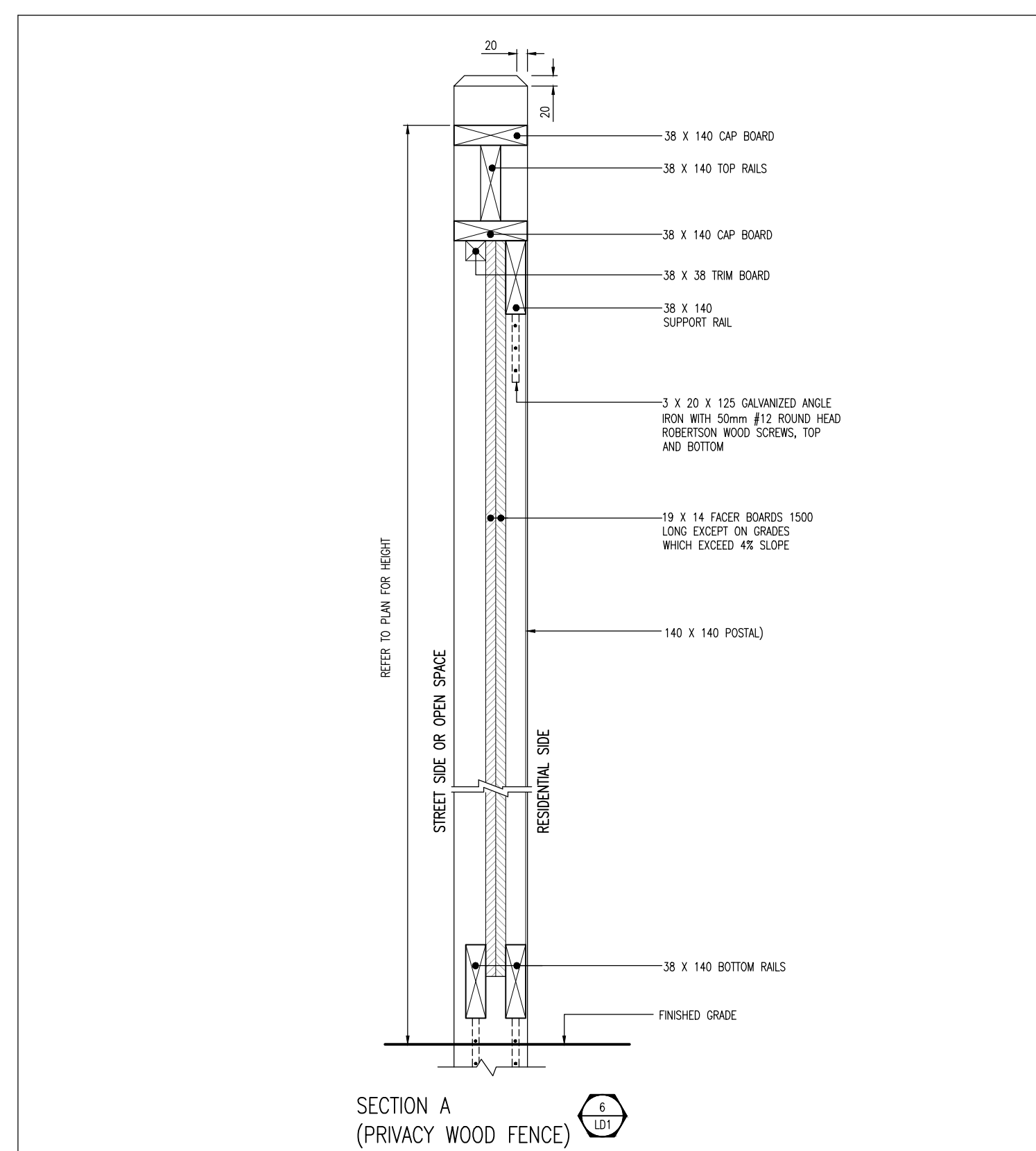
ELEVATION (STREET SIDE)

- 1) REFER TO FENCING NOTES
- 2) FOR RESIDENTIAL SIDE SEE DETAIL
- 3) 19x140 BOARD WIDTHS MAY VARY SLIGHTLY - ADJUST GAPS BETWEEN ADJACENT BOARDS TO ENSURE OVERLAP REMAINS CONSISTENT ALONG FACE OF FENCE PANEL.

SECTION B

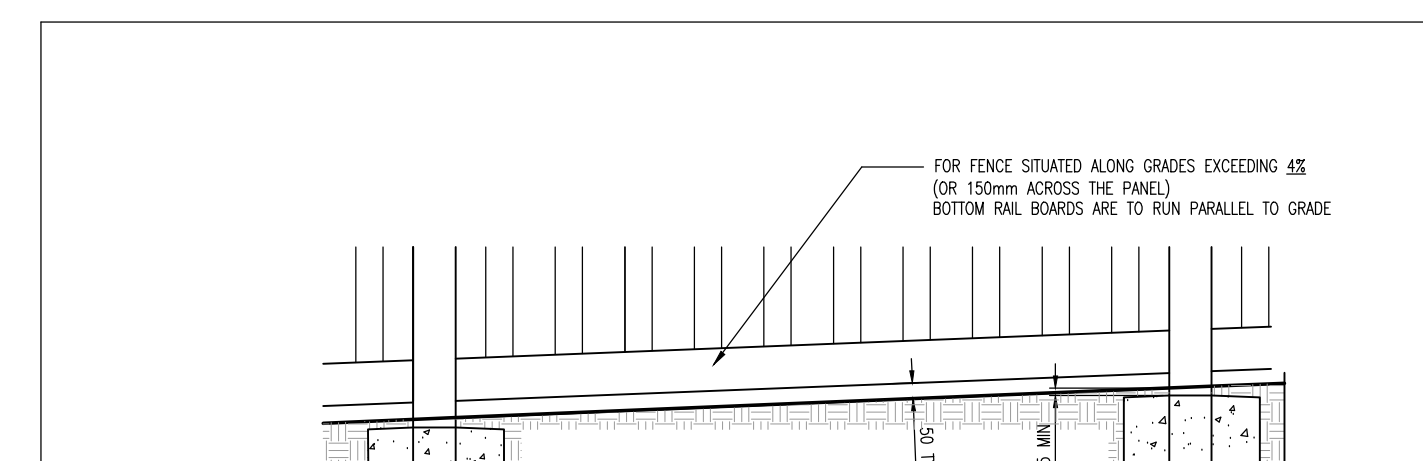


cosburn nauboris LTD  
landscape architects  
DATE: 24.12.20 SCALE: 1:25  
PROJECT: 2430

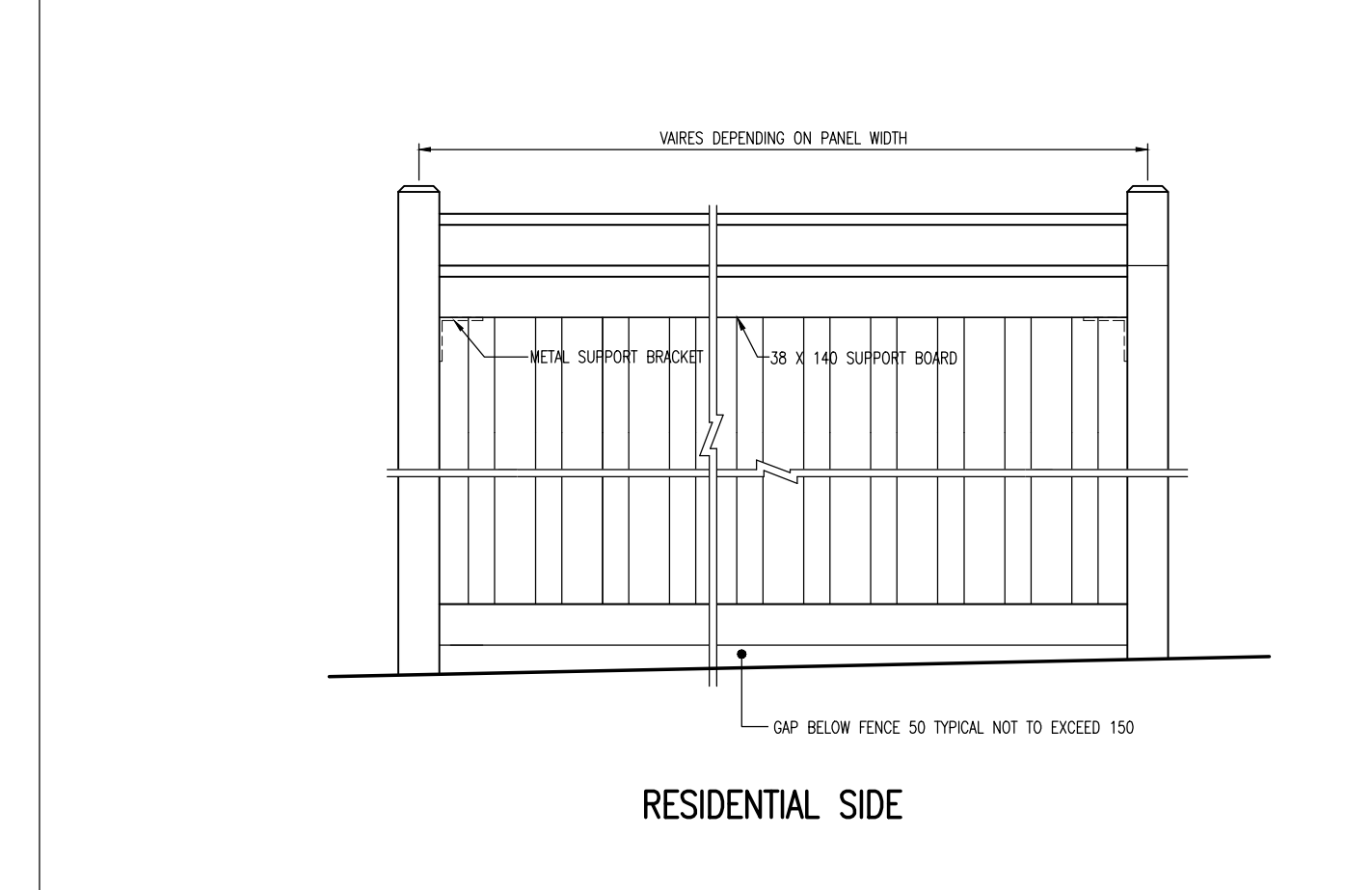


SECTION A (PRIVACY WOOD FENCE)

cosburn nauboris LTD  
landscape architects  
DATE: 24.12.20 SCALE: 1:10  
PROJECT: 2430



DETAIL 2 - FOR GRADES EXCEEDING 4%



RESIDENTIAL SIDE

- 1) REFER TO FENCING NOTES
- 3) 19x140 BOARD WIDTHS MAY VARY SLIGHTLY - ADJUST GAPS BETWEEN ADJACENT BOARDS TO ENSURE OVERLAP REMAINS CONSISTENT ALONG FACE OF FENCE PANEL.

cosburn nauboris LTD  
landscape architects  
DATE: 24.12.20 SCALE: 1:25  
PROJECT: 2430

1. ALL MATERIALS, COMPONENTS AND WORKMANSHIP TO CONFORM TO LOCAL BY-LAWS.
2. CONSTRUCT FENCING IN ACCORDANCE WITH CAN3-086.1-94 EXCEPT WHERE SPECIFIED.
3. WOOD FENCING TO NLGA STANDARD GRADING RULES FOR CANADIAN LUMBER 2003 EFFECTIVE DECEMBER 1, 2005.
4. ALL TIMBER CUTS SHALL BE STRAIGHT AND PLUMB.
5. ALL WOOD SHALL BE DRESSED FOUR SIDES.
6. ALL WOOD SHALL BE PRESSURE TREATED (NOT SPRUCE OR HEMLOCK), SELECTED MAINLY FOR GOOD APPEARANCE AND FREE OF WANE AND BARK POCKETS. ALL TORN GRAIN SHALL BE FREE, ELIMINATED BY SANDING AND PLANING. MEMBERS EXHIBITING MODERATE TO HEAVY KNOTS SHALL BE WELL DISTRIBUTED THROUGHOUT THE INSTALLATION. WARPED OR CLIPPED BOARDS ARE NOT ACCEPTABLE.
7. ALL ACOUSTIC AND PRIVACY POSTS SHALL BE "No. 1 STRUCTURAL" (NLGA 1314). ALL FACER BOARDS SHALL CONFORM TO NLGA 2046 "SELECT KNOTTY".
8. ACOUSTIC FENCE POST SIZES  
140 x 140 FOR FENCE HEIGHT <math>\leq 2200</math>  
140 x 184 FOR FENCE HEIGHT >math>2200</math> AND <math>\leq 2600</math>
9. ACOUSTIC FENCE FOOTINGS - NOT APPLICABLE TO BERMS (450 DIA. 2500 WIDE POST SPACING MAX)  
1500 FOR FENCE HEIGHTS <math>\leq 2000</math>  
1800 FOR FENCE HEIGHTS >math>2000</math> AND <math>\leq 2400</math>  
2000 FOR FENCE HEIGHTS >math>2400</math> AND <math>\leq 2600</math>
10. FENCES CONSTRUCTED ON BERMS:  
(A) EXTEND FOOTING 300MM INTO UNDISTURBED SUB-GRADE.  
(B) COMPACT BERMS TO A MINIMUM OF 100% STANDARD PROCTOR DENSITY.  
(C) CONSTRUCT BERMS WITH A 1000MM FLAT TOP AND SIDE SLOPE NO STEEPER THAN 3:1.
11. FOR ACOUSTIC FENCES USING PRESSURE TREATED LUMBER (NOT SPRUCE OR HEMLOCK), MINIMUM PANEL THICKNESS WILL BE 45MM (THIS IS EQUIVALENT TO 20kg/m<sup>2</sup> FACE DENSITY).
12. ALL LUMBER SIZES ARE ACTUAL SIZES RATHER THAN NOMINAL SIZES.
13. ACOUSTIC FENCE SHALL BE FREE OF ALL HOLES, GAPS AND CRACKS.
14. WHEN USING CONSTRUCTION METHOD OPTION B CONTRACTOR MAY PROVIDE ALTERNATIVE FACER BOARD THICKNESS TO THE APPROVAL OF THE LANDSCAPE ARCHITECT.
15. LAG SCREWS, BOLTS, FASTENERS, AND BRACKETS SHALL BE GALVANIZED AND CONFORM TO ASTM A307.
16. ALL GALVANIZING TO BE HOT DIPPED IN CONFORMANCE TO CSA STANDARD 6164.
17. COUNTERSINK ALL LAG SCREWS AND BOLTS AND DRIVE ALL NAIL HEADS BELOW SURFACE OF WOOD.
18. CONCRETE TO HAVE MINIMUM COMPRESSIVE STRENGTH OF 25 MPa @ 28 DAYS WITH 5-7% AIR ENTRAINMENT.

cosburn nauboris LTD  
landscape architects  
DATE: 24.12.20 SCALE: 1:25  
PROJECT: 2430

3	Issued for ZBA	SKC	24 12 20
2	Issued for ZBA	FC	24 09 18
1	Issued for ZBA	MB	23 06 16
No	Revision		By Yr Mo Da

Approved as to form in reliance upon the professional skill and ability of the landscape architect, Cosburn Nauboris Limited, as to design and specifications.

Director of Development Planning, City of Vaughan Date

All drawings and designs are the property of Cosburn Nauboris Limited and may not be used or reproduced without permission. This drawing must not be scaled.

Invalid Unless Signed Original



cosburn nauboris LTD  
landscape architects  
cosburnnauboris.ca

VAUGHAN DEVELOPMENT PLANNING DEPARTMENT-URBAN DESIGN SECTION  
239 - 251 WOODBRIDGE AVENUE  
CITY OF VAUGHAN

DETAILS

Drawn by	FC	Scale	AS SHOWN
Checked by	HN	Plot Date	2024-12-20
Approved by	HN	Project	2430

LD1  
Drawing No.