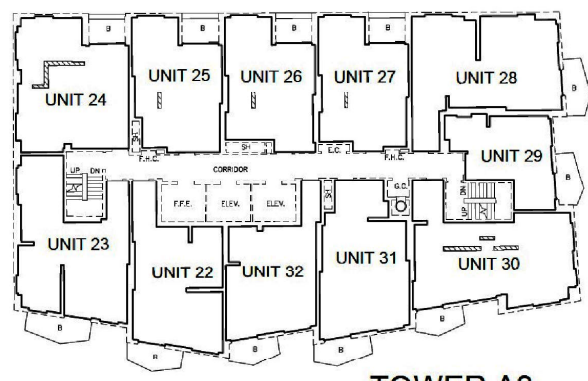


BLOCK 15, PLAN 65M-4805  
PIN 03276-0972(LT)(0.30 RESERVE)

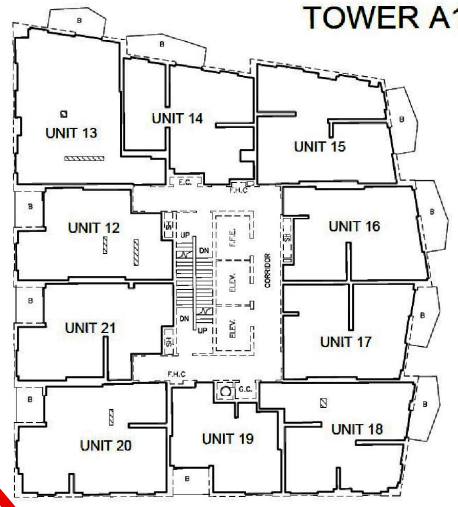


**TOWER A3**

BLOCK 4, PLAN 65M-4805  
PART 4, PLAN 65R-40417  
PIN 03276-0981(LT)  
(X)(X)(X)

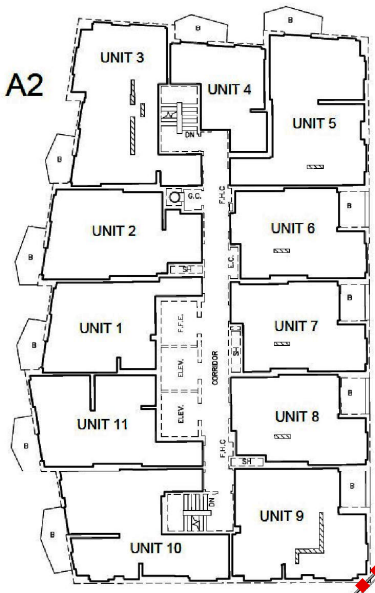
JANE STREET

CALDARI ROAD




**TOWER A1**

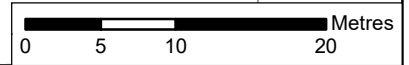
**TOWER A2**



BLOCK 16, PLAN 65M-4805  
PIN 03276-0973(LT)(0.30 RESERVE)

ABEJA STREET

 Subject Lands



**Proposed Draft Plan of  
Condominium (Standard) - Levels 8,  
10, 12, 14, 16, 18, 20, 22 and 24**  
LOCATION: 10 Abeja Street, 474 and  
498 Caldari Road, 9093, 9095, 9097, and  
9099 Jane Street, Block 4 of Plan 65M-4805  
APPLICANT: Rutherford Land Development Corp.



**Attachment**  
FILE:  
19CDM-24V007  
RELATED FILES:  
19T-18V001 and DA.19.010  
DATE:  
January 21, 2025

**6**