



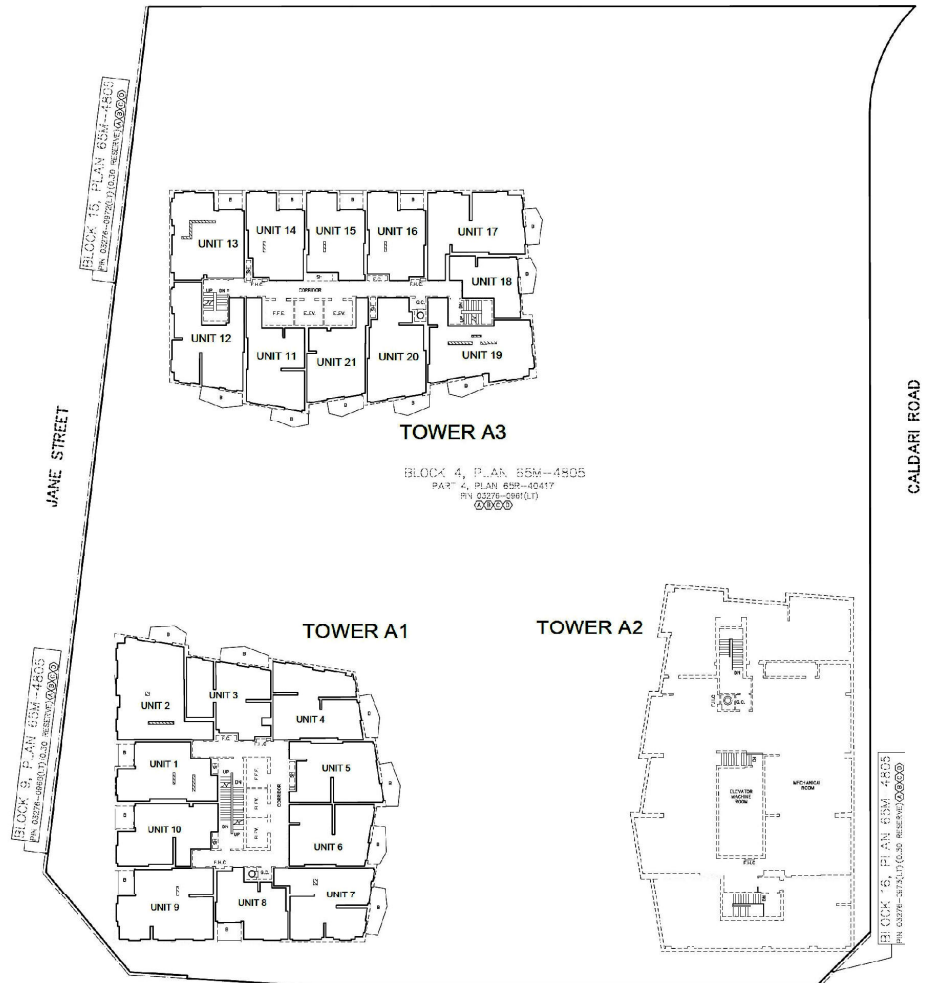
**TOWER A3**  
 BLOCK 4, PLAN 65M-4805  
 PART 4, PLAN 65M-40417  
 RV 02776-0981(L1)  
 ©©©©

**TOWER A1**

**TOWER A2**

**Level 26**

Not to Scale



**TOWER A3**  
 BLOCK 4, PLAN 65M-4805  
 PART 4, PLAN 65M-40417  
 RV 02776-0981(L1)  
 ©©©©

**TOWER A1**

**TOWER A2**

**Level 27**

# Proposed Draft Plan of Condominium (Standard) - Levels 26 and 27

**LOCATION:** 10 Abeja Street, 474 and 498 Caldari Road, 9093, 9095, 9097, and 9099 Jane Street, Block 4 of Plan 65M-4805

**APPLICANT:** Rutherford Land Development Corp.



# Attachment

**FILE:** 19CDM-24V007  
**RELATED FILES:** 19T-18V001 AND DA.19.010  
**DATE:** January 21, 2025

# 8