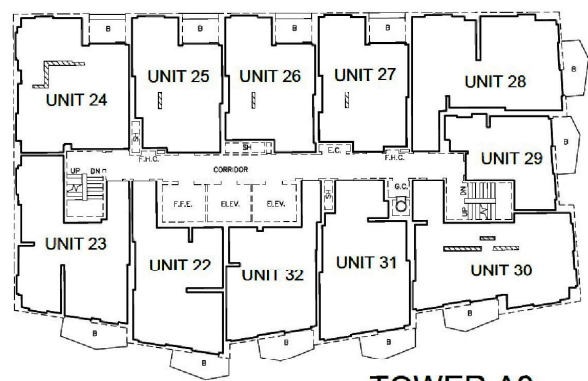


BLOCK 15, PLAN 65M-4805
PIN 03276-0967(LT) (0.30 RESERVE)

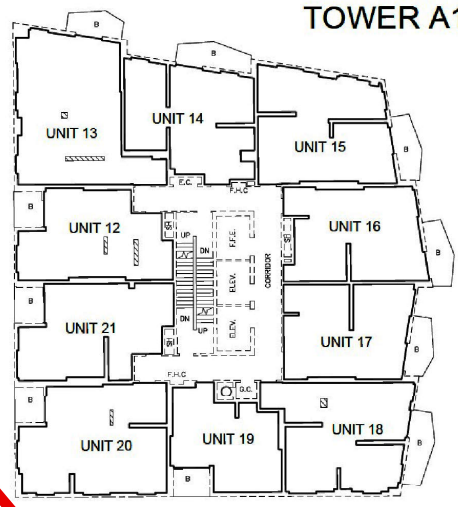


TOWER A3

BLOCK 4, PLAN 65M-4805
PART 4, PLAN 65R-40417
PIN 03276-0961(LT)
(X)(X)(X)

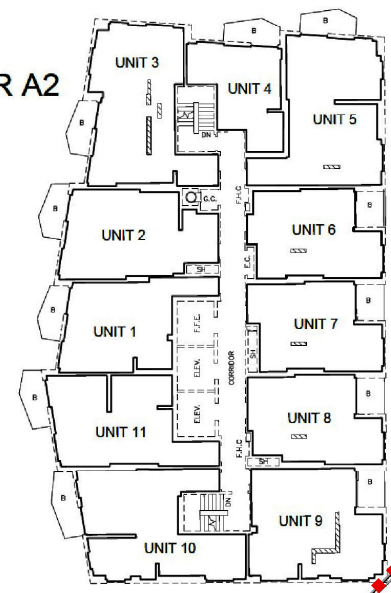
JANE STREET

CALDARI ROAD



TOWER A1


TOWER A2

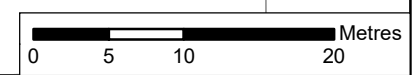


BLOCK 16, PLAN 65M-4805
PIN 03276-0973(LT) (0.30 RESERVE)

BLOCK 9, PLAN 65M-4805
PIN 03276-0966(LT) (0.30 RESERVE)

ABEJA STREET

 Subject Lands



**Proposed Draft Plan of
Condominium (Standard) - Levels 9,
11, 13, 15, 17, 19, 21, 23 and 25**
LOCATION: 10 Abeja Street, 474 and
498 Caldari Road, 9093, 9095, 9097, and
9099 Jane Street, Block 4 of Plan 65M-4805
APPLICANT: Rutherford Land Development Corp.



Attachment
FILE:
19CDM-24V007
RELATED FILES:
19T-18V001 and DA.19.010
DATE:
January 21, 2025

7