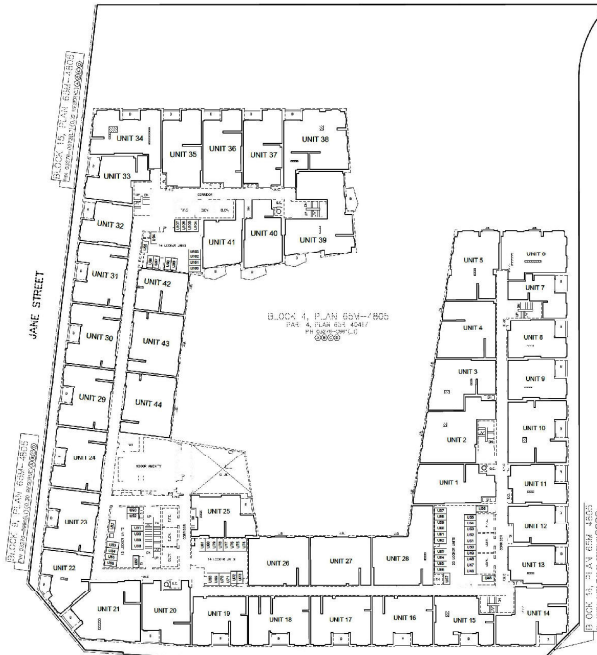




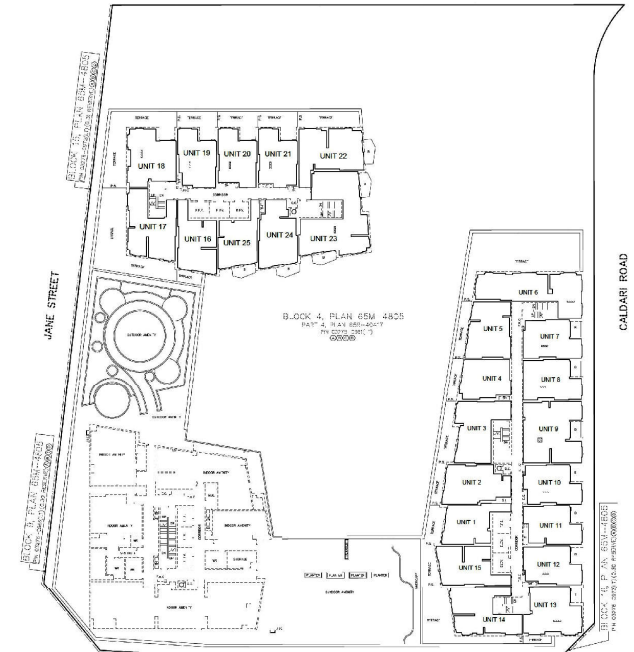
ABEJA STREET

Level 3



ABEJA STREET

Level 4



ABEJA STREET

Level 5

Not to Scale

Proposed Draft Plan of Condominium (Standard) - Levels 3, 4 and 5

LOCATION: 10 Abeja Street, 474 and 498 Caldari Road, 9093, 9095, 9097, and 9099 Jane Street, Block 4 of Plan 65M-4805

APPLICANT: Rutherford Land Development Corp.



Attachment

FILE:
19CDM-24V007

RELATED FILES:
19T-18V001 AND DA.19.010

DATE: January 21, 2025

4