

**ACCESSIBILITY ADVISORY COMMITTEE – OCTOBER 28, 2024**

**COMMUNICATIONS**

---

**Distributed October 21, 2024**

**Item**

C1. Presentation material.

3

**Disclaimer Respecting External Communications**

Communications are posted on the City's website pursuant to Procedure By-law Number 7-2011. The City of Vaughan is not responsible for the validity or accuracy of any facts and/or opinions contained in external Communications listed on printed agendas and/or agendas posted on the City's website.

**Please note there may be further Communications.**

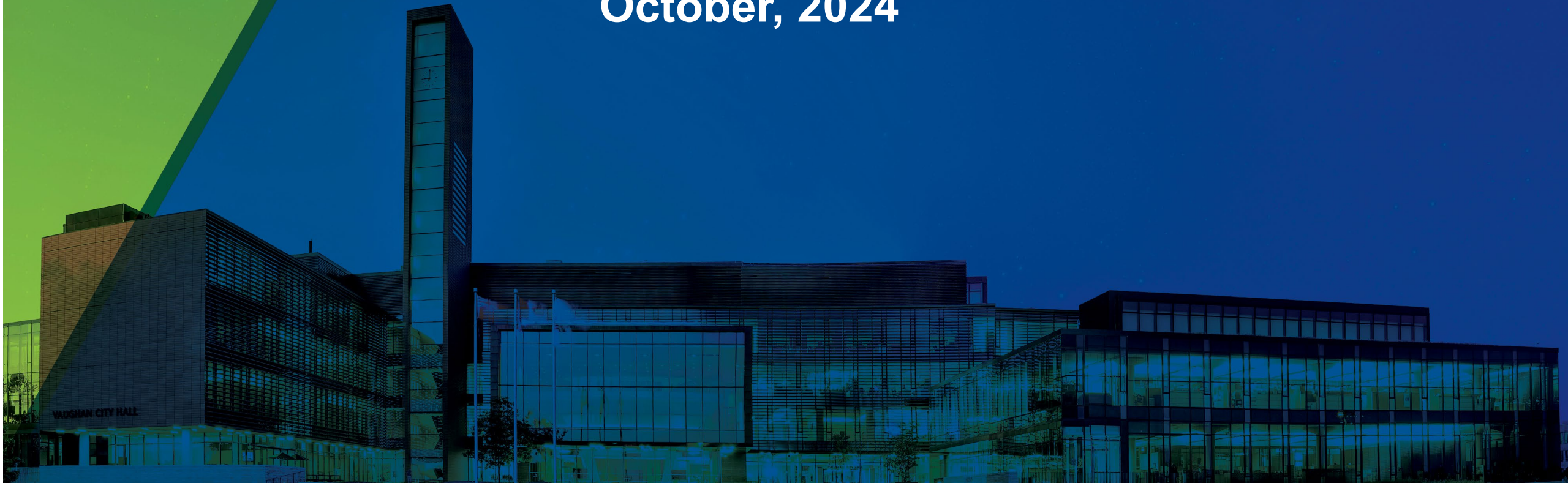


**C1**  
**Communication**  
**Accessibility Advisory**  
**Committee – October 28, 2024**  
**Item No. 3**

# Doctors McLean District Park

## Accessibility Advisory Committee

October, 2024



# Land Acknowledgement

---

We respectfully acknowledge that the City of Vaughan is situated in the Territory and Treaty 13 lands of the Mississaugas of the Credit First Nation. We also recognize the traditional territory of the Huron-Wendat and the Haudenosaunee. The City of Vaughan is currently home to many First Nations, Métis and Inuit people today. As representatives of the people of the City of Vaughan, we are grateful to have the opportunity to work and live in this territory.

## Project Team

---

Alexis Moxley – Project Manager, City of Vaughan

Markus Hillar – Schollen & Company Inc.,  
Team Lead and Landscape Architect

Andrew Lehan – Entuitive, Structural Engineer

Rob Amos – Aquafor Beech Ltd., Hydraulic and Civil  
Engineer

Sara Jane Souliere – Indigenous Consultation Lead,  
Cambium Indigenous Professional  
Services (CIPS)

## Purpose

---

Collaborating with the City's Accessibility Committee to inform of the design standards proposed to accommodate park users of all ages and abilities to access all pathways and features proposed within Doctors McLean District Park.

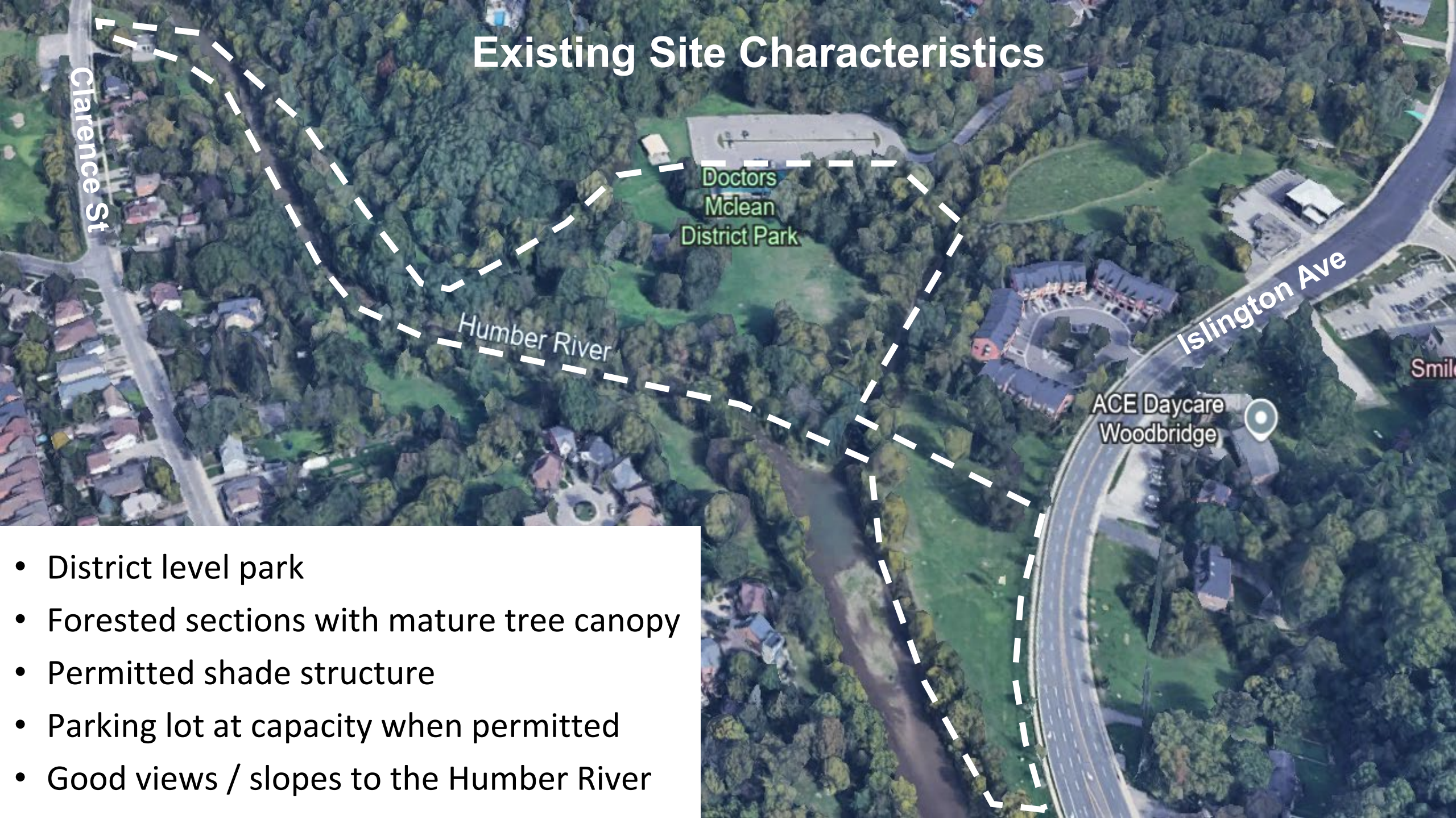
# Regulations and Guidance

---

The park design is guided by the following regulations and principles:

- Accessibility for Ontarians with Disabilities Act (AODA) - *O. Reg. 191/11: Integrated Accessibility Standards, Jan 2024*
- City of Vaughan Multi-Year Accessibility Plan (MYAP) - *2023-2027*
- Crime Prevention Through Environmental Design (CPTED)

# Existing Site Characteristics



- District level park
- Forested sections with mature tree canopy
- Permitted shade structure
- Parking lot at capacity when permitted
- Good views / slopes to the Humber River

# Proposed Park Enhancements

---

**Improvements to Doctors McLean Park will include:**





- Key trail connections to multi-use path system
- An updated playground
- A new splashpad
- A replacement shade structure
- New educational and interpretive signage
- Restoration planting





**New Accessible Pathways**

**Existing Multi-use Pathway**

-  **Bridge**
-  **Adventure play space**
-  **Water play**
-  **New shade shelter**

ML Montessori School

Doctors Mclean District Park

Humber River

ACE Daycare Woodbridge

Smile

# Accessible Park Design:

---

## Design considerations include:

- Accessible tables
- Space between tables to access with mobility devices
- Universally accessible pathways and grades
- Accessible parking spaces nearest the pavilion and new shelter
- Tactile indicators and tonal contrast in changes of grade or paving
- Way finding and safety signage



**Accessible Pathways**

**Level Access Points**

**Doctors  
Mclean  
District Park**

**Loop Path**

**Level Field**



**Adventure play space**



**Water play**

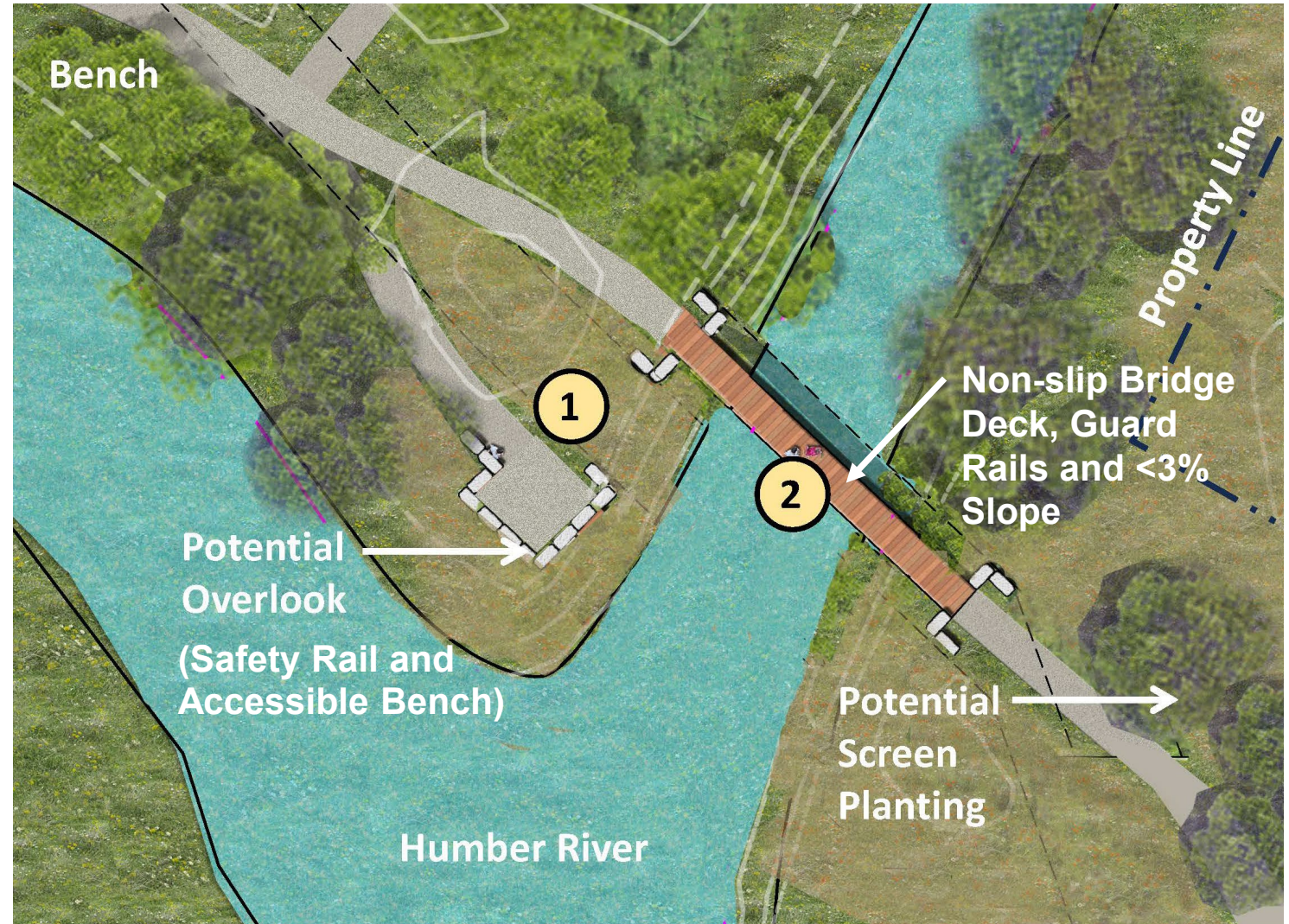
## Accessible Pathway Design:

---

- Running slopes of 5% where possible, cross fall of 2% (railings where greater than 6.6% slope)
- 3.0m wide multi-use path, hard surface
- Clear buffer either side of paths
- Guardrails where changes in grade of  $> 600\text{mm}$
- Slip resistant finishes on all surfaces



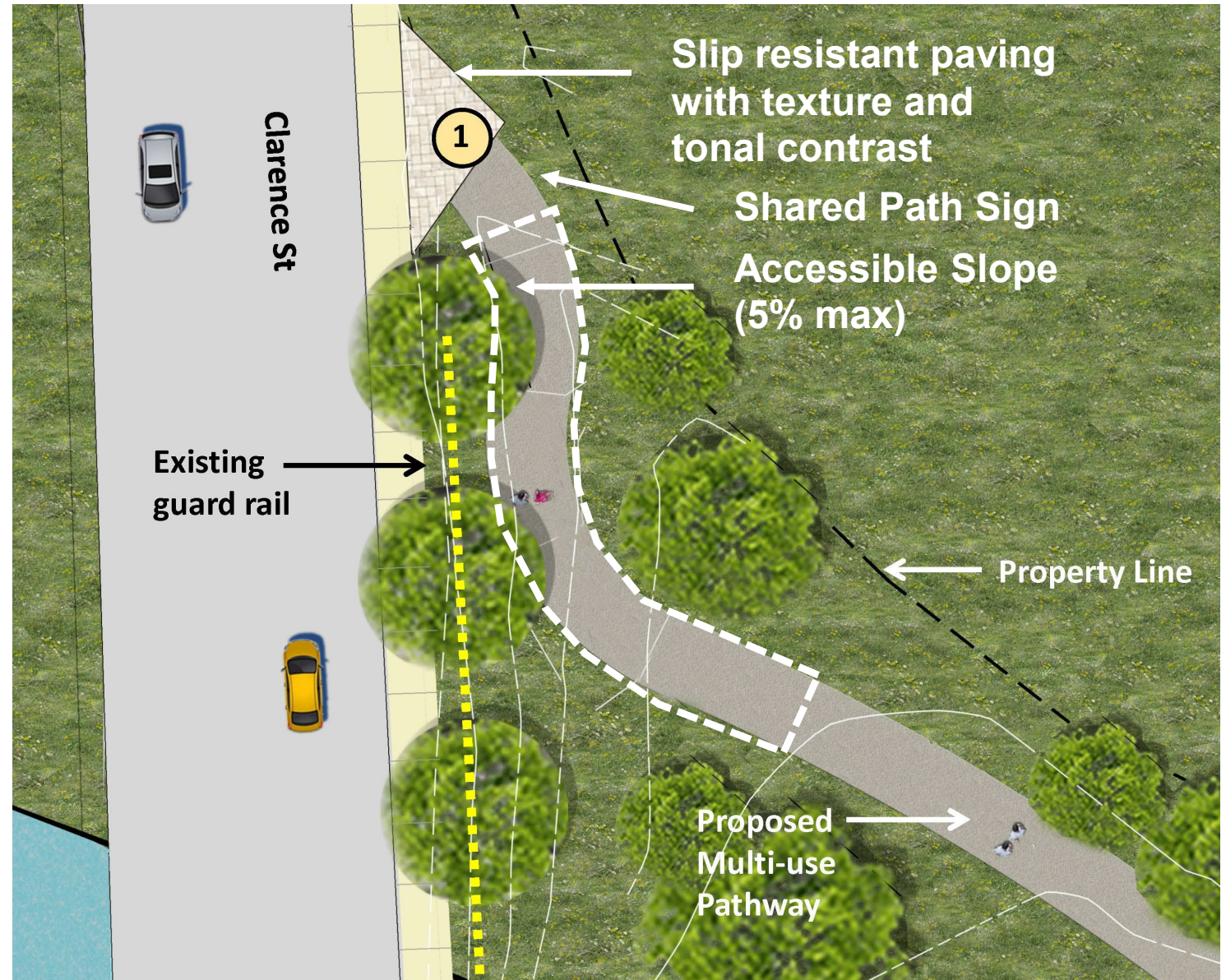
# Bridge and Overlook:



# New Shelter, Accessible Parking & Paths:



# Park Entry Points



# Park Entry Points

---

Entry point improvements will include:

- Signage meeting AODA
- Paving with tonal contrast and slip resistance
- Access paths with grades of max. 5% running slope
- Tactile indicators at abrupt changes of grade





# Water Play

---

- 'Dry' space to allow navigation and avoid water spray.
- The activator buttons emit a 'beep'
- The slope of the splashpad is a maximum of 1-2% slope
- Minimum 4' of space between the features
- Zones of play for appropriate ages and ability
- Emphasizing accessible and safe play through discovery



# Adventure Play Space

- Play structures comprise components for young kids and older teens (separated uses for safety)



**Climber modified to open side with mesh and transfer platform**



**Log climbing frame**



**Frame swing with accessible seat**



# Adventure Play Space

## Universal design and accessibility:

- Structures include safety buffers and are certified
- Pour in place rubberized surface
- Larger climbers include separate accessible access landing



**Musical chimes-  
auditory play**



**Low ground accessible  
play feature**