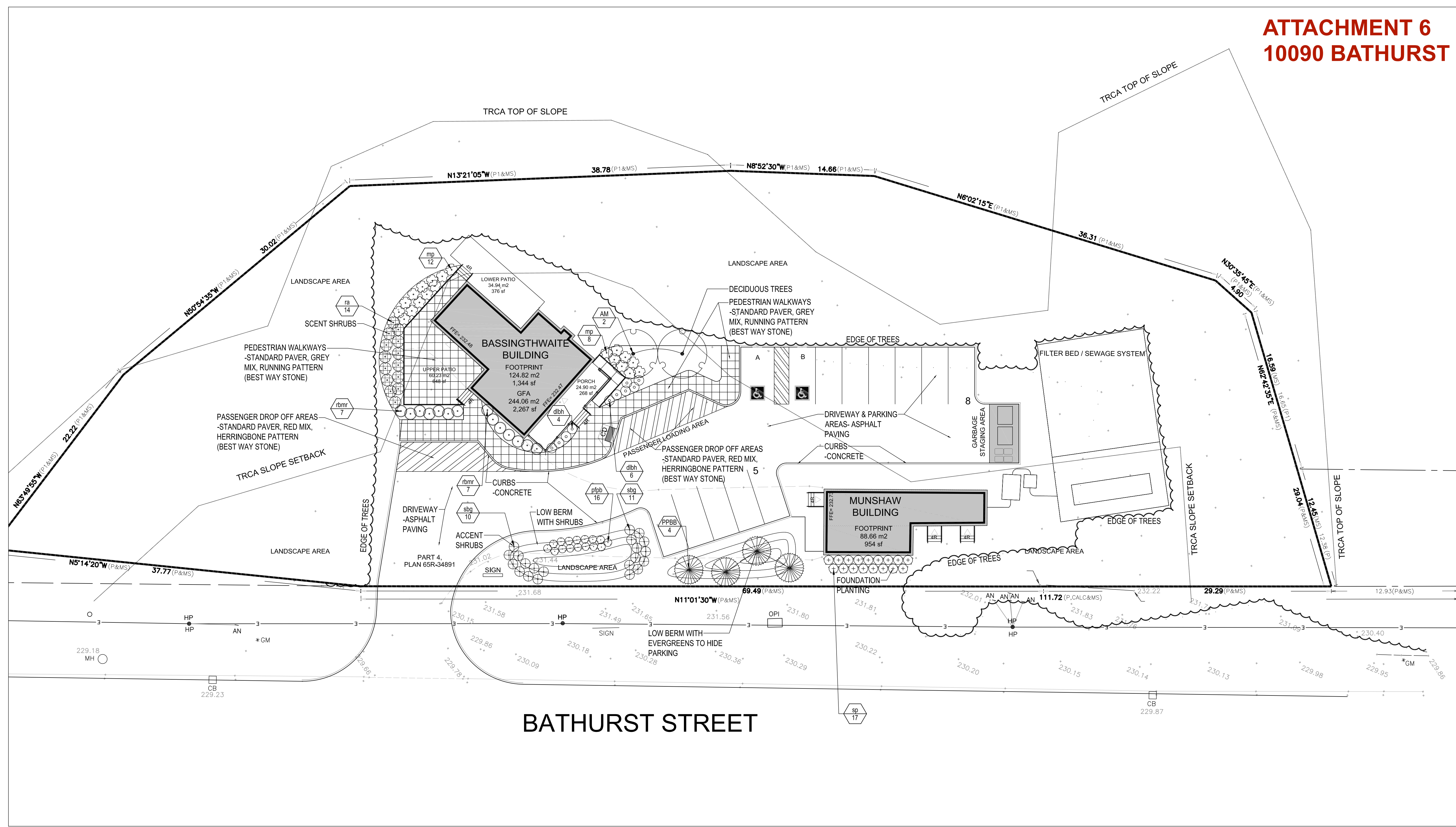


ATTACHMENT 6 10090 BATHURST



NOT FOR CONSTRUCTION

LEGEND
ALL ITEMS ARE TO BE PROVIDED UNLESS OTHERWISE NOTED

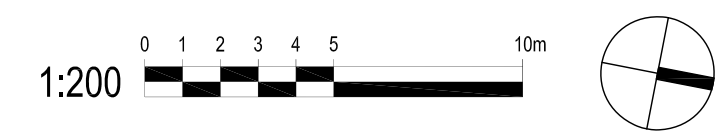
- DECIDUOUS TREE
- EVERGREEN TREE
- SHRUB PLANTING
- PAVED SURFACE
- BERM

no.	revision	date	by
3	ISSUED FOR REVIEW	2024-08-21	TL
2	ISSUED FOR REVIEW	2024-08-08	TL
1	ISSUED FOR REVIEW	2024-07-08	TL

CONTRACTOR MUST VERIFY ALL DIMENSIONS ON THE JOB AND REPORT ANY DISCREPANCY TO THE LANDSCAPE ARCHITECT BEFORE PROCEEDING WITH THE WORK.
ALL DRAWINGS AND SPECIFICATIONS ARE INSTRUMENTS OF SERVICE AND THE PROPERTY OF THE LANDSCAPE ARCHITECT WHICH MUST BE RETURNED AT THE COMPLETION OF THE WORK.
ALL DRAWINGS TO BE USED FOR CONSTRUCTION ONLY WHEN SIGNED BY THE LANDSCAPE ARCHITECT.

Signed: _____ Date: _____

STUDIO tla
20 Champlain Blvd, Suite 102 - Toronto ON - M3H 2Z1 info@studiotla.ca www.studiotla.ca



PLANT SCHEDULE SITE

SYMBOL	CODE	QTY	BOTANICAL NAME	COMMON NAME	CONT.	CAL.	HT.	REMARKS
CONIFEROUS TREES								
	PPBB	4	PICEA PUNGENS 'BABY BLUE'	BABY BLUE SPRUCE	WB		175 CM	
DECIDUOUS TREES								
	AM	2	AMELANCHIER CANADENSIS	SERVICEBERRY	B & B	40MM CAL.		TREE FORM NATIVE
SYMBOL	CODE	QTY	BOTANICAL NAME	COMMON NAME	CONT.	HT.	SPR.	REMARKS
DECIDUOUS SHRUBS								
	dtbh	10	DIERVILLA LONICERA	DWARF BUSH HONEYSUCKLE	CONT.	40 CM		NATIVE
	mp	20	MYRICA PENNSYLVANICA	BAYBERRY	CONT.	60 CM		NATIVE
	pfpb	16	POTENTILLA FRUTICOSA 'PINK BEAUTY'	PINK BEAUTY POTENTILLA	CONT.	60 CM		
	ra	14	RIBES AUREUM	GOLDEN CURRANT	CONT.	60 CM		NATIVE
	rbmr	14	ROSA BLANDA	MEADOW ROSE	CONT.	60 CM		NATIVE
	sp	17	SPIRAEA TRILOBATA	DWARF VANHOUTTEI SPIREA	CONT.	60 CM		
	sbg	21	SPIRAEA X BUMALDA 'GOLDFLAME'	GOLDFLAME SPIREA	CONT.	60 CM		

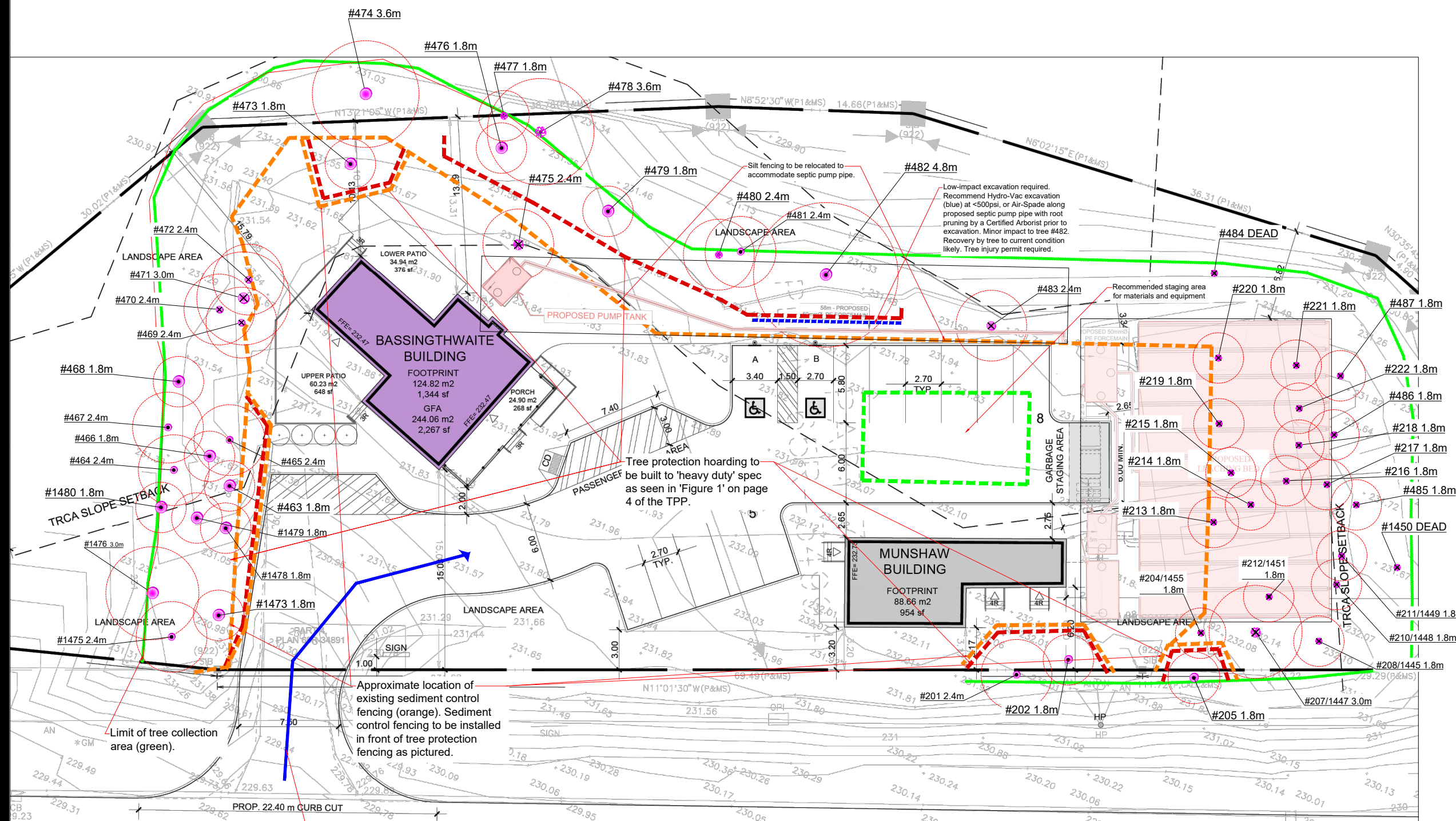
CLIENT
BASSINGTHWAITE BUILDING
10900 BATHURST ST.
VAUGHAN, ONTARIO

PROJECT
LANDSCAPE CONCEPT PLAN

DRAWING
DRAWN: TL
CHECKED:
SCALE: 1:200
DATE: 2024-07-08
PROJECT NO.: 24-132

SHEET NO.: **LP-100C**

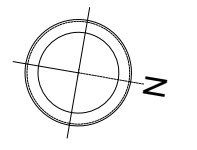
August 21, 2024, 3:30 PM 101-PROJECTS/2024/04-132 10090 BATHURST ST. CAD/01-CURRENT/PL-010-LANDSCAPE/LANDSCAPE PLAN/DWG



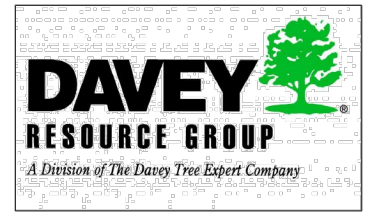
- NOTES:
- All field data have been recorded by ISA Certified Arborist Brent Hocking (ON-2667A)
 - All tree locations are based on the site plan and/or survey supplied by the client, and field observation by the arborist.
 - This plan shall be used in conjunction with the Tree Protection Action Key (TPAK). Specific information regarding tree species, condition, and protection protocols are listed therein.
 - Refer to the Arborist Report prepared for this project for specific instruction regarding tree protection requirements.

PLAN KEY

- TREE RECOMMENDED FOR REMOVAL
- RETAINED TREE
- CONIFEROUS TREE FOR REMOVAL
- RETAINED CONIFEROUS TREE
- REPLACEMENT TREE
- SEDIMENT CONTROL FENCING
- TREE PROTECTION FENCE
- TREE PROTECTION ZONE



No.	DATE	BY	REVISIONS
001	08/21/2024	BH	Tree Protection Plan



TITLE:
Tree Protection Plan
10090 Bathurst St.
Vaughan, ON

CLIENT:
LN Law c/o Sally Campbell

DRAWING NO.: 001	SCALE: 1:325
JOB NO.:	SHEET: 1 of 4

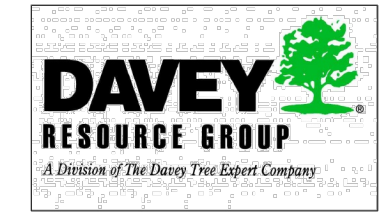
Tree Tag Number	Species	Botanical	DBH (cm) @ 1.4 m	Tree Ownership	Minimum Tree Protection Distance (m)	Health	Structure	Overall Condition	Crown Width (m)	Deadwood (%)	Construction Inside Min TPZ? (Y/N)	Construction Impact (None, Low, Medium, High)	Action	Permit Required? (Y/N)	Recommendations	Notes and Observations
1473	Walnut, Black	<i>Juglans nigra</i>	23	Private	1.8	Good	Fair	Good	4	10	N	None	Preserve	N	Protect with tree protection fencing.	Damaged by falling tree.
1475	Walnut, Black	<i>Juglans nigra</i>	31	Private	2.4	Good	Good	Good	6	10	N	None	Preserve	N	Protect with tree protection fencing.	Pruned for ongoing utility clearance.
1476	Walnut, Black	<i>Juglans nigra</i>	41	Private	3.0	Good	Good	Good	7	10	N	None	Preserve	N	Protect with tree protection fencing.	Pruned for ongoing utility clearance.
1478	Walnut, Black	<i>Juglans nigra</i>	22	Private	1.8	Good	Good	Good	5	10	N	None	Preserve	N	Protect with tree protection fencing.	
1479	Walnut, Black	<i>Juglans nigra</i>	20	Private	1.8	Good	Good	Good	4	10	N	None	Preserve	N	Protect with tree protection fencing.	
1480	Walnut, Black	<i>Juglans nigra</i>	20	Private	1.8	Good	Good	Good	4	15	N	None	Preserve	N	Protect with tree protection fencing.	
463	Walnut, Black	<i>Juglans nigra</i>	28	Private	1.8	Good	Good	Good	6	10	N	None	Preserve	N	Protect with tree protection fencing.	
464	Walnut, Black	<i>Juglans nigra</i>	39	Private	2.4	Good	Good	Good	7	10	N	None	Preserve	N	Protect with tree protection fencing.	
465	Walnut, Black	<i>Juglans nigra</i>	40	Private	2.4	Good	Fair	Good	7	15	N	None	Preserve	N	Protect with tree protection fencing.	Vines growing up trunk.
466	Locust, Black	<i>Robinia pseudoacacia</i>	17	Private	1.8	Good	Good	Good	5	10	N	None	Preserve	N	Protect with tree protection fencing.	
467	Walnut, Black	<i>Juglans nigra</i>	33	Private	2.4	Good	Good	Good	6	10	N	None	Preserve	N	Protect with tree protection fencing.	Vines growing up trunk.
468	Locust, Black	<i>Robinia pseudoacacia</i>	18	Private	1.8	Good	Good	Good	5	15	N		Preserve	N	Protect with tree protection fencing.	
469	Walnut, Black	<i>Juglans nigra</i>	39	Private	2.4	Good	Fair	Good	8	15	Y	Medium	Remove	Y	Remove to mitigate failure risk due to trunk damage, and to accommodate landscaping plan.	Mechanical damage at base of tree.
470	Walnut, Black	<i>Juglans nigra</i>	38	Private	2.4	Good	Good	Good	8	10	Y	Medium	Remove	Y	Remove to accommodate landscaping plan.	Vines growing up trunk.
471	Aspen, Bigtooth	<i>Populus grandidentata</i>	42	Private	3.0	Fair	Poor	Fair	9	15	Y	Medium	Remove	Y	Remove to mitigate failure risk due to trunk damage, and to accommodate landscaping plan.	Vines growing up trunk. Large mechanical wound on rear stem. Canopies of surrounding trees forcing outward growth of canopy toward building.
472	Walnut, Black	<i>Juglans nigra</i>	38	Private	2.4	Good	Fair	Good	9	10	Y	Medium	Remove	Y	Remove to accommodate landscaping plan.	Vines growing up trunk.
473	Locust, Black	<i>Robinia pseudoacacia</i>	20	Private	1.8	Good	Good	Good	8	10	N	None	Preserve	N	Protect with tree protection fencing.	Small mechanical damage wound on trunk.
474	Aspen, Bigtooth	<i>Populus grandidentata</i>	59	Private	3.6	Good	Good	Good	12	15	N	None	Preserve	N	Protect with tree protection fencing.	Vines growing up trunk.
475	Cedar (Arborvitae), Eastern	<i>Thuja occidentalis</i>	40	Private	2.4	Good	Good	Good	6	10	Y	High	Remove	Y	Remove to accommodate proposed septic pump tank.	Small top broken in storm. In direct conflict with proposed septic pump tank.
476	Locust, Black	<i>Robinia pseudoacacia</i>	27	Private	1.8	Good	Good	Good	6	15	N	None	Preserve	N	Protect with tree protection fencing.	Vines growing up trunk.
477	Cedar (Arborvitae), Eastern	<i>Thuja occidentalis</i>	23	Private	1.8	Poor	Poor	Poor	3	75	N	None	Preserve	N	Protect with tree protection fencing.	Mostly dead, 5.5m from fence.
478	Cedar (Arborvitae), Eastern	<i>Thuja occidentalis</i>	55	Private	3.6	Fair	Fair	Fair	6	20	N	None	Preserve	N	Protect with tree protection fencing.	Lightning strike damage in rear stem.
479	Locust, Black	<i>Robinia pseudoacacia</i>	27	Private	1.8	Good	Good	Good	6	10	N	None	Preserve	N	Protect with tree protection fencing.	
480	Cedar (Arborvitae), Eastern	<i>Thuja occidentalis</i>	33	Private	2.4	Fair	Fair	Fair	6	20	N	None	Preserve	N	Protect with tree protection fencing.	Tree tag #481 leaning into tree. affecting structure. 5.5m from fence.
481	Hawthorn Species	<i>Crataegus spp.</i>	40	Private	2.4	Fair	Poor	Fair	10	20	N	None	Preserve	N	Protect with tree protection fencing.	Leaning into tree tag #480. Dead limbs and decay in trunk 5.7m from fence.

- NOTES:
- All field data have been recorded by ISA Certified Arborist Brent Hocking (ON-2667A)
 - All tree locations are based on the site plan and/or survey supplied by the client, and field observation by the arborist.
 - This plan shall be used in conjunction with the Tree Protection Action Key (TPAK). Specific information regarding tree species, condition, and protection protocols are listed therein.
 - Refer to the Arborist Report prepared for this project for specific instruction regarding tree protection requirements.

PLAN KEY

- TREE RECOMMENDED FOR REMOVAL
- RETAINED TREE
- CONIFEROUS TREE FOR REMOVAL
- RETAINED CONIFEROUS TREE
- REPLACEMENT TREE
- SEDIMENT CONTROL FENCING
- TREE PROTECTION FENCE
- TREE PROTECTION ZONE

No.	DATE	BY	REVISIONS
001	08/21/2024	BH	Tree Protection Plan



TITLE:
Tree Protection Plan
10090 Bathurst St.
Vaughan, ON

CLIENT:
LN Law c/o Sally Campbell

DRAWING NO.: 001	SCALE:
JOB NO.:	SHEET: 2 of 4

Tree Tag Number	Species	Botanical	DBH (cm) @ 1.4 m	Tree Ownership	Minimum Tree Protection Distance (m)	Health	Structure	Overall Condition	Crown Width (m)	Deadwood (%)	Construction inside Min TPZ? (Y/N)	Construction Impact (None, Low, Medium, High)	Action	Permit Required? (Y/N)	Recommendations	Notes and Observations
482	Maple, Sugar	<i>Acer saccharum</i>	71	Private	4.8	Good	Good	Good	12	15	Y	Low	Injure	Y	Low -impact excavation required. Recommend Hydro-Vac excavation at <500psi, or Air-Spade along proposed septic pump pipe with root pruning by a Certified Arborist prior to excavation. Minor impact to tree #482. Recovery by tree to current condition likely. Tree injury permit required.	4.5m from fence.
483	Haw thorn Species	<i>Crataegus spp.</i>	37	Private	2.4	Fair	Poor	Fair	9	30	Y	High	Remove	Y	Remove due to conflict with proposed septic pump pipe excavation.	Being taken over by vines and buckthorn.
484	Spruce, White	<i>Picea glauca</i>	24	Private	0.0	Dead/Dying	Dead/Dying	Dead/Dying	3	100	Y	High	Remove	Y	Remove dead tree for safety.	Dead. Overtaken by vines.
220	Spruce, White	<i>Picea glauca</i>	24	Private	1.8	Fair	Fair	Fair	4	15	Y	High	Remove	Y	Remove to accommodate septic field construction.	Being taken over by vines. In direct conflict with proposed septic field.
219	Spruce, White	<i>Picea glauca</i>	28	Private	1.8	Fair	Good	Fair	4	20	Y	High	Remove	Y	Remove to accommodate septic field construction.	Dead wood up trunk until upper canopy. In direct conflict with proposed septic field.
221	Spruce, White	<i>Picea glauca</i>	21	Private	1.8	Good	Good	Good	3	20	Y	High	Remove	Y	Remove to accommodate septic field construction.	Dead wood up trunk until upper canopy. In direct conflict with proposed septic field.
218	Spruce, White	<i>Picea glauca</i>	24	Private	1.8	Good	Good	Good	3	20	Y	High	Remove	Y	Remove to accommodate septic field construction.	Dead wood up trunk until upper canopy. In direct conflict with proposed septic field.
216	Spruce, White	<i>Picea glauca</i>	20	Private	1.8	Fair	Good	Fair	2	20	Y	High	Remove	Y	Remove to accommodate septic field construction.	Dead wood up trunk until upper canopy. In direct conflict with proposed septic field.
215	Spruce, White	<i>Picea glauca</i>	25	Private	1.8	Fair	Good	Fair	3	20	Y	High	Remove	Y	Remove to accommodate septic field construction.	Dead wood up trunk until upper canopy. In direct conflict with proposed septic field.
214	Spruce, White	<i>Picea glauca</i>	26	Private	1.8	Good	Good	Good	3	10	Y	High	Remove	Y	Remove to accommodate septic field construction.	In direct conflict with proposed septic field.
213	Spruce, White	<i>Picea glauca</i>	23	Private	1.8	Good	Good	Good	4	15	Y	High	Remove	Y	Remove to accommodate septic field construction.	In direct conflict with proposed septic field.
212/1451	Spruce, White	<i>Picea glauca</i>	21	Private	1.8	Fair	Fair	Fair	2	25	Y	High	Remove	Y	Remove to accommodate septic field construction.	In direct conflict with proposed septic field.
207/1447	Spruce, White	<i>Picea glauca</i>	44	Private	3.0	Good	Good	Good	10	15	Y	High	Remove	Y	Remove to accommodate septic field construction.	In direct conflict with proposed septic field.
204/1455	Spruce, White	<i>Picea glauca</i>	29	Private	1.8	Good	Good	Good	6	15	Y	High	Remove	Y	Remove to accommodate septic field construction.	In direct conflict with proposed septic field.
205	Buckthorn, Common	<i>Rhamnus cathartica</i>	22	City	1.8	Fair	Fair	Fair	8	25	N	None	Preserve	N	Protect with tree protection fencing.	Overgrown.
208/1445	Spruce, White	<i>Picea glauca</i>	25	Private	1.8	Good	Good	Good	4	15	Y	High	Remove	Y	Remove to accommodate septic field construction.	In direct conflict with proposed septic field.
210/1448	Spruce, White	<i>Picea glauca</i>	22	Private	1.8	Fair	Good	Good	4	20	Y	High	Remove	Y	Remove to accommodate septic field construction.	In direct conflict with proposed septic field.
211/1449	Spruce, White	<i>Picea glauca</i>	24	Private	1.8	Dead/Dying	Dead/Dying	Dead/Dying	2	100	Y	High	Remove	Y	Remove to accommodate septic field construction.	Dead. In direct conflict with proposed septic field.
217	Spruce, White	<i>Picea glauca</i>	24	Private	1.8	Fair	Fair	Fair	3	30	Y	High	Remove	Y	Remove to accommodate septic field construction.	In direct conflict with proposed septic field.
487	Spruce, White	<i>Picea glauca</i>	21	Private	1.8	Good	Good	Good	3	20	Y	High	Remove	Y	Remove to accommodate septic field construction.	In direct conflict with proposed septic field.
1450	Spruce, White	<i>Picea glauca</i>	24	Private	1.8	Dead/Dying	Dead/Dying	Dead/Dying	2	100	Y	High	Remove	Y	Remove dead tree for safety.	Dead. Vines growing up trunk.
485	Spruce, White	<i>Picea glauca</i>	25	Private	1.8	Fair	Good	Good	5	25	Y	High	Remove	Y	Remove to accommodate septic field construction.	Vines growing up trunk. In direct conflict with proposed septic field.
486	Spruce, White	<i>Picea glauca</i>	21	Private	1.8	Fair	Good	Good	3	20	Y	High	Remove	Y	Remove to accommodate septic field construction.	In direct conflict with proposed septic field.
222	Spruce, White	<i>Picea glauca</i>	21	Private	1.8	Good	Good	Good	2	15	Y	High	Remove	Y	Remove to accommodate septic field construction.	In direct conflict with proposed septic field.
202	Linden, American (Basswood)	<i>Tilia americana</i>	20	Private	1.8	Good	Good	Good	6	10	N	None	Preserve	N	Protect with tree protection fencing.	Pruned for ongoing utility clearance.
201	Buckthorn, Common	<i>Rhamnus cathartica</i>	35	City	2.4	Fair	Fair	Fair	7	20	N	None	Preserve	N	Protect with tree protection fencing.	Overgrown.

NOTES:

- All field data have been recorded by ISA Certified Arborist Brent Hocking (ON-2667A)
- All tree locations are based on the site plan and/or survey supplied by the client, and field observation by the arborist.
- This plan shall be used in conjunction with the Tree Protection Action Key (TPAK). Specific information regarding tree species, condition, and protection protocols are listed therein.
- Refer to the Arborist Report prepared for this project for specific instruction regarding tree protection requirements.

PLAN KEY

- TREE RECOMMENDED FOR REMOVAL
- RETAINED TREE
- CONIFEROUS TREE FOR REMOVAL
- RETAINED CONIFEROUS TREE
- REPLACEMENT TREE
- SEDIMENT CONTROL FENCING
- TREE PROTECTION FENCE
- TREE PROTECTION ZONE

No.	DATE	BY	REVISIONS
001	08/21/2024	BH	Tree Protection Plan



TITLE: Tree Protection Plan 10090 Bathurst St. Vaughan, ON	
CLIENT: LN Law c/o Sally Campbell	
DRAWING NO.: 001	SCALE:
JOB NO.:	SHEET: 3 of 4

Figure 1 - Heavy Duty Tree Hoarding Protection Detail (Plywood)

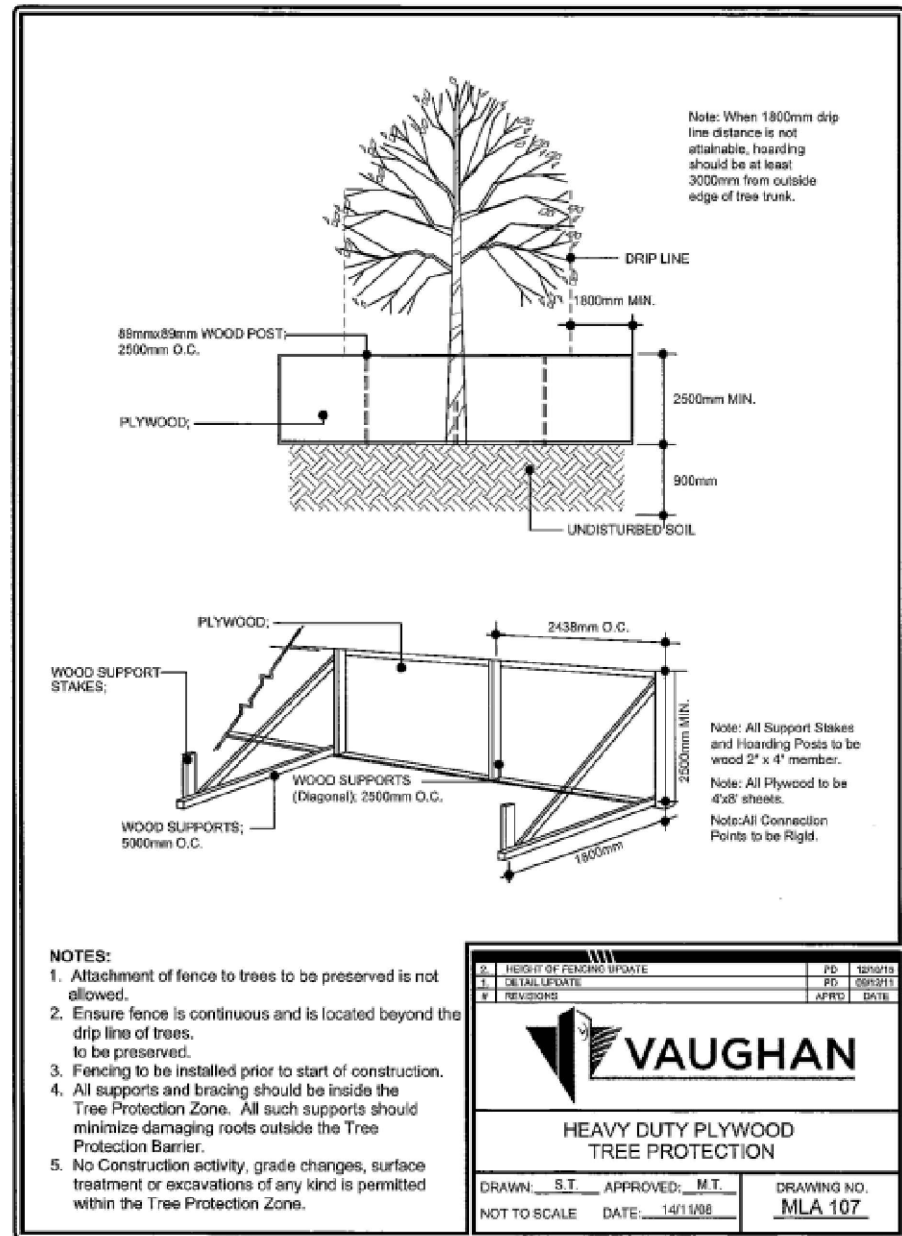
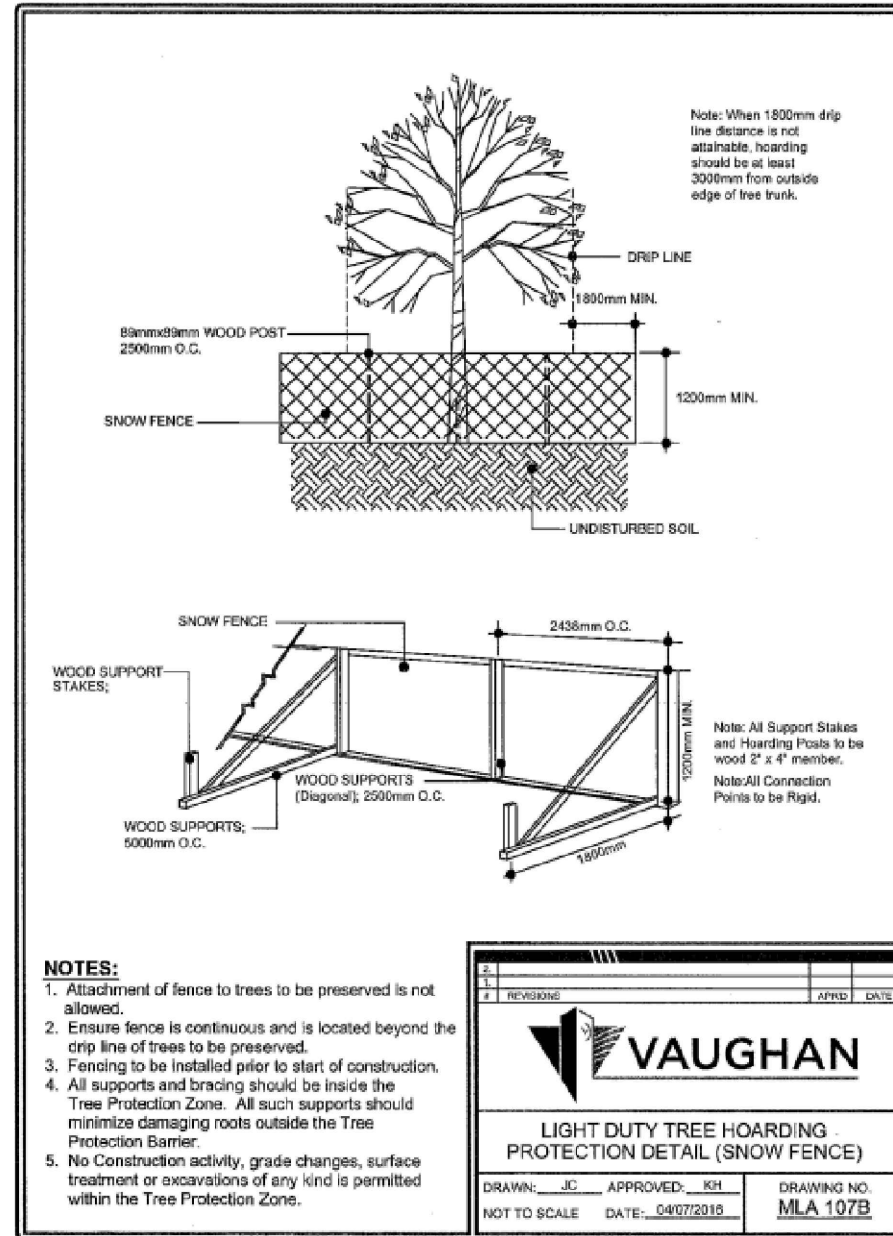


Figure 2 - Light Duty Tree Hoarding Protection Detail (Snow Fence)

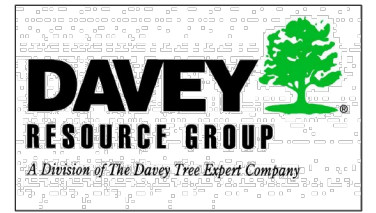


- NOTES:
- All field data have been recorded by ISA Certified Arborist Brent Hocking (ON-2667A)
 - All tree locations are based on the site plan and/or survey supplied by the client, and field observation by the arborist.
 - This plan shall be used in conjunction with the Tree Protection Action Key (TPAK). Specific information regarding tree species, condition, and protection protocols are listed therein.
 - Refer to the Arborist Report prepared for this project for specific instruction regarding tree protection requirements.

PLAN KEY

- TREE RECOMMENDED FOR REMOVAL
- RETAINED TREE
- CONIFEROUS TREE FOR REMOVAL
- RETAINED CONIFEROUS TREE
- REPLACEMENT TREE
- SEDIMENT CONTROL FENCING
- TREE PROTECTION FENCE
- TREE PROTECTION ZONE

No.	DATE	BY	REVISIONS
001	08/21/2024	BH	Tree Protection Plan



TITLE:
 Tree Protection Plan
 10090 Bathurst St.
 Vaughan, ON

CLIENT:
 LN Law c/o Sally Campbell

DRAWING NO.: 001 SCALE:
 JOB NO.: SHEET: 4 of 4