

THE CITY OF VAUGHAN

BY-LAW

BY-LAW NUMBER 110-2019

A By-law to exempt parts of Plan 65M-4640 from the provisions of Part Lot Control.

WHEREAS the Council of the Corporation of The City of Vaughan deems it appropriate to enact a By-law pursuant to Subsection 50(7) of the Planning Act to exempt the lands hereinafter described from the Part Lot Control provisions in Subsection 50(5) of the said Act;

NOW THEREFORE the Council of The Corporation of the City of Vaughan **ENACTS AS FOLLOWS:**

1. Subsection 50(5) of the Planning Act shall not apply to the following lands:

<u>Plan</u>	<u>Description</u>
65M-4640	Block 1

2. This By-law shall take effect upon registration in the appropriate Land Registry Office.

Enacted by City of Vaughan Council this 12th day of June, 2019.

Hon. Maurizio Bevilacqua, Mayor

Todd Coles, City Clerk

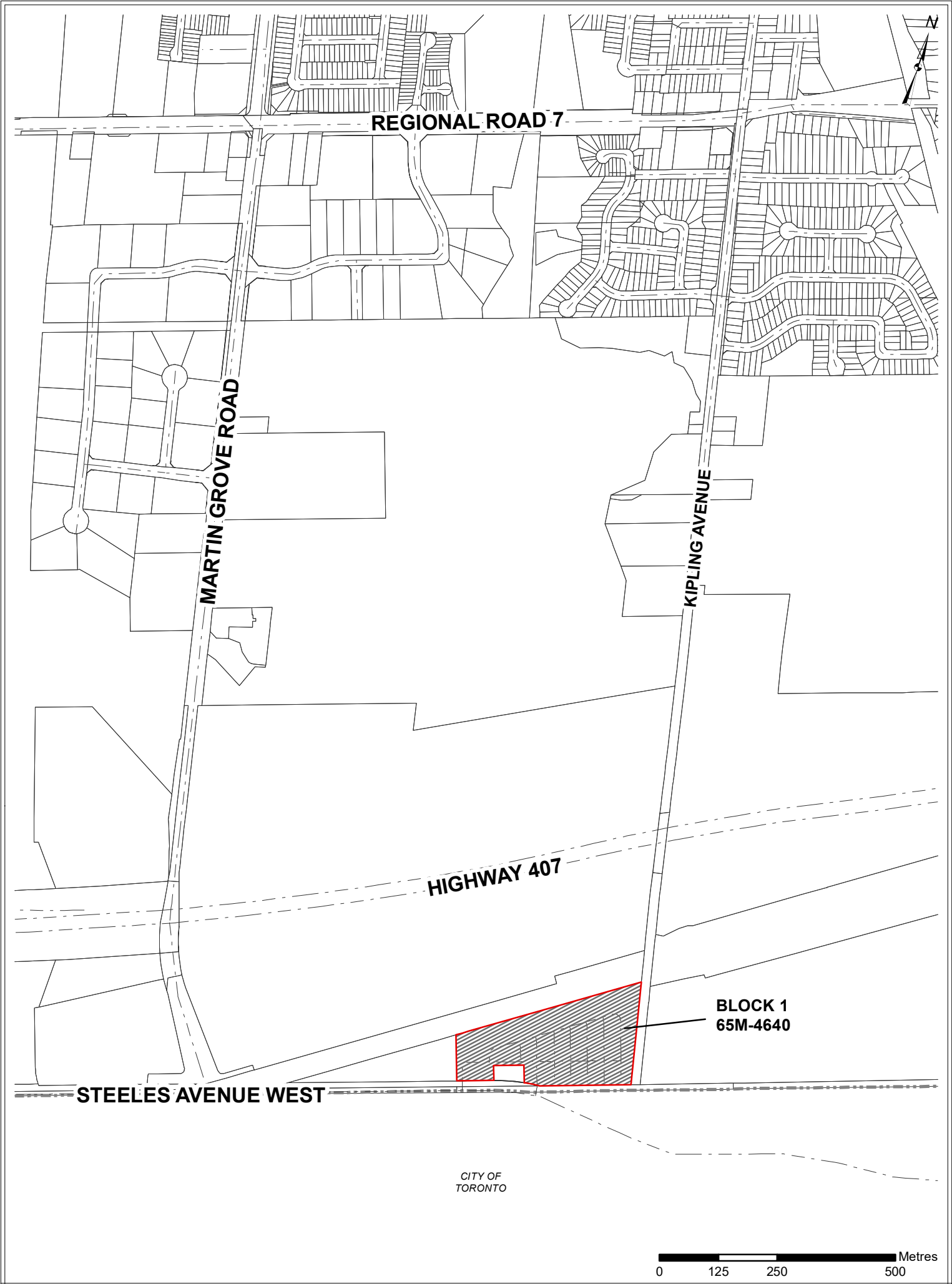
SUMMARY TO BY-LAW 110-2019

The lands subject to this By-law are located on the north side of Steeles Avenue West, east of Martin Grove Road, being Block 1, Plan 65M-4640, City of Vaughan.

On December 13, 2016, Vaughan Council approved Draft Plan of Subdivision File 19T-16V005, which created two blocks. One Block was to include 249 townhouse units and 2, 3-storey buildings containing 26 rental units and ground floor commercial. Block 2 will be conveyed to the City for the purposes of a City park. The Plan of Subdivision was registered on May 24, 2019 as Plan No. 65M-4640.


The purpose of this by-law is to exempt Block 1, of Plan 65M-4640 from the Part Lot Control provisions of the Planning Act for the purposes of facilitating the creation of 249 freehold townhouse units on a common element condominium road, visitor parking spaces, amenity area and for the creation of necessary service easements.

This Part Lot Control By-law shall take effect upon registration.



Location Map To By-Law 110-2019

File: PLC.19.005
Related File : 19T-16V005, DA.16.044
Location: Part of Lot 1, Concession 8
Applicant: Woodbridge Park Limited
City of Vaughan

 **Subject Lands**
Plan 65M-4640