

**A. E. Le Page** limited,

presents:

**seneca heights...**

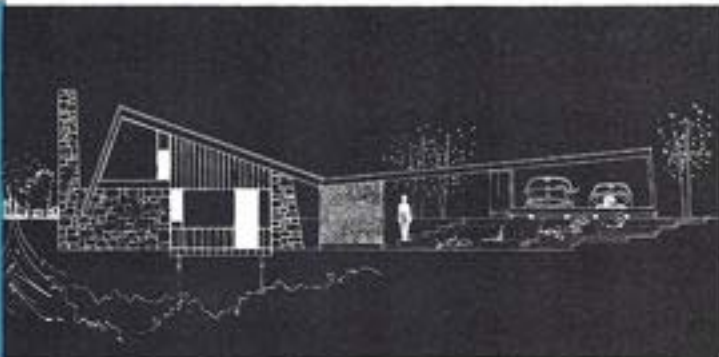
fine

contemporary

homes

of exceptional

distinction



on large

and beautiful

wooded lots

## **seneca heights...**

---

On the site of a fifteenth century Seneca Indian village overlooking the Humber River, this modern community has a planned recreation area complete with park and tennis courts.

Seneca Heights offers large lots nestled on high tableland among majestic first growth oaks and maples. Services including paved roads, water, and street lighting are paid for, and deeded restrictions protect its natural beauty.

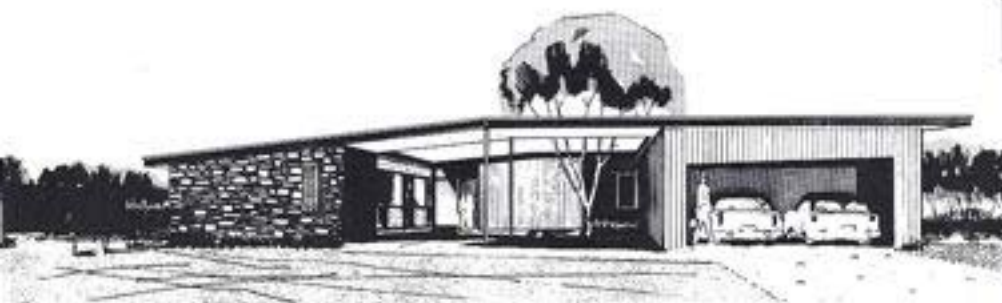
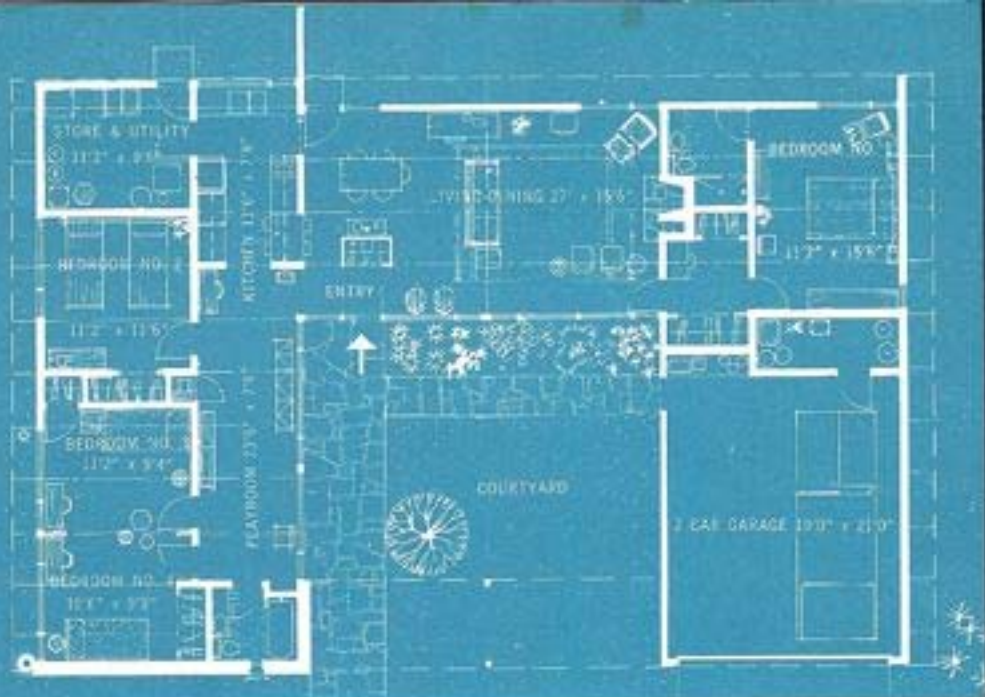
Our expert staff presents a wide variety of beautiful Ranch Homes for sale, and is also prepared to assist the most particular purchaser in the choosing of his plans and lot for that custom-built dream home.

Seneca Heights has been planned and developed by Woodview Development Limited, and these homes have been designed specifically for this community.

**A. E. Le Page** limited, realtors

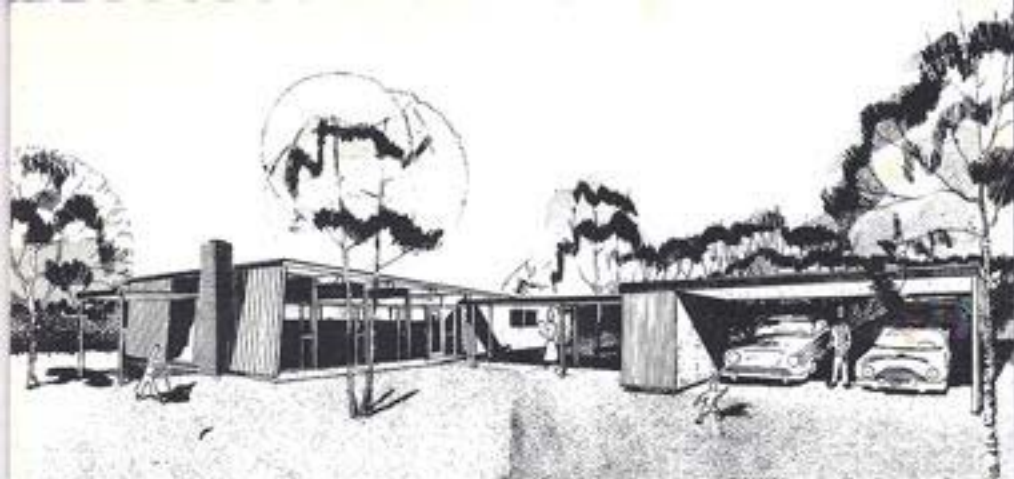
2842 Bloor Street West • Phone: BElmont 3-2111

Woodbridge • ATlas 8-1042



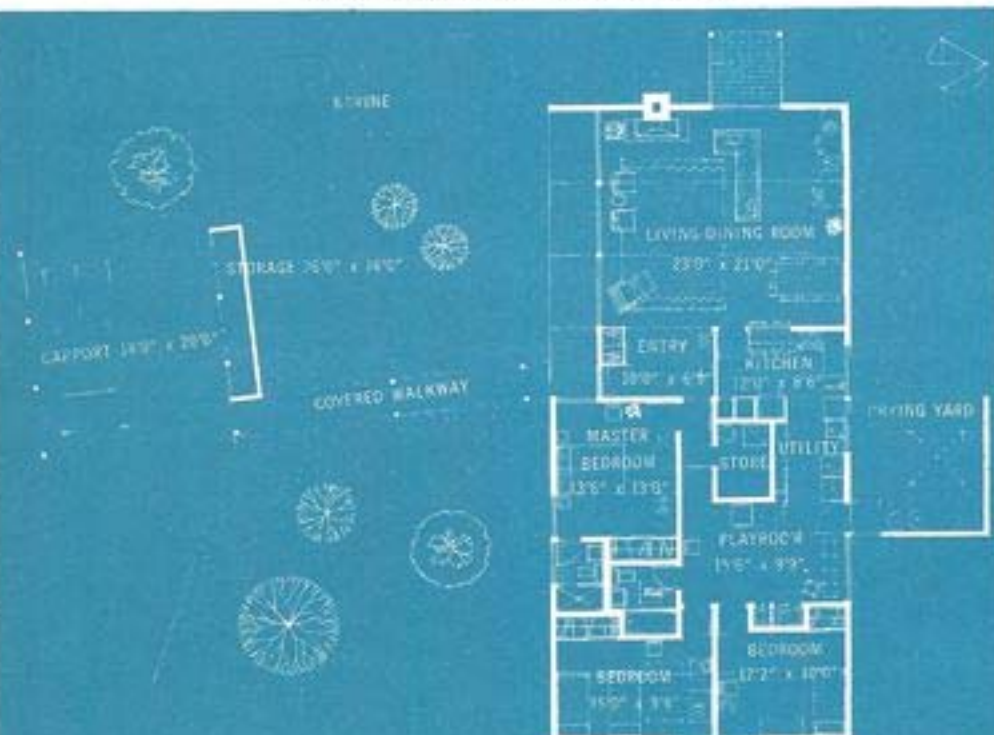
JEROME MARKSON, ARCHITECT

- MODEL M-1** Stone, natural cedar siding, colored panels and glass blend in design in this unusually attractive modern home. Interior ceilings with exposed fir beams follow the gently sloping roofs and the overall design takes maximum advantage of the central outdoor court area.
- Four large bedrooms, one with attendant bath provide zoned living quarters to be effectively used by the individual family to meet their desires. The bright kitchen-utility room overlooks the playroom for ready supervision. Adequate storage space is provided next to the kitchen and playroom.
- Extensive use of glass and roof overhangs in the living-dining room furnishes excellent controlled natural lighting.
- The impressive stone fireplace acts as an attractive central focus.
- Enclosed two-car garage complete with storage space.

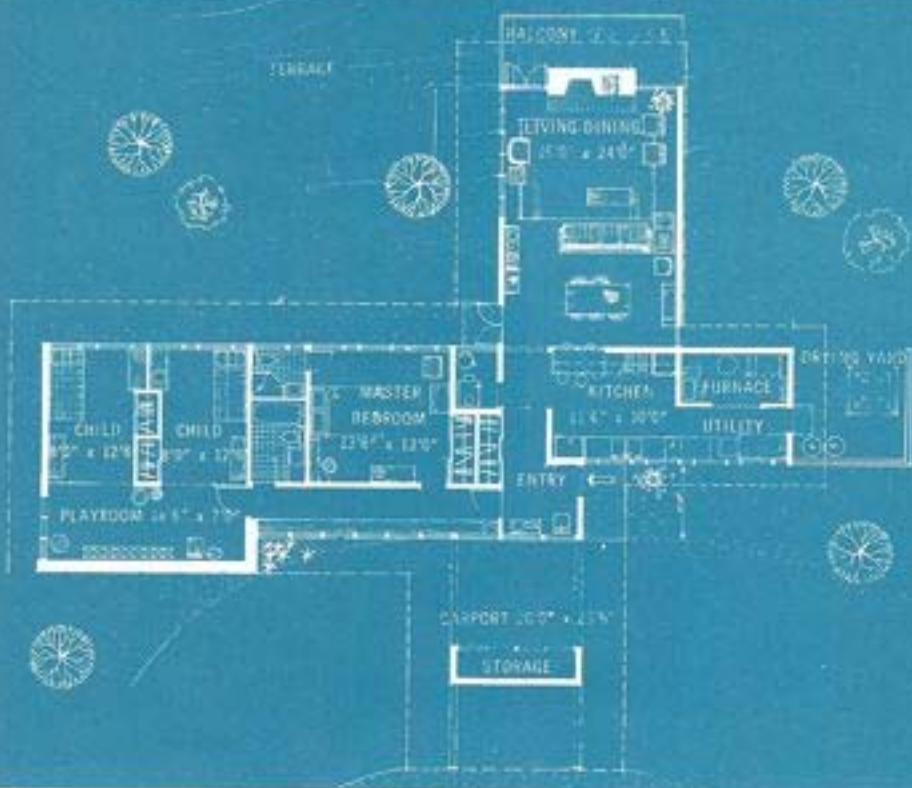


JEROME MARKSON, ARCHITECT

**MODEL M-2** Lightness and plastic form are the bases of this design. Through a western exposure controlled by a trellis sunbreak, the large living-dining room overlooks the Hamber below. To capitalize fully on the magnificent southern view is a large southern window wall. The whole plan is conceived to allow views of the wooded ravines beyond the house and the large side yards adjacent to it. Adjacent to the dining room, front entrance and playroom, the kitchen-utility area acts as the central core of the design. Three bedrooms, one the master complete with private bath, make up the bedroom wing. The covered walkway from the free standing storage wall and two-car carport provide area for an ample patio.







JEROME MARKSON, ARCHITECT

**MODEL M-3** An unusual home of cross-shaped design, with the distinctive entry and cantilevered carport-storage unit at its heart. This home is zoned into three distinct units. The kitchen-utility-storage unit features breakfast bar that doubles as pass-through, and modern built-in oven, elements and chopping block. A spacious hall with built-in cupboards and strip windows along one entire side, leads past the master bedroom suite, two childrens' bedrooms and playroom. The living room, facing west, overlooks the majestic river view and also has provision for controlled southern sunlight. A magnificent stone fireplace dominates the space, and a delightful balcony is cantilevered over the ravine into the trees.



TORONTO TWP.



A. V. ROE

HIGHWAY #27

ETOBICOKE

WOODBIDGE



VAUGHAN TWP.

C.P.R. MAIN LINE

HIGHWAY #400



WESTON

HIGHWAY #7

VAUGHAN TWP.

HIGHWAY #401

LIMIT OF METROPOLITAN TORONTO

SPADINA AVE. EXTENSION  
(PROPOSED)

NORTH YORK



MILES

YORK TWP.



FOREST HILL

TORONTO

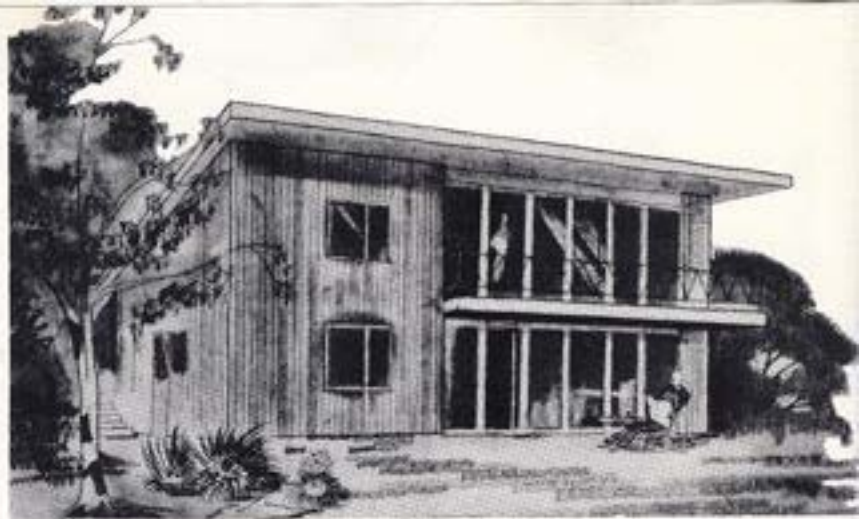
HIGHWAY #11

NORTH YORK



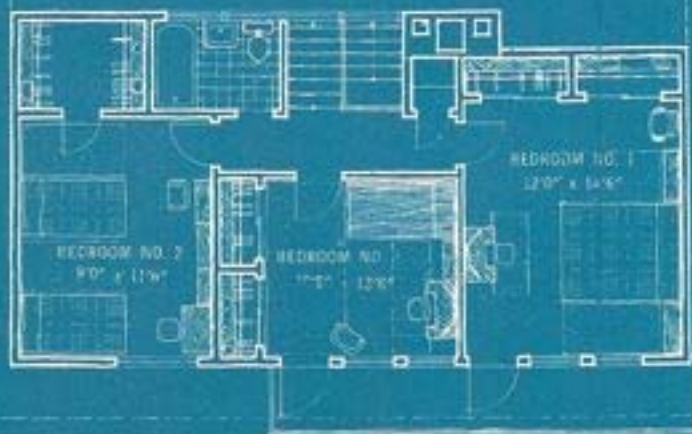
LEASIDE





MICHAEL BACH, ARCHITECT

UPPER FLOOR



CARPORT

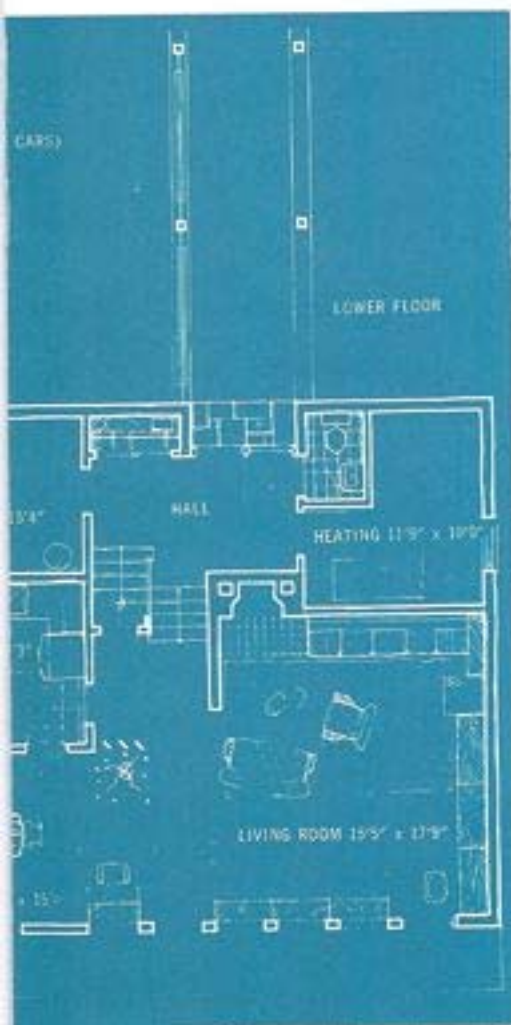
LAUNDRY 9'3" x 11'6"

KITCHEN 9'0" x 11'6"

DINING ROOM 9'0" x 11'6"

**MODEL B-1** A truly modern split level design with unusual features of great attraction.

The spacious roofed walkway leads across the rear of the two-car carport past the wide area patio into the impressive central hall. Also on this level are utility and laundry rooms. From here, five steps down take you to the central living area . . . large kitchen and huge living-dining room with massive fireplace. Five steps up from the entrance hall is the sleeping area, bath and a storage room. From two of the bedrooms are entrances onto the flying open balcony that overlooks a view of grandeur and beauty.





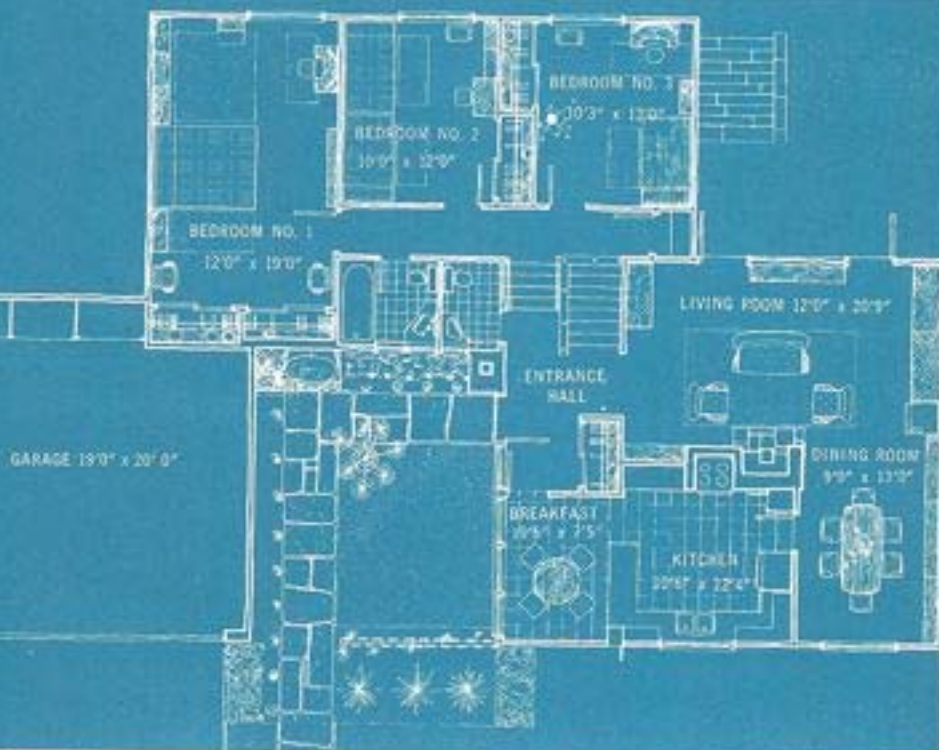
**MODEL B-2** Here again is modern functional design coupled with exceptional beauty of line.

The large enclosed two-car garage with its 18' steel door flanks the entrance walkway. Inside, the modern kitchen faces the front of the home, and features built-in electric range and large breakfast nook.

The extensive L-shaped living-dining area is beautifully centered by the stone fireplace.

Three large bedrooms, all located at the back of the house, are well separated from the living quarters.

Dowstairs, a completely finished recreation room along with laundry and storage rooms, make effective use of all available space.



**MICHAEL BACH, ARCHITECT**



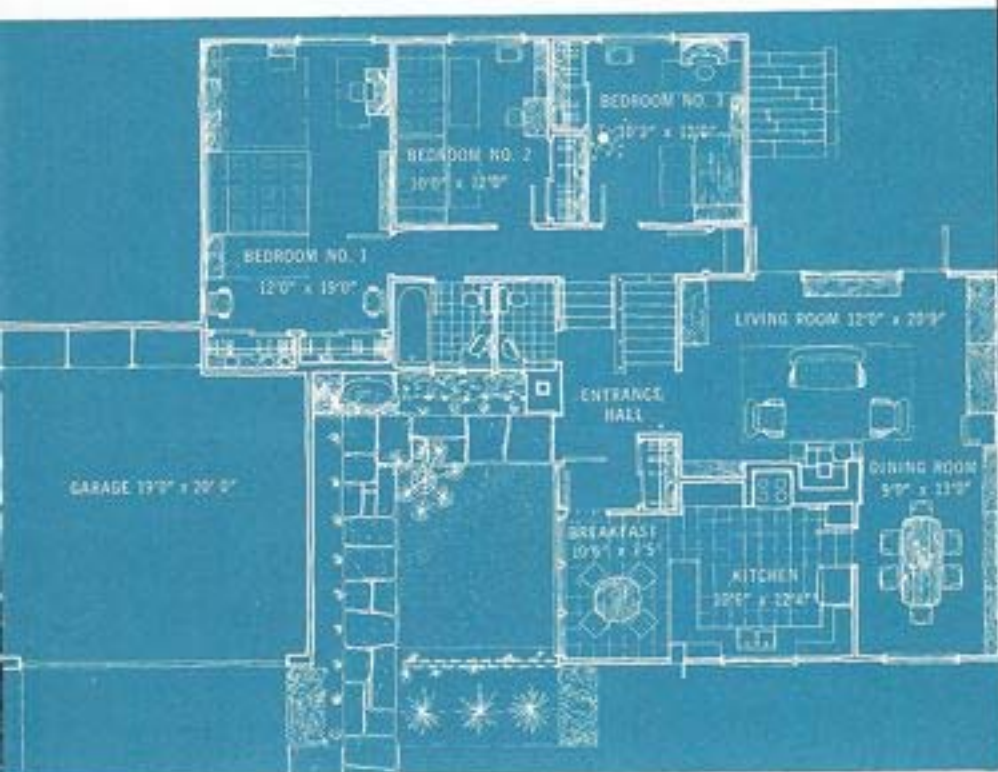
**MODEL B-2** Here again is modern functional design coupled with exceptional beauty of line.

The large enclosed two-car garage with its 18' steel door flanks the entrance walkway. Inside, the modern kitchen faces the front of the home, and features built-in electric range and large breakfast nook.

The extensive L-shaped living-dining area is beautifully centered by the stone fireplace.

Three large bedrooms, all located at the back of the house, are well separated from the living quarters.

Downstairs, a completely finished recreation room along with laundry and storage rooms, make effective use of all available space.



**MICHAEL BACH, ARCHITECT**

