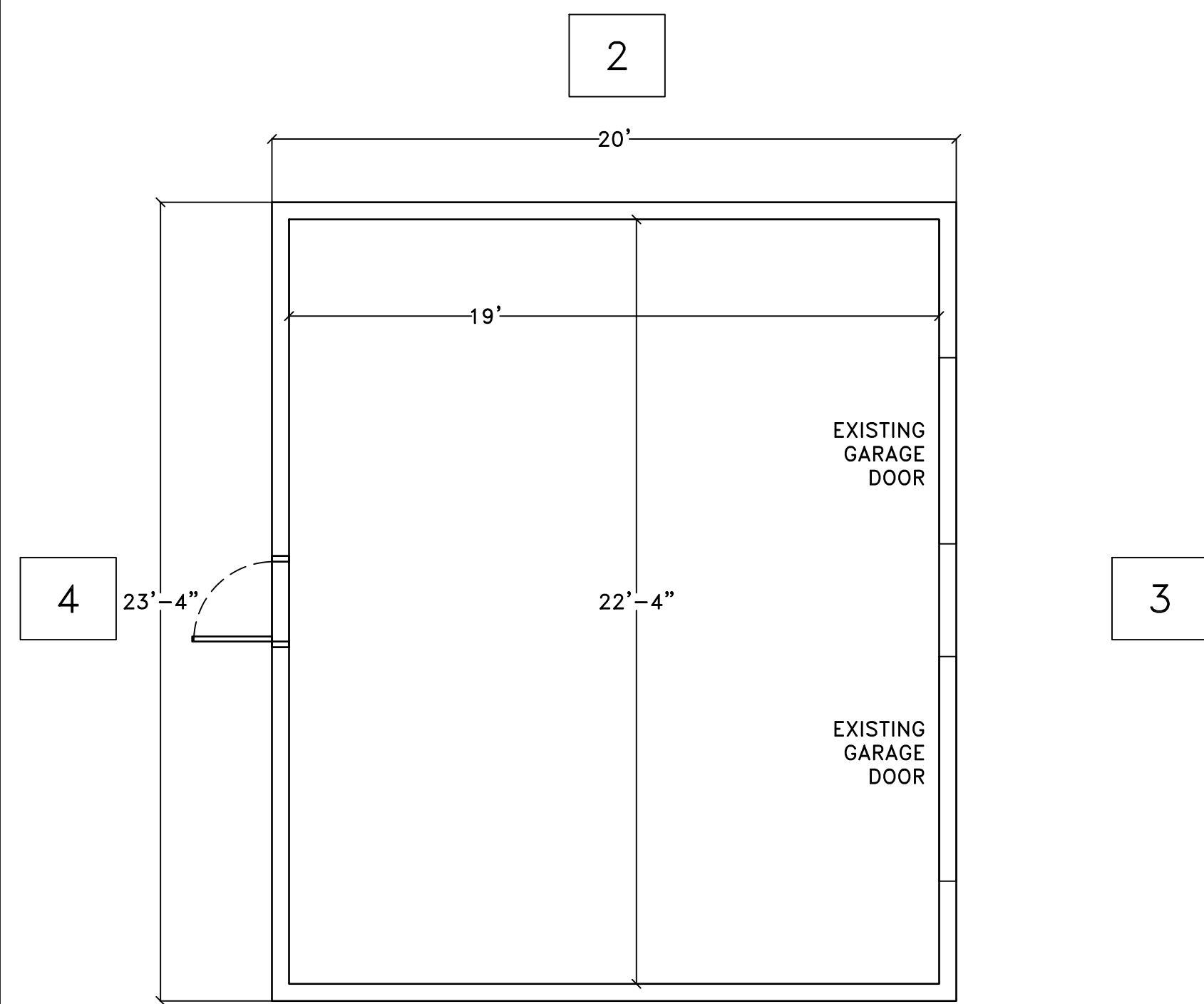
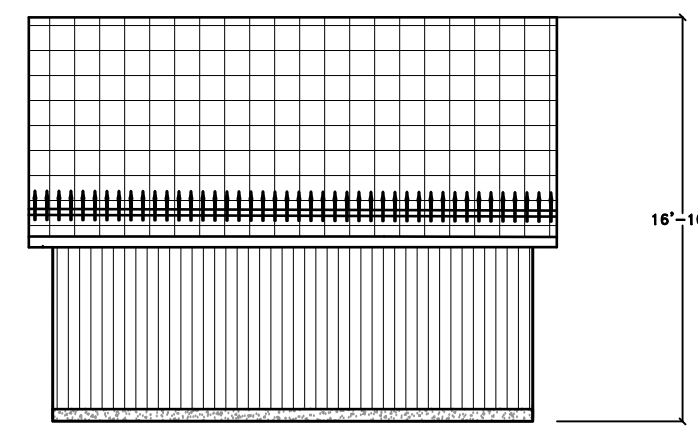


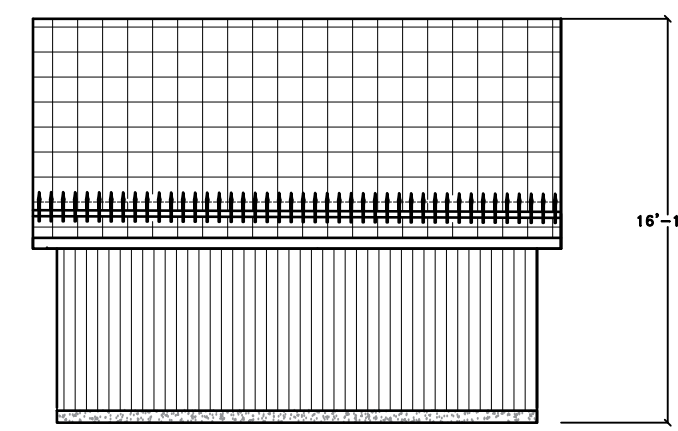
**EXISTING**



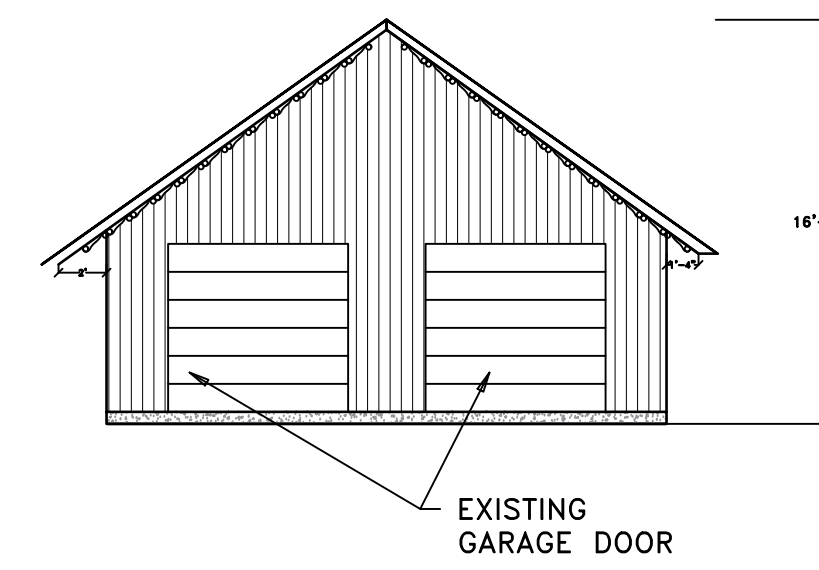
1 Looking North



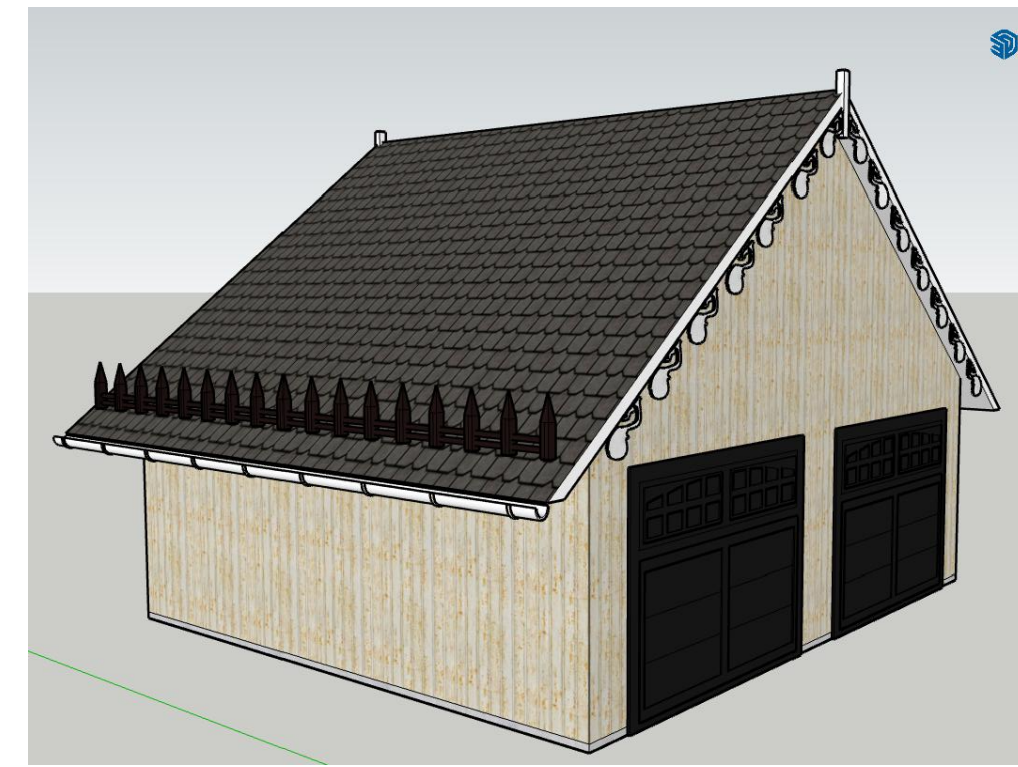
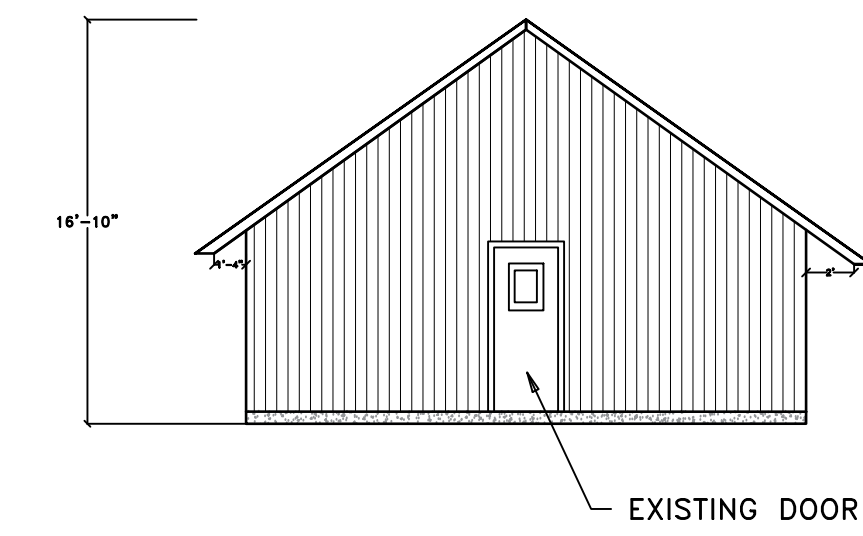
2 Looking South



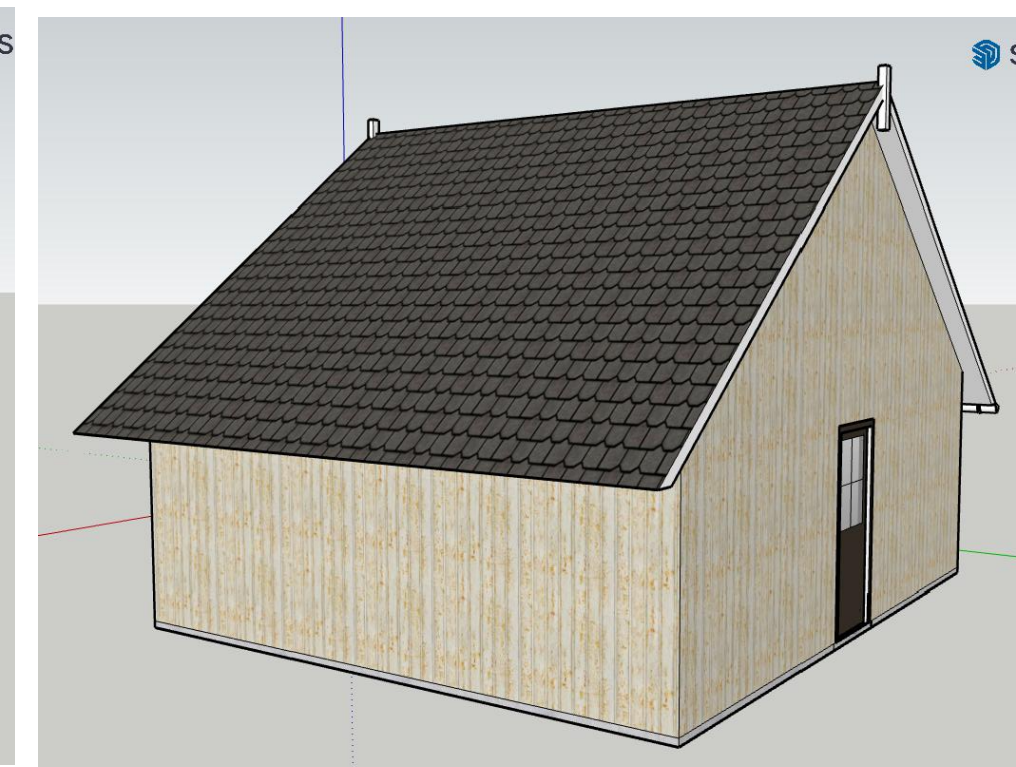
3 Looking West



4 Looking East



Looking North West



Looking South East

1

**EXISTING  
EXTERIOR COLOUR  
COMBINATION**

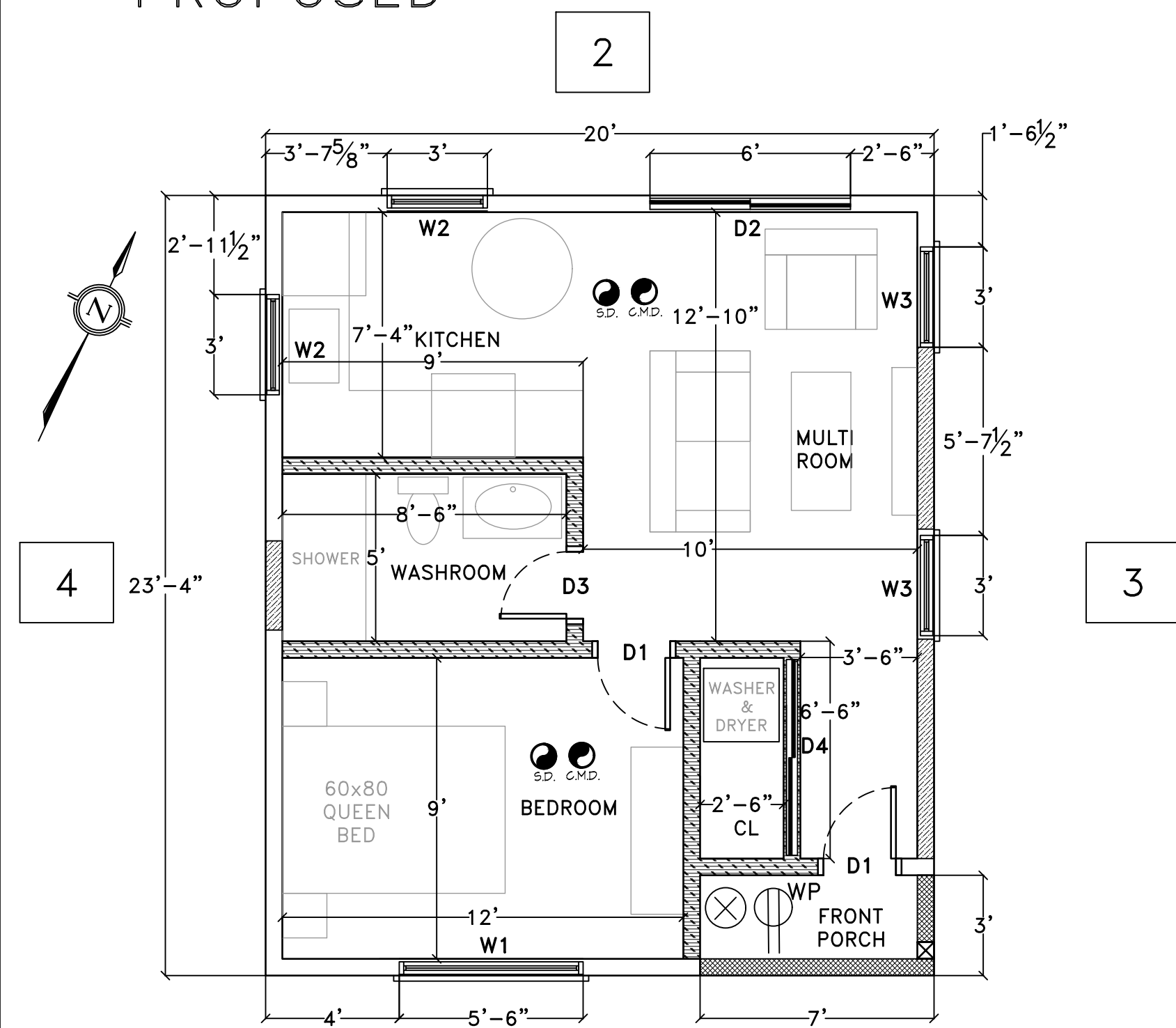
COLOUR CODES REFER TO  
BENJAMIN MOORE PAINTS

BOARD AND BATTEN MYSTIC BEIGE 2162-60

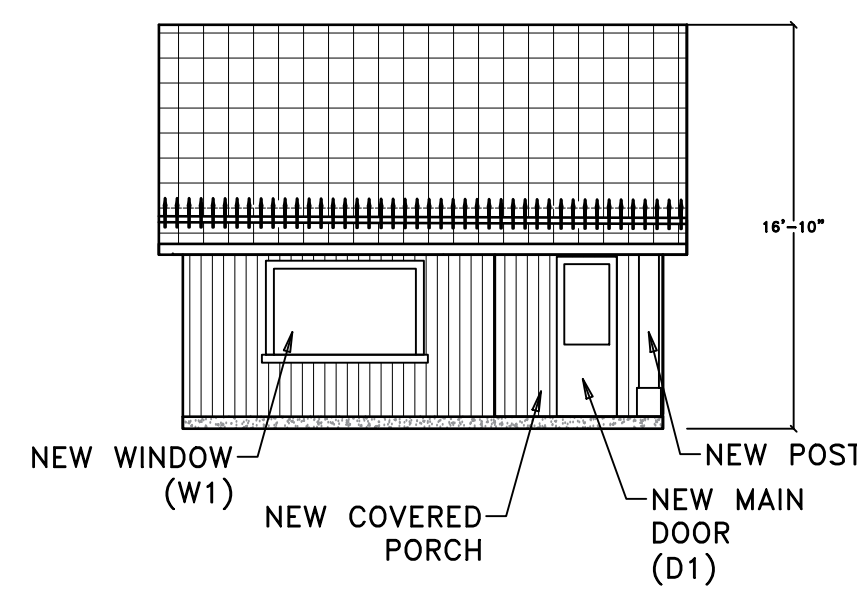
EYES, FASCIA, GUTTER, SIMPLE WHITE 2143-70

EX. ENTRY DOOR EBONY SLATE 2118-30  
GARAGE DOORS

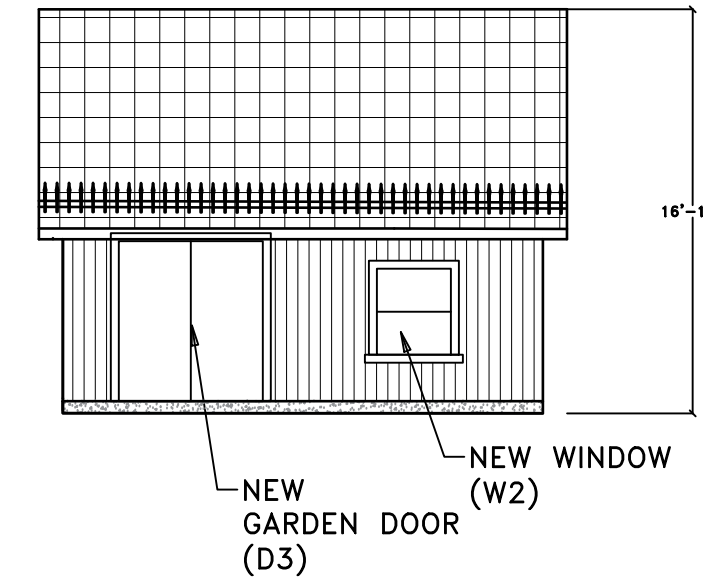
**PROPOSED**



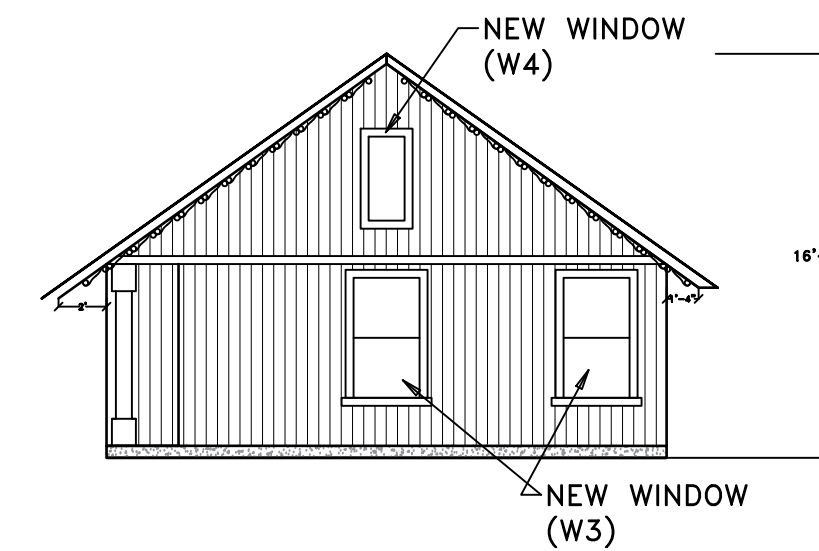
1 Looking North



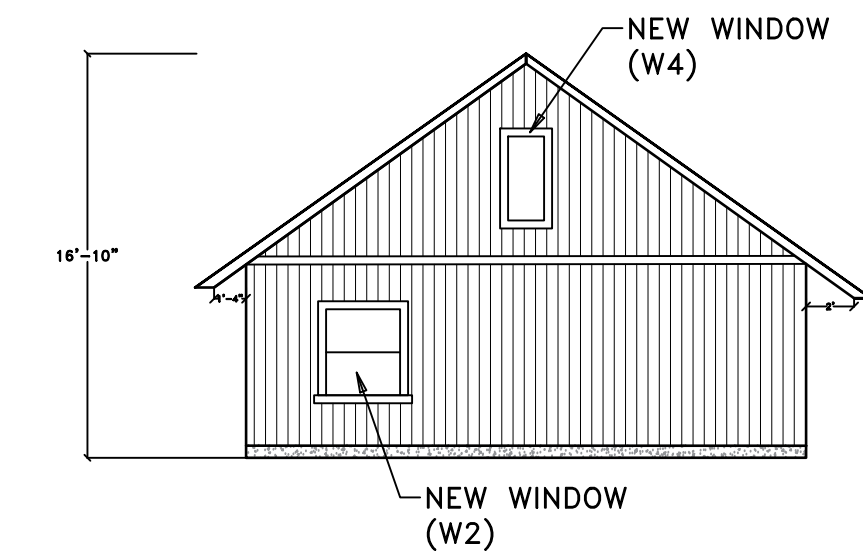
2 Looking South



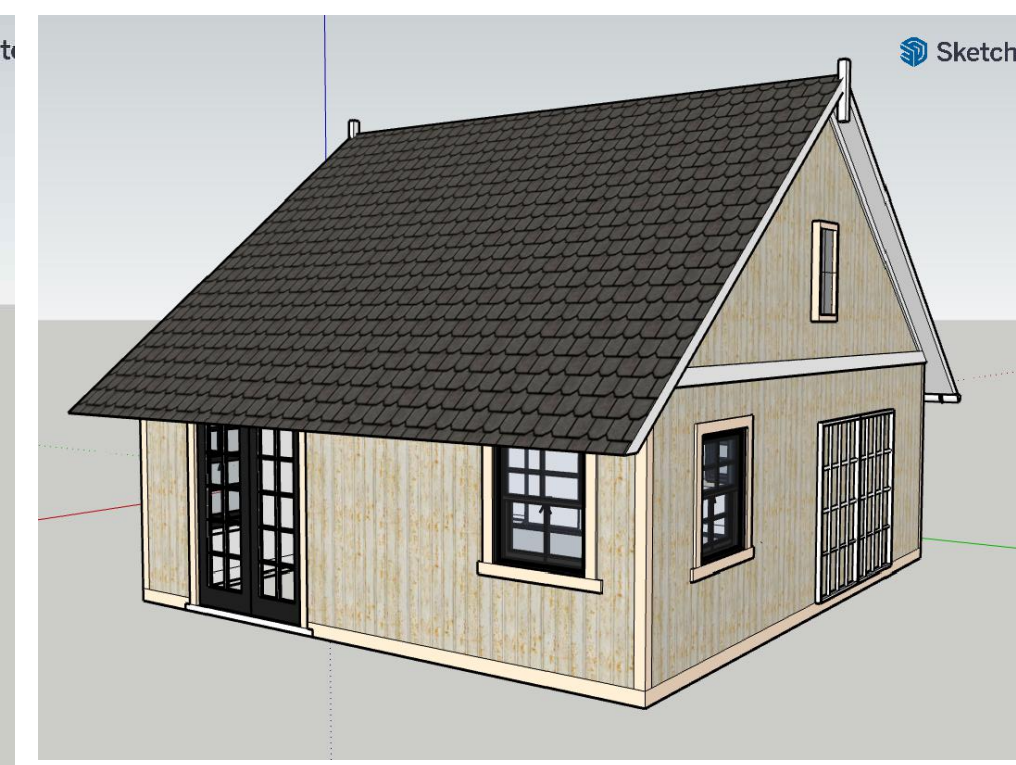
3 Looking West



4 Looking East



Looking North West



Looking South East

1

**PROPOSED  
EXTERIOR COLOUR  
COMBINATION**

COLOUR CODES REFER TO  
BENJAMIN MOORE PAINTS

BOARD AND BATTEN MYSTIC BEIGE 2162-60  
WINDOW & DOOR CASINGS, CORNER FEATURES AND BASE SKIRT

**LEGEND**

- Existing Exterior Walls
- Existing Opening to be Closed
- Proposed Interior Walls
- Existing Exterior Wall to be Removed
- Proposed Windows

**DOORS AND WINDOWS**

D1	30"x80"	W1	67"x47"
D2	72"x80"	W2	36"x32"
D3	28"x80"	W3	33"x60"
D4	72"x80"	W4	24"x48"

EYES, FASCIA, GUTTER, HORIZONTAL BAND, ROSE TRELLIS, AND CORNER POST SIMPLE WHITE 2143-70

FRONT DOOR, SLIDING DOOR, AND WINDOWS EBONY SLATE 2118-30

**PROPOSED MODIFICATION TO  
EXISTING AUXILIARY STRUCTURE FOR  
CONVERSION TO GARDEN SUITE**

376 STEGMAN'S MILL ROAD  
KLEINBURG - CITY OF VAUGHAN

**COMPARISON PLAN**

DATE: 2024-03-27 SCALE: N.T.S. DWG. No. PR-1