

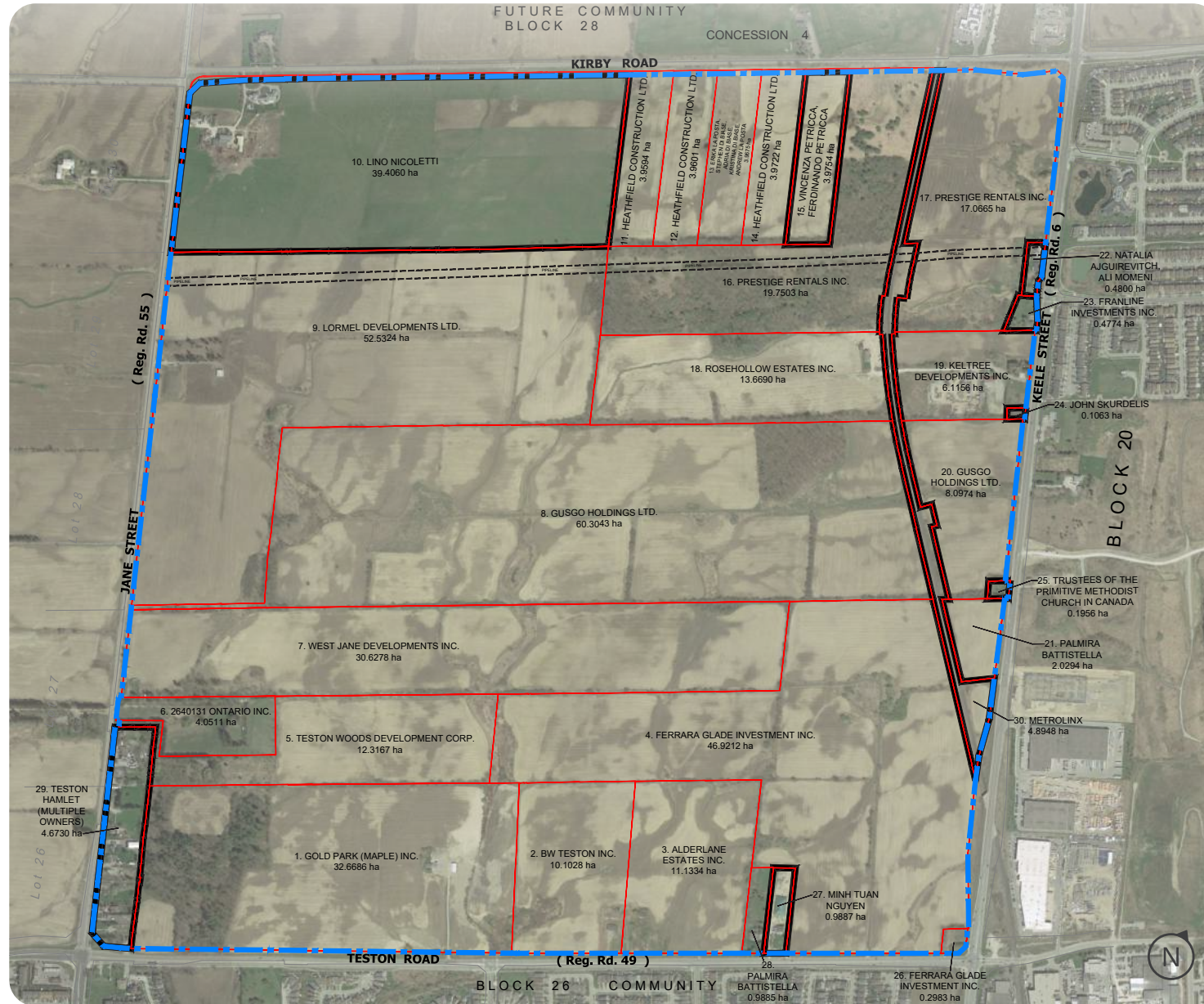
C11.
Communication
CW(PM) – May 7, 2024
Item No. 2



Public Meeting Block 27

Committee of the Whole
May 7, 2024, 7:00PM
Item #4.2 - File BL.27.2020

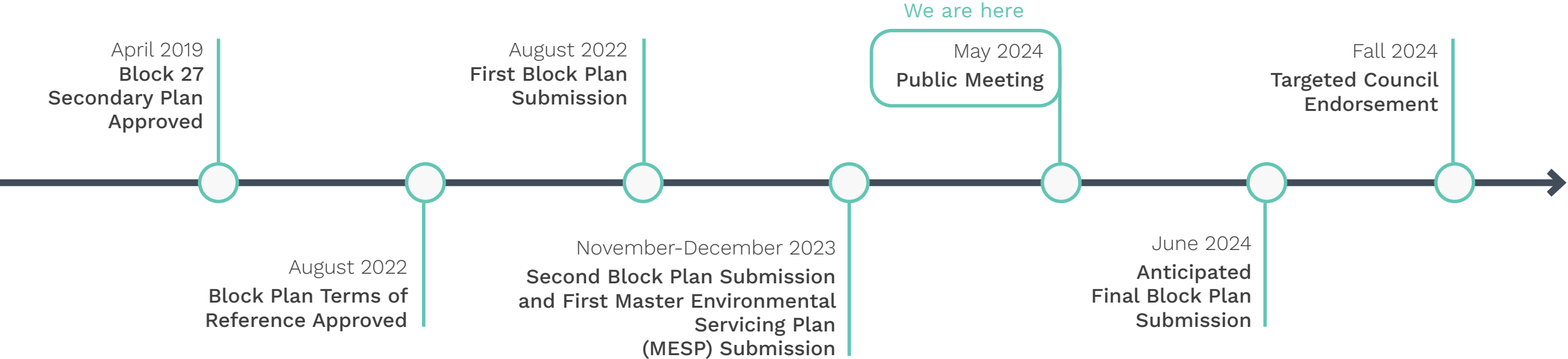
Block 27 Landowners Group



LEGEND

- - - BLOCK 27 BOUNDARY
- PROPERTY BOUNDARIES
- - - NON-PARTICIPATING OWNERS

Project Timeline



Public Meeting Purpose

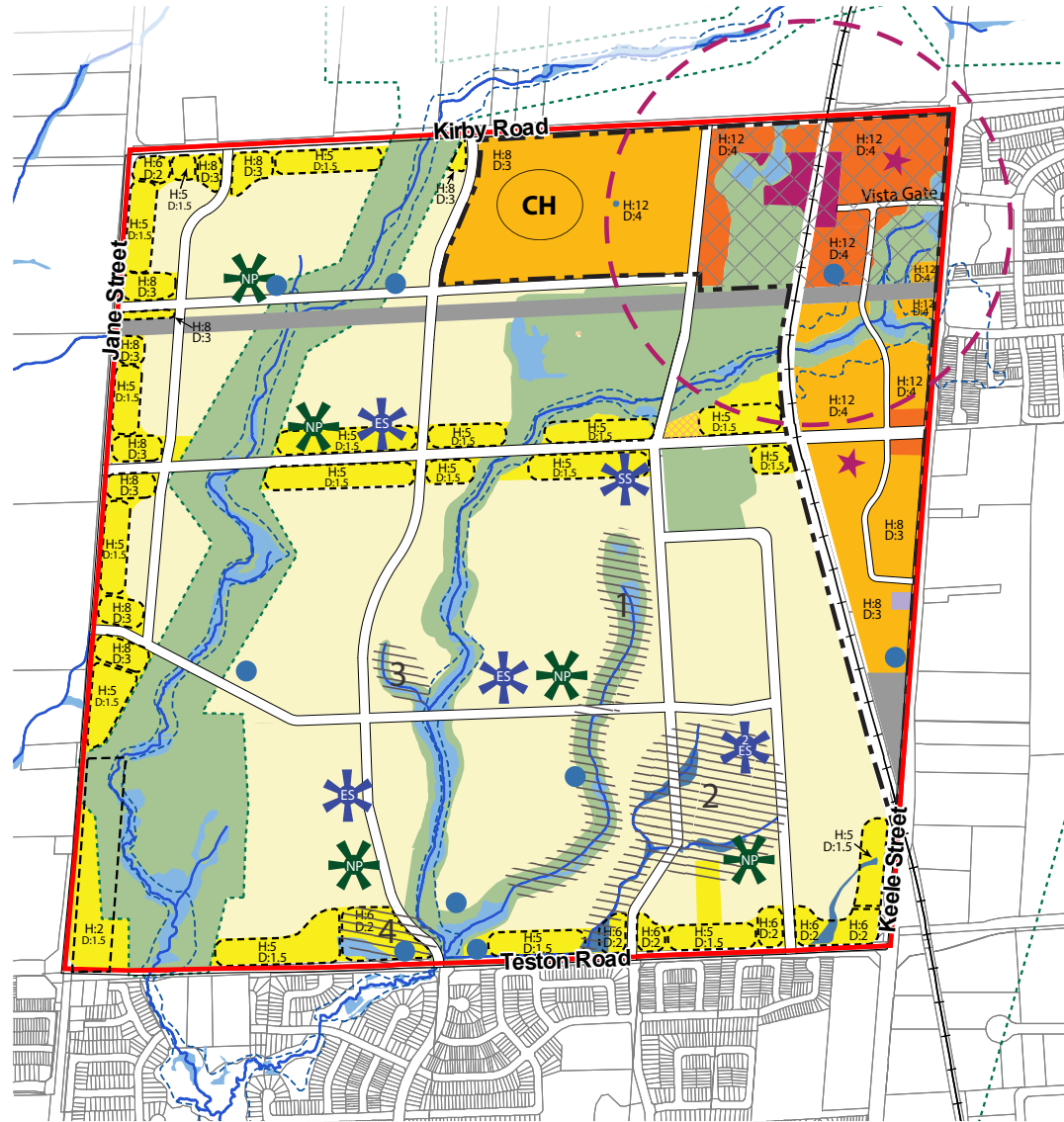


To provide a summary of the proposed Block Plan Application



To receive public input and feedback on the proposed Block Plan to help guide the next steps and development of Block 27

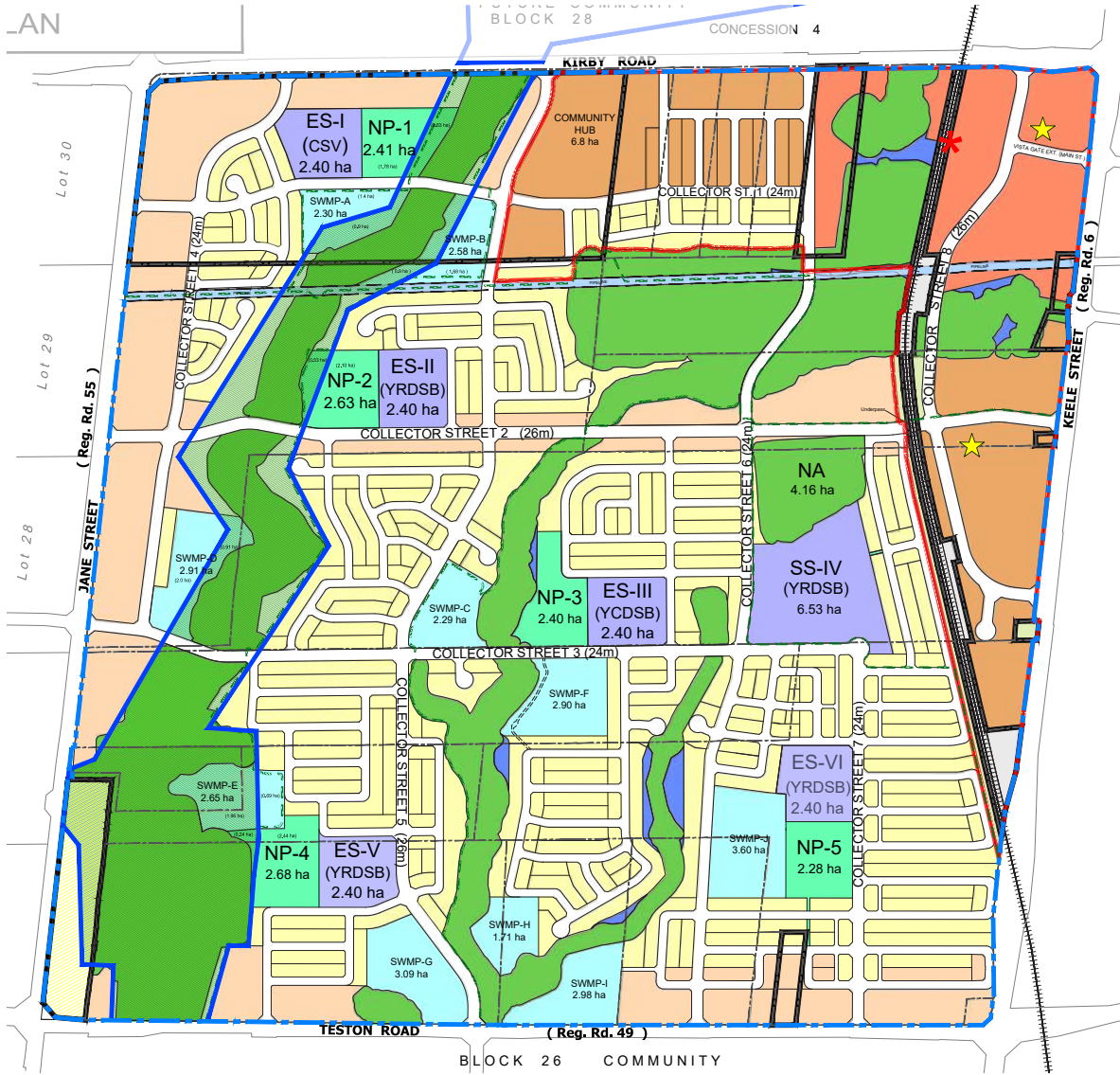
Secondary Plan



Legend

- Secondary Plan Area
- Kirby GO - Transit Hub Centre
- 500m Radius
- Transit Hub Special Study Area
- Potential Enhancement Areas
- Hamlet of Teston
- Low-Rise Residential
- Low-Rise Mixed-Use
- Mid-Rise Residential
- Mid-Rise Mixed-Use
- CH Community Hub
- Transit Hub
- ✱ Neighbourhood Park
- ✱ Public Square
- ✱ Elementary School
- ✱ Secondary School
- Private Open Space
- Infrastructure and Utilities
- Potential SWM Facility
- Natural Areas
- Natural Areas - Provincially Significant Wetlands
- Natural Areas - Evaluated Wetlands
- Greenbelt Plan Area
- Railway Line
- Stream
- Engineered Floodline
- Natural Areas Special Study Areas
- H Maximum Height
- D Maximum Density

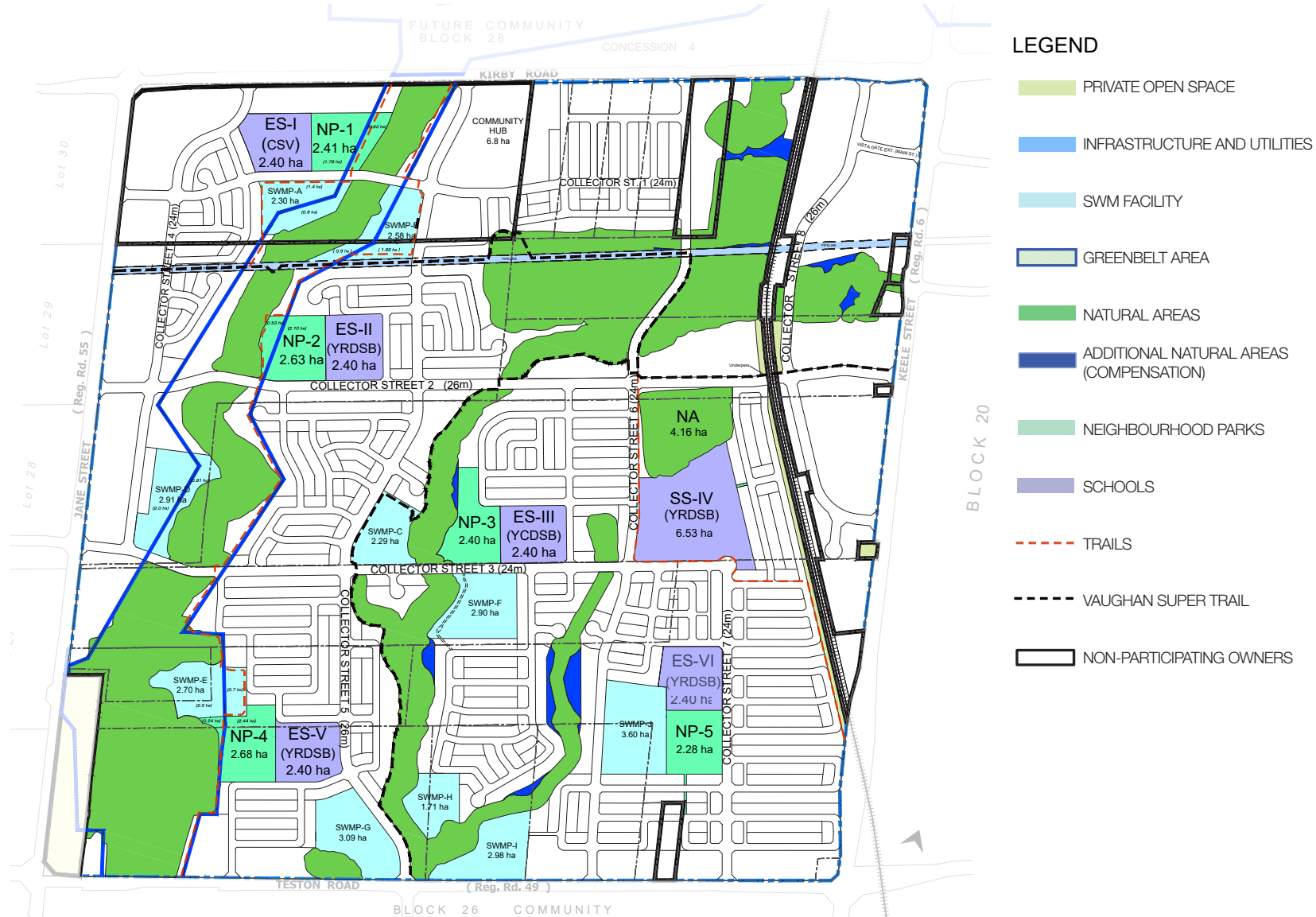
Block Plan



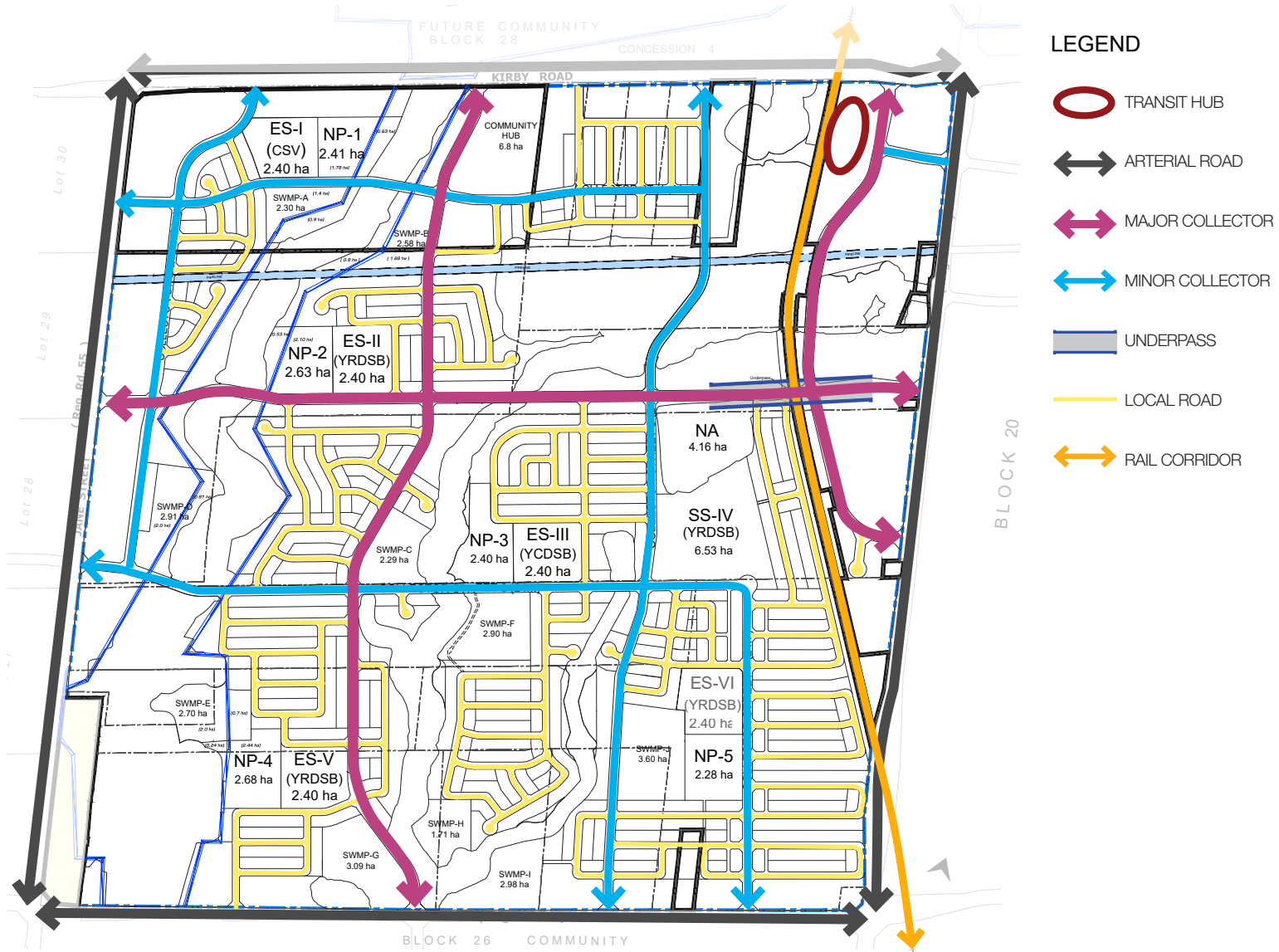
LEGEND

- Low-Rise Residential
- Low-Rise Mixed-Use
- Mid-Rise Residential
- Mid-Rise Mixed-Use
- Private Open Space
- Natural Areas (Including Buffers)
- Infrastructure and Utilities
- Additional Natural Areas (Compensation)
- SWM Facility
- Greenbelt Area
- Neighbourhood Parks
- Schools
- Hamlet of Teston
- Block Plan Boundary
- Property Lines
- Trails
- Non-Participating Owners
- Kirby GO - Transit Hub Centre
- * Transit Hub
- ★ Public Squares

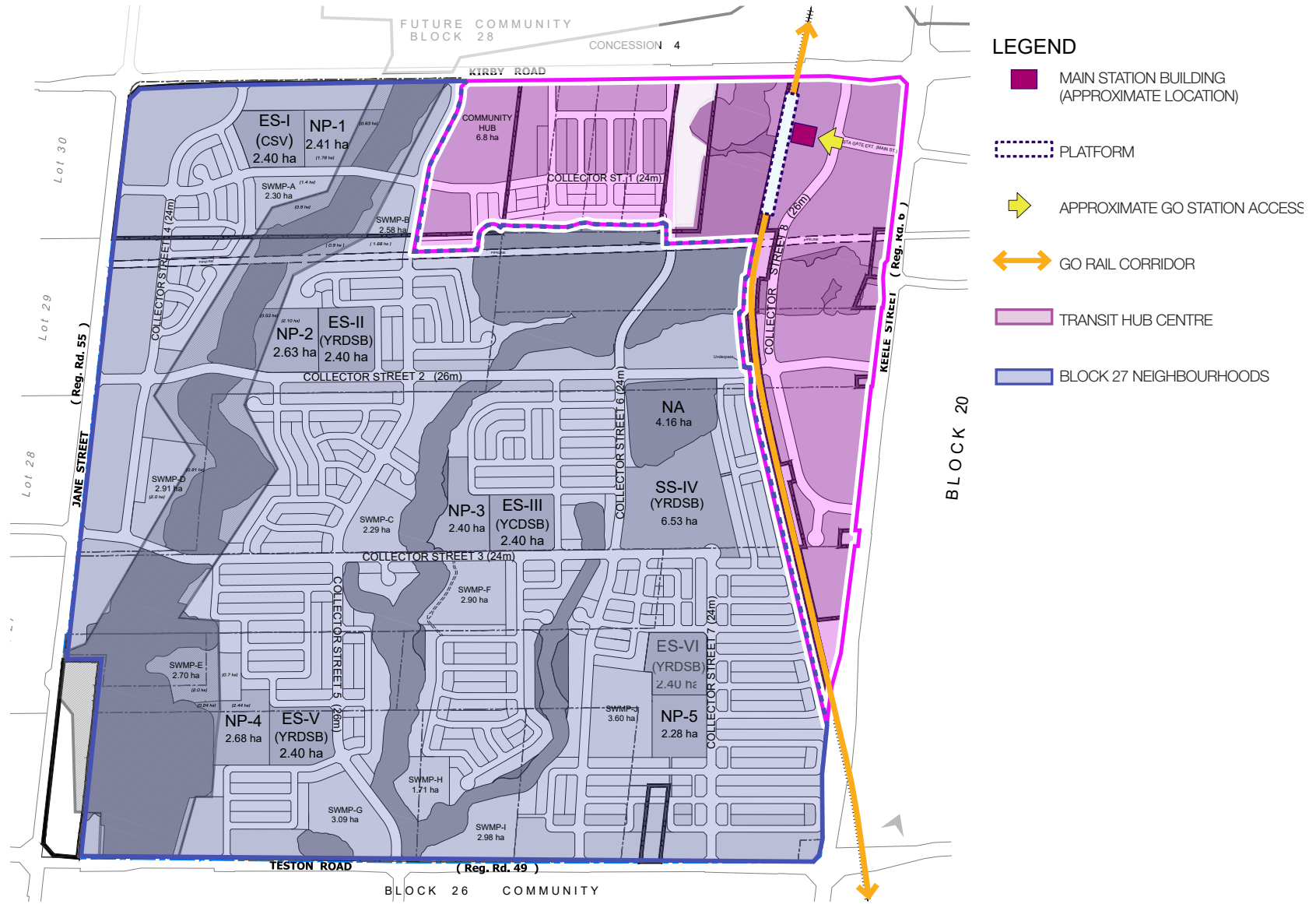
Open Space Network, Parks and Schools



Street Network



Character Areas





Questions?

Thank you