

A detailed architectural rendering of a modern multi-story residential building, likely a townhouse or apartment complex. The building features a mix of light-colored stone or brickwork on the lower levels and dark grey or black siding on the upper levels. Large windows are prominent, and some units have balconies with metal railings. The building is set on a street with a sidewalk, and there are trees with autumn-colored foliage in the background. The sky is blue with a few white clouds.

# Minor Variance Application 150 Honeycrisp Crescent

**Mobilio Residences Inc.**

June 1, 2023

FILE NO. A062/23



# SITE LOCATION



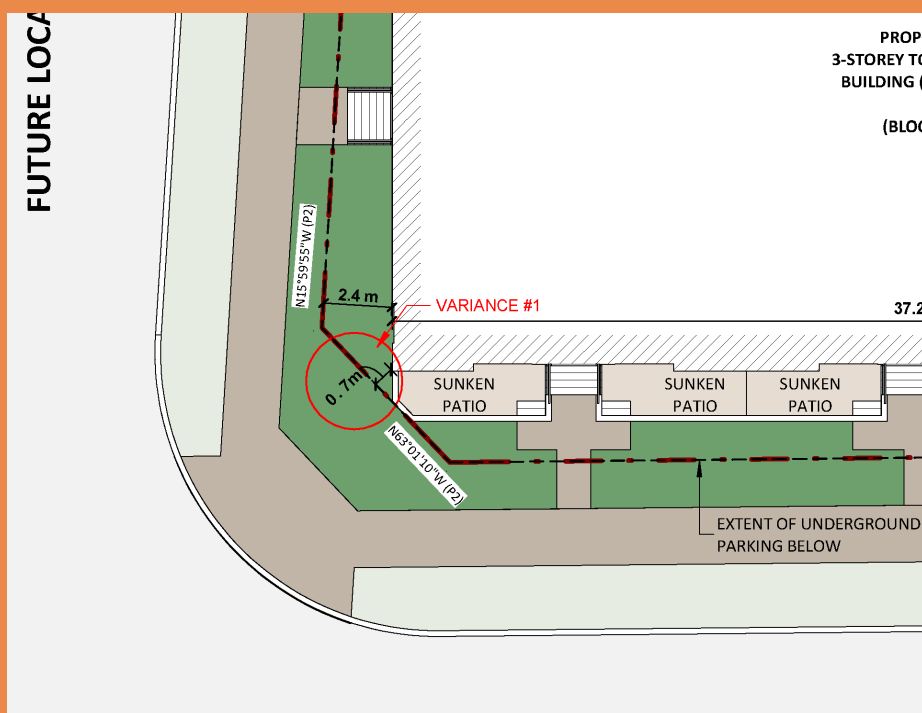


# SUBJECT SITE

## BLOCK 17



# Requested Variance



## Current Zoning

*Multiple Residential Zone (RM2)*

Subject to site-specific provisions through By-law 052-2019 and By-law 053-2019

## Request

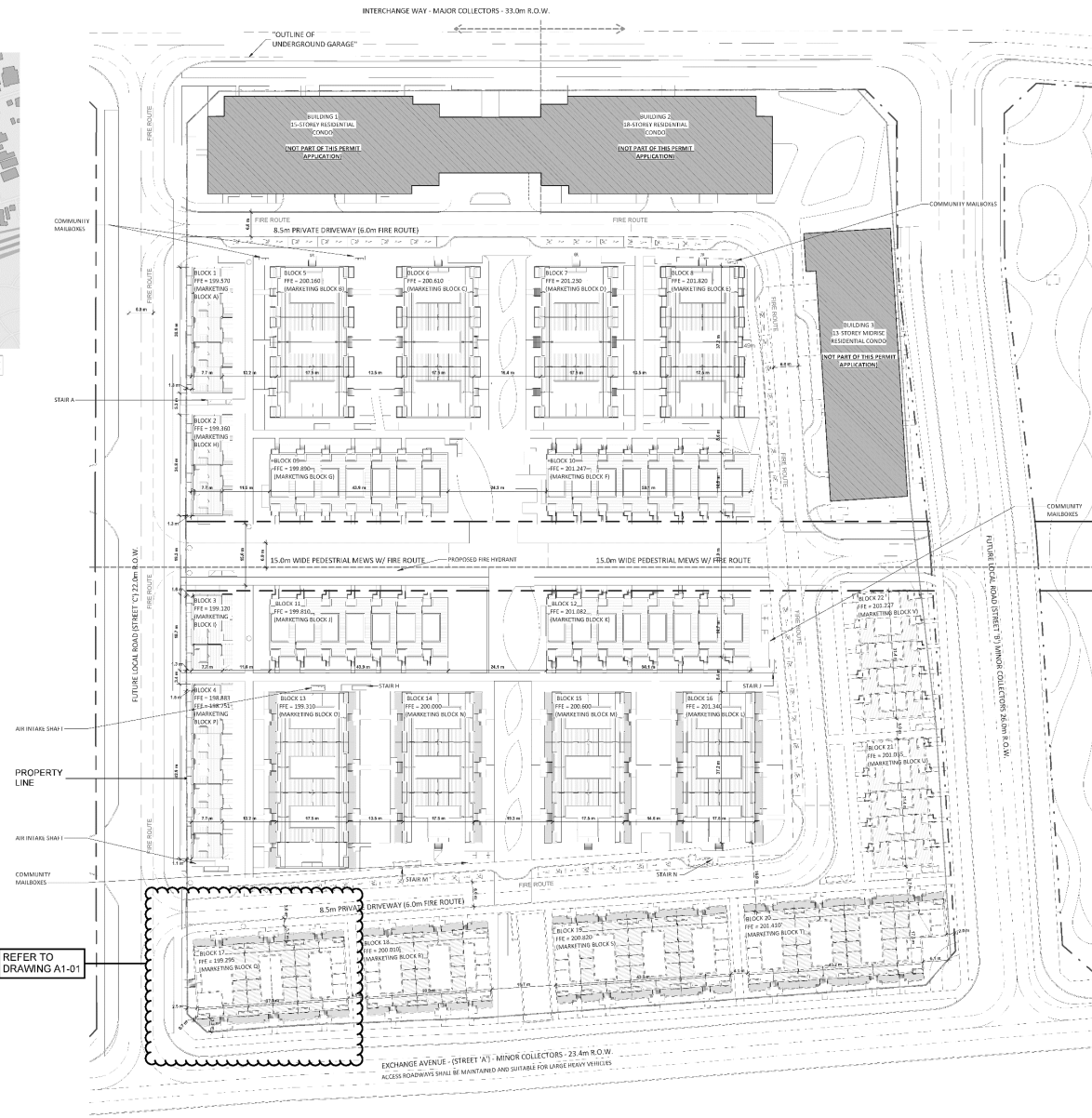
Decrease the minimum setback required from the southwest daylight triangle immediately adjacent to Townhouse Block 17 from 1.0 metres to 0.7 metres.



# General Site Plan



SUBJECT SITE



# Thank you

## Contact

**STEPHEN ALBANESE**

**Associate Principal**

[stephen.albanese@arcadis.com](mailto:stephen.albanese@arcadis.com)

**Arcadis.** Improving quality of life.