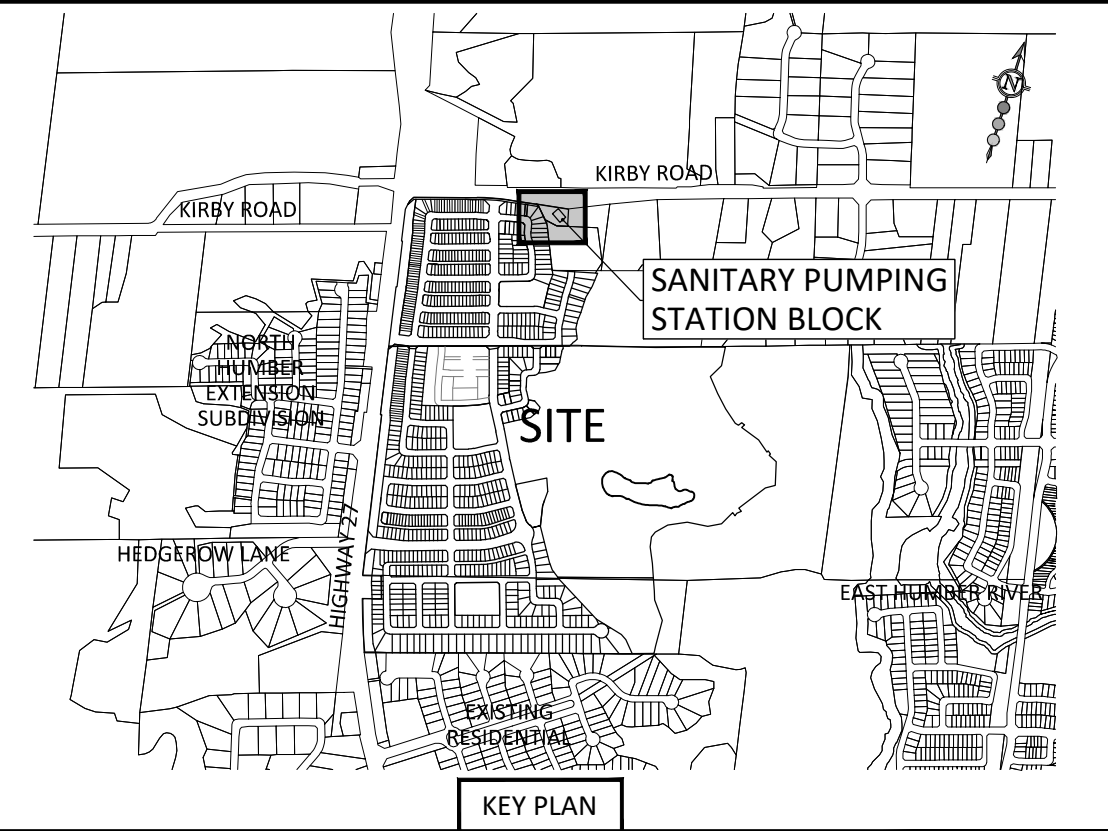
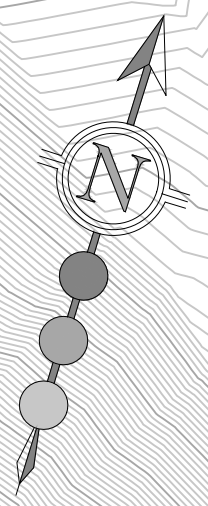


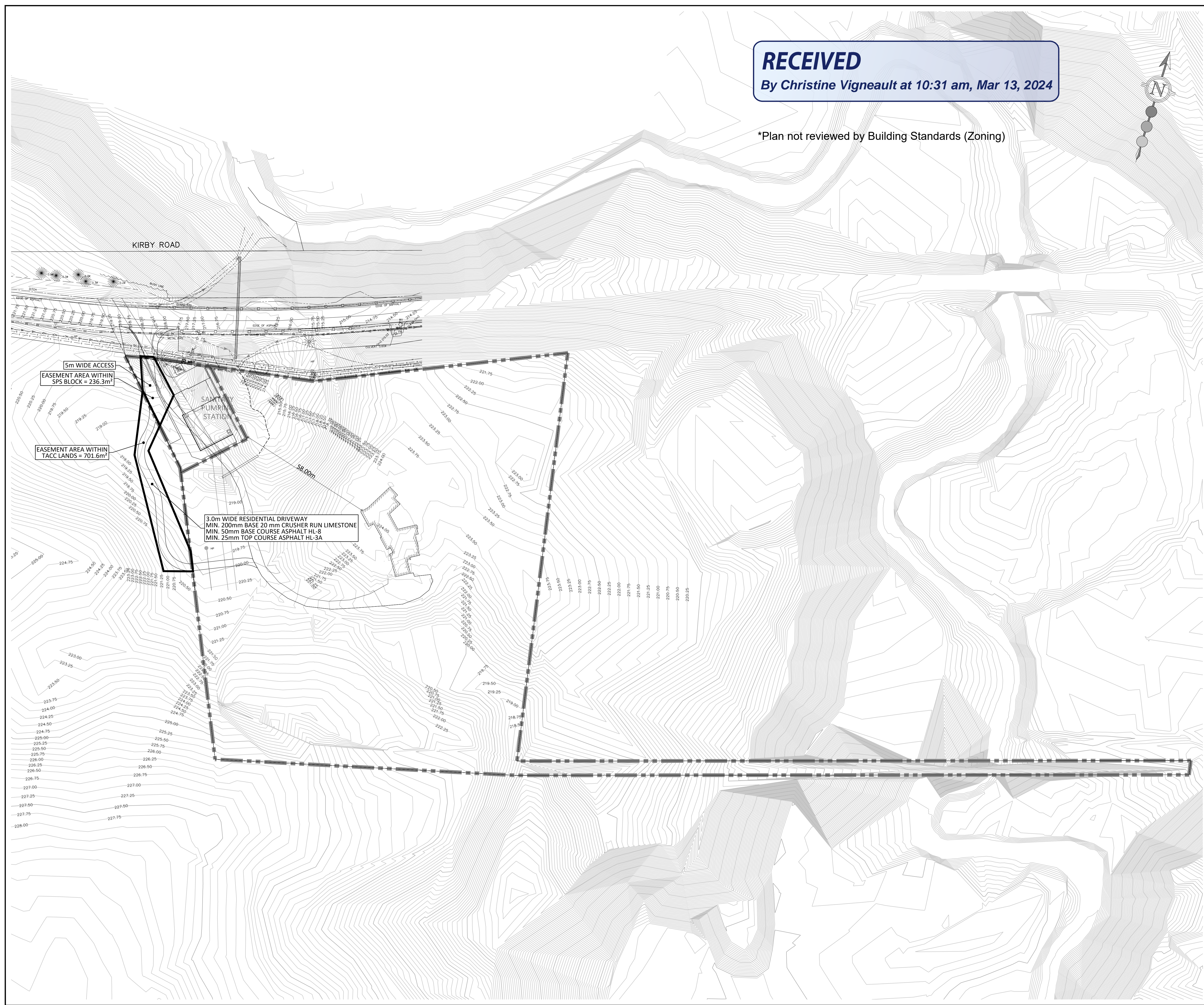
RECEIVED
 By Christine Vigneault at 10:31 am, Mar 13, 2024

*Plan not reviewed by Building Standards (Zoning)



LEGEND:

- LIMIT OF VITARRO PROPERTY
- LIMIT OF SANITARY PUMPING STATION BLOCK
- - - - - EXISTING CONTOUR AND ELEVATION
- RESIDENTIAL DRIVEWAY EASEMENT AREA



No.	DESCRIPTION	BY	DATE

UPDATES & REVISIONS

<p>CONSULTING ENGINEER:</p> <p>30 CENTURIAN DRIVE, SUITE 100 MARKHAM, ONTARIO L3R 8B8 TEL: (905) 475-1900 FAX: (905) 475-8335</p>	<p>PROPOSER:</p> <p>KIRBY 27 DEVELOPMENTS 600 APPLEWOOD CRESCENT VAUGHAN, ONTARIO L4K 4B4 TEL: (905) 760-7300</p>
<p>ENGINEER'S STAMP:</p>	<p>APPROVED AS TO FORM IN RELIANCE, UPON THE PROFESSIONAL SKILL AND ABILITY OF THE CONSULTING ENGINEERS AS TO DESIGN AND SPECIFICATIONS.</p> <p>_____ DIRECTOR OF DEVELOPMENT/ TRANSPORTATION ENGINEERING</p> <p>DATE</p>

KIRBY SANITARY PUMPING STATION

DRIVEWAY EASEMENT PLAN



DESIGNED BY: N.D.M.	DATE: MARCH 2024	CHECKED BY: L.C.M.
DRAWN BY: S.T.	PROJ. No.	APPROVED BY: N.D.M.
SCALE: 1:750	1716	DWG. No.