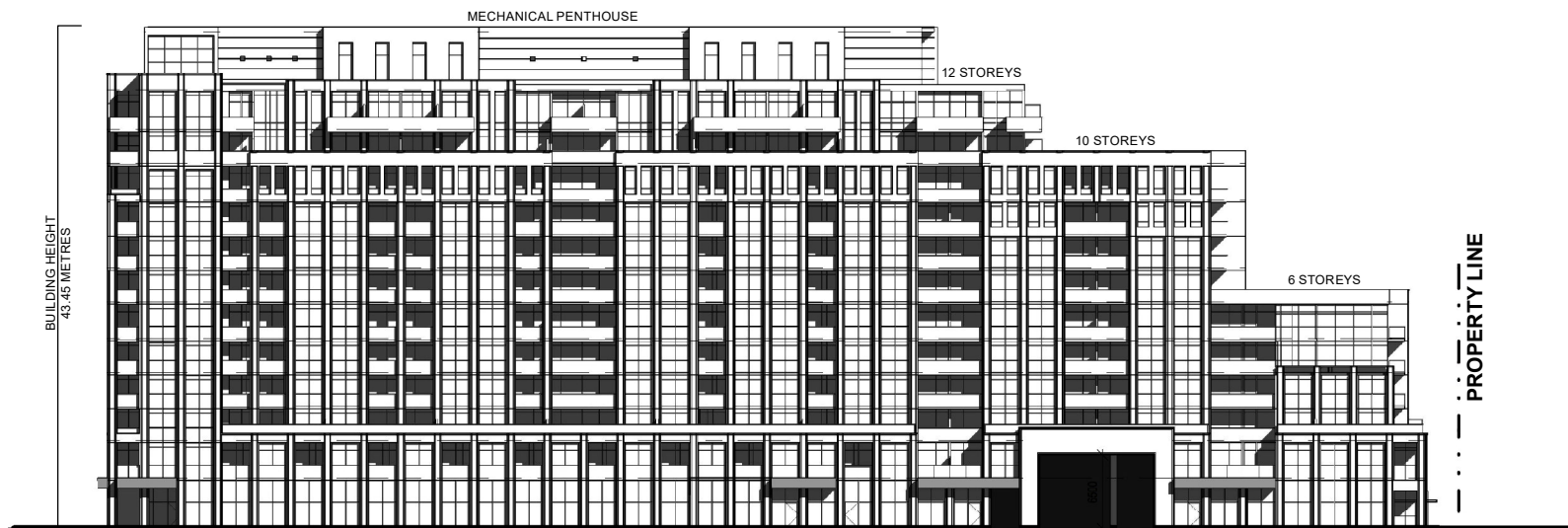


PROPOSED
12-STOREY
RESIDENTIAL
APARTMENT

SOUTH ELEVATION - FACING MAJOR MACKENZIE DRIVE WEST

PROPOSED
12-STOREY
RESIDENTIAL
APARTMENT



EAST ELEVATION - FACING FUTURE EXTENSION OF SUNSET TERRACE

Not to Scale

South and East Building Elevations

LOCATION: 3836 and 3850 Major Mackenzie Drive West

APPLICANT:
NJS Developments Inc.



Attachment

FILES:
OP.21.023, Z.21.047

RELATED FILES:
19T-17V004

DATE:
April 5, 2022

4